

GRANT COUNTY U.S. PUBLIC LAND SURVEY MONUMENT RECORD

(A) IDENTIFY THE CORNER AS REFERENCED TO THE U.S. PUBLIC LAND SURVEY SYSTEM

● = CORNER MONUMENT RESTORED

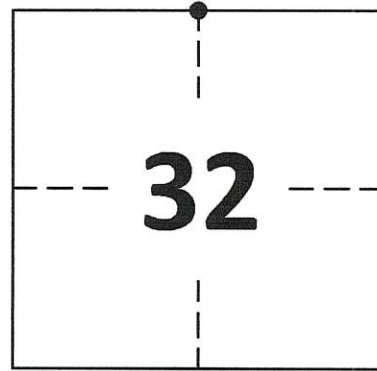
WITNESSES TO CORNER LOCATION:

COLLIN THOMPSON
JAY ANDERSON

GEOGRAPHIC COORDINATES
NAD 83 (2011) ADJUSTMENT

LATITUDE: 42°47'07.3564"
LONGITUDE: -90°52'12.0591"

WISCONSIN STATE PLANE SOUTH ZONE (US SF):
NORTHING: 287,466.329
EASTING: 1,734,949.328



SECTION 32
TOWNSHIP 4 NORTH, RANGE 4 WEST
TOWN OF BEETOWN

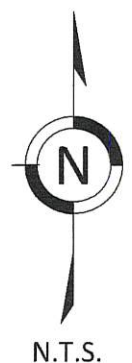
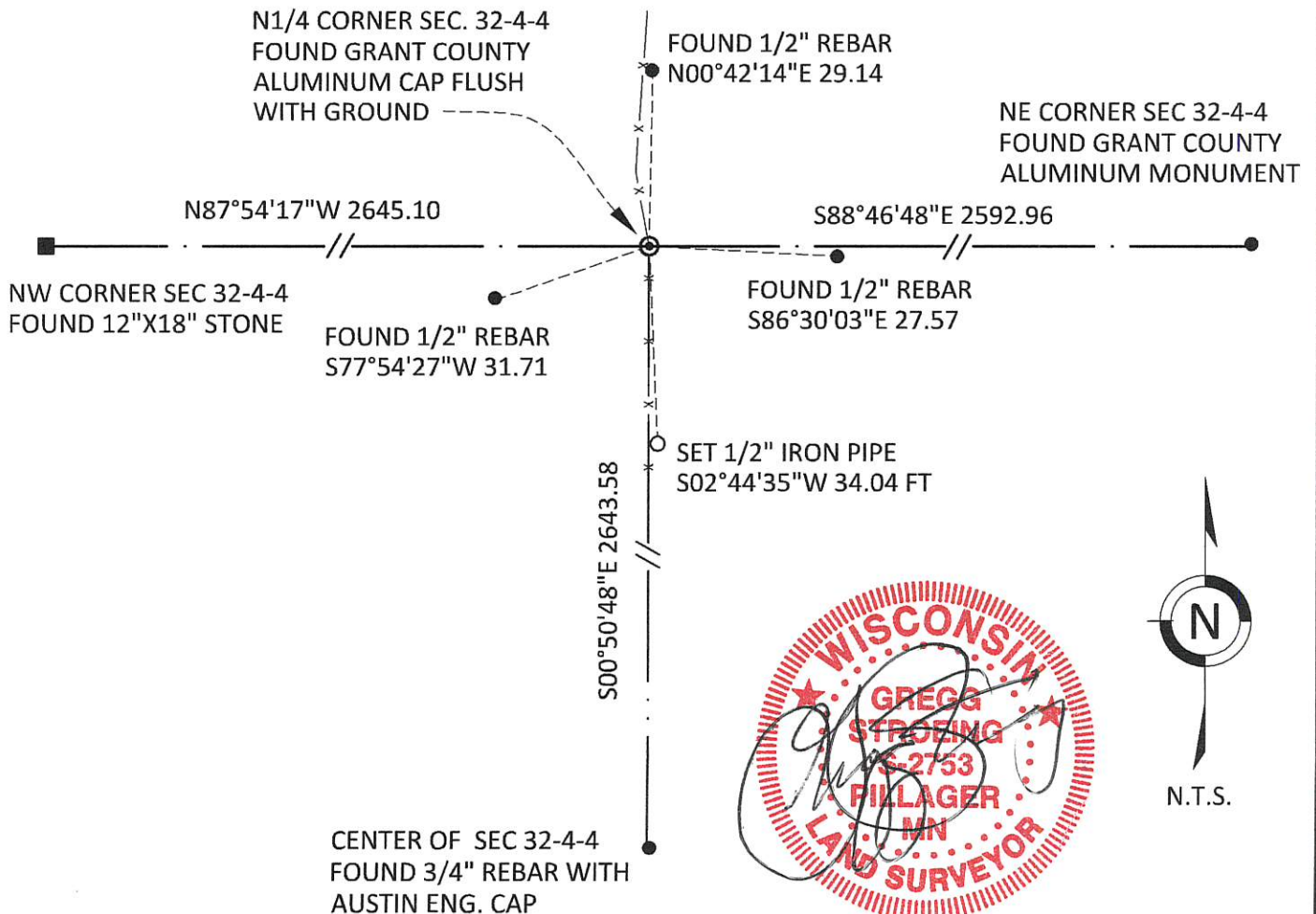
(B) DESCRIBE ANY RECORD EVIDENCE, MONUMENT EVIDENCE, OCCUPATIONAL EVIDENCE, TESTIMONIAL EVIDENCE OR ANY OTHER MATERIAL EVIDENCE YOU CONSIDERED, AND WHETHER THE MONUMENT WAS FOUND OR PLACED.

FOUND REBAR WITH GRANT COUNTY ALUMINUM CAP SET BY AARON J. AUSTIN IN 2012.

(C) IN THE PLAN VIEW DRAWING BELOW, PROVIDE REFERENCE TIES TO AT LEAST 4 WITNESS MONUMENTS. WITNESS MONUMENTS SHALL BE MADE OF CONCRETE, NATURAL STONE, IRON, BEARING TREES OR ANY OTHER EQUALLY DURABLE MATERIAL. DEPICT THE RELEVANT MONUMENTS AND REFERENCE TIES WITH SUFFICIENT DETAIL TO ENABLE ACCURATE RELOCATION OF THE CORNER IF THE CORNER MONUMENT IS DISTURBED.

(D) LEGEND

— x — x — x — x — BARBED WIRE FENCE



GRANT COUNTY
U.S. PUBLIC LAND SURVEY MONUMENT RECORD

(E) DESCRIBE ANY MATERIAL DISCREPANCY BETWEEN THE LOCATION OF THE CORNER AS RESTORED OR REESTABLISHED AND THE LOCATION OF THAT CORNER AS PREVIOUSLY RESTORED OR REESTABLISHED BY DISTANCE AND DIRECTION. SHOW THE DISCREPANCY ON THE PLAN VIEW DRAWING UNDER (D), ABOVE. SHOW THE DISTANCES BETWEEN THE CORNER AS PREVIOUSLY RESTORED OR REESTABLISHED AND (1) THE CORNER AS RESTORED OR REESTABLISHED, AND (2) TO AT LEAST 2 OF THE WITNESS MONUMENTS SHOWN ON THE DRAWING IN (D) ABOVE.

N/A

(F) WAS THE CORNER RESTORED THROUGH ACCEPTANCE OF (1) AN OBLITERATED EVIDENCE LOCATION, OR (2) A FOUND PERPETUATED LOCATION?

FOUND AT PERPETUATED LOCATION

(G&H) WAS THE CORNER REESTABLISHED THROUGH LOST CORNER PROPORTIONATE METHODS? IF SO, SHOW THE METHOD, INCLUDING THE DIRECTIONS AND DISTANCES TO OTHER PUBLIC LAND SURVEY CORNERS USED AS EVIDENCE OR USED FOR PROPORTIONING IN DETERMINING THE CORNER LOCATION.

N/A

1. CORNER HISTORY: IN 1832 ROBERT CLARK SET ORIGINAL CORNER
2. IN 1844 G.R. STUNTZ REFERENCED THIS CORNER.
3. IN 1847, BOOK A, PAGE 245, STEPHEN MAHOUD FOUND THE ORIGINAL CORNER
4. IN 1848, BOOK B, PAGE 101, GEORGE STUNTZ FOUND THE ORIGINAL CORNER
5. IN 1873 GEORGE McFALL, BOOK C, PAGE 258, REFERENCED THIS CORNER
6. IN AN UNDATED SURVEY FOR SILAS BURT IN BOOK A ON PAGE 157 THE ORIGINAL POST WAS FOUND.
7. IN 1990 RICHARD MARKS RESET THIS CORNER AND RECORDED A U.S. PUBLIC LAND SURVEY MONUMENT RECORD.
8. IN 1990 RICHARD MARKS FOUND A 3/4" REBAR ON C.S.M. 297.
9. IN 2003, BOOK 13, PAGE 74, LARRY L. AUSTIN FOUND A 3/4" REBAR ON A PLAT OF SURVEY FOR JIM GIESEN
10. IN 2006, BOOK 19, PAGE 91, LARRY L. AUSTIN FOUND A 3/4" REBAR ON A PLAT OF SURVEY FOR DAVID CLAUER AND MEASURED 2643.38 FEET TO THE NW CORNER.
11. IN 2009, BOOK 23, PAGE 41, LARRY L. AUSTIN FOUND A 3/4" REBAR ON A PLAT OF SURVEY FOR JOHN RAGATZ AND MEASURED 2633.87 FEET TO THE CENTER OF SECTION 32.
12. IN 2011 AARON J. AUSTIN RESET THIS CORNER BY PLACING A 1"X24" REBAR WITH GRANT COUNTY ALUMINUM CAP AND RECORDED A U.S. PUBLIC LAND SURVEY MONUMENT RECORD.
13. IN 2015, BOOK 37, PAGE 3, AARON J. AUSTIN FOUND A 1" REBAR WITH GRANT COUNTY ALUMINUM CAP AND MEASURED 2653.38 FEET TO THE NW CORNER OF SECTION 32 AND 2633.87 FEET TO THE CENTER OF SECTION 32.
14. IN 2020 GREGG STROEING ACCEPTED THIS POSITION OF THE GRANT COUNTY ALUMINUM MONUMENT SET AND CERTIFIED BY AARON J. AUSTIN AND VERIFIED AND SET NEW TIES AS SHOWN IN PART C

(I) I, GREGG STROEING P.L.S. - 2753, CERTIFY THAT THE CORNER LOCATION SHOWN ON THIS RECORD WAS DETERMINED BY ME OR UNDER MY DIRECTION AND CONTROL AND THAT THIS U.S. PUBLIC LAND SURVEY MONUMENT RECORD IS CORRECT AND COMPLETE TO THE BEST OF MY KNOWLEDGE AND BELIEF.

SIGNATURE

11/30/2020

DATE



CORNER NO. 110

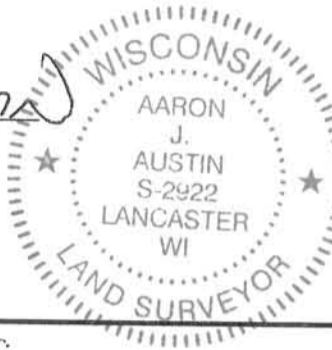
U.S. PUBLIC LAND SURVEY MONUMENT RECORD - GRANT COUNTY, WI
 Section 29, Town 4 North Range 4 West, Town of Beetown

CERTIFICATE:

I, Aaron J. Austin, do hereby certify that the corner location on this record was determined by me and/or under my direct supervision and that this U.S. Public Land Survey Monument Record is correct and complete to the best of my knowledge and belief.

Dated this 11th day of June, 2011.

Aaron J. Austin
 Aaron J. Austin, S-2922



● = CORNER LOCATION

HISTORY OF CORNER ESTABLISHMENT:

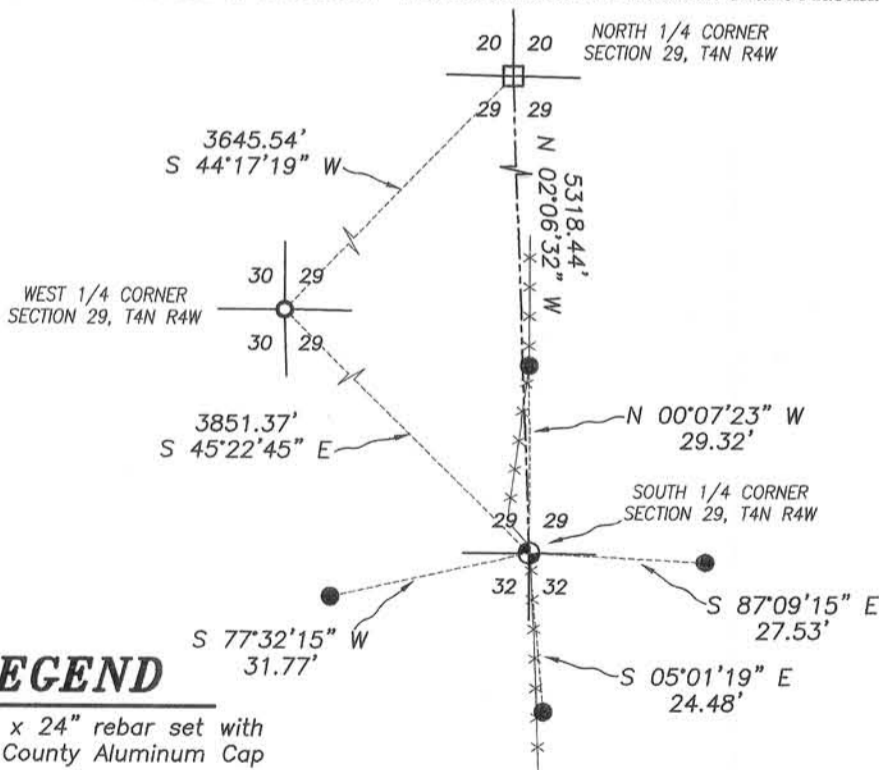
1832-Corner originally set by Robert Clark.
 Corner was tied to on a survey in Book A, Page 101.
 Corner was tied to on a Survey in Book A, Page 157.
 Corner was tied to on a survey in Book A, Page 245.
 Corner was tied to on a Survey in Book B, Page 99.
 Corner was tied to on a Survey in Book C, Page 258.
 1990 Richard Marks reset the corner and prepared a U.S. Public Land Survey Monument Record.
 1990 Richard Marks tied to the corner on C.S.M. No. 297.
 2003 Larry Austin tied to the corner on a Survey in Book 13, Page 74.
 2006 Larry Austin tied to the corner on a Survey in Book 19, Page 91
 2008 Larry Austin tied to the corner on a Survey in Book 23, Page 41.
 2009 Larry Austin tied to the corner on a Survey in Book 24, Page 78.

DESCRIPTION OF CORNER EVIDENCE FOUND:

Corner and Ties could not be recovered due to excavation and fence replacement. I reset the corner based upon measurements taken to the North 1/4 corner and West 1/4 corner of Section 29 (as shown on Certified Survey Map No. 297). I reset 4 new ties and verified this location with G.P.S. and E.D.M. methods.

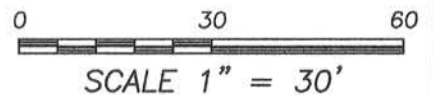
DESCRIPTION OF CORNER AND WITNESS MONUMENTS, references and accessories used to perpetuate the original or re-established location of this corner. Witnesses to corner location Shane Austin.

SKETCH:



LEGEND

- ⊕ No. 8 x 24" rebar set with Grant County Aluminum Cap
- No. 4 x 12" rebar set with cap
- ⊞ Bernsten Cast Aluminum Monument found
- No. 6 rebar found
- *- Approximate fence



SCALE 1" = 30'



4211 HWY 81 E, LANCASTER, WI 53813
 PHONE: 608-723-6363 FAX: 608-723-6702

JOB NO: 13s207
 G:\13s207
 H:\TIE\T4NR4W\110

FIELDBOOK: TDSR
 DRAWN BY: AJ AUSTIN
 CREW: SW AUSTIN

FEB 20 1990

RECEIVED

U.S. PUBLIC LAND SURVEY MONUMENT RECORD

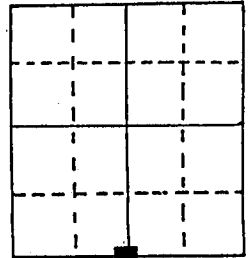
Note: This form is intended and designed to fulfill all requirements of Wisconsin Administrative Code, Chapter A-E 5.02, U.S. Public Land Survey Monument Record (3) (a) (b) (c) (d) (e) (f) (g) (h) (i). An additional sheet may be added if necessary to conform with said requirements.

(a) Corner location: Township 4 North

Range 4 East/West

Town/City/Village Beetown

County Grant

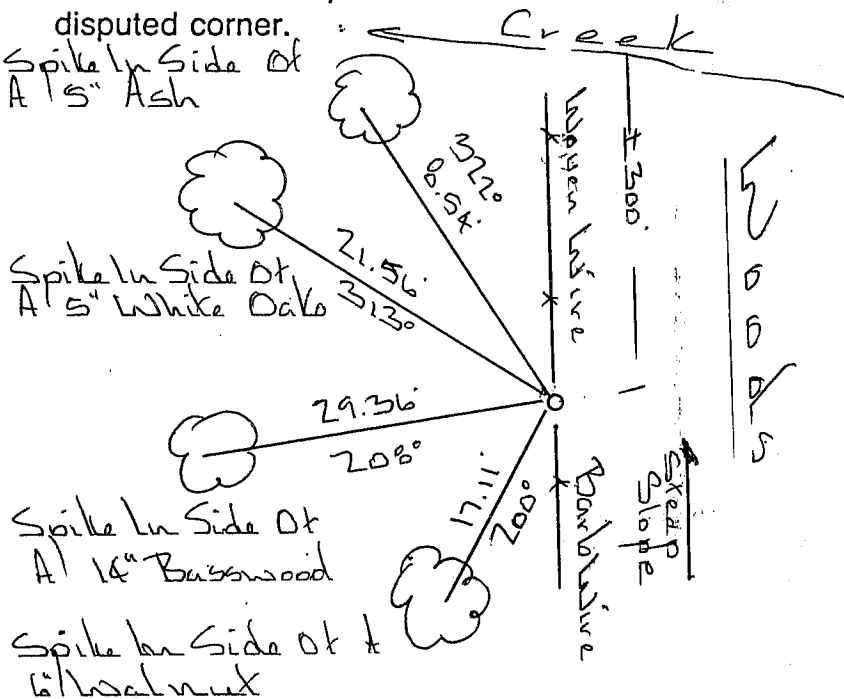


Section 29

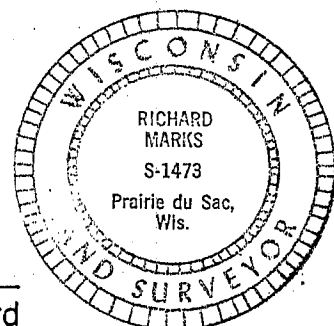
(b) (f) (g) (h) Description of monument found at this corner and if it was accepted, state all evidence (material, testimonial, occupational, plats, records, other monuments) used as a basis for accepting. If not accepted or if nothing was found, state evidence used as basis for establishing location. If reestablished through lost corner proportionate methods, indicate all monuments, distances and directions used to establish.

Set Corner At Change In Fences

(c) (d) (e) Plan view of corner with ties to at least 4 witness monuments. If in disagreement with previously established corner, show the distances between the two corners and also indicate the ties to the disputed corner.



Azimuths Are Unadjusted Magnetic
Set 3/4" x 24" Solid Round Iron Rod At Corner



Affix seal here

(i) I, Richard Marks
(type or print name) certify that the corner location on this record was determined by me or under my direction and control and that this U.S. Public Land Survey Monument Record is correct and complete to the best of my knowledge and belief.

[Signature] 2/15/1990
Signature Date