

44109

U.S. PUBLIC LAND SURVEY MONUMENT RECORD - GRANT COUNTY, WI

Section 32, Town 4 North Range 4 West, Town of Beetown (a)

NOTE: This form is intended and designed to fulfill all requirements of the Wisconsin Administrative Code Chapter A-E 7.08, U.S. Public Land Survey Monument Record (3) (a) (b) (c) (d) (e) (f) (g) (h) (i).

CERTIFICATE: (i)

I, Aaron J. Austin, Wisconsin Professional Land Surveyor, do hereby certify that the corner location on this record was determined by me and/or under my direct supervision and that this U.S. Public Land Survey Monument Record is correct and complete to the best of my knowledge and belief.

Dated this 23rd day of September, 2021.

Aaron J. Austin
Aaron J. Austin, S-2922



⊕ = CORNER LOCATION

Grant County Coordinates:
NAD 83 (2011)
Northing: 500,810.58
Easting: 778,799.27

HISTORY OF CORNER ESTABLISHMENT:

Original corner was set in 1833 by Henry Parke.
Larry Austin set a 1" Rebar with a Grant County Aluminum Cap and prepared a Survey Monument Record dated 11/12/1999.

DESCRIPTION OF CORNER EVIDENCE FOUND: (b) (f) (g) (h)

I set the a 3/4" x 18" Rebar from two witness corners. I set two additional witness corners after I verified the Monument's location with G.P.S. and E.D.M. methods.

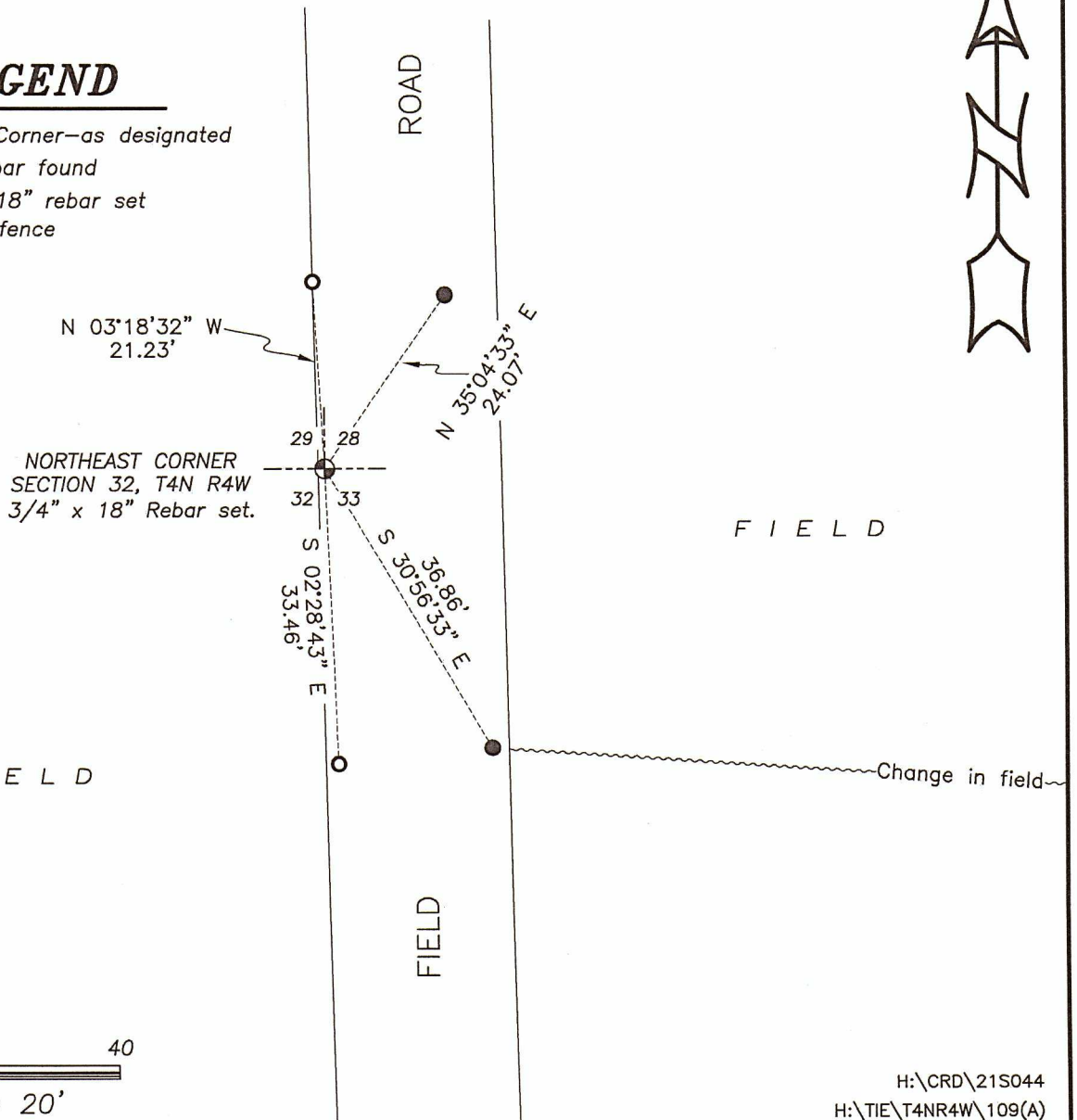
DESCRIPTION OF CORNER AND WITNESS MONUMENTS: references and accessories used to perpetuate the original or re-established location of this corner. (c) (d) (e)

Witnesses to corner location Shane Austin.
Drawn by Owen Austin

SKETCH:

LEGEND

- ⊕ Section Corner—as designated
- 1/2" rebar found
- 5/8" x 18" rebar set
- x-x-x- Existing fence



H:\CRD\21S044
H:\TIE\T4NR4W\109(A)

GRANT COUNTY CERTIFIED LAND CORNER

CORNER NUMBER 109

CERTIFICATE:

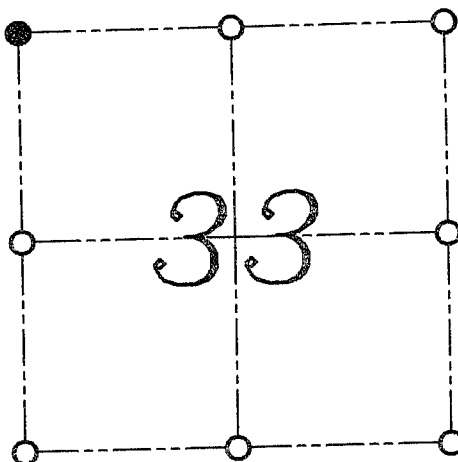
I, LARRY L. AUSTIN, DO HEREBY CERTIFY THAT ON 9th DAY OF NOVEMBER, 1999, I FOUND NO EVIDENCE OF THE NORTHWEST CORNER OF SECTION 33, TOWN 4 NORTH, RANGE 4 WEST, OF THE FOURTH PRINCIPAL MERIDIAN, AND I RE-ESTABLISHED SAID CORNER ACCORDING TO THE WISCONSIN STATUTES AS SHOWN AND DESCRIBED HEREON.

DATED THIS 12th DAY OF NOVEMBER, 1999

Larry L. Austin
LARRY L. AUSTIN S-1903



SEAL



● = CORNER LOCATION

NORTHWEST CORNER OF
SECTION 33, T 4 N R 4 W
TOWN OF BEETOWN

HISTORY OF ORIGINAL CORNER ESTABLISHMENT:

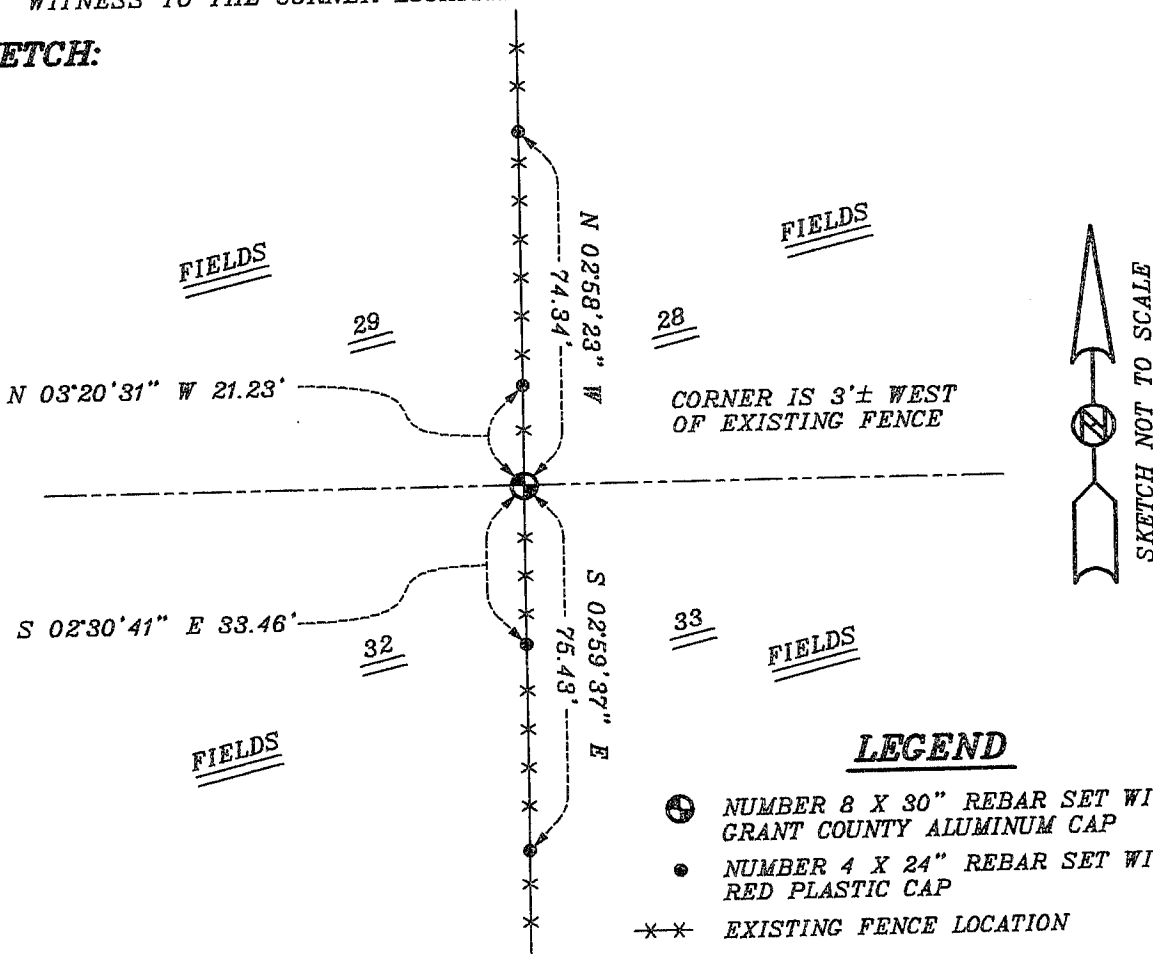
CORNER WAS SET IN 1833 BY ROBERT CLARK
IN 1898 SAMPSON RESET THE CORNER BASED ON PROPORTIONING METHODS.

DESCRIPTION OF CORNER EVIDENCE FOUND:

I SET THE CORNER BASED ON PROPORTIONING METHODS. VERIFIED THIS LOCATION USING E.D.M. AND G.P.S. METHODS.

DESCRIPTION OF CORNER AND WITNESS MONUMENTS, REFERENCES AND ACCESSORIES USED TO PERPETUATE THE ORIGINAL OR RE-ESTABLISHED LOCATION OF THIS CORNER:
WITNESS TO THE CORNER LOCATION: BOBBY SEDGWICK ; SHELBY BLINDERT

SKETCH:



LEGEND

- NUMBER 8 X 30" REBAR SET WITH GRANT COUNTY ALUMINUM CAP
- NUMBER 4 X 24" REBAR SET WITH RED PLASTIC CAP
- *-* EXISTING FENCE LOCATION