

**U.S. PUBLIC LAND SURVEY MONUMENT RECORD - GRANT COUNTY, WI**

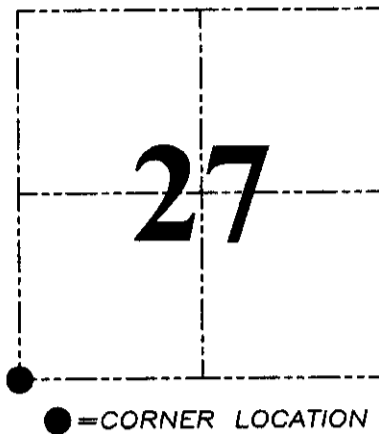
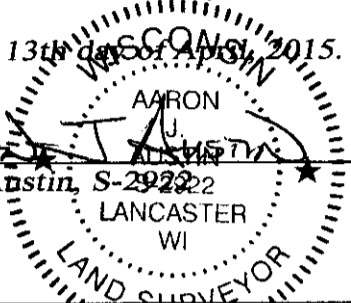
Section 27, Town 4 North Range 4 West, Town of Beetown

**CERTIFICATE:**

I, Aaron J. Austin, Wisconsin Professional Land Surveyor, do hereby certify that the corner location on this record was determined by me and/or under my direct supervision and that this U.S. Public Land Survey Monument Record is correct and complete to the best of my knowledge and belief.

Dated this 13th day of April, 2015.

*Aaron J. Austin*  
 Aaron J. Austin, S-29222



**HISTORY OF CORNER ESTABLISHMENT:**

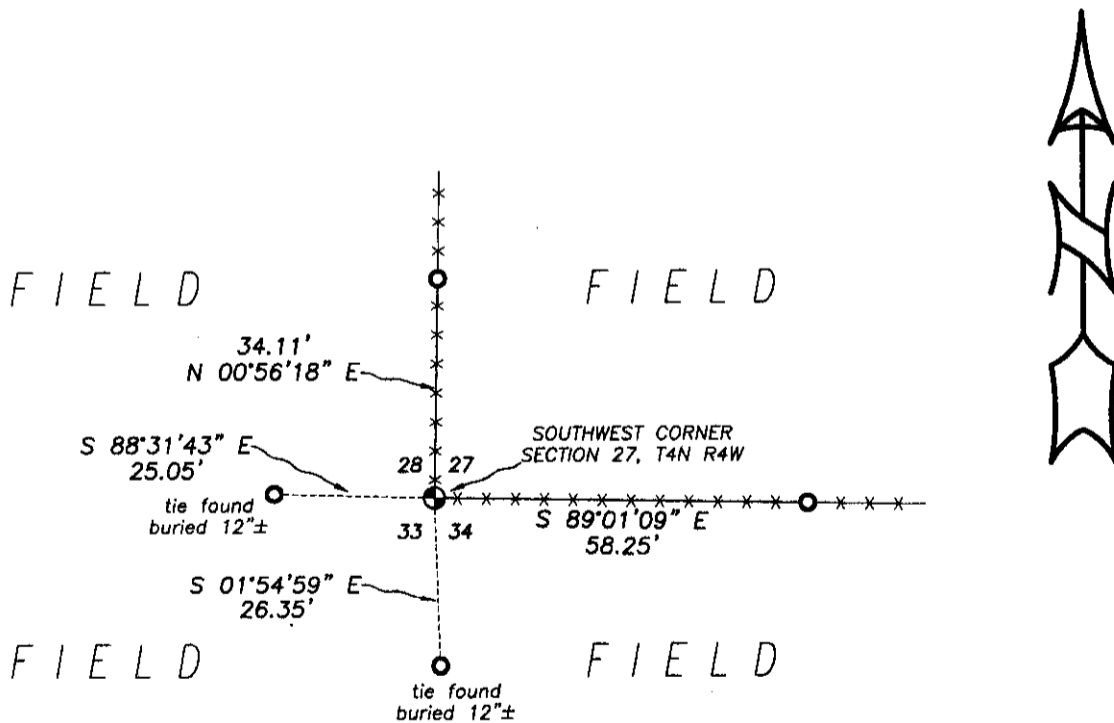
- 1833-Clark set original corner.
- 1844-Wiltse tied to the corner on a Survey filed in Book A, Page 181.
- 1877-Barber tied to the corner on a Survey filed in Book D, Page 20.
- 1898-Sampson tied to the corner on a Survey filed in Book D, Page 280.
- 2000-L. Austin reset the corner and prepared a Certified Land Corner record and set 4 witness ties.
- 2013-A.J. Austin tied to the corner on a Survey filed in Book 33, Page 72.

**DESCRIPTION OF CORNER EVIDENCE FOUND:**

A new fence corner has been placed at this location. After speaking with the adjoining land owner, the land owner noted that he put the corner post over the monument. I found all four witness corner ties set by Larry Austin in 2000 which places this corner in the corner post. I verified this location with G.P.S. and E.D.M. methods.

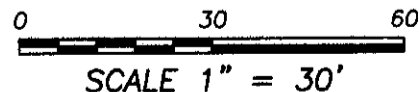
**DESCRIPTION OF CORNER AND WITNESS MONUMENTS, references and accessories used to perpetuate the original or re-established location of this corner. Witnesses to corner location Shane Austin and Kurt Snider, land owner.**

**SKETCH:**



**LEGEND**

- ⊙ Existing wood brace post—location established from existing ties
- 1/2" Rebar found with red plastic "TIE" cap
- \*— Existing fence



**Austin Engineering LLC**  
 austinengineeringllc.com

4211 HWY 81 E, LANCASTER, WI 53813  
 PHONE: 608-723-6363 FAX: 608-723-6702

JOB NO: 15S029  
 H:CRD\15s029  
 H:\TIE\T4NR4W\107

FIELDBOOK: TDSR  
 DRAWN BY: AJ AUSTIN  
 CREW: SW AUSTIN

# GRANT COUNTY CERTIFIED LAND CORNER

CORNER NUMBER 107

**CERTIFICATE:**

I, Larry L. Austin, do hereby certify that on the 5th day of October, 2000, I found evidence of the Southwest corner of Section 27, Town 4 North, Range 4 West, of the 4th Principal Meridian, and I re-established said corner according to the Wisconsin statutes as shown and described hereon.

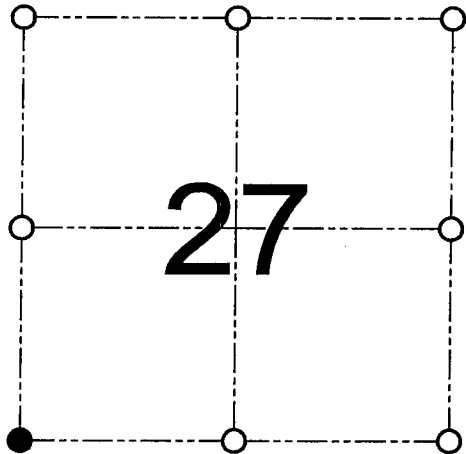
Dated this 15th day of November, 2000

*Larry L. Austin*  
Larry L. Austin S-1903

Grant County Cook.

N 500784.5

E 784120.1



● = CORNER LOCATION

SOUTHWEST CORNER OF  
SECTION 27, T 4 N R 4 W  
TOWN OF BEETOWN

**HISTORY OF ORIGINAL CORNER ESTABLISHMENT:**

Corner was originally set in 1833 by Clark.  
In 1877 Barber tied to the corner.

**DESCRIPTION OF CORNER EVIDENCE FOUND:**

I found a fence corner and accepted it's location  
after an EDM & GPS traverse of the area.

**DESCRIPTION OF CORNER AND WITNESS MONUMENTS, references and accessories used to perpetuate the original or re-established location of this corner**

WITNESS TO THE CORNER LOCATION: SHANE AUSTIN & SHELBY BLINDERT & BOBBY SEDGWICK

**SKETCH:**

