

GRANT COUNTY U.S. PUBLIC LAND SURVEY MONUMENT RECORD

(A) IDENTIFY THE CORNER AS REFERENCED TO THE U.S. PUBLIC LAND SURVEY SYSTEM

● = CORNER MONUMENT RESTORED

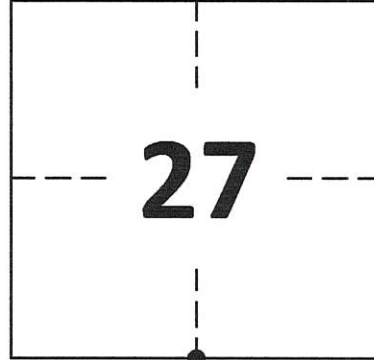
WITNESSES TO CORNER LOCATION:

JAMIE MEYER
CALEB KOLANDER

GEOGRAPHIC COORDINATES
NAD 83 (2011) ADJUSTMENT

LATITUDE: 42°47'06.8016"
LONGITUDE: -90°49'50.6037"

WISCONSIN STATE PLANE SOUTH ZONE (US SF):
NORTHING: 287,302.603
EASTING: 1,745,496.424



SECTION 27
TOWNSHIP 4 NORTH, RANGE 4 WEST
TOWN OF BEETOWN

(B) DESCRIBE ANY RECORD EVIDENCE, MONUMENT EVIDENCE, OCCUPATIONAL EVIDENCE, TESTIMONIAL EVIDENCE OR ANY OTHER MATERIAL EVIDENCE YOU CONSIDERED, AND WHETHER THE MONUMENT WAS FOUND OR PLACED.

FOUND 1" GRANT COUNTY ALUMINUM CAP SET BY LARRY L. AUSTIN IN 2000.

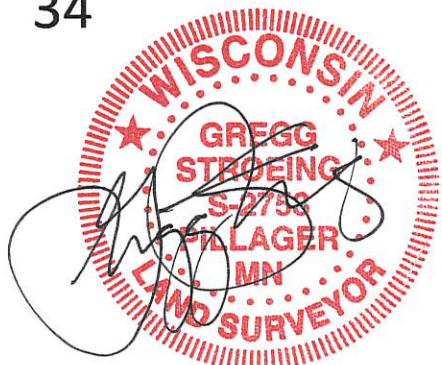
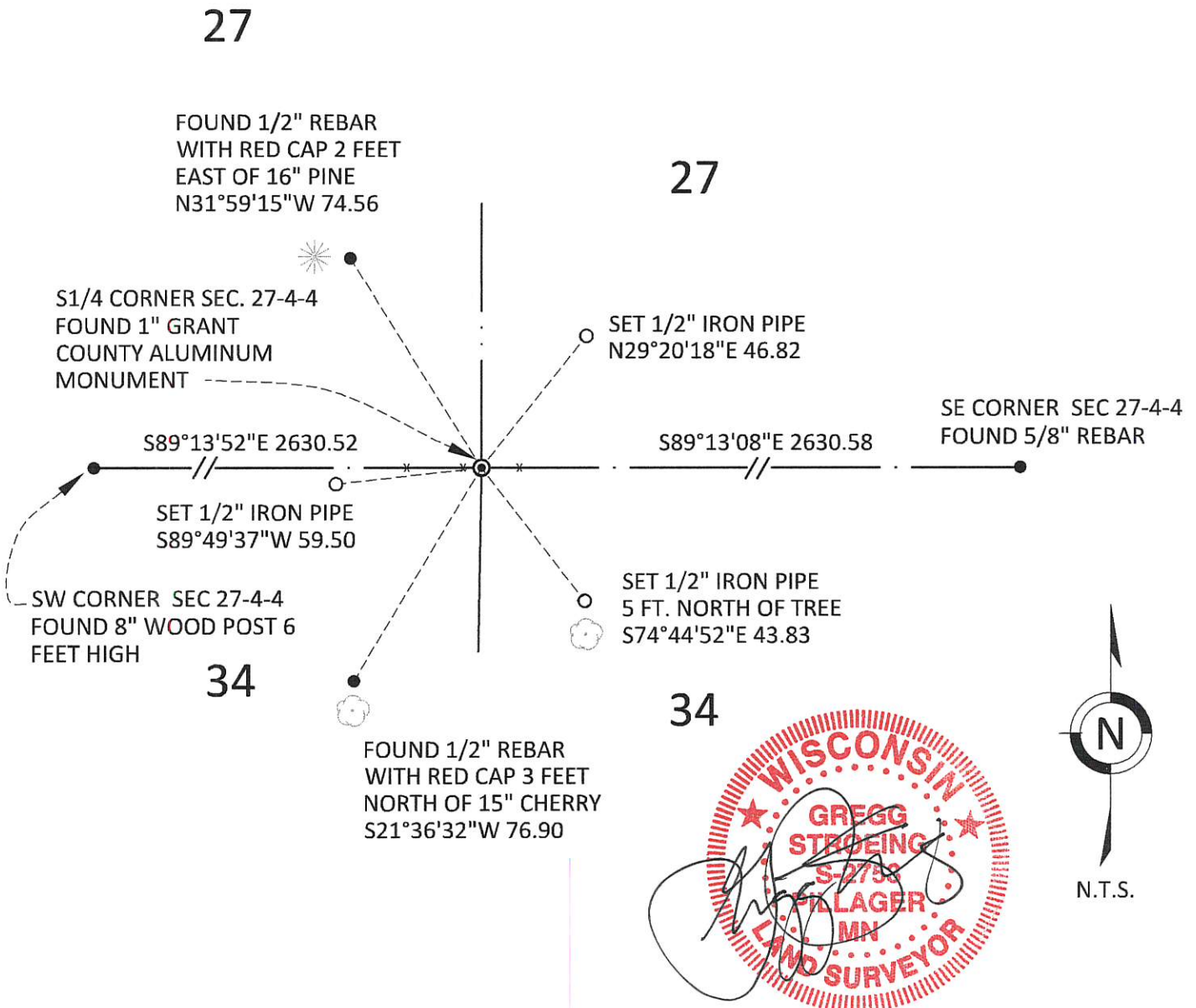
(C) IN THE PLAN VIEW DRAWING BELOW, PROVIDE REFERENCE TIES TO AT LEAST 4 WITNESS MONUMENTS. WITNESS MONUMENTS SHALL BE MADE OF CONCRETE, NATURAL STONE, IRON, BEARING TREES OR ANY OTHER EQUALLY DURABLE MATERIAL. DEPICT THE RELEVANT MONUMENTS AND REFERENCE TIES WITH SUFFICIENT DETAIL TO ENABLE ACCURATE RELOCATION OF THE CORNER IF THE CORNER MONUMENT IS DISTURBED.

(D) LEGEND



DECIDUOUS TREE

CONIFEROUS TREE



**GRANT COUNTY
U.S. PUBLIC LAND SURVEY MONUMENT RECORD**

(E) DESCRIBE ANY MATERIAL DISCREPANCY BETWEEN THE LOCATION OF THE CORNER AS RESTORED OR REESTABLISHED AND THE LOCATION OF THAT CORNER AS PREVIOUSLY RESTORED OR REESTABLISHED BY DISTANCE AND DIRECTION. SHOW THE DISCREPANCY ON THE PLAN VIEW DRAWING UNDER (D), ABOVE. SHOW THE DISTANCES BETWEEN THE CORNER AS PREVIOUSLY RESTORED OR REESTABLISHED AND (1) THE CORNER AS RESTORED OR REESTABLISHED, AND (2) TO AT LEAST 2 OF THE WITNESS MONUMENTS SHOWN ON THE DRAWING IN (D) ABOVE.

N/A

(F) WAS THE CORNER RESTORED THROUGH ACCEPTANCE OF (1) AN OBLITERATED EVIDENCE LOCATION, OR (2) A FOUND PERPETUATED LOCATION?

FOUND AT PERPETUATED LOCATION

(G&H) WAS THE CORNER REESTABLISHED THROUGH LOST CORNER PROPORTIONATE METHODS? IF SO, SHOW THE METHOD, INCLUDING THE DIRECTIONS AND DISTANCES TO OTHER PUBLIC LAND SURVEY CORNERS USED AS EVIDENCE OR USED FOR PROPORTIONING IN DETERMINING THE CORNER LOCATION.

N/A

1. CORNER HISTORY: IN 1833 ROBERT CLARK SET ORIGINAL CORNER.
2. IN 1887 (BOOK D, PAGE 22) JOEL BARBER TIED TO THIS CORNER.
3. IN 2000 LARRY L. AUSTIN SET A 1" REBAR WITH GRANT COUNTY ALUMINUM CAP AND RECORDED A GRANT COUNTYU CERTIFIED LAND CORNER.
4. IN 2000 (BOOK 7, PAGE 47) LARRY L. AUSTIN REFERENCED THIS CORNER ON A PLAT OF SURVEY.
6. IN 2009 (BOOK 24, PAGE 78) LARRY AUSTIN REFERENCED THIS CORNER ON A PLAT OF SURVEY.
7. IN 2019 (BOOK 45, PAGE 58) AARON J. AUSTIN REFERENCED THIS CORNER ON A PLAT OF SURVEY.
8. IN 2020 GREGG STROEING ACCEPTED THIS POSITION OF ALUMINUM CAP MONUMENT BY LARRY L. AUSTIN AND VERIFIED AND SET NEW TIES AS SHOWN IN PART C

(I) I, GREGG STROEING P.L.S. - 2753, CERTIFY THAT THE CORNER LOCATION SHOWN ON THIS RECORD WAS DETERMINED BY ME OR UNDER MY DIRECTION AND CONTROL AND THAT THIS U.S. PUBLIC LAND SURVEY MONUMENT RECORD IS CORRECT AND COMPLETE TO THE BEST OF MY KNOWLEDGE AND BELIEF.

SIGNATURE

12/01/2020

DATE



CORNER NO. 106

GRANT COUNTY CERTIFIED LAND CORNER

CORNER NUMBER 106

CERTIFICATE:

I, Larry L. Austin, do hereby certify that on the 5th day of October, 2000, I found no evidence of the South 1/4 corner of Section 27, Town 4 North, Range 4 West, of the 4th Principal Meridian, and I re-established said corner according to the Wisconsin statutes as shown and described hereon.

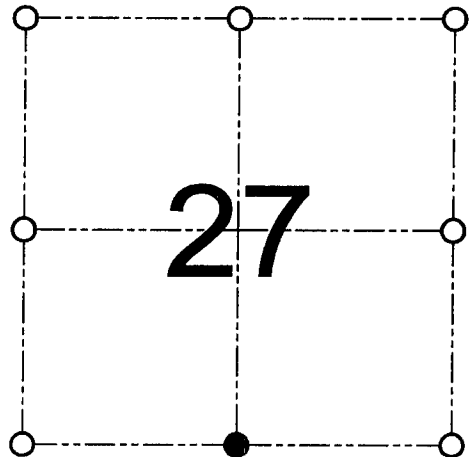
Dated this 15th day of November, 2000

Larry L. Austin
Larry L. Austin S-1903

Grant County Corr
N 500774.0
E 786750.5



SEAL



● = CORNER LOCATION

SOUTH 1/4 CORNER OF
SECTION 27, T 4 N R 4 W
TOWN OF BEETOWN

HISTORY OF ORIGINAL CORNER ESTABLISHMENT:

Corner was originally set in 1833 by Clark.
In 1877 Barber tied to the corner.

DESCRIPTION OF CORNER EVIDENCE FOUND:

I reset the corner proportionately and online with the Southwest and Southeast corners of Section 27. Verified it's location using EDM & GPS methods.

DESCRIPTION OF CORNER AND WITNESS MONUMENTS, references and accessories used to perpetuate the original or re-established location of this corner

WITNESS TO THE CORNER LOCATION: SHELBY BLINDERT & BOBBY SEDGWICK

SKETCH:

