

GRANT COUNTY U.S. PUBLIC LAND SURVEY MONUMENT RECORD

(A) IDENTIFY THE CORNER AS REFERENCED TO THE U.S. PUBLIC LAND SURVEY SYSTEM

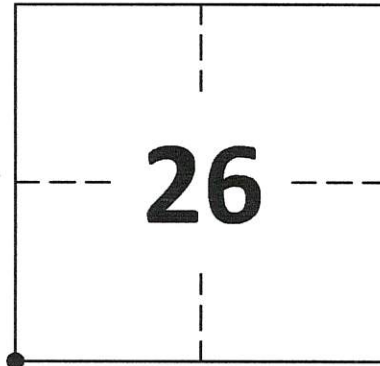
● = CORNER MONUMENT RESTORED

WITNESSES TO CORNER LOCATION:
COLLIN THOMPSON
JAY ANDERSON

GEOGRAPHIC COORDINATES
NAD 83 (2011) ADJUSTMENT

LATITUDE: 42°47'06.7048"
LONGITUDE: -90°49'15.3270"

WISCONSIN STATE PLANE SOUTH ZONE:
NORTHING: 287,266.745
EASTING: 1,748,126.764





SECTION 26
TOWNSHIP 4 NORTH, RANGE 4 WEST
TOWN OF BEETOWN

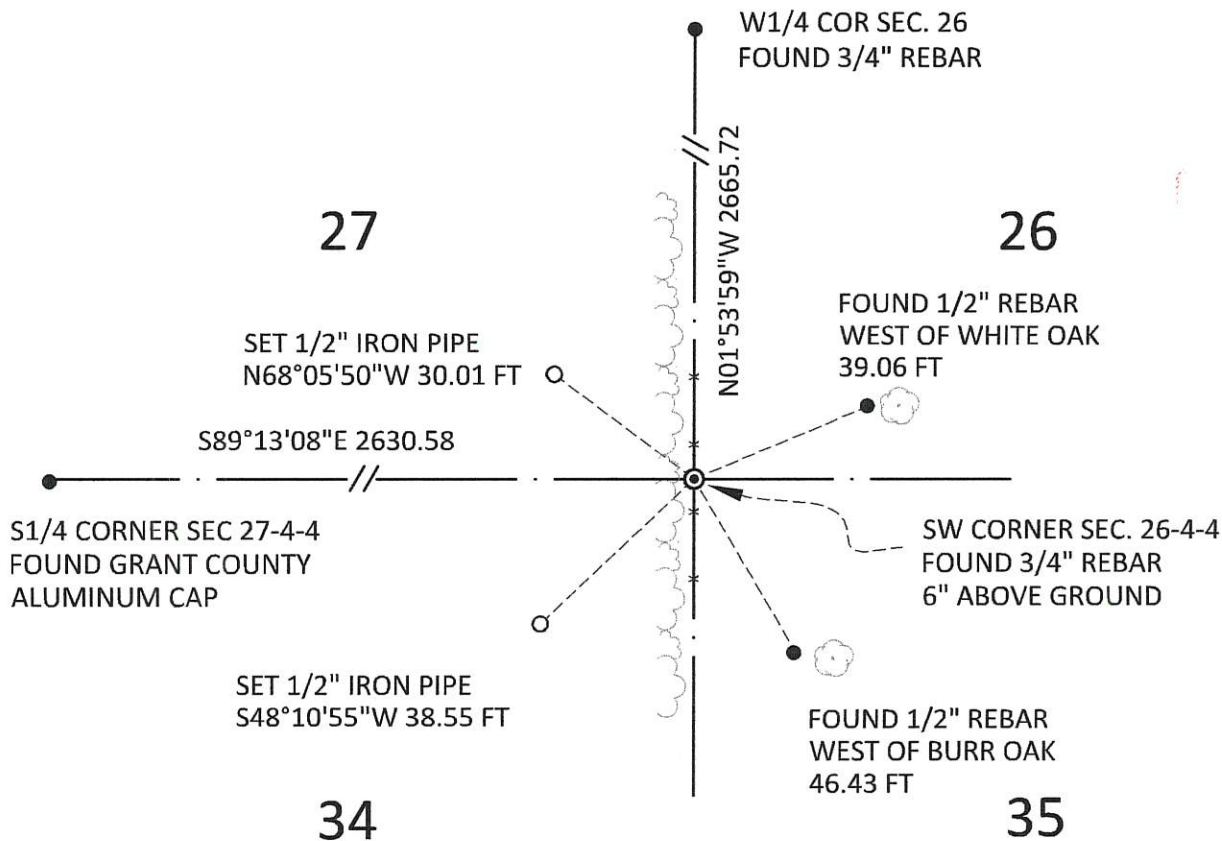
(B) DESCRIBE ANY RECORD EVIDENCE, MONUMENT EVIDENCE, OCCUPATIONAL EVIDENCE, TESTIMONIAL EVIDENCE OR ANY OTHER MATERIAL EVIDENCE YOU CONSIDERED, AND WHETHER THE MONUMENT WAS FOUND OR PLACED.

FOUND 3/4" REBAR SET BY LARRY L. AUSTIN IN 1996

(C) IN THE PLAN VIEW DRAWING BELOW, PROVIDE REFERENCE TIES TO AT LEAST 4 WITNESS MONUMENTS. WITNESS MONUMENTS SHALL BE MADE OF CONCRETE, NATURAL STONE, IRON, BEARING TREES OR ANY OTHER EQUALLY DURABLE MATERIAL. DEPICT THE RELEVANT MONUMENTS AND REFERENCE TIES WITH SUFFICIENT DETAIL TO ENABLE ACCURATE RELOCATION OF THE CORNER IF THE CORNER MONUMENT IS DISTURBED.

(D) LEGEND

- x — x — x — x — BARBED WIRE FENCE
-  DECIDUOUS TREE
-  TREE LINE



GRANT COUNTY
U.S. PUBLIC LAND SURVEY MONUMENT RECORD

(E) DESCRIBE ANY MATERIAL DISCREPANCY BETWEEN THE LOCATION OF THE CORNER AS RESTORED OR REESTABLISHED AND THE LOCATION OF THAT CORNER AS PREVIOUSLY RESTORED OR REESTABLISHED BY DISTANCE AND DIRECTION. SHOW THE DISCREPANCY ON THE PLAN VIEW DRAWING UNDER (D), ABOVE. SHOW THE DISTANCES BETWEEN THE CORNER AS PREVIOUSLY RESTORED OR REESTABLISHED AND (1) THE CORNER AS RESTORED OR REESTABLISHED, AND (2) TO AT LEAST 2 OF THE WITNESS MONUMENTS SHOWN ON THE DRAWING IN (D) ABOVE.

N/A

(F) WAS THE CORNER RESTORED THROUGH ACCEPTANCE OF (1) AN OBLITERATED EVIDENCE LOCATION, OR (2) A FOUND PERPETUATED LOCATION?

FOUND AT PERPETUATED LOCATION

(G&H) WAS THE CORNER REESTABLISHED THROUGH LOST CORNER PROPORTIONATE METHODS? IF SO, SHOW THE METHOD, INCLUDING THE DIRECTIONS AND DISTANCES TO OTHER PUBLIC LAND SURVEY CORNERS USED AS EVIDENCE OR USED FOR PROPORTIONING IN DETERMINING THE CORNER LOCATION.

N/A

1. CORNER HISTORY: IN 1833 ROBERT CLARK SET ORIGINAL CORNER
2. IN 1996, BOOK X, PAGE 63, LARRY L. AUSTIN SET THIS CORNER ON A PLAT OF SURVEY FOR BEN KAUFMAN AND RECORDED A GRANT COUNTY SURVEY MONUMENT RECORD. HE MEASURED 2622.56 FEET TO THE SOUTH 1/4 CORNER OF SECTION 26.
3. IN 2014, BOOK 35, PAGE 24, AARON J. AUSTIN REFERENCED THIS CORNER ON A PLAT OF SURVEY IN SECTION 27 FOR MARY KOTILA
4. IN 2020 GREGG STROEING ACCEPTED THIS POSITION OF THE 3/4" REBAR SET AND CERTIFIED BY LARRY AUSTIN AND VERIFIED AND SET NEW TIES AS SHOWN IN PART C

(I) I, GREGG STROEING P.L.S. - 2753, CERTIFY THAT THE CORNER LOCATION SHOWN ON THIS RECORD WAS DETERMINED BY ME OR UNDER MY DIRECTION AND CONTROL AND THAT THIS U.S. PUBLIC LAND SURVEY MONUMENT RECORD IS CORRECT AND COMPLETE TO THE BEST OF MY KNOWLEDGE AND BELIEF.

SIGNATURE

11/30/2020

DATE



CORNER NO. 105

GRANT COUNTY

Survey Monument Record

TYPE OF MONUMENT 3/4" X 24" IRON BAR SET

STATE PLANE COORDINATES: N _____
E _____

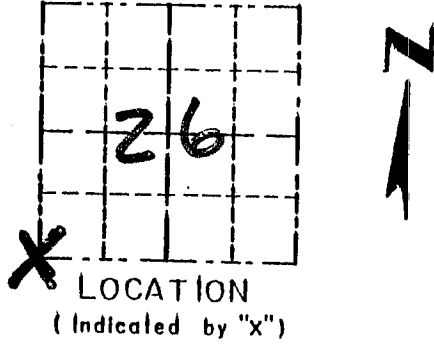
ELEVATION — M.S.L. DATUM: _____

THETA ANGLE: _____

FIELD BOOK: 96-18

PAGE _____

CORNER NO. 105
SECTION 26
TOWN 4N
RANGE 4W

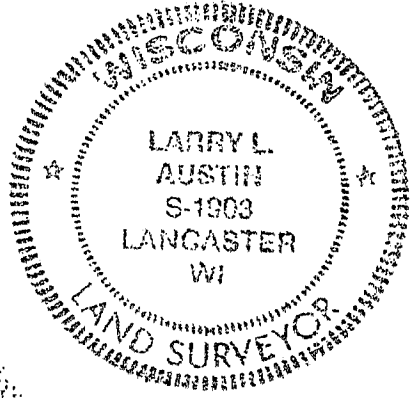


BASIS FOR MONUMENT LOCATION

(Use reverse side if necessary)

CORNER SET IN 1833 BY
ROBERT CLARK. I ACCEPTED
A NORTH / SOUTH FENCE FOR
EASTING; N-S LOCATION ESTABLISHED
BY PROJECTING A LINE FROM THE
3/4 CORNER WEST THROUGH "40" COR.
VERIFIED THIS LOCATION USING
EDM METHODS.

SEAL:



CERTIFIED CORRECT

Larry L. Austin
Registered Land Surveyor

DATE: 12-2-96

TIE SKETCH

Show at least three (3) ties and monument.

LEGEND

- ⊕ 3/4" X 24" IRON BAR SET
- 1/2" X 18" IRON BAR SET
- EXISTING FENCE

