

**GRANT COUNTY
U.S. PUBLIC LAND SURVEY MONUMENT RECORD**

(A) IDENTIFY THE CORNER AS REFERENCED TO THE U.S. PUBLIC LAND SURVEY SYSTEM

● = CORNER MONUMENT RESTORED

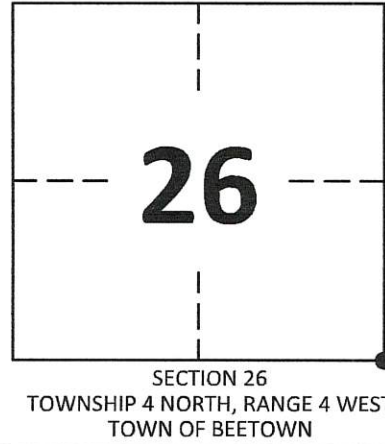
WITNESSES TO CORNER LOCATION:

COLLIN THOMPSON
JAY ANDERSON

GEOGRAPHIC COORDINATES
NAD 83 (2011) ADJUSTMENT

LATITUDE: 42°47'06.3885"
LONGITUDE: -90°48'04.9356"

WISCONSIN STATE PLANE SOUTH ZONE (US SF):
NORTHING: 287,183.673
EASTING: 1,753,375.247



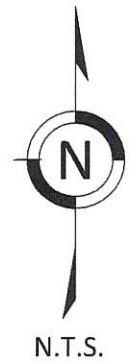
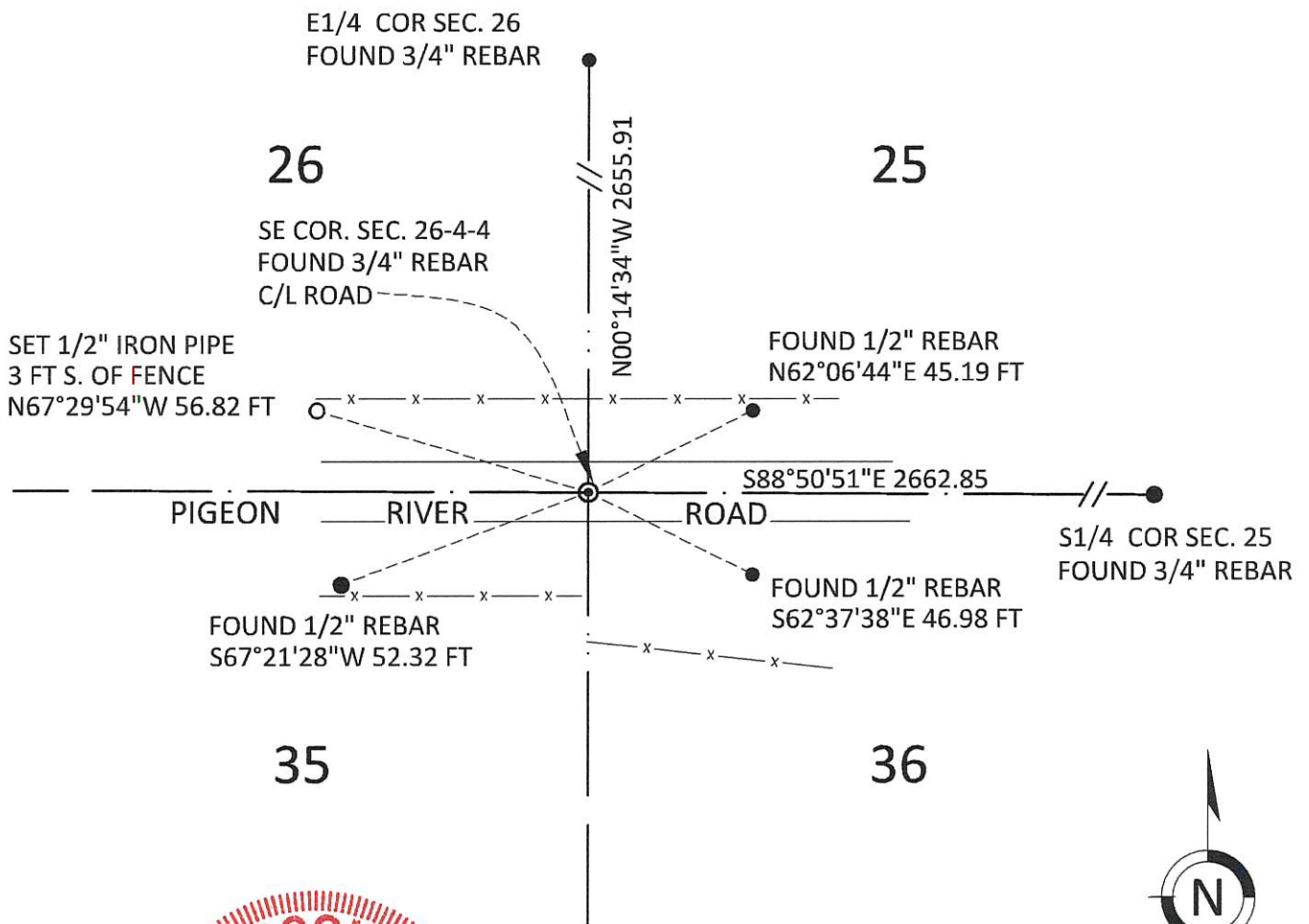
(B) DESCRIBE ANY RECORD EVIDENCE, MONUMENT EVIDENCE, OCCUPATIONAL EVIDENCE, TESTIMONIAL EVIDENCE OR ANY OTHER MATERIAL EVIDENCE YOU CONSIDERED, AND WHETHER THE MONUMENT WAS FOUND OR PLACED.

FOUND 3/4" REBAR SET BY LARRY L. AUSTIN IN 1996.

(C) IN THE PLAN VIEW DRAWING BELOW, PROVIDE REFERENCE TIES TO AT LEAST 4 WITNESS MONUMENTS. WITNESS MONUMENTS SHALL BE MADE OF CONCRETE, NATURAL STONE, IRON, BEARING TREES OR ANY OTHER EQUALLY DURABLE MATERIAL. DEPICT THE RELEVANT MONUMENTS AND REFERENCE TIES WITH SUFFICIENT DETAIL TO ENABLE ACCURATE RELOCATION OF THE CORNER IF THE CORNER MONUMENT IS DISTURBED.

(D) LEGEND

— x — x — x — x — BARBED WIRE FENCE



**GRANT COUNTY
U.S. PUBLIC LAND SURVEY MONUMENT RECORD**

(E) DESCRIBE ANY MATERIAL DISCREPANCY BETWEEN THE LOCATION OF THE CORNER AS RESTORED OR REESTABLISHED AND THE LOCATION OF THAT CORNER AS PREVIOUSLY RESTORED OR REESTABLISHED BY DISTANCE AND DIRECTION. SHOW THE DISCREPANCY ON THE PLAN VIEW DRAWING UNDER (D), ABOVE. SHOW THE DISTANCES BETWEEN THE CORNER AS PREVIOUSLY RESTORED OR REESTABLISHED AND (1) THE CORNER AS RESTORED OR REESTABLISHED, AND (2) TO AT LEAST 2 OF THE WITNESS MONUMENTS SHOWN ON THE DRAWING IN (D) ABOVE.

N/A

(F) WAS THE CORNER RESTORED THROUGH ACCEPTANCE OF (1) AN OBLITERATED EVIDENCE LOCATION, OR (2) A FOUND PERPETUATED LOCATION?

FOUND AT PERPETUATED LOCATION

(G&H) WAS THE CORNER REESTABLISHED THROUGH LOST CORNER PROPORTIONATE METHODS? IF SO, SHOW THE METHOD, INCLUDING THE DIRECTIONS AND DISTANCES TO OTHER PUBLIC LAND SURVEY CORNERS USED AS EVIDENCE OR USED FOR PROPORTIONING IN DETERMINING THE CORNER LOCATION.

N/A

1. CORNER HISTORY: IN 1833 ROBERT CLARK SET ORIGINAL CORNER
2. IN 1875, BOOK B, PAGE 537, JOEL BARBER FOUND THE ORIGINAL CORNER
3. IN 1996 LARRY L. AUSTIN SET A 3/4" REBAR AT THIS CORNER AND FILED CERTIFIED LAND CORNER .
4. IN 1996, BOOK X, PAGE 63 LARRY L. AUSTIN SHOWS THIS CORNER AS SET ON A PLAT OF SURVEY FOR BEN KAUFMAN.
5. IN 2012, BOOK 31, PAGE 25, AARON J. AUSTIN FOUND THIS CORNER ON A PLAT OF SURVEY FOR LLOYD MILLER AND MEASURED 2655.92 FEET TO THE EAST QUARTER CORNER OF SECTION 26 AND 2663.03 FEET TO THE SOUTH QUARTER CORNER OF SECTION 25.
6. IN 2020 GREGG STROEING ACCEPTED THIS POSITION OF THE 3/4" REBAR AND VERIFIED AND SET NEW TIES AS SHOWN IN PART C

(I) I, GREGG STROEING P.L.S. - 2753, CERTIFY THAT THE CORNER LOCATION SHOWN ON THIS RECORD WAS DETERMINED BY ME OR UNDER MY DIRECTION AND CONTROL AND THAT THIS U.S. PUBLIC LAND SURVEY MONUMENT RECORD IS CORRECT AND COMPLETE TO THE BEST OF MY KNOWLEDGE AND BELIEF.

SIGNATURE

11/30/2020

DATE



CORNER NO. 103

GRANT COUNTY

Survey Monument Record

TYPE OF MONUMENT 3/4" X 24" IRON BAR SET

STATE PLANE COORDINATES: N _____
E _____

ELEVATION — M.S.L. DATUM: _____

THETA ANGLE: _____

FIELD BOOK: 96-18

PAGE _____

CORNER NO. 103

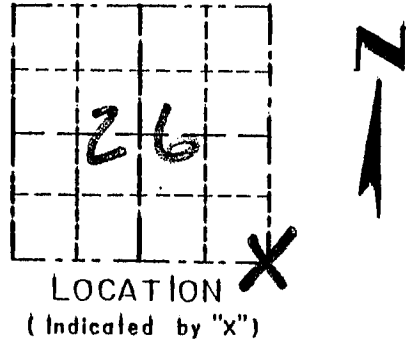
SECTION 26

TOWN 4N

RANGE 4W

BASIS FOR MONUMENT LOCATION

(Use reverse side if necessary)



LOCATION
(Indicated by "X")

SEAL:

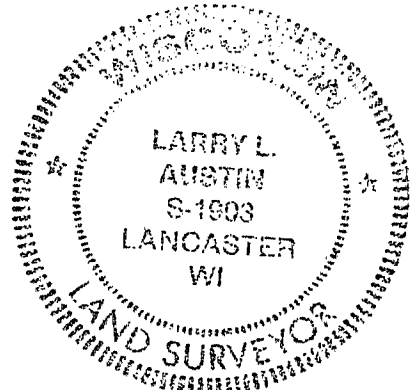
JOEL BARBER SET 30X24X7

ROCK. THE ROCK WAS UNRECOVERABLE.

I ACCEPTED THE CENTERLINE OF PIGEON RIVER ROAD FOR NORTHING.

I ACCEPTED THE EAST SIDE OF A GATE NORTH OF ROAD AND A JOG IN R.O.W. FENCE SOUTH OF ROAD FOR EASTING. THIS LOCATION

FIT VERY WELL NORTH, EAST AND WEST. VERIFIED ITS LOCATION USING EDM METHODS.



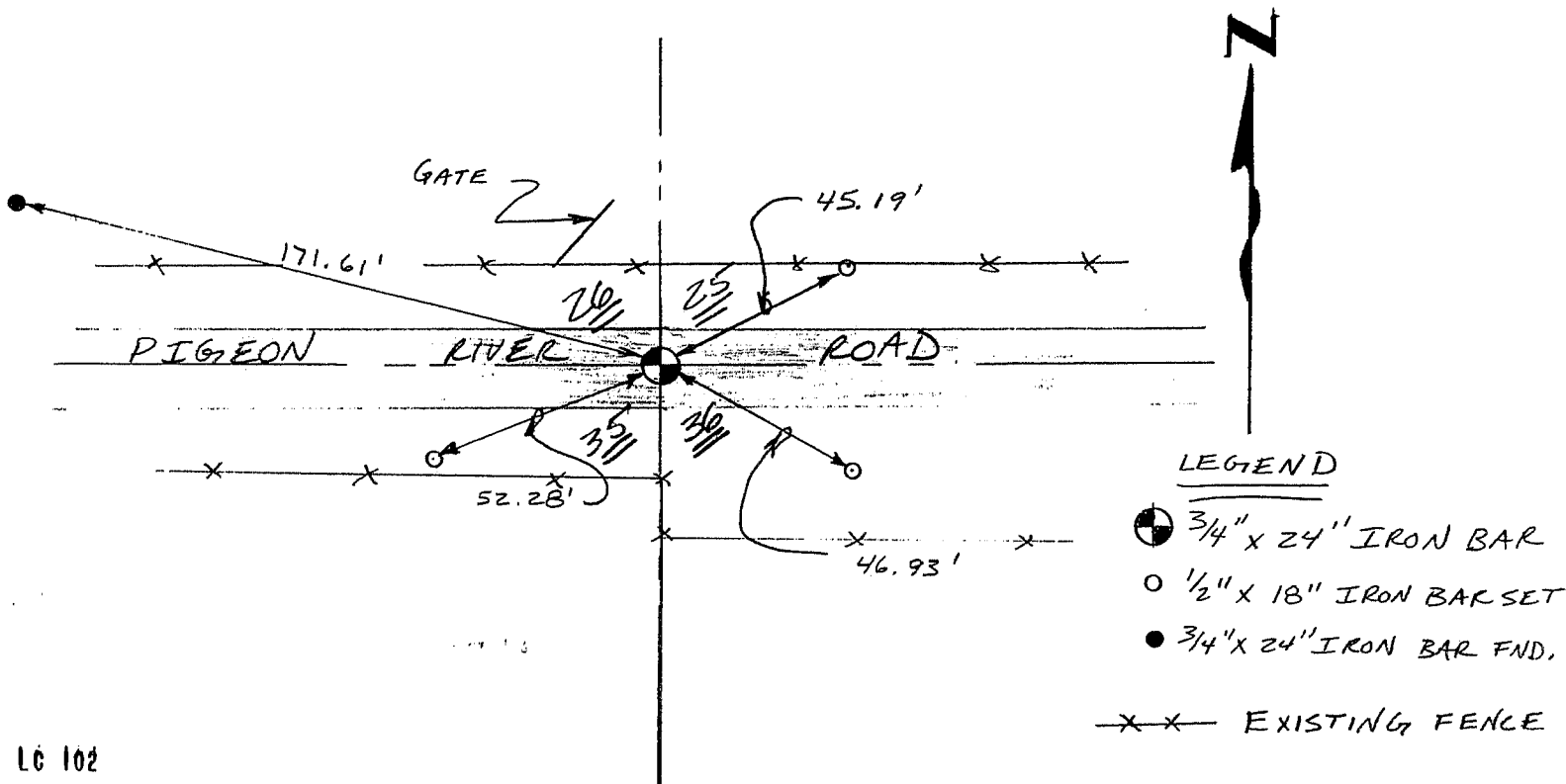
CERTIFIED CORRECT

Larry L. Austin
Registered Land Surveyor

DATE: 12-2-96

TIE SKETCH

Show at least three (3) ties and monument



LEGEND

- ⊕ 3/4" X 24" IRON BAR
- 1/2" X 18" IRON BAR SET
- 3/4" X 24" IRON BAR FND.
- X X — EXISTING FENCE