

REMON 44100

GRANT COUNTY U.S. PUBLIC LAND SURVEY MONUMENT RECORD

INSTRUCTIONS: THIS RECORD SHALL SHOW THE LOCATION OF THE CORNER AND SHALL INCLUDE ALL OF THE FOLLOWING ELEMENTS (A THROUGH I).

(A) IDENTIFY THE CORNER AS REFERENCED TO THE U.S. PUBLIC LAND SURVEY SYSTEM

■ = CORNER MONUMENT RESTORED

WITNESSES TO CORNER LOCATION:

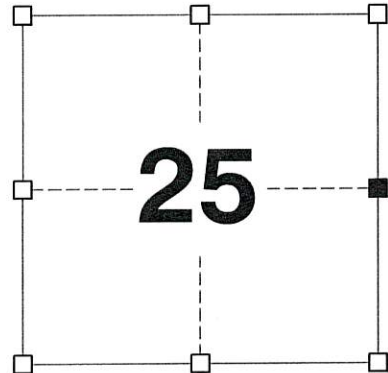
JAY P. ADAMS
PAIGE O. JELINEK

GEOGRAPHIC COORDINATES,
NAD 83 (2011) ADJUSTMENT:

LATITUDE: 42° 47' 32.04924"
LONGITUDE: 90° 46' 54.23736"

WISCONSIN COORDINATE REFERENCE SYSTEM (WISCRS),
GRANT COUNTY, NAD 83 (2011) ADJUSTMENT:

NORTHING: 503,326.86
EASTING: 799,903.54



SECTION 25
TOWNSHIP 4 NORTH, RANGE 4 WEST
TOWN OF BEETOWN

(B) DESCRIBE ANY RECORD EVIDENCE, MONUMENT EVIDENCE, OCCUPATIONAL EVIDENCE, TESTIMONIAL EVIDENCE OR ANY OTHER MATERIAL EVIDENCE YOU CONSIDERED, AND WHETHER THE MONUMENT WAS FOUND OR PLACED.

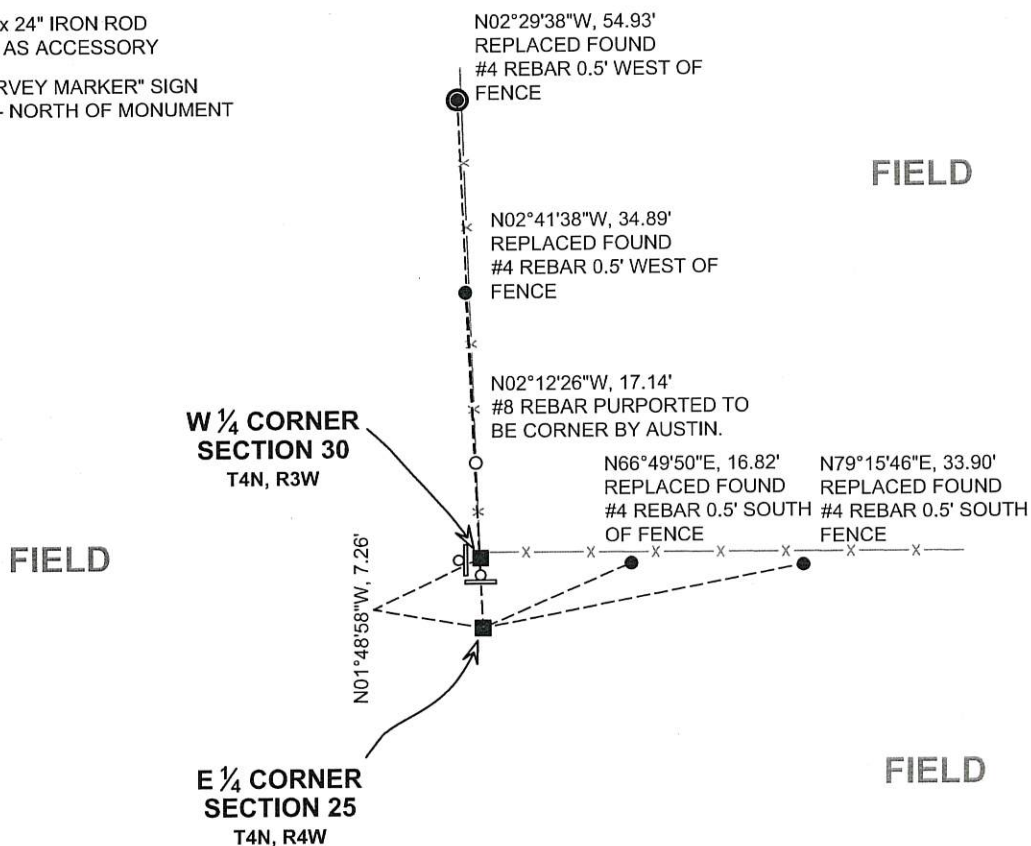
I COULD FIND NO MONUMENTS OR BEARING TREES FROM THE ORIGINAL GOVERNMENT SURVEY. I RECOVERED THE #8 REBAR SET BY AUSTIN. WHILE THIS SENIOR CORNER SHOULD CONTROL THE LOCATION OF THE WEST QUARTER CORNER OF SECTION 30, T4N, R4W, GIVEN THE STRONG OCCUPATIONAL EVIDENCE IN SECTION 30, SETTING THE SENIOR CORNER BASED ON THE LOCATION OF THE WEST QUARTER OF SECTION 30 SEEMS TO BE THE MOST VIABLE OPTION. THE "PROPORTIONED OFFSET" METHOD USED BY AUSTIN, ALTHOUGH COMMON, IS NOT THE CORRECT WAY THE WEST QUARTER CORNER OF SECTION 30 SHOULD HAVE BEEN SET. HOWEVER, IT IS LIKELY THAT THIS IS THE METHOD THAT WAS USED GIVEN THE METHODS USED HISTORICALLY BY SURVEYORS WORKING IN GRANT COUNTY. BASED ON THAT PREMISE, THE OFFSET AT THE NORTHEAST CORNER OF SECTION 25 WAS 26 LINKS SOUTH OF THE NORTHWEST CORNER OF SECTION 30 AND THE SOUTHEAST CORNER OF SECTION 25 WAS 4 LINKS NORTH OF THE SOUTHWEST CORNER OF SECTION 30... CONT'D ON BACK...

(C) IN THE PLAN VIEW DRAWING BELOW, PROVIDE REFERENCE TIES TO AT LEAST 4 WITNESS MONUMENTS. WITNESS MONUMENTS SHALL BE MADE OF CONCRETE, NATURAL STONE, IRON, BEARING TREES OR ANY OTHER EQUALLY DURABLE MATERIAL. DEPICT THE RELEVANT MONUMENTS AND REFERENCE TIES WITH SUFFICIENT DETAIL TO ENABLE ACCURATE RELOCATION OF THE CORNER IF THE CORNER MONUMENT IS DISTURBED.

(D)

LEGEND:

- SET 2" x 30" STAINLESS STEEL PIPE w/ 4" BRASS CAP
- 3/4" x 24" IRON ROD SET AS ACCESSORY
- ⊠ "SURVEY MARKER" SIGN 6' +/- NORTH OF MONUMENT



(E) DESCRIBE ANY MATERIAL DISCREPANCY BETWEEN THE LOCATION OF THE CORNER AS RESTORED OR REESTABLISHED AND THE LOCATION OF THAT CORNER AS PREVIOUSLY RESTORED OR REESTABLISHED BY DISTANCE AND DIRECTION. SHOW THE DISCREPANCY ON THE PLAN VIEW DRAWING UNDER (D), ABOVE. SHOW THE DISTANCES BETWEEN THE CORNER AS PREVIOUSLY RESTORED OR REESTABLISHED AND (1) THE CORNER AS RESTORED OR REESTABLISHED, AND (2) TO AT LEAST 2 OF THE WITNESS MONUMENTS SHOWN ON THE DRAWING IN (D) ABOVE.

CORNER WAS PREVIOUSLY RESTORED WITH A #8 x 30" REBAR AND A GRANT COUNTY ALUMINUM CAP AT AN INCORRECT OFFSET DISTANCE AND DIRECTION FROM THE WEST QUARTER CORNER OF SECTION 30, T4N, R3W. SEE DISCUSSION IN ELEMENT B).

(F) WAS THE CORNER RESTORED THROUGH ACCEPTANCE OF (1) AN OBLITERATED EVIDENCE LOCATION, OR (2) A FOUND PERPETUATED LOCATION?

(1) AN OBLITERATED EVIDENCE LOCATION.

(G&H) WAS THE CORNER REESTABLISHED THROUGH LOST CORNER PROPORTIONATE METHODS? IF SO, SHOW THE METHOD, INCLUDING THE DIRECTIONS AND DISTANCES TO OTHER PUBLIC LAND SURVEY CORNERS USED AS EVIDENCE OR USED FOR PROPORTIONING IN DETERMINING THE CORNER LOCATION.

N/A

CORNER HISTORY

THE ORIGINAL GOVERNMENT CORNER WAS ESTABLISHED BY SYLVESTER SIBLEY IN THE SECOND QUARTER OF 1832.

IN A TIE SHEET DATED 5 JUNE 2012, AARON AUSTIN SET A #8 x 30" IRON ROD WITH A GRANT COUNTY ALUMINUM CAP AT THE PROPORTIONED OFFSET FROM THE WEST QUARTER CORNER OF SECTION 30, T4N, R3W AND THE NORTHEAST CORNER OF SECTION 25, T4N, R4W.

AUSTIN HAS USED THIS CORNER IN TWO PLATS OF SURVEY.

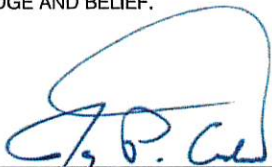
ELEMENT B) CONT'D FROM FRONT...

WHICH RESULTS IN AN OFFSET AT THE QUARTER CORNER OF 26 LINKS SOUTH MINUS 4 LINKS NORTH WHICH EQUALS 22 LINKS SOUTH, THEN DIVIDED BY 2 FOR PROPORTIONING EQUALS 11 LINKS OR 7.26 FEET SOUTH OF THE WEST QUARTER CORNER OF SECTION 30. INSTEAD, AUSTIN SET THIS CORNER 9.90 FEET NORTH OF THE WEST QUARTER CORNER OF SECTION 30. I PRESUME HE ADDED 26 LINKS AND 4 LINKS TOGETHER INSTEAD OF SUBTRACTING THEM WHICH WOULD RESULT IN AN OFFSET OF 30 LINKS, THEN DIVIDED BY TWO FOR PROPORTIONING EQUALS 15 LINKS OR 9.90 FEET. THE INCORRECT DISTANCE WAS THEN USED IN THE WRONG DIRECTION OF THE WEST QUARTER CORNER OF SECTION 30 RESULTING IN THE RECOVERY OF THE CORNERS WHERE THEY ARE TODAY.

I DID NOT ACCEPT AUSTIN'S LOCATION, RATHER I REMONUMENTED THE CORNER 7.26 FEET SOUTH OF THE WEST QUARTER CORNER OF SECTION 30 FOR THE REASONS STATED ABOVE. I SET A 2" x 30" STAINLESS STEEL PIPE WITH A 4" GRANT COUNTY BRASS CAP AT THIS LOCATION.

AFFIX LAND SURVEYOR SEAL

(I) I, JAY P. ADAMS, P.L.S. - 2879, CERTIFY THAT THE CORNER LOCATION SHOWN ON THIS RECORD WAS DETERMINED BY ME OR UNDER MY DIRECTION AND CONTROL AND THAT THIS U.S. PUBLIC LAND SURVEY MONUMENT RECORD IS CORRECT AND COMPLETE TO THE BEST OF MY KNOWLEDGE AND BELIEF.



26 MAY 2018

SIGNATURE

DATE



U.S. PUBLIC LAND SURVEY MONUMENT RECORD - GRANT COUNTY, WI

Section 25, Town 4 North Range 4 West, Town of Beetown

CERTIFICATE:

I, Aaron J. Austin, do hereby certify that the corner location on this record was determined by me and/or under my direct supervision and that this U.S. Public Land Survey Monument Record is correct and complete to the best of my knowledge and belief.

Dated this 5th day of June, 2012.

Aaron J. Austin
 Aaron J. Austin, S-2922
 LAND SURVEYOR
 LANCASTER WI



● = CORNER LOCATION

HISTORY OF CORNER ESTABLISHMENT:

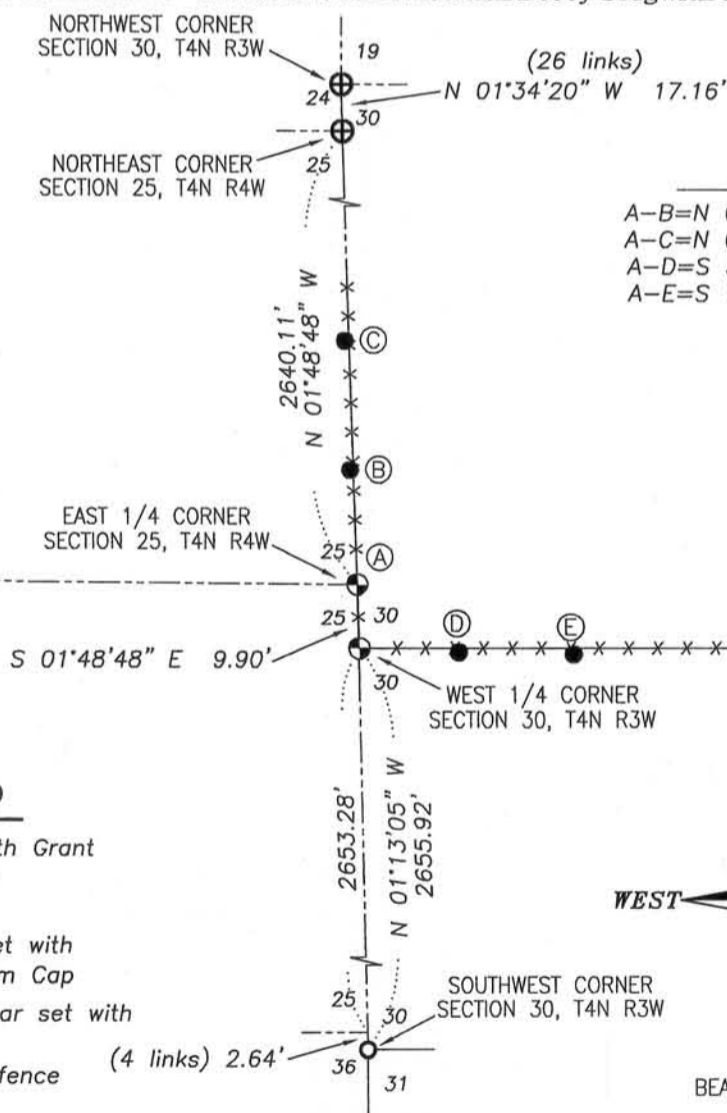
Corner was originally set in 1832 by Sibley. This corner was also shown on a survey by Wiltse in 1844, filed in Book A, Page 239, Grant County Surveys, Grant County Tax Lister's Office. No other record was found for this corner.

DESCRIPTION OF CORNER EVIDENCE FOUND:

No evidence of the corner was found. I reset the corner at the prorated offest between the West 1/4 corner of Section 30, T4N R3W and the Northeast corner of Section 25. I verified this location by E.D.M. and G.P.S. methods.

DESCRIPTION OF CORNER AND WITNESS MONUMENTS, references and accessories used to perpetuate the original or re-established location of this corner. Witnesses to corner location Bobby Sedgwick & Shelby Blindert

SKETCH:

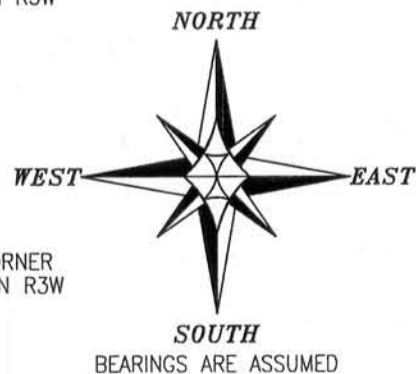


TABULATION

A-B=N	03°20'28" W	17.72'
A-C=N	02°46'38" W	37.80'
A-D=S	56°38'14" E	19.10'
A-E=S	72°16'58" E	35.54'

LEGEND

- ⊕ No. 8 rebar found with Grant County Aluminum Cap
- No. 6 rebar found
- ⊗ No. 8 x 30" rebar set with Grant County Aluminum Cap
- Number 4 x 24" Rebar set with red plastic "TIE" cap
- x-x- Approximate existing fence



SKETCH NOT TO SCALE



Austin Engineering LLC
 austinengineeringllc.com
 4211 HWY 81 E, LANCASTER, WI 53813
 PHONE: 608-723-6363 FAX: 608-723-6702

JOB NO: 12s069
 G:\T4NR4W\22
 H:\TIE\T4NR4W\100

FIELDBOOK: TDSR
 DRAWN BY: AJ AUSTIN
 CREW: BS-SB