

GRANT COUNTY U.S. PUBLIC LAND SURVEY MONUMENT RECORD

(A) IDENTIFY THE CORNER AS REFERENCED TO THE U.S. PUBLIC LAND SURVEY SYSTEM

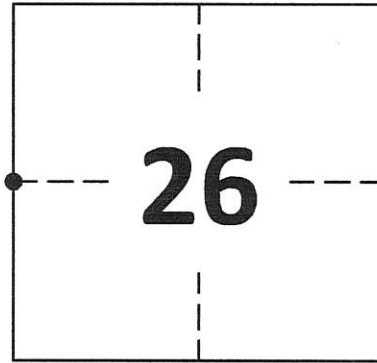
● = CORNER MONUMENT RESTORED

WITNESSES TO CORNER LOCATION:
COLLIN THOMPSON
JAY ANDERSON

GEOGRAPHIC COORDINATES
NAD 83 (2011) ADJUSTMENT

LATITUDE: 42°47'33.0115"
LONGITUDE: -90°49'16.8639"

WISCONSIN STATE PLANE SOUTH ZONE (US SF):
NORTHING: 289,931.002
EASTING: 1,748,038.395



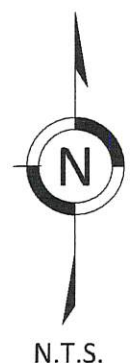
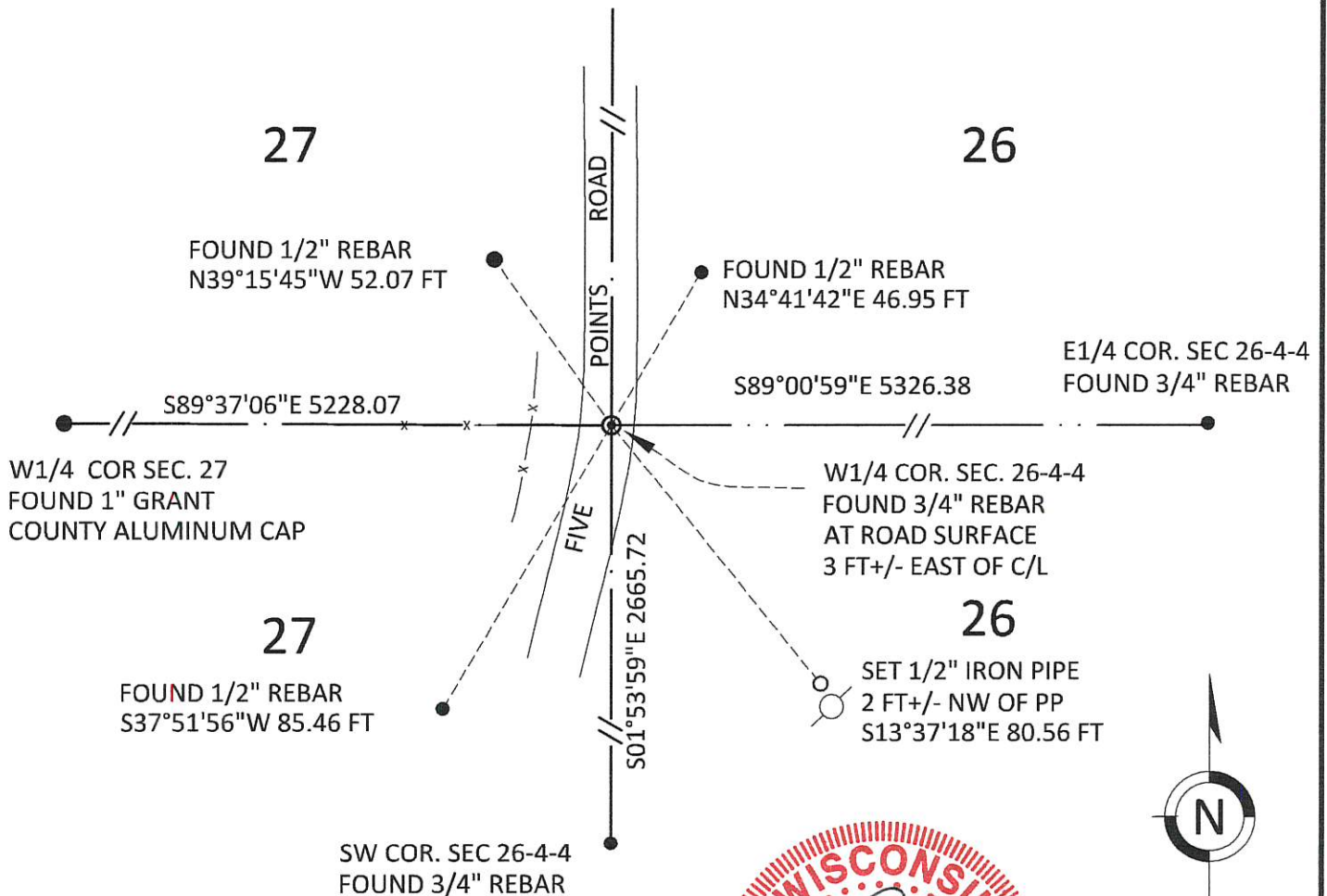
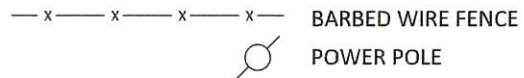
SECTION 26
TOWNSHIP 4 NORTH, RANGE 4 WEST
TOWN OF BEETOWN

(B) DESCRIBE ANY RECORD EVIDENCE, MONUMENT EVIDENCE, OCCUPATIONAL EVIDENCE, TESTIMONIAL EVIDENCE OR ANY OTHER MATERIAL EVIDENCE YOU CONSIDERED, AND WHETHER THE MONUMENT WAS FOUND OR PLACED.

FOUND 3/4" REBAR SET BY LARRY L. AUSTIN IN 1996.

(C) IN THE PLAN VIEW DRAWING BELOW, PROVIDE REFERENCE TIES TO AT LEAST 4 WITNESS MONUMENTS. WITNESS MONUMENTS SHALL BE MADE OF CONCRETE, NATURAL STONE, IRON, BEARING TREES OR ANY OTHER EQUALLY DURABLE MATERIAL. DEPICT THE RELEVANT MONUMENTS AND REFERENCE TIES WITH SUFFICIENT DETAIL TO ENABLE ACCURATE RELOCATION OF THE CORNER IF THE CORNER MONUMENT IS DISTURBED.

(D) LEGEND



**GRANT COUNTY
U.S. PUBLIC LAND SURVEY MONUMENT RECORD**

(E) DESCRIBE ANY MATERIAL DISCREPANCY BETWEEN THE LOCATION OF THE CORNER AS RESTORED OR REESTABLISHED AND THE LOCATION OF THAT CORNER AS PREVIOUSLY RESTORED OR REESTABLISHED BY DISTANCE AND DIRECTION. SHOW THE DISCREPANCY ON THE PLAN VIEW DRAWING UNDER (D), ABOVE. SHOW THE DISTANCES BETWEEN THE CORNER AS PREVIOUSLY RESTORED OR REESTABLISHED AND (1) THE CORNER AS RESTORED OR REESTABLISHED, AND (2) TO AT LEAST 2 OF THE WITNESS MONUMENTS SHOWN ON THE DRAWING IN (D) ABOVE.

N/A

(F) WAS THE CORNER RESTORED THROUGH ACCEPTANCE OF (1) AN OBLITERATED EVIDENCE LOCATION, OR (2) A FOUND PERPETUATED LOCATION?

FOUND AT PERPETUATED LOCATION

(G&H) WAS THE CORNER REESTABLISHED THROUGH LOST CORNER PROPORTIONATE METHODS? IF SO, SHOW THE METHOD, INCLUDING THE DIRECTIONS AND DISTANCES TO OTHER PUBLIC LAND SURVEY CORNERS USED AS EVIDENCE OR USED FOR PROPORTIONING IN DETERMINING THE CORNER LOCATION.

N/A

1. CORNER HISTORY: IN 1833 ROBERT CLARK SET ORIGINAL CORNER
2. IN 1875, BOOK B, PAGE 537, JOEL BARBER FOUND THE ORIGINAL CORNER
3. IN 1996, BOOK X, PAGE 63, LARRY L. AUSTIN SET A 3/4" REBAR AT THIS CORNER AND FILED CERTIFIED LAND CORNER.
4. IN 2000, BOOK 8, PAGE 537, LARRY AUSTIN REFERENCED THIS CORNER ON A PLAT OF SURVEY.
5. IN 2009, BOOK 25, PAGE 56, AARON J. AUSTIN REFERENCED THIS CORNER OF A PLAT OF SURVEY.
6. IN 2012, BOOK 31, PAGE 25, AARON J. AUSTIN FOUND THIS CORNER ON A PLAT OF SURVEY FOR LLOYD MILLER AND MEASURED 2673.02 FEET TO THE CENTER OF SECTION AND 2655.92 FEET TO THE SE CORNER OF SECTION 26 .
7. IN 2015, BOOK 36, PAGE 63, AARON J. AUSTIN FOUND THIS CORNER ON A PLAT OF SURVEY FOR KATHY PENNEKAMP AND MEASURED 2672.98 FEET TO THE CENTER OF SECTION.
8. IN 2020 GREGG STROEING ACCEPTED THIS POSITION OF THE 3/4" REBAR AND VERIFIED AND SET NEW TIES AS SHOWN IN PART C

(I) I, GREGG STROEING P.L.S. - 2753, CERTIFY THAT THE CORNER LOCATION SHOWN ON THIS RECORD WAS DETERMINED BY ME OR UNDER MY DIRECTION AND CONTROL AND THAT THIS U.S. PUBLIC LAND SURVEY MONUMENT RECORD IS CORRECT AND COMPLETE TO THE BEST OF MY KNOWLEDGE AND BELIEF.

SIGNATURE

11/30/2020

DATE



CORNER NO. 98

GRANT COUNTY

Survey Monument Record

TYPE OF MONUMENT 3/4" X 24" IRON BAR SET

STATE PLANE COORDINATES: N _____
E _____

ELEVATION — M.S.L. DATUM: _____

THETA ANGLE: _____

FIELD BOOK: 96-18

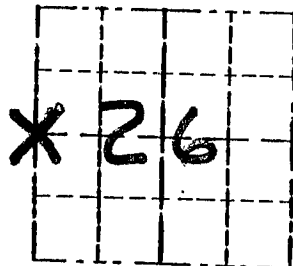
PAGE _____

CORNER NO. 98

SECTION 26

TOWN 4N

RANGE 4W

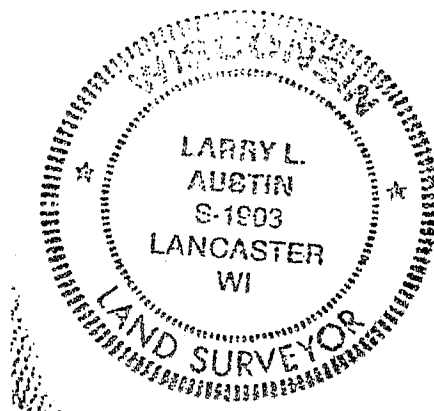


LOCATION
(Indicated by "X")

BASIS FOR MONUMENT LOCATION

(Use reverse side if necessary)

CORNER SET IN 1833 BY
ROBERT CLARK, IN 1875 JOEL
BARBER FOUND THE ORIGINAL SEAL:
CORNER. HOMER D. RALPH JR
WENT TO THE CORNER IN 1969
NO MONUMENT WAS PLACED, I
ACCEPTED A FENCE WEST FOR
NORTHING AND A PROJECTION OF
CENTERLINE FROM THE NORTH FOR
EASTING, VERIFIED ITS LOCATION
USING EDM METHODS.



CERTIFIED CORRECT

Larry L. Austin
Registered Land Surveyor

DATE: 12-2-96

TIE SKETCH

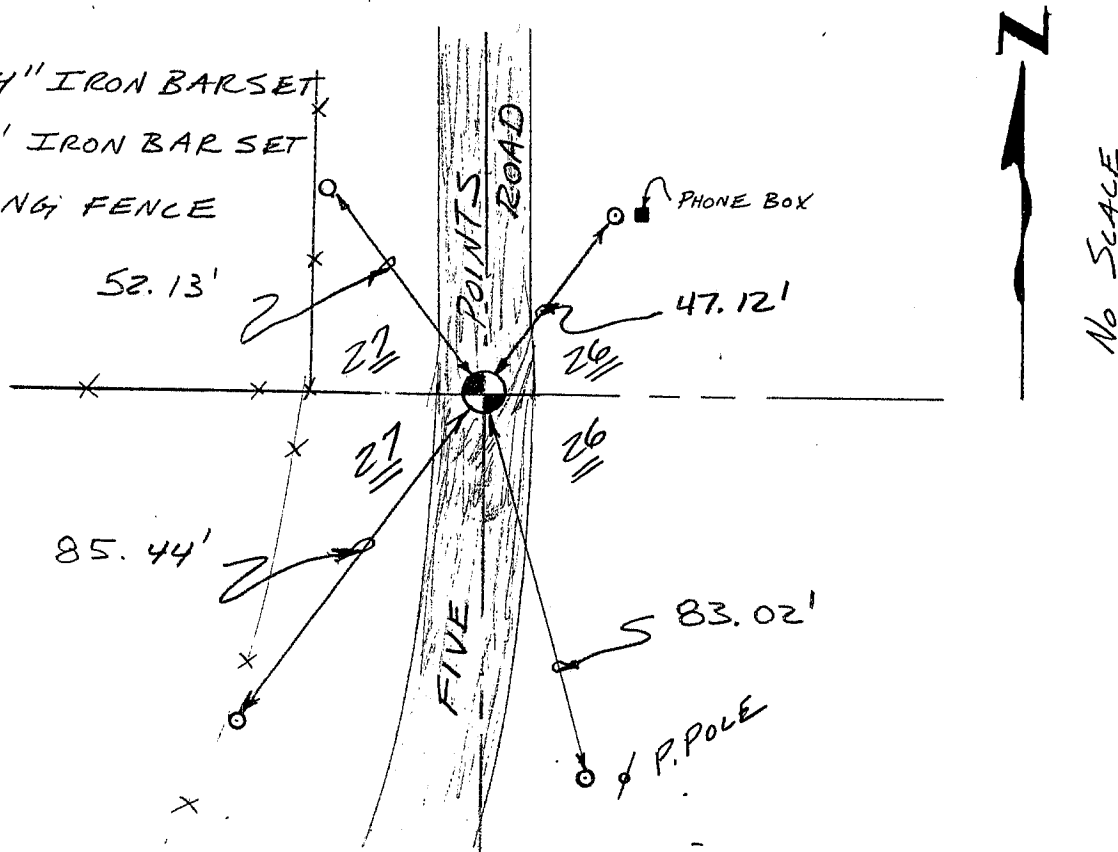
Show at least three (3) ties and monument

LEGEND

⊙ 3/4" X 24" IRON BAR SET

○ 1/2" X 18" IRON BAR SET

--- EXISTING FENCE



No SCALE