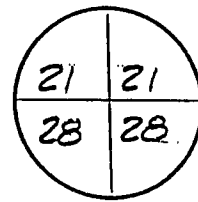


U.S. PUBLIC LAND SURVEY MONUMENT RECORD

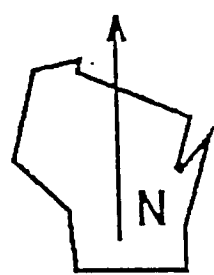
DT1291 96 (Replaces ED716)

T. 4 N.-R. 4 W
 4th Principal Meridian
 Corner _____

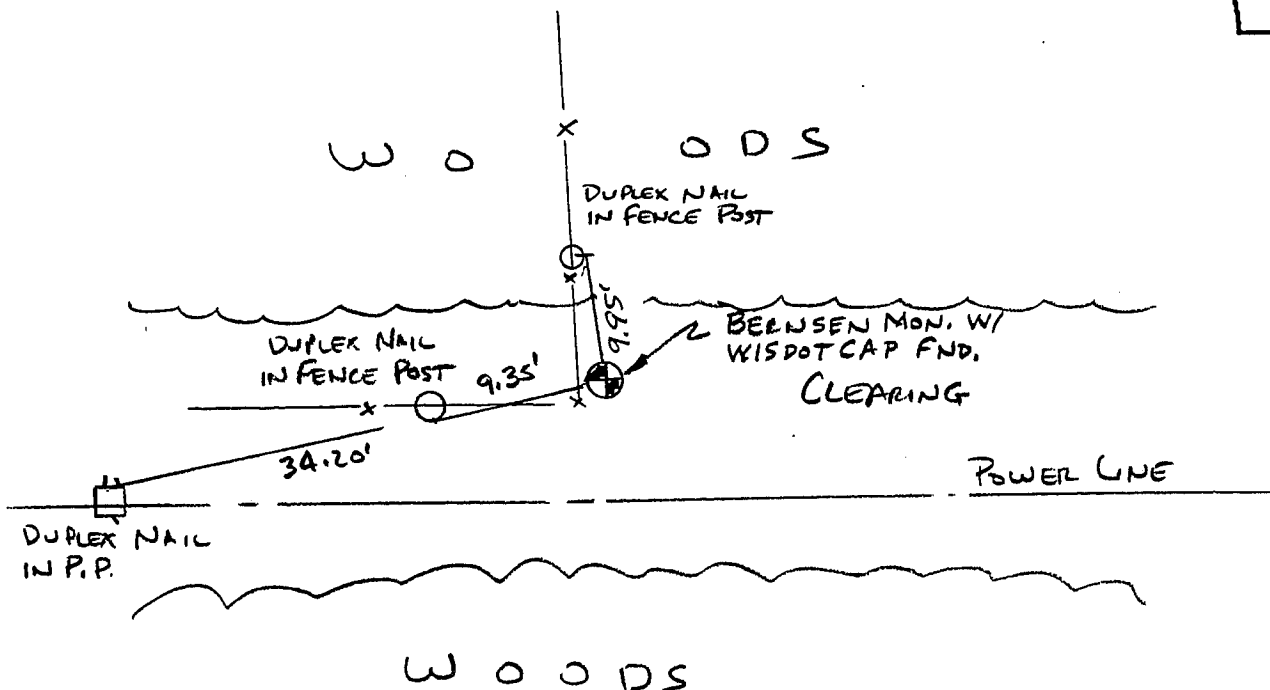
County Name GRANT		Name of Township / City / Village (Circle One) BEETOWN	
Surveyor Name PETER F. WOOD / STRAND ASSOC.			
Address, City, State, Zip Code 910 W. WINGRA DRIVE MADISON, WI 53715			
X (Easting) 1,740,093.67	Y (Northing) 292,662.03	Latitude	Longitude
Project ID 5215-02-21		Coordinate ID	



HORIZONTAL DATUM		UNITS		COORDINATE SYSTEM	
<input type="checkbox"/> NAD 27	<input checked="" type="checkbox"/> English	<input type="checkbox"/> Geodetic	<input type="checkbox"/> State Plane <u>SOUTH</u> Zone	<input type="checkbox"/> County _____	
<input checked="" type="checkbox"/> NAD 83 (91)	<input type="checkbox"/> Metric				



Location Diagram, showing corner identification name, bearing and distance references to at least four witness monuments, fence or occupational lines, centerlines of roads, and other site details for reference. Also, show the bearings and distances between the witness monuments.



Indicate fd. = found or pl. = placed in the diagram above
 Bearings used in the location sketch and basis for monument location are assumed, unless as noted.
 Monumentation Legend / Description of Corner and Witness Monuments:

If applicable, show any discrepancy between the location of the corner as restored or re-established and the location of that corner as previously restored or re-established by bearing and distance. Also, show the bearings and distances between the previous corner and at least two of the witness monuments.

Basis for Monument Location

1. Describe any record evidence, monument evidence, occupational evidence or any other material evidence measurements that you considered, and whether the monument was found or placed. Explain below, be specific, attach a separate sheet if necessary.
2. Was the corner:
 - a) found perpetuated,
 - b) restored through acceptance of obliterated evidence,
 - c) relocated by witness testimony, or
 - d) accepted as a remonumented corner of record and maintained with additional monumentation?
3. Was the corner re-established through lost corner proportionate methods? If so, show the method, including the directions and distances to other public land survey corners used as evidence or used in determining the corner location.

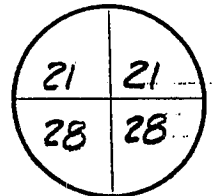
Please Type or Print

This corner's location was determined by F. Curtis Crook in the winter of 1992-1993 while engaged as a subconsultant for Strand Associates, Inc. This restoration work was done in conjunction with the R/W plat developed by Strand Associates, Inc. for Wisconsin DOT project I.D. 5215-02-21, STH 81 from CTH Y to STH 35. Ties were established by Strand Associates, Inc. to found monuments and/or coordinate positions set or determined by Mr. Crook. It is believed these monuments were set at the best available evidence of the corner location. Contact to Mr. Crook can be made at:

Box 68
Readstown, WI 54652

TEL: 608-629-5429

T. 4 N.-R. 4 W.
4th Principal Meridian
Corner _____




Certification

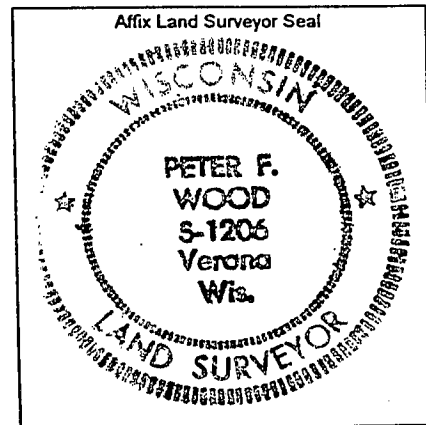
I, PETER F. WOOD

(type or print name) certify that the corner location shown on this record was determined by me or under my direction and control and that this U.S. Public Land Survey Monument Record is correct and complete to the best of my knowledge and belief, in accordance with Chapter A-E 7.08 of the Wisconsin Administrative Code.

Section Control Data Sheets have been filed in the County Surveyor's office, showing final measurements by direction and distance between all remonumented corners. Section Control Information is referenced by the following:

Date <u>11-30-99</u>	Project ID <u>5215-02-21</u>	Sheet(s)
-------------------------	---------------------------------	----------

X  5-1206 11-30-99
(Registered Land Surveyor Signature and Number) (Date)



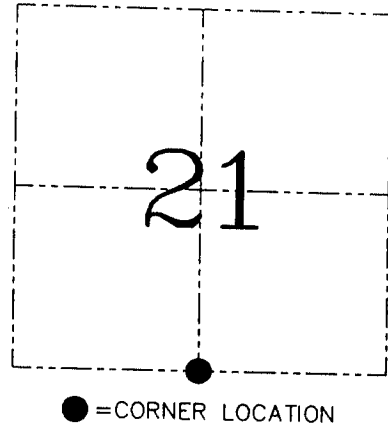
U.S. PUBLIC LAND SURVEY MONUMENT RECORD – GRANT COUNTY, WI
Section 21, Town 4 North, Range 4 West, Town of Beetown

CERTIFICATE

I, Larry L. Austin, do hereby certify that the corner location on this record was determined by me and/or under my direct supervision and that this U.S. public land survey monument record is correct and complete to the best of my knowledge and belief.

Dated this 5th day of May, 2002

Larry L. Austin
 Larry L. Austin S-1903



HISTORY OF CORNER ESTABLISHMENT

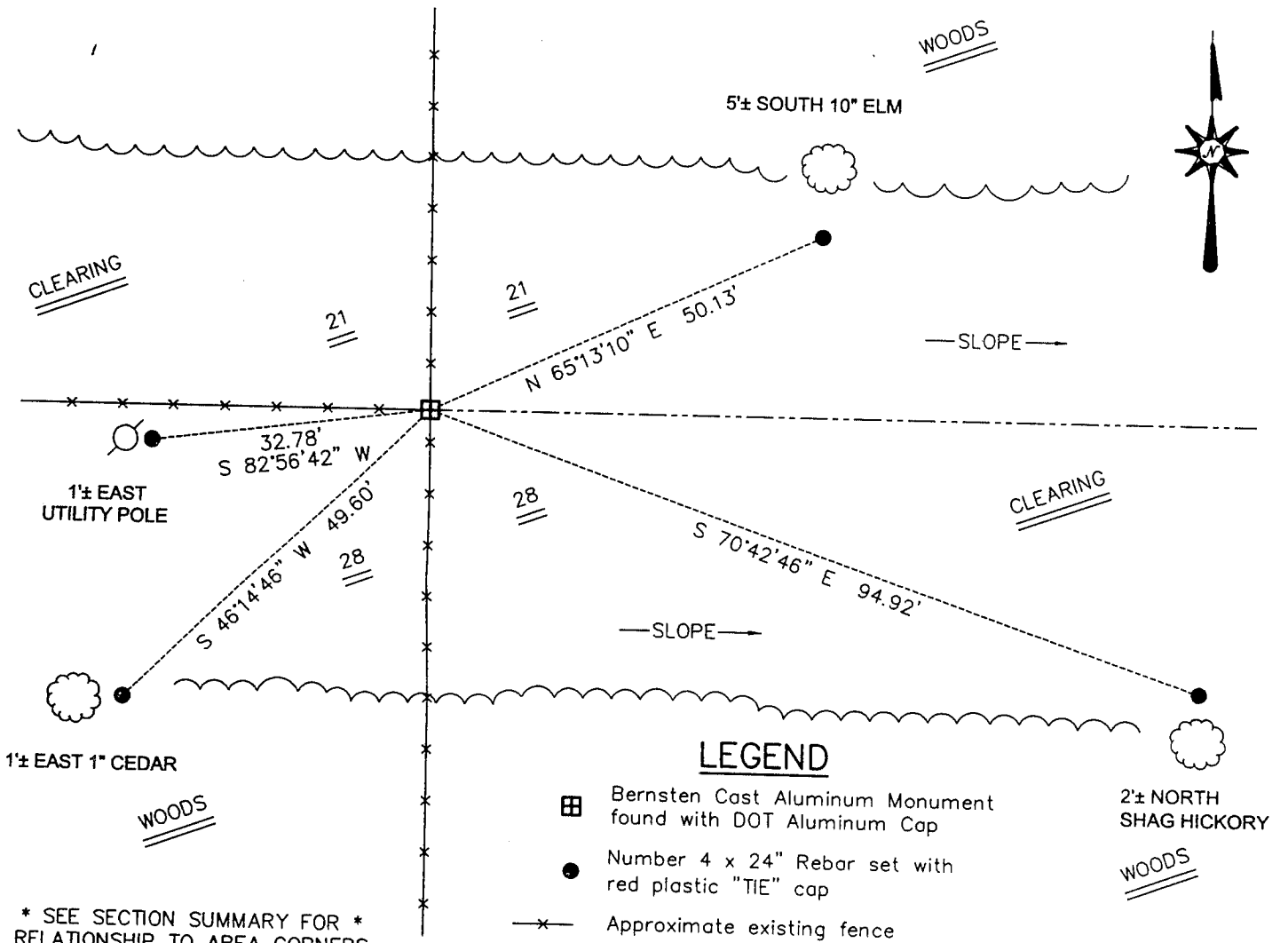
Corner was set in 1833 by Robert Clark. In 1844 Wiltse blazed the South line of Section 21. In 1992 Crook tied to the corner and set a Cast Aluminum Monument. In 1999 Wood tied Crook's Cast Aluminum monument.

DESCRIPTION OF CORNER EVIDENCE FOUND

I found the Bernsten Cast Aluminum monument and accepted it's location. I set new ties for the corner after review of Wood's ties and found them not to meet minimum standards. I verified this location using EDM & GPS methods.

DESCRIPTION OF CORNER AND WITNESS MONUMENTS, references and accessories used to perpetuate the original or re-established location of this corner. Witnesses to the corner location B. Sedgwick & S. Austin & B. Digman

SKETCH:



* SEE SECTION SUMMARY FOR *
 RELATIONSHIP TO AREA CORNERS

SKETCH NOT TO SCALE

AUSTIN ENGINEERING, LLC
 4211 HWY 81 EAST, LANCASTER, WI 53813
 PHONE 608-723-6363 FAX 608-723-6702

FIELDBOOK: SDR33, 2213
 G: \T4NR4W\21
 C: \SWA\TIE\T4NR4W\88
 CREW: BS-SB-SA-BD

DRAWN BY: SW AUSTIN
 APPROVED: LL AUSTIN

CORNER NUMBER 88