

# GRANT COUNTY U.S. PUBLIC LAND SURVEY MONUMENT RECORD

(A) IDENTIFY THE CORNER AS REFERENCED TO THE U.S. PUBLIC LAND SURVEY SYSTEM

● = CORNER MONUMENT RESTORED

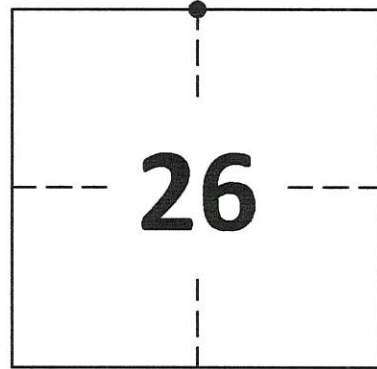
WITNESSES TO CORNER LOCATION:

JAMIE MEYER  
CALEB KOLANDER

GEOGRAPHIC COORDINATES  
NAD 83 (2011) ADJUSTMENT

LATITUDE: 42°47'59.0076"  
LONGITUDE: -90°48'42.2135"

WISCONSIN STATE PLANE SOUTH ZONE (US SF):  
NORTHING: 292,537.390  
EASTING: 1,750,647.441



SECTION 26  
TOWNSHIP 4 NORTH, RANGE 4 WEST  
TOWN OF BEETOWN

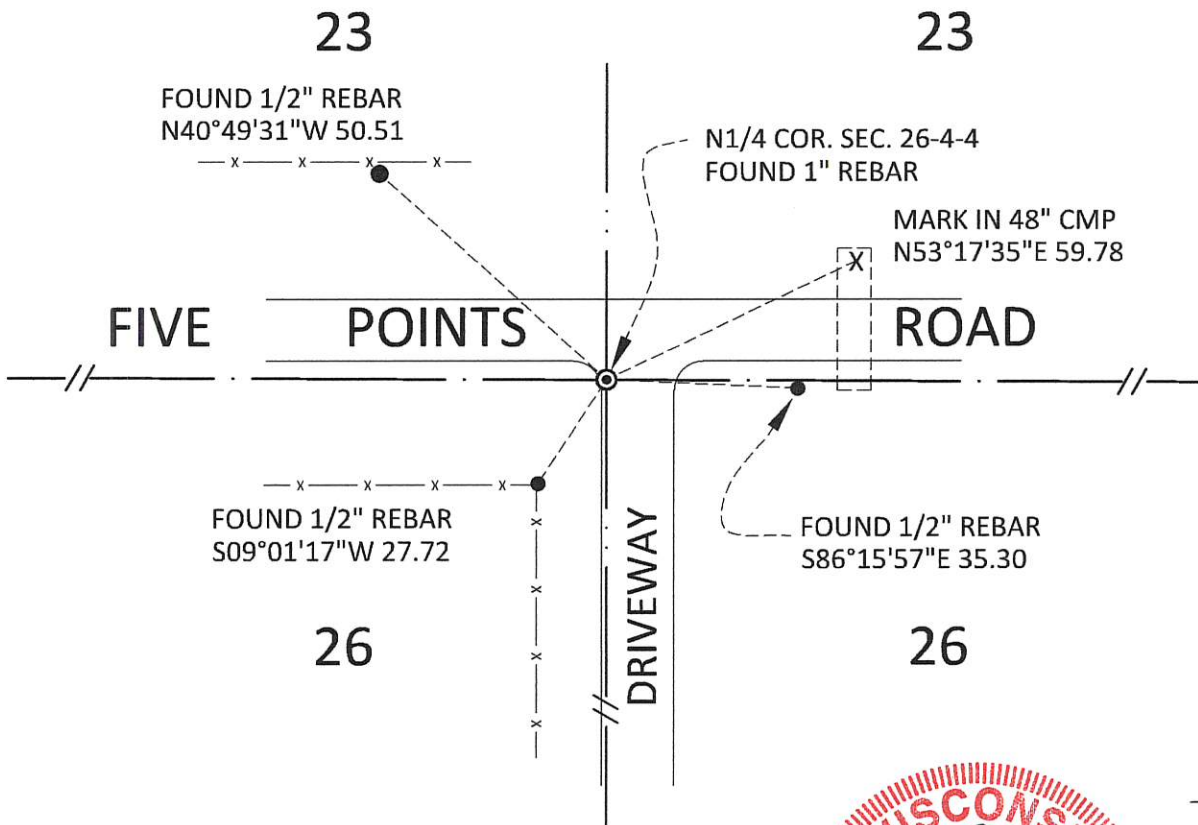
(B) DESCRIBE ANY RECORD EVIDENCE, MONUMENT EVIDENCE, OCCUPATIONAL EVIDENCE, TESTIMONIAL EVIDENCE OR ANY OTHER MATERIAL EVIDENCE YOU CONSIDERED, AND WHETHER THE MONUMENT WAS FOUND OR PLACED.

FOUND 1" REBAR SET BY LARRY L. AUSTIN IN 2003 ON A SINGLE PROPORTIONATE MEASUREMENT BETWEEN THE NW AND NE CORNER.

(C) IN THE PLAN VIEW DRAWING BELOW, PROVIDE REFERENCE TIES TO AT LEAST 4 WITNESS MONUMENTS. WITNESS MONUMENTS SHALL BE MADE OF CONCRETE, NATURAL STONE, IRON, BEARING TREES OR ANY OTHER EQUALLY DURABLE MATERIAL. DEPICT THE RELEVANT MONUMENTS AND REFERENCE TIES WITH SUFFICIENT DETAIL TO ENABLE ACCURATE RELOCATION OF THE CORNER IF THE CORNER MONUMENT IS DISTURBED.

(D) LEGEND

— x — x — x — x — BARBED WIRE FENCE



**GRANT COUNTY  
U.S. PUBLIC LAND SURVEY MONUMENT RECORD**

(E) DESCRIBE ANY MATERIAL DISCREPANCY BETWEEN THE LOCATION OF THE CORNER AS RESTORED OR REESTABLISHED AND THE LOCATION OF THAT CORNER AS PREVIOUSLY RESTORED OR REESTABLISHED BY DISTANCE AND DIRECTION. SHOW THE DISCREPANCY ON THE PLAN VIEW DRAWING UNDER (D), ABOVE. SHOW THE DISTANCES BETWEEN THE CORNER AS PREVIOUSLY RESTORED OR REESTABLISHED AND (1) THE CORNER AS RESTORED OR REESTABLISHED, AND (2) TO AT LEAST 2 OF THE WITNESS MONUMENTS SHOWN ON THE DRAWING IN (D) ABOVE.

N/A

(F) WAS THE CORNER RESTORED THROUGH ACCEPTANCE OF (1) AN OBLITERATED EVIDENCE LOCATION, OR (2) A FOUND PERPETUATED LOCATION?

FOUND AT PERPETUATED LOCATION

(G&H) WAS THE CORNER REESTABLISHED THROUGH LOST CORNER PROPORTIONATE METHODS? IF SO, SHOW THE METHOD, INCLUDING THE DIRECTIONS AND DISTANCES TO OTHER PUBLIC LAND SURVEY CORNERS USED AS EVIDENCE OR USED FOR PROPORTIONING IN DETERMINING THE CORNER LOCATION.

N/A

1. CORNER HISTORY: IN 1833 ROBERT CLARK SET ORIGINAL CORNER
2. IN 1875, BOOK B, PAGE 537, JOEL BARBER FOUND THE ORIGINAL CORNER
3. IN 1971, BOOK F, PAGE 226, HOMER RALPH, JR. SHOWS A POINT IN THE CENTERLINE OF A TOWNSHIP ROAD BUT DOES NOT INDICATE ANY MONUMENT.
4. IN 1972, BOOK F, PAGE 227, HOMER RALPH, JR. SHOWS A POINT IN THE CENTERLINE OF A TOWNSHIP ROAD BUT DOES NOT INDICATE ANY MONUMENT.
5. IN 1972, BOOK F, PAGE 228, HOMER RALPH, JR. SHOWS A POINT IN THE CENTERLINE OF A TOWNSHIP ROAD BUT DOES NOT INDICATE A MONUMENT.
6. IN 2003, BOOK 13, PAGE 53, LARRY L. AUSTIN SET AN 8" X 30" REBAR WITH GRANT COUNTY ALUMINUM CAP AT A SINGLE PROPORTIONATE MEASUREMENT BETWEEN THE NW AND NE CORNERS OF SECTION 26 AND FILED A US PUBLIC LAND SURVEY MONUMENT RECORD.
7. IN 2013, BOOK 33, PAGE 36, AARON J. AUSTIN FOUND A NUMBER 8 REBAR WITH GRANT COUNTY ALUMINUM CAP.
8. IN 2015, BOOK 36, PAGE 63, AARON J. AUSTIN FOUND A NUMBER 8 REBAR AT THIS CORNER
9. IN 2019, BOOK 43, PAGE 70, AARON J. AUSTIN FOUND AN ALUMINUM CAPPED REBAR AT THIS CORNER.
10. IN 2020 GREGG STROEING ACCEPTED THIS POSITION OF THE 1" REBAR SET BY LARRY L. AUSTIN IN 2003 AND VERIFIED AND SET NEW TIES AS SHOWN IN PART C

(I) I, GREGG STROEING P.L.S. - 2753, CERTIFY THAT THE CORNER LOCATION SHOWN ON THIS RECORD WAS DETERMINED BY ME OR UNDER MY DIRECTION AND CONTROL AND THAT THIS U.S. PUBLIC LAND SURVEY MONUMENT RECORD IS CORRECT AND COMPLETE TO THE BEST OF MY KNOWLEDGE AND BELIEF.

SIGNATURE

12/01/2020

DATE



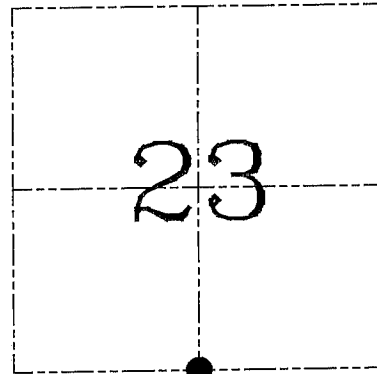
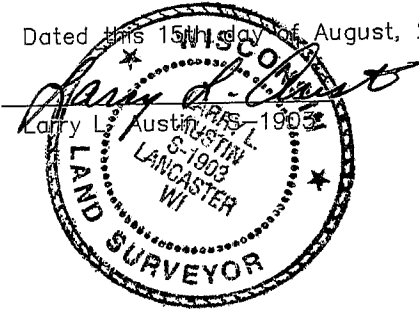
CORNER NO. 84

**U.S. PUBLIC LAND SURVEY MONUMENT RECORD – GRANT COUNTY, WI**  
**Section 23, Town 4 North Range 4 West, Town of Beetown**

**CERTIFICATE**

I, Larry L. Austin, do hereby certify that the corner location on this record was determined by me and/or under my direct supervision and that this U.S. public land survey monument record is correct and complete to the best of my knowledge and belief.

Dated this 15th day of August, 2003



● = CORNER LOCATION

**HISTORY OF CORNER ESTABLISHMENT**

Corner was originally set in 1833 by Clark Freeman was at the corner in 1842. No other record of the corner was found.

**DESCRIPTION OF CORNER EVIDENCE FOUND**

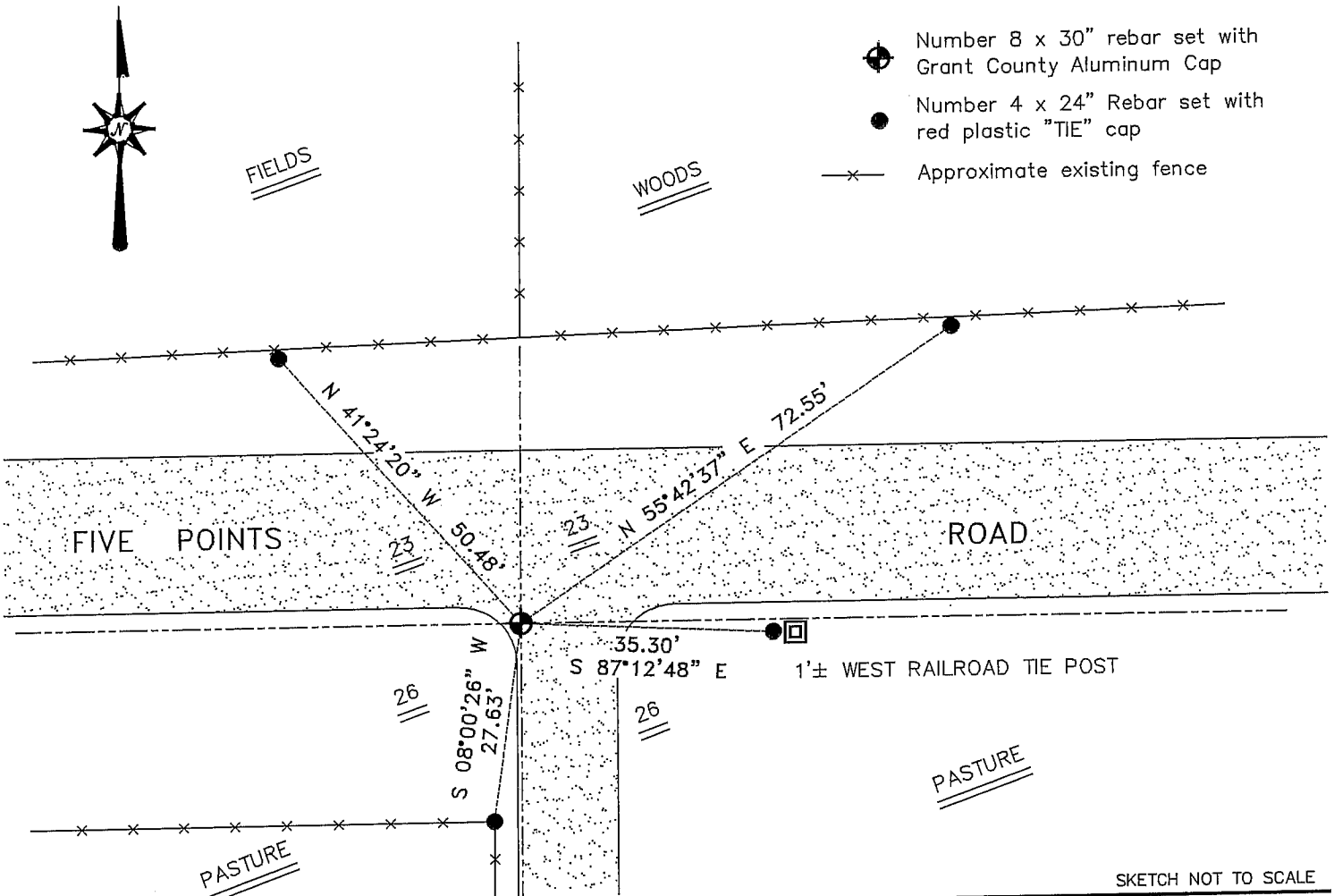
I reset the corner based on a straight line proportion between the Southwest and Southeast corners of Section 23. Verified this location using EDM & GPS methods.

**DESCRIPTION OF CORNER AND WITNESS MONUMENTS**, references and accessories used to perpetuate the original or re-established location of this corner. Witnesses to corner location Bobby Sedgwick & Shelby Blindert & Brad Digman

**SKETCH:**

\* SEE SECTION SUMMARY FOR \*  
RELATIONSHIP TO AREA CORNERS

**LEGEND**



**AUSTIN ENGINEERING, LLC**

4211 HWY 81 EAST, LANCASTER, WI 53813  
 PHONE 608-723-6363 FAX 608-723-6702

FIELDBOOK: TDS RNGR, 2311  
 G: \T4NR4W\22  
 H: \TIE\T4NR4W\84  
 JOB NUMBER 03S197

DRAWN BY: SW AUSTIN  
 APPROVED: LL AUSTIN

**CORNER NUMBER 84**