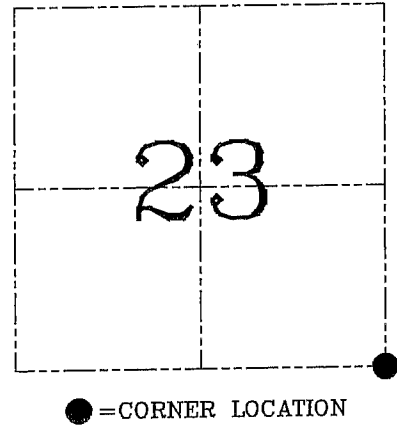
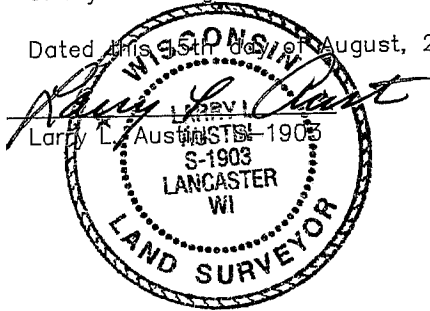


**U.S. PUBLIC LAND SURVEY MONUMENT RECORD – GRANT COUNTY, WI**  
**Section 23, Town 4 North Range 4 West, Town of Beetown**

**CERTIFICATE**

I, Larry L. Austin, do hereby certify that the corner location on this record was determined by me and/or under my direct supervision and that this U.S. public land survey monument record is correct and complete to the best of my knowledge and belief.

Dated this 15th day of August, 2003



**HISTORY OF CORNER ESTABLISHMENT**

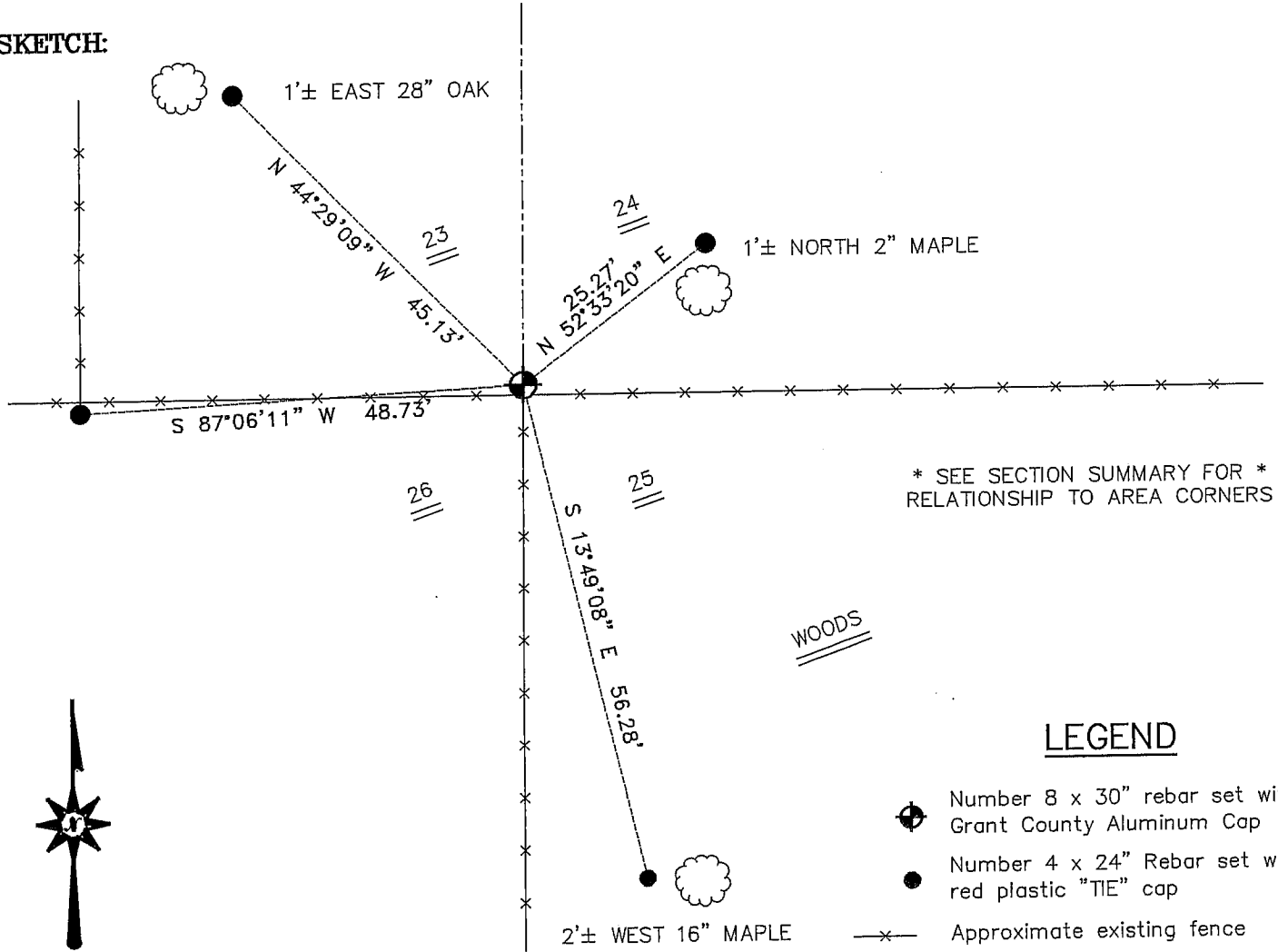
Corner was originally set in 1833 by Clark.  
 In 1877 Barber set the corner with new bearing trees.

**DESCRIPTION OF CORNER EVIDENCE FOUND**

I found an existing fence corner and accepted it's location after an EDM & GPS traverse of the area.

**DESCRIPTION OF CORNER AND WITNESS MONUMENTS**, references and accessories used to perpetuate the original or re-established location of this corner. Witnesses to corner location Bobby Sedgwick & Shelby Blindert & Brad Digman

**SKETCH:**



\* SEE SECTION SUMMARY FOR \*  
 RELATIONSHIP TO AREA CORNERS

**LEGEND**

- Number 8 x 30" rebar set with Grant County Aluminum Cap
- Number 4 x 24" Rebar set with red plastic "TIE" cap
- Approximate existing fence

SKETCH NOT TO SCALE

**AUSTIN ENGINEERING, LLC**

4211 HWY 81 EAST, LANCASTER, WI 53813  
 PHONE 608-723-6363 FAX 608-723-6702

FIELDBOOK: TDS RNGR, 2311  
 G: \T4NR4W\22  
 H: \TIE\T4NR4W\83  
 JOB NUMBER 03S197

DRAWN BY: SW AUSTIN  
 APPROVED: LL AUSTIN

**CORNER NUMBER 83**