

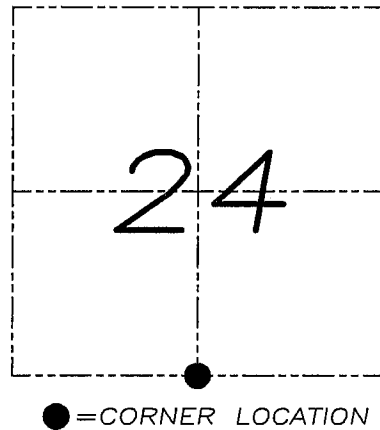
# U.S. PUBLIC LAND SURVEY MONUMENT RECORD

Section 24, Town 4 North Range 4 West, Town of Bloomington, Grant County, Wisconsin

## CERTIFICATE

I, Larry L. Austin, do hereby certify that the corner location on this record was determined by me and/or under my direct supervision and that this U.S. public land survey monument record is correct and complete to the best of my knowledge and belief.

*Larry L. Austin*  
 Larry L. Austin, S-1903



## HISTORY OF CORNER

Corner was originally set in 1833 by Clark. In 1844 Wiltse tied to the corner. In 1848 Stuntz tied to the corner. In 1875 Barber tied to the corner. No other record of the corner was found.

## CORNER EVIDENCE FOUND

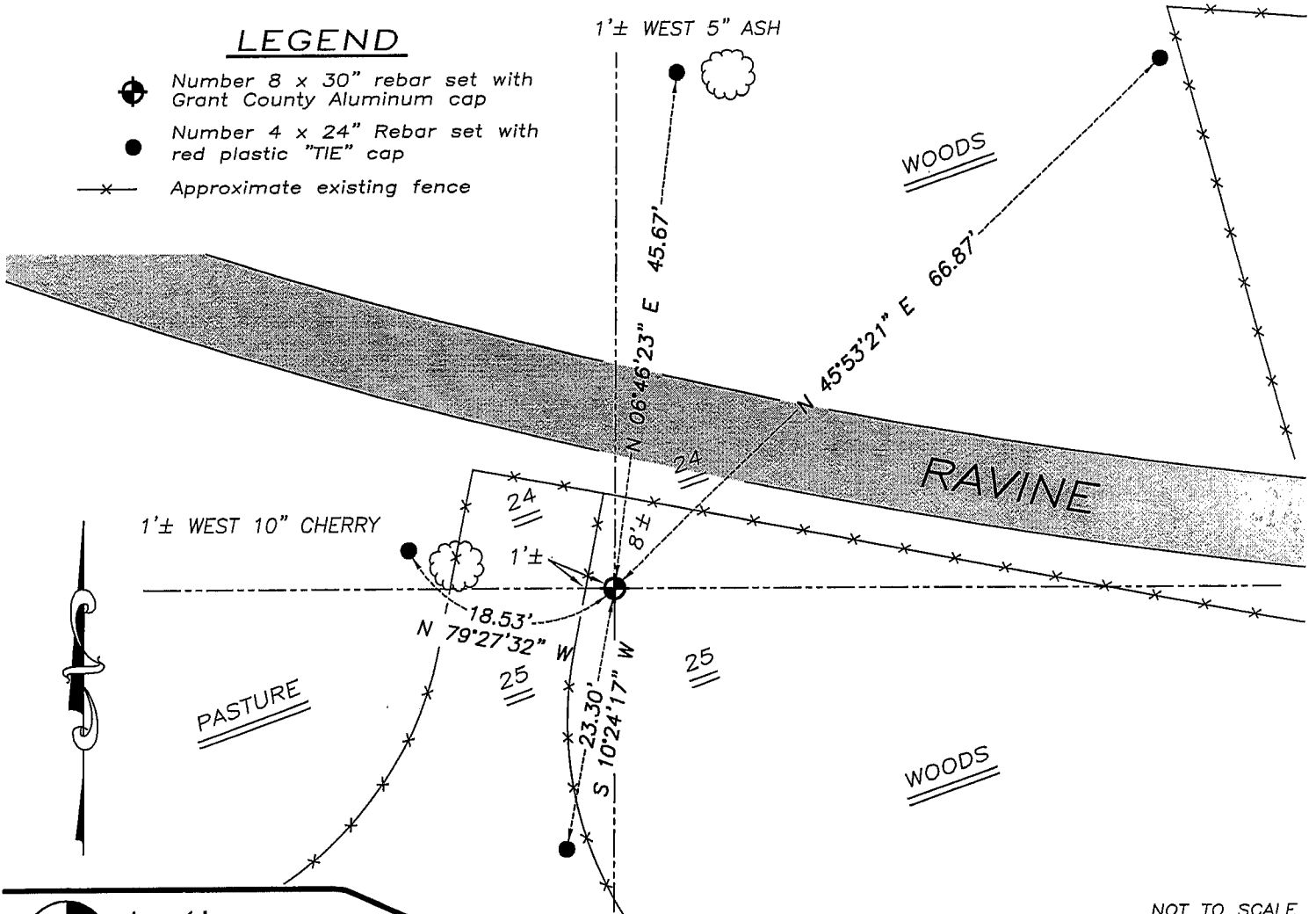
I reset the corner based on Barber's dimensions which fit nearly perfect. Verified this location using EDM & GPS methods.

DESCRIPTION OF CORNER AND WITNESS MONUMENTS, references and accessories used to perpetuate the original or re-established location of this corner. Witnesses to monument location Bobby Sedgwick & Brad Digman & Shane Austin

## SKETCH:

### LEGEND

- Number 8 x 30" rebar set with Grant County Aluminum cap
- Number 4 x 24" Rebar set with red plastic "TIE" cap
- x— Approximate existing fence



NOT TO SCALE



**Austin Engineering LLC**

4211 HWY 81 E, LANCASTER, WI 53813  
 PHONE 608-723-6363 FAX 608-723-6702

JOB NUMBER 07S360  
 FIELDBOOK: TDSR, 2710  
 G:\T4NR3W\17  
 H:\TIE\T4NR4W\82

DRAWN BY: SW AUSTIN  
 APPROVED: LL AUSTIN