

GRANT COUNTY CERTIFIED LAND CORNER

CORNER NUMBER 78

CERTIFICATE:

I, Larry L. Austin, do hereby certify that on the 5th day of October, 2000, I found evidence of the East 1/4 corner of Section 22, Town 4 North, Range 4 West, of the 4th Principal Meridian, and I re-established said corner according to the Wisconsin statutes as shown and described hereon.

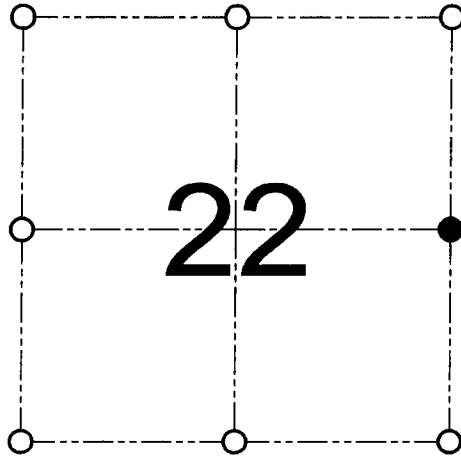
Dated this 15th day of November, 2000

Larry L. Austin
Larry L. Austin S-1903

Grant County Coor.

N 508749.5

E 789090.4



● = CORNER LOCATION
EAST 1/4 CORNER OF SECTION 22, T 4 N R 4 W TOWN OF BEETOWN

HISTORY OF ORIGINAL CORNER ESTABLISHMENT:

Corner was originally set in 1833 by Clark.
No other record of the corner was found.

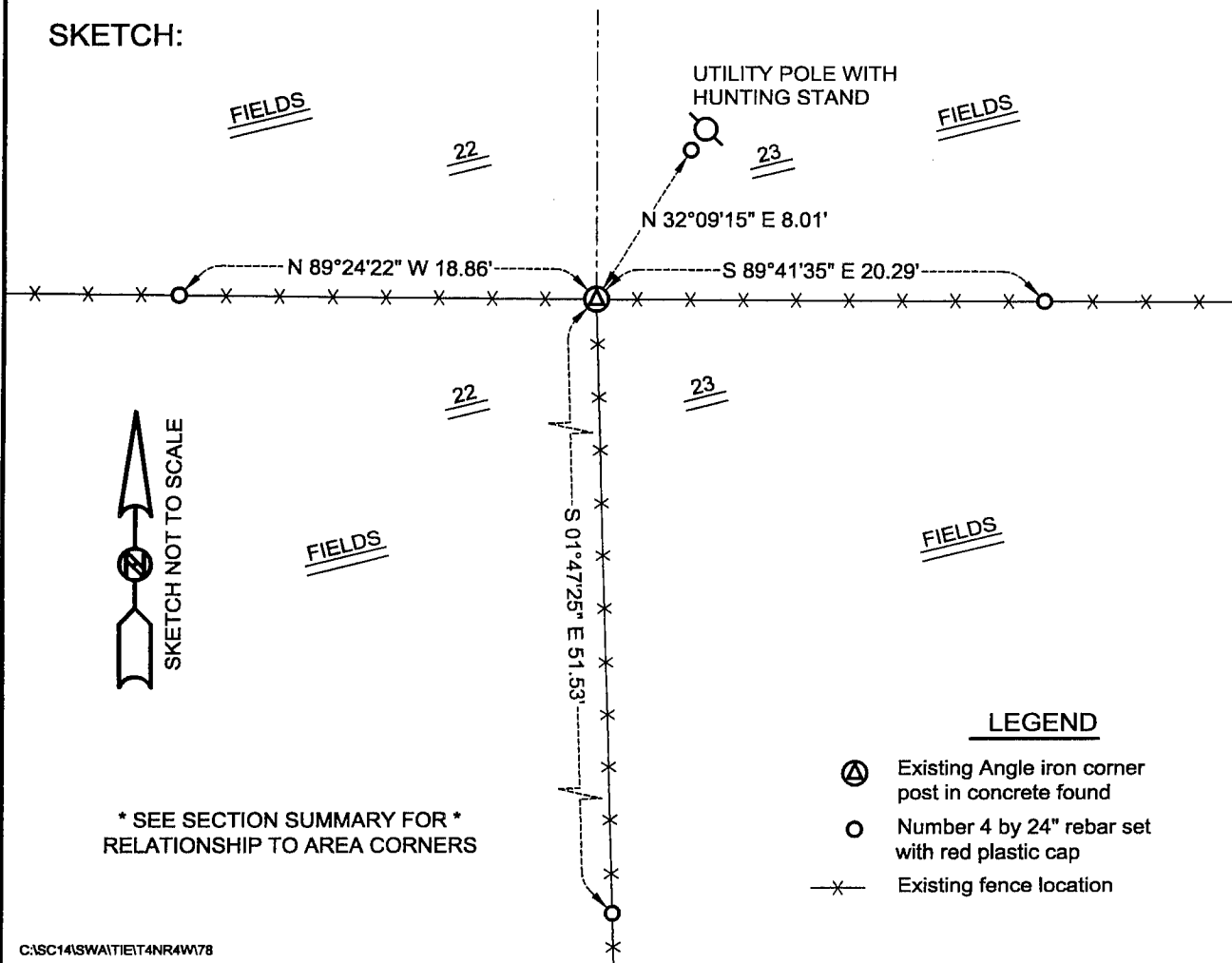
DESCRIPTION OF CORNER EVIDENCE FOUND:

I found a fence corner and accepted it's location after an EDM & GPS traverse of the area.

DESCRIPTION OF CORNER AND WITNESS MONUMENTS, references and accessories used to perpetuate the original or re-established location of this corner

WITNESS TO THE CORNER LOCATION: SHANE AUSTIN & SHELBY BLINDERT & BOBBY SEDGWICK

SKETCH:



* SEE SECTION SUMMARY FOR *
RELATIONSHIP TO AREA CORNERS

LEGEND

- ⊙ Existing Angle iron corner post in concrete found
- Number 4 by 24" rebar set with red plastic cap
- x— Existing fence location