

U.S. PUBLIC LAND SURVEY MONUMENT RECORD - GRANT COUNTY, WI

Section 22, Town 4 North Range 4 West, Town of Beetown (a)

NOTE: This form is intended and designed to fulfill all requirements of the Wisconsin Administrative Code Chapter A-E 7.08, U.S. Public Land Survey Monument Record (3) (a) (b) (c) (d) (e) (f) (g) (h) (i).

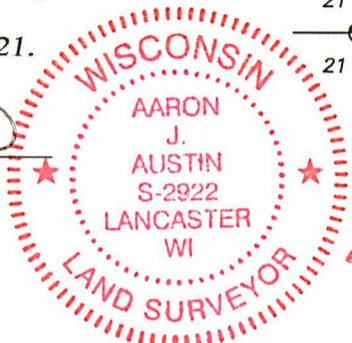
CERTIFICATE: (i)

I, Aaron J. Austin, Wisconsin Professional Land Surveyor, do hereby certify that the corner location on this record was determined by me and/or under my direct supervision and that this U.S. Public Land Survey Monument Record is correct and complete to the best of my knowledge and belief.

Dated this 16th day of March, 2021.

Aaron J. Austin (signature)

Aaron J. Austin, S-2922



☉ = CORNER LOCATION

Grant County Coordinates: NAD 83 (2011) Northing: 508,733.25 Easting: 783,812.62

HISTORY OF CORNER ESTABLISHMENT:

Original corner was set in 1833 by Robert Clark. Curtis Crook set a 5/8" Rebar in the winter of 1992-1993. Peter Wood prepared a Survey Monument Record dated 11/30/1999. Larry Austin set a 1" Rebar with a Grant County cap and prepared a Survey Monument Record dated 11/15/2000.

DESCRIPTION OF CORNER EVIDENCE FOUND: (b) (f) (g) (h)

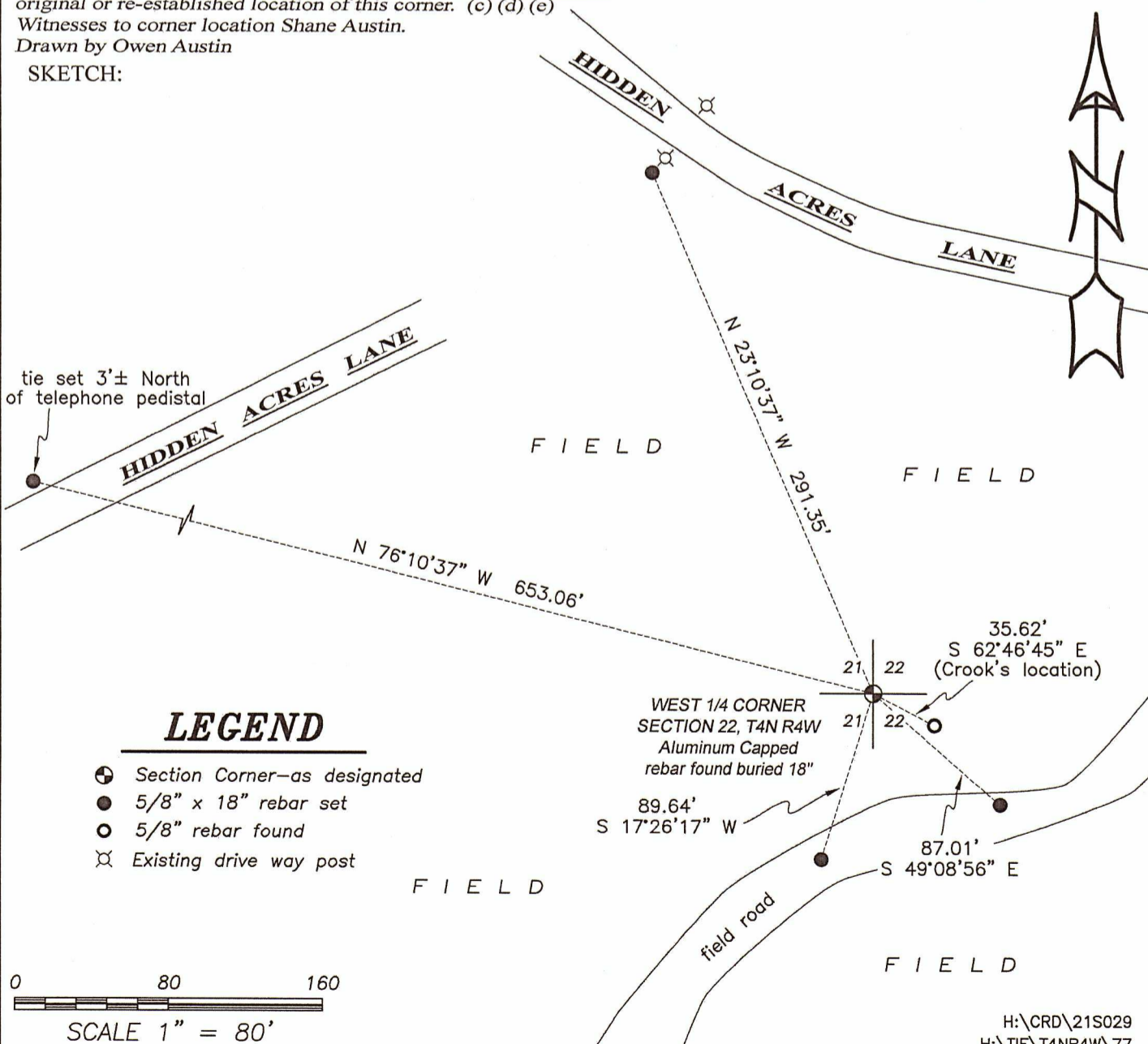
I found the 1" rebar with the Grant County cap as set by Larry. I set four witness corners after I verified the Monument's location with G.P.S. and E.D.M. methods.

DESCRIPTION OF CORNER AND WITNESS MONUMENTS, references and accessories used to perpetuate the original or re-established location of this corner. (c) (d) (e)

Witnesses to corner location Shane Austin.

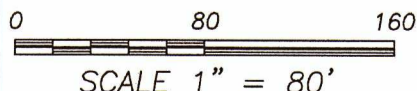
Drawn by Owen Austin

SKETCH:



LEGEND

- ☉ Section Corner—as designated
● 5/8" x 18" rebar set
○ 5/8" rebar found
⊗ Existing drive way post



GRANT COUNTY CERTIFIED LAND CORNER

CORNER NUMBER 77

CERTIFICATE:

I, Larry L. Austin, do hereby certify that on the 5th day of October, 2000, I found no evidence of the West 1/4 corner of Section 22, Town 4 North, Range 4 West, of the 4th Principal Meridian, and I re-established said corner according to the Wisconsin statutes as shown and described hereon.

Dated this 15th day of November, 2000

Larry L. Austin
Larry L. Austin S-1903

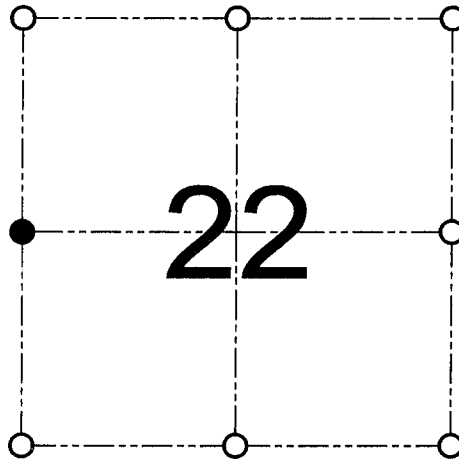
Grant County Cook

N 508736.3

E 783811.9



SEAL



● = CORNER LOCATION

WEST 1/4 CORNER OF
SECTION 22, T 4 N R 4 W
TOWN OF BEETOWN

HISTORY OF ORIGINAL CORNER ESTABLISHMENT:

Corner was originally set in 1833 by Robert Clark.
In 1992 Curtis Crook set the corner.

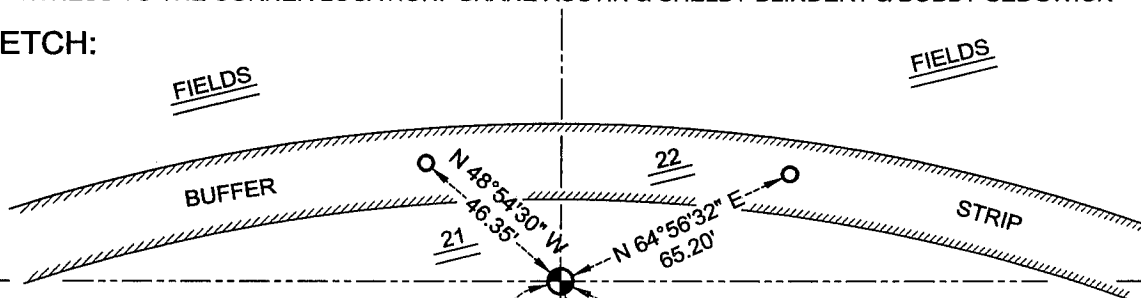
DESCRIPTION OF CORNER EVIDENCE FOUND:

I found Crooks location and did not accept it. I reset the corner proportionately between the Northwest and Southwest corners of Section 22. Verified this location using EDM & GPS methods.

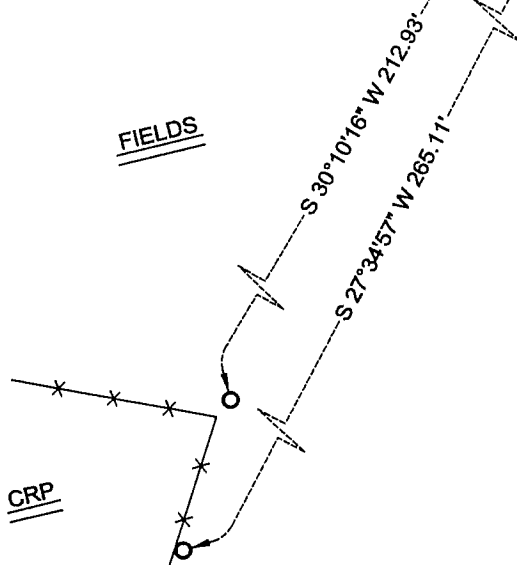
DESCRIPTION OF CORNER AND WITNESS MONUMENTS, references and accessories used to perpetuate the original or re-established location of this corner

WITNESS TO THE CORNER LOCATION: SHANE AUSTIN & SHELBY BLINDERT & BOBBY SEDGWICK

SKETCH:



* SEE SECTION SUMMARY FOR *
RELATIONSHIP TO AREA CORNERS



LEGEND

- Number 8 by 30" rebar set with Grant County aluminum cap
- ⊙ Number 5 iron bar found
- Number 4 by 24" rebar set with red plastic cap
- x— Existing fence location

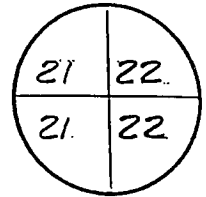
S. PUBLIC LAND SURVEY MONUMENT RECORD

Wisconsin Department of Transportation

DOT1291 96 (Replaces ED716)

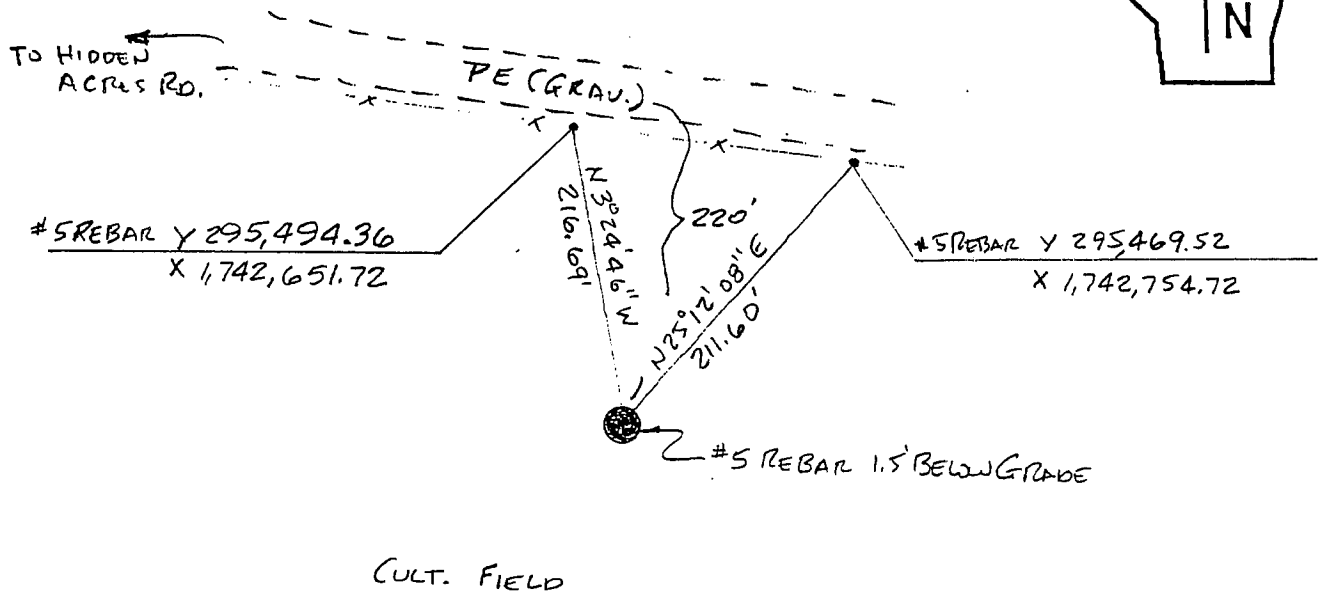
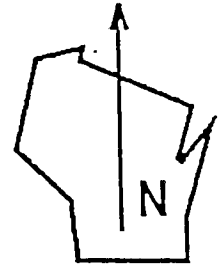
T. 4 N.-R. 4 W.
4th Principal Meridian
Corner _____

County Name GRANT		Name of Township/City/Village (Circle One) BEETOWN	
Surveyor Name PETER F. WOOD/STRAND ASSOC.			
Address, City, State, Zip Code 910 WEST WINGRA DRIVE MADISON, WI 53715			
X (Easting) 1,742,664.62	Y (Northing) 295,278.07	Latitude	Longitude
Project ID 5215-02-21		Coordinate ID	



HORIZONTAL DATUM <input type="checkbox"/> NAD 27 <input checked="" type="checkbox"/> NAD 83 (91)	UNITS <input checked="" type="checkbox"/> English <input type="checkbox"/> Metric	COORDINATE SYSTEM <input type="checkbox"/> Geodetic <input checked="" type="checkbox"/> State Plane <u>SOUTH</u> Zone <input type="checkbox"/> County _____
--	---	--

Location Diagram, showing corner identification name, bearing and distance references to at least four witness monuments, fence or occupational lines, centerlines of roads, and other site details for reference. Also, show the bearings and distances between the witness monuments.



Indicate fd. = found or pl. = placed in the diagram above
 Bearings used in the location sketch and basis for monument location are assumed, unless as noted.
 Monumentation Legend / Description of Corner and Witness Monuments:

If applicable, show any discrepancy between the location of the corner as restored or re-established and the location of that corner as previously restored or re-established by bearing and distance. Also, show the bearings and distances between the previous corner and at least two of the witness monuments.

Basis for Monument Location

1. Describe any record evidence, monument evidence, occupational evidence or any other material evidence including traverse measurements that you considered, and whether the monument was found or placed. Explain below, be specific, and attach a separate sheet if necessary.
2. Was the corner:
 - a) found perpetuated,
 - b) restored through acceptance of obliterated evidence,
 - c) relocated by witness testimony, or
 - d) accepted as a re-monumented corner of record and maintained with additional monumentation?
3. Was the corner re-established through lost corner proportionate methods? If so, show the method, including the directions and distances to other public land survey corners used as evidence or used in determining the corner location.

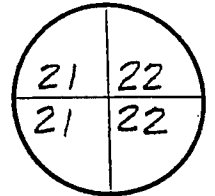
Please Type or Print

This corner's location was determined by F. Curtis Crook in the winter of 1992-1993 while engaged as a subconsultant for Strand Associates, Inc. This restoration work was done in conjunction with the R/W plat developed by Strand Associates, Inc. for Wisconsin DOT project I.D. 5215-02-21, STH 81 from CTH Y to STH 35. Ties were established by Strand Associates, Inc. to found monuments and/or coordinate positions set or determined by Mr. Crook. It is believed these monuments were set at the best available evidence of the corner location. Contact to Mr. Crook can be made at:

Box 68
Readstown, WI 54652

TEL: 608-629-5429

T. 4 N.- R. 4 W.
4th Principal Meridian
Corner _____



Certification
I, PETER F. WOOD

(type or print name) certify that the corner location shown on this record was determined by me or under my direction and control and that this U.S. Public Land Survey Monument Record is correct and complete to the best of my knowledge and belief, in accordance with Chapter A-E 7.08 of the Wisconsin Administrative Code.

Section Control Data Sheets have been filed in the County Surveyor's office, showing final measurements by direction and distance between all re-monumented corners. Section Control Information is referenced by the following:

Date	Project ID	Sheet(s)
11-30-99	5215-02-21	

X Peter F. Wood 5-1206 11-30-99
(Registered Land Surveyor Signature and Number) (Date)

