

440660

U.S. PUBLIC LAND SURVEY MONUMENT RECORD - GRANT COUNTY, WI

Section 22, Town 4 North Range 4 West, Town of Beetown (a)

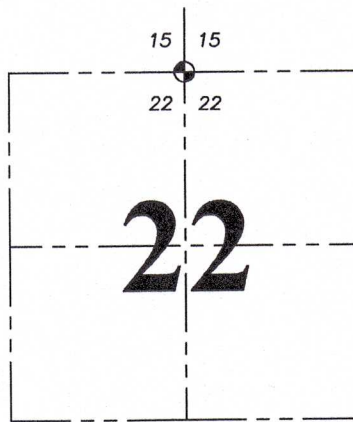
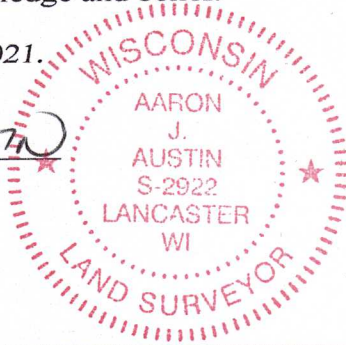
NOTE: This form is intended and designed to fulfill all requirements of the Wisconsin Administrative Code Chapter A-E 7.08, U.S. Public Land Survey Monument Record (3) (a) (b) (c) (d) (e) (f) (g) (h) (i).

CERTIFICATE: (i)

I, Aaron J. Austin, Wisconsin Professional Land Surveyor, do hereby certify that the corner location on this record was determined by me and/or under my direct supervision and that this U.S. Public Land Survey Monument Record is correct and complete to the best of my knowledge and belief.

Dated this 11th day of March, 2021.

Aaron J. Austin
Aaron J. Austin, S-2922



⊙ = CORNER LOCATION

Grant County Coordinates:
NAD 83 (2011)
Northing: 511,410.04
Easting: 786,352.47

HISTORY OF CORNER ESTABLISHMENT:

Original corner was set in 1832 by Robert Clark.
Timothy Moore set a Berntsen Monument and prepared a Survey Monument Record dated 2/26/1988.
Peter Wood found the Berntsen Monument with a DOT Aluminum cap and prepared a Survey Monument Record dated 11/30/1999.

DESCRIPTION OF CORNER EVIDENCE FOUND: (b) (f) (g) (h)

I found the Berntsen Monument with a Wisconsin DOT Aluminum Cap. I established four witness corners after I verified the Monument's location with G.P.S. and E.D.M. methods.

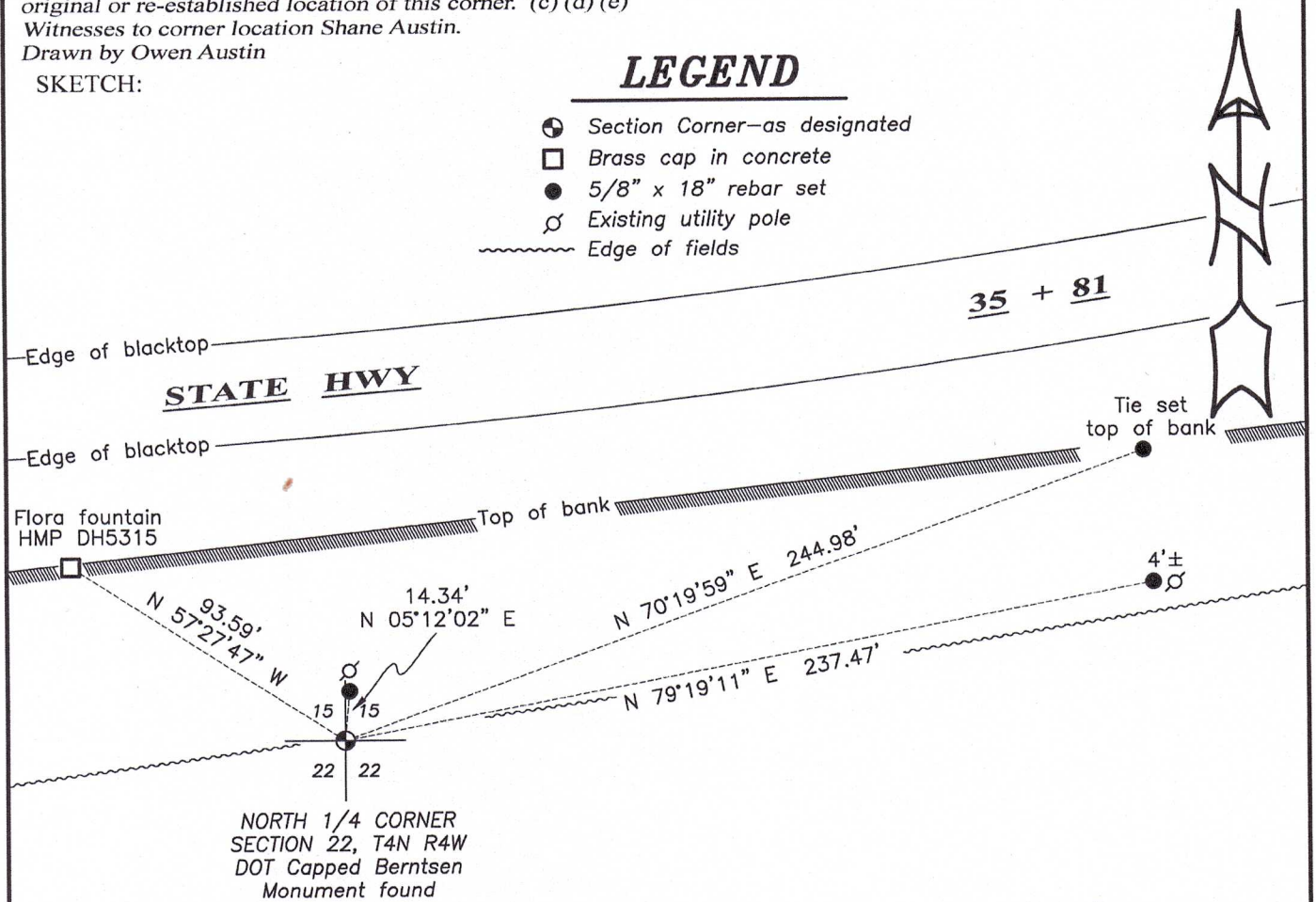
DESCRIPTION OF CORNER AND WITNESS MONUMENTS: references and accessories used to perpetuate the original or re-established location of this corner. (c) (d) (e)

Witnesses to corner location Shane Austin.
Drawn by Owen Austin

SKETCH:

LEGEND

- ⊙ Section Corner—as designated
- Brass cap in concrete
- 5/8" x 18" rebar set
- ⊕ Existing utility pole
- ~~~~~ Edge of fields



F I E L D

F I E L D

0 50 100

SCALE 1" = 50'

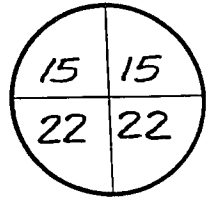
H:\CRD\21S029
H:\TIE\T4NR4W\66

U.S. PUBLIC LAND SURVEY MONUMENT RECORD

DT1291 96 (Replaces ED716)

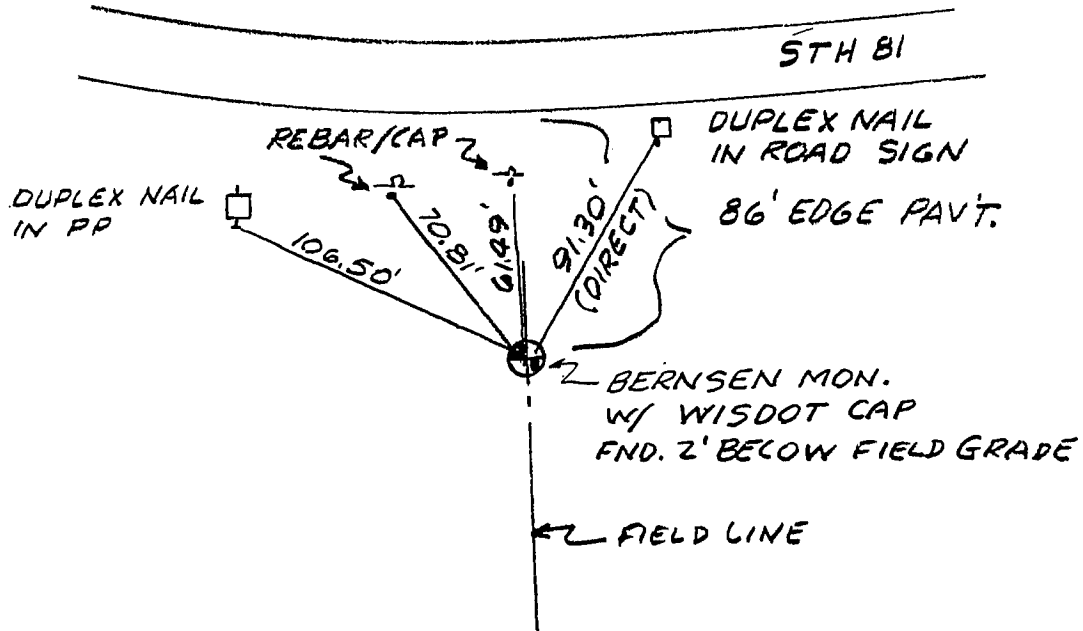
T. 4 N. - R. 4 V
 4th Principal Meridian
 Corner _____

County Name GRANT		Name of <u>Township</u> / City / Village (Circle One) BEE TOWN	
Surveyor Name PETER F. WOOD / STRAND ASSOC.			
Address, City, State, Zip Code 910 W. WINGRA DRIVE MADISON, WI 53715			
X (Easting) 1,745,199.67	Y (Northing) 297,943.75	Latitude	Longitude
Project ID 5215-02-21		Coordinate ID	



HORIZONTAL DATUM		UNITS	COORDINATE SYSTEM
<input checked="" type="checkbox"/> NAD 27	<input checked="" type="checkbox"/> English	<input type="checkbox"/> Geodetic	<input checked="" type="checkbox"/> State Plane <u>SOUTH</u> Zone
<input type="checkbox"/> NAD 83 (91)	<input type="checkbox"/> Metric	<input checked="" type="checkbox"/> County _____	

Location Diagram, showing corner identification name, bearing and distance references to at least four witness monuments, fence or occupational lines, centerlines of roads, and other site details for reference. Also, show the bearings and distances between the witness monuments.



Indicate fd. = found or pl. = placed in the diagram above
 Bearings used in the location sketch and basis for monument location are assumed, unless as noted.
 Monumentation Legend / Description of Corner and Witness Monuments:

If applicable, show any discrepancy between the location of the corner as restored or re-established and the location of that as previously restored or re-established by bearing and distance. Also, show the bearings and distances between the previous corner and at least two of the witness monuments.
 See rev

Basis for Monument Location

1. Describe any record evidence, monument evidence, occupational evidence or any other material evidence including travel measurements that you considered, and whether the monument was found or placed. Explain below, be specific, and attach a separate sheet if necessary.
2. Was the corner:
 - a) found perpetuated,
 - b) restored through acceptance of obliterated evidence,
 - c) relocated by witness testimony, or
 - d) accepted as a remonumented corner of record and maintained with additional monumentation?
3. Was the corner re-established through lost corner proportionate methods? If so, show the method, including the directions and distances to other public land survey corners used as evidence or used in determining the corner location.

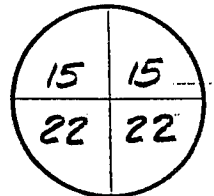
Please Type or Print

This corner's location was determined by F. Curtis Crook in the winter of 1992-1993 while engaged as a subconsultant for Strand Associates, Inc. This restoration work was done in conjunction with the R/W plat developed by Strand Associates, Inc. for Wisconsin DOT project I.D. 5215-02-21, STH 81 from CTH Y to STH 35. Ties were established by Strand Associates, Inc. to found monuments and/or coordinate positions set or determined by Mr. Crook. It is believed these monuments were set at the best available evidence of the corner location. Contact to Mr. Crook can be made at:

Box 68
Readstown, WI 54652

TEL: 608-629-5429

T. 4 N.-R. 4 W
4th Principal Meridian
Corner _____



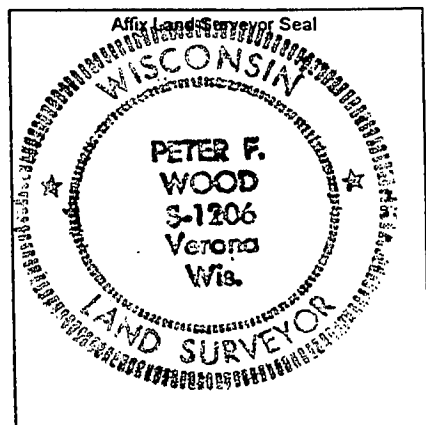
Certification I, PETER F. WOOD

(type or print name) certify that the corner location shown on this record was determined by me or under my direction and control and that this U.S. Public Land Survey Monument Record is correct and complete to the best of my knowledge and belief, in accordance with Chapter A-E 7.08 of the Wisconsin Administrative Code.

Section Control Data Sheets have been filed in the County Surveyor's office, showing final measurements by direction and distance between all remonumented corners. Section Control Information is referenced by the following:

Date <u>11-30-99</u>	Project ID <u>5215-02-21</u>	Sheet(s)
-------------------------	---------------------------------	----------

X *Peter F. Wood* 5-1206 11-30-99
(Registered Land Surveyor Signature and Number) (Date)

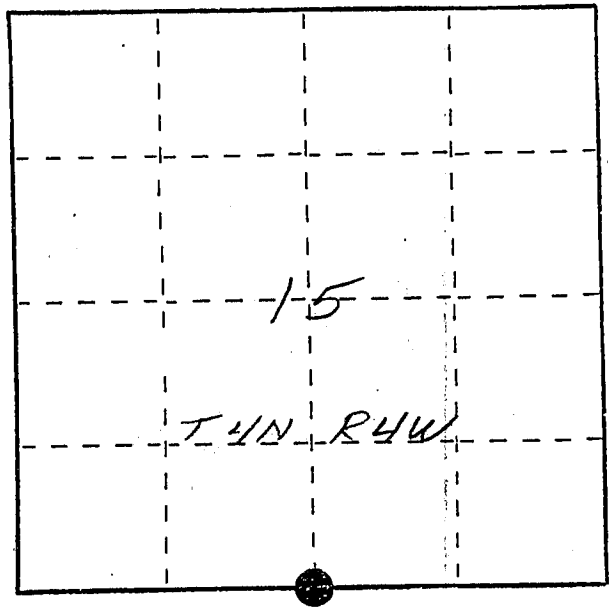
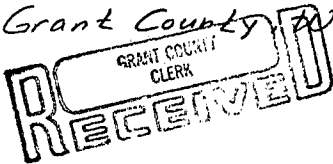


U. S. PUBLIC LAND SURVEY MONUMENT RECORD

INSTRUCTIONS: This record shall show the location of the corner and shall include all of the following nine elements (a through i).

- (a) Identify the corner by reference to the U.S. public land survey system.
 ● = Corner monument restored.

South 1/4 corner section 15
 T4N R4W of the
 4th P.M.
 Town of Beetown
 Grant County Wisconsin



MAR 2, 1988

- (b) Describe any record evidence, monument evidence, occupational evidence, testimonial evidence or any other material evidence you considered, and whether the monument was found or placed.

Monument set halfway between and on line with re-established SW cor. 15 and ancient fence corner at SE corner section 15. Location falls on line with fence and ditch line to the north. Location also agrees fairly well with 1949 hwy. R/W plat. Corner falls approximately 300' so. of and 738' East of intersection of S.T.H. 35 and Porter-Bridge Road. Recorded as 320' and 740' respectively. Corner also falls about 100' south of the E of S.T.H 35

- (c) In the plan view drawing below, provide reference ties to at least 4 witness monuments, or, if the location is within a municipality, to at least 2 witness monuments. (Witness monuments shall be made of concrete, natural stone, iron or other equally durable material, ~~except~~ ~~wood~~.) Describe witness monuments.

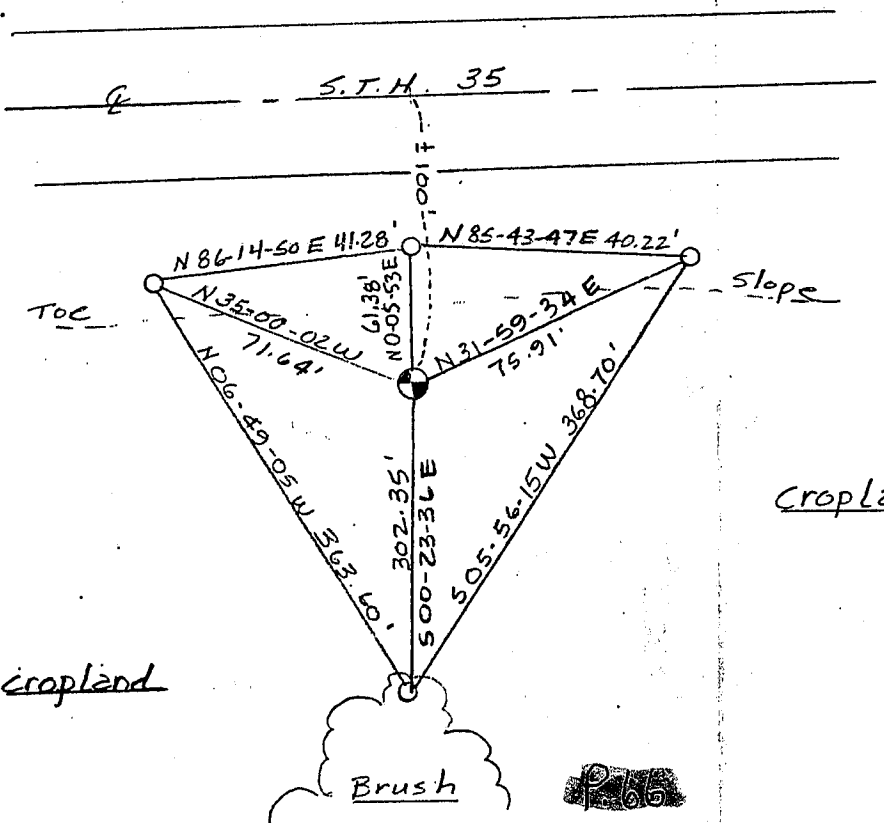
as shown on the plat.

- (d) Show a plan view drawing depicting the relevant monuments and reference ties which is sufficient in detail to enable accurate relocation of the corner monument if the corner monument is disturbed. Indicate north.

No Scale
 Bearings - Wis. Grid

● Berntsen A-1 mon.
 set 24" below ground

○ Ref. mon. - 3/4" x 24"
 rebar w/cap.

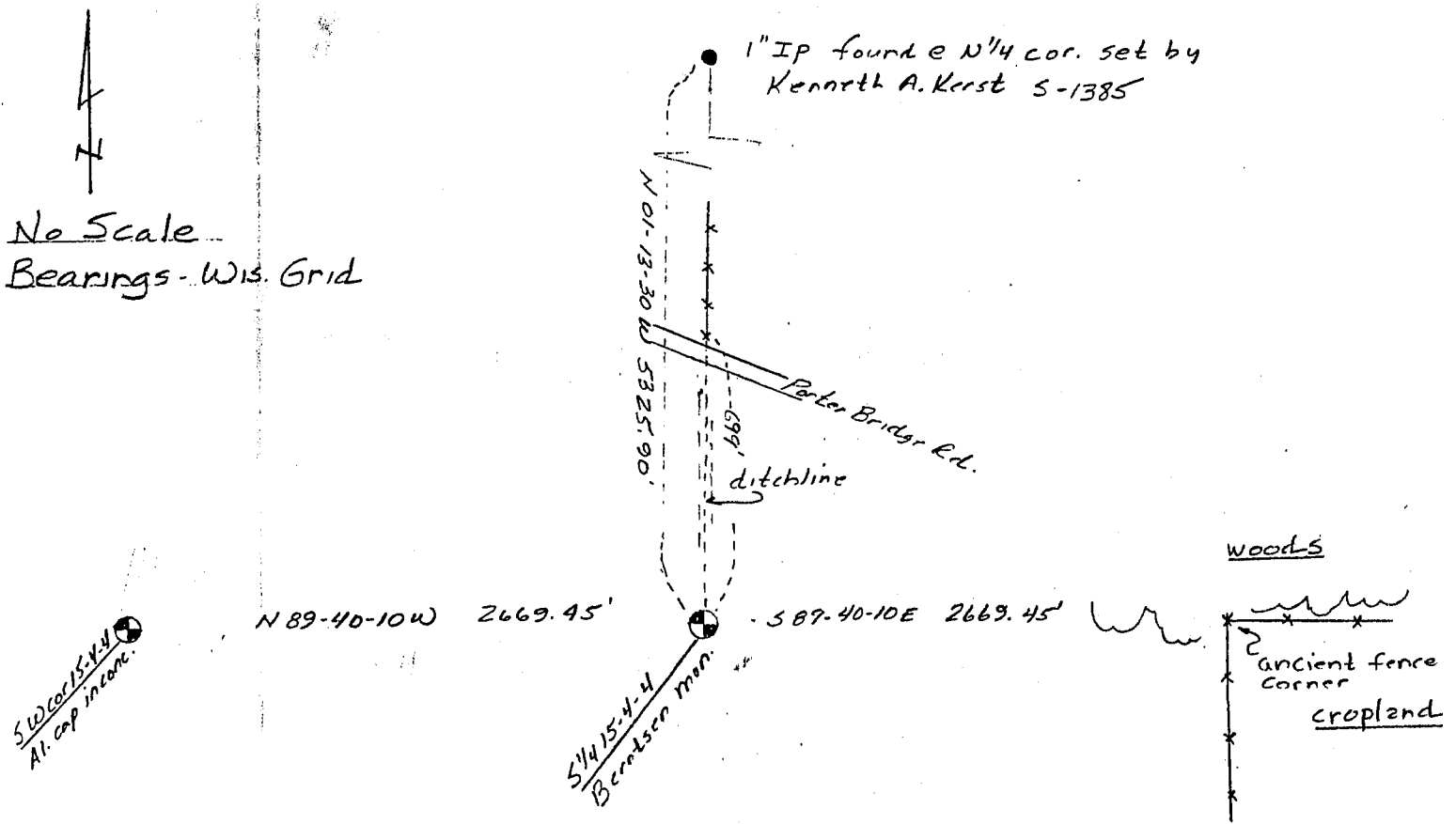


Describe any material discrepancy between the location of the corner as restored or reestablished and the location of that corner as previously restored or reestablished by distance and direction. Show the discrepancy on the plan view drawing under (d), above. Show the distances between the corner as previously restored or reestablished and (1) the corner as restored or reestablished, and (2) to at least 2 of the witness monuments shown on the drawing in (d), above.

(f) Was the corner restored through acceptance of (1) an obliterated evidence location, or, (2) a found perpetuated location?

(g&h) Was the corner reestablished through lost corner proportionate methods? If so, show the method, including the directions and distances to other public land survey corners used as evidence or used for proportioning in determining the corner location?

Yes. Corner was set halfway between and on line with reestablished SW cor. and ancient fence corner to the east.



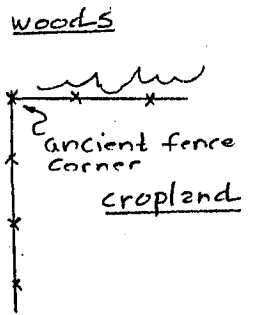
No Scale
Bearings - Wis. Grid

SW cor. 15.4.4
Al. cap in conc.

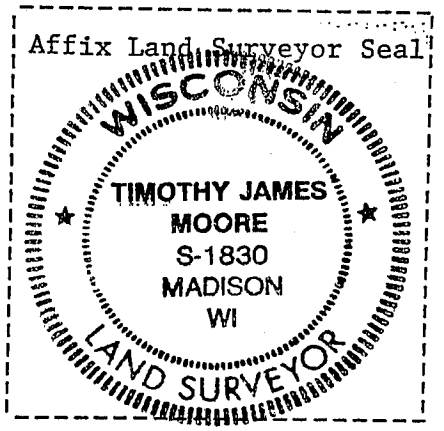
N 89-40-10W 2669.45'

S 1/4 15.4.4
Bemsen Mon.

S 87-40-10E 2669.45'



(i) I, Timothy J. Moore
(type or print name) certify that the corner location shown on this record was determined by me or under my direction and control and that this U.S. Public Land Survey Monument Record is correct and complete to the best of my knowledge and belief.



Timothy J. Moore Signature
2-26-88 Date