

GRANT COUNTY U.S. PUBLIC LAND SURVEY MONUMENT RECORD

INSTRUCTIONS: THIS RECORD SHALL SHOW THE LOCATION OF THE CORNER AND SHALL INCLUDE ALL OF THE FOLLOWING ELEMENTS (A THROUGH I).

(A) IDENTIFY THE CORNER AS REFERENCED TO THE U.S. PUBLIC LAND SURVEY SYSTEM

■ = CORNER MONUMENT RESTORED

WITNESSES TO CORNER LOCATION:

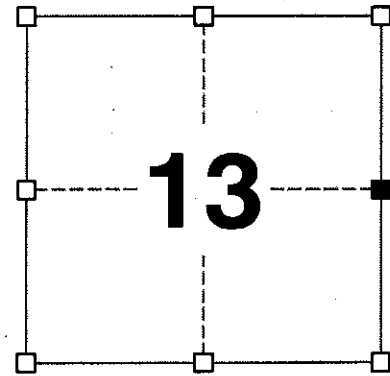
JAY P. ADAMS
TYLER D. ATKINSON

GEOGRAPHIC COORDINATES,
NAD 83 (2011) ADJUSTMENT:

LATITUDE: 42° 49' 17.39660"
LONGITUDE: 90° 46' 57.94549"

WISCONSIN COORDINATE REFERENCE SYSTEM (WISCRS),
GRANT COUNTY, NAD 83 (2011) ADJUSTMENT:

NORTHING: 513,992.55
EASTING: 799,624.87



SECTION 13
TOWNSHIP 4 NORTH, RANGE 4 WEST
TOWN OF BEETOWN

(B) DESCRIBE ANY RECORD EVIDENCE, MONUMENT EVIDENCE, OCCUPATIONAL EVIDENCE, TESTIMONIAL EVIDENCE OR ANY OTHER MATERIAL EVIDENCE YOU CONSIDERED, AND WHETHER THE MONUMENT WAS FOUND OR PLACED.

I COULD FIND NO MONUMENTS OR BEARING TREES FROM THE ORIGINAL GOVERNMENT SURVEY OR THE HISTORIC COUNTY SURVEYORS' SUBSEQUENT RESURVEYS. I RECOVERED THE 1" REBAR AND ALUMINUM CAP REFERENCED BY AUSTIN. THE LOCATION OF THIS CORNER ALONG WITH THE WEST QUARTER CORNER OF SECTION 18, T4N, R3W DO NOT COINCIDE WITH OCCUPATIONAL EVIDENCE. EAST-WEST OCCUPATIONAL EVIDENCE LOCATED NORTH, SOUTH AND WEST OF THIS CORNER WAS USED TO REESTABLISH THIS CORNER IN A NORTH-SOUTH FENCE. I REMONUMENTED THIS CORNER WITH A 2" x 30" STAINLESS STEEL PIPE WITH A 4" GRANT COUNTY BRASS CAP. AUSTIN'S MONUMENT WAS LEFT IN PLACE BUT I REMOVED THE ALUMINUM CAP FROM IT.

(C) IN THE PLAN VIEW DRAWING BELOW, PROVIDE REFERENCE TIES TO AT LEAST 4 WITNESS MONUMENTS. WITNESS MONUMENTS SHALL BE MADE OF CONCRETE, NATURAL STONE, IRON, BEARING TREES OR ANY OTHER EQUALLY DURABLE MATERIAL. DEPICT THE RELEVANT MONUMENTS AND REFERENCE TIES WITH SUFFICIENT DETAIL TO ENABLE ACCURATE RELOCATION OF THE CORNER IF THE CORNER MONUMENT IS DISTURBED.

(D)

S16°58'19"W, 10.21'
10' WEST OF FENCE
S31°14'37"E, 23.52' TO AUSTIN'S
1" REBAR (CAP REMOVED)

E ¼ CORNER
SECTION 13
T4N, R4W

S87°13'04"E, 9.95'
10' EAST OF FENCE
S19°13'43"W, 23.29' TO AUSTIN'S
1" REBAR (CAP REMOVED)

FALLOW

S05°45'12"E, 22.59'
1" REBAR (CAP REMOVED)

FALLOW

S01°00'37"E, 49.50'

W ¼ CORNER
SECTION 18
T4N, R3W

FALLOW

FALLOW



LEGEND:

- SET 2" x 30" STAINLESS STEEL PIPE w/ 4" GRANT COUNTY BRASS CAP
- ⊠ FOUND 1" REBAR (CAP NOW REMOVED)
- 3/4" x 24" IRON ROD SET AS ACCESSORY
- ⊡ "SURVEY MARKER" SIGN 1' +/- EAST OF MONUMENT

(E) DESCRIBE ANY MATERIAL DISCREPANCY BETWEEN THE LOCATION OF THE CORNER AS RESTORED OR REESTABLISHED AND THE LOCATION OF THAT CORNER AS PREVIOUSLY RESTORED OR REESTABLISHED BY DISTANCE AND DIRECTION. SHOW THE DISCREPANCY ON THE PLAN VIEW DRAWING UNDER (D), ABOVE. SHOW THE DISTANCES BETWEEN THE CORNER AS PREVIOUSLY RESTORED OR REESTABLISHED AND (1) THE CORNER AS RESTORED OR REESTABLISHED, AND (2) TO AT LEAST 2 OF THE WITNESS MONUMENTS SHOWN ON THE DRAWING IN (D) ABOVE.

LARRY AUSTIN PREVIOUSLY REMONUMENTED THIS CORNER WITH A 1" x 30" REBAR WITH A GRANT COUNTY ALUMINUM CAP AT WHAT HE DESCRIBES AS AN OCCUPIED LOCATION. I LEFT THAT MONUMENT IN PLACE BUT REMOVED THE ALUMINUM CAP.

(F) WAS THE CORNER RESTORED THROUGH ACCEPTANCE OF (1) AN OBLITERATED EVIDENCE LOCATION, OR (2) A FOUND PERPETUATED LOCATION?

(1) AN OBLITERATED EVIDENCE LOCATION.

(G&H) WAS THE CORNER REESTABLISHED THROUGH LOST CORNER PROPORTIONATE METHODS? IF SO, SHOW THE METHOD, INCLUDING THE DIRECTIONS AND DISTANCES TO OTHER PUBLIC LAND SURVEY CORNERS USED AS EVIDENCE OR USED FOR PROPORTIONING IN DETERMINING THE CORNER LOCATION.

N/A

CORNER HISTORY

THE ORIGINAL GOVERNMENT CORNER WAS ESTABLISHED BY SYLVESTER SIBLEY IN THE SECOND QUARTER OF 1832.

IN A SURVEY DATED 10 DECEMBER 1842, FREEMAN WAS AT THE CORNER.

IN A SURVEY DATED 22 OCTOBER 1850, GEO. STUNTZ WAS AT THE CORNER.

IN A SURVEY DATED 23 DECEMBER 1875, JOEL BARBER WAS AT THE CORNER.

IN A TIE SHEET DATED 11 APRIL 2001, LARRY AUSTIN SET A #8 x 30" REBAR WITH GRANT COUNTY ALUMINUM CAP AT THE CORNER.

LARRY AUSTIN HAS USED THIS MONUMENT IN SUBSEQUENT PLATS OF SURVEY.

AFFIX LAND SURVEYOR SEAL

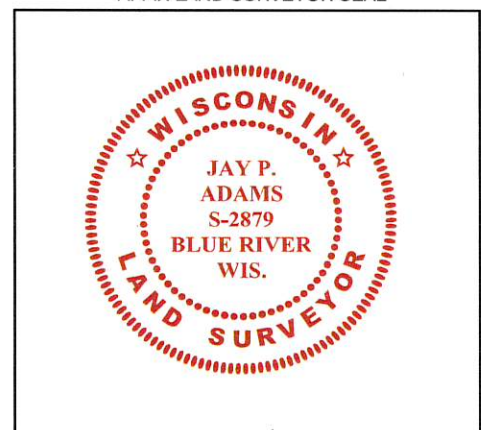
(I) I, JAY P. ADAMS, P.L.S. - 2879, CERTIFY THAT THE CORNER LOCATION SHOWN ON THIS RECORD WAS DETERMINED BY ME OR UNDER MY DIRECTION AND CONTROL AND THAT THIS U.S. PUBLIC LAND SURVEY MONUMENT RECORD IS CORRECT AND COMPLETE TO THE BEST OF MY KNOWLEDGE AND BELIEF.



29 NOVEMBER 2018

SIGNATURE

DATE



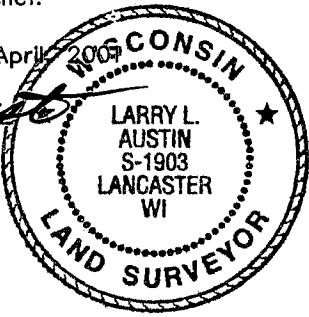
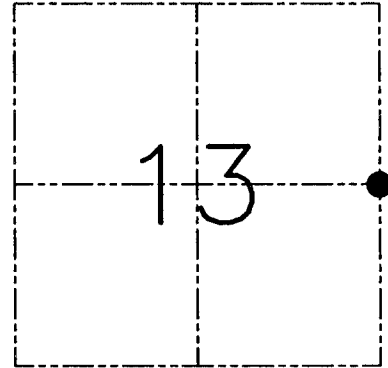
U.S. PUBLIC LAND SURVEY MONUMENT RECORD - GRANT COUNTY, WI
Section 13, Town 4 North Range 4 West, Town of Beetown

CERTIFICATE

I, Larry L. Austin, do hereby certify that the corner location on this record was determined by me and/or under my direct supervision and that this U.S. public land survey monument record is correct and complete to the best of my knowledge and belief.

Dated this 11th day of April 2009

Larry L. Austin
 Larry L. Austin S-1903

● = CORNER LOCATION

HISTORY OF CORNER ESTABLISHMENT

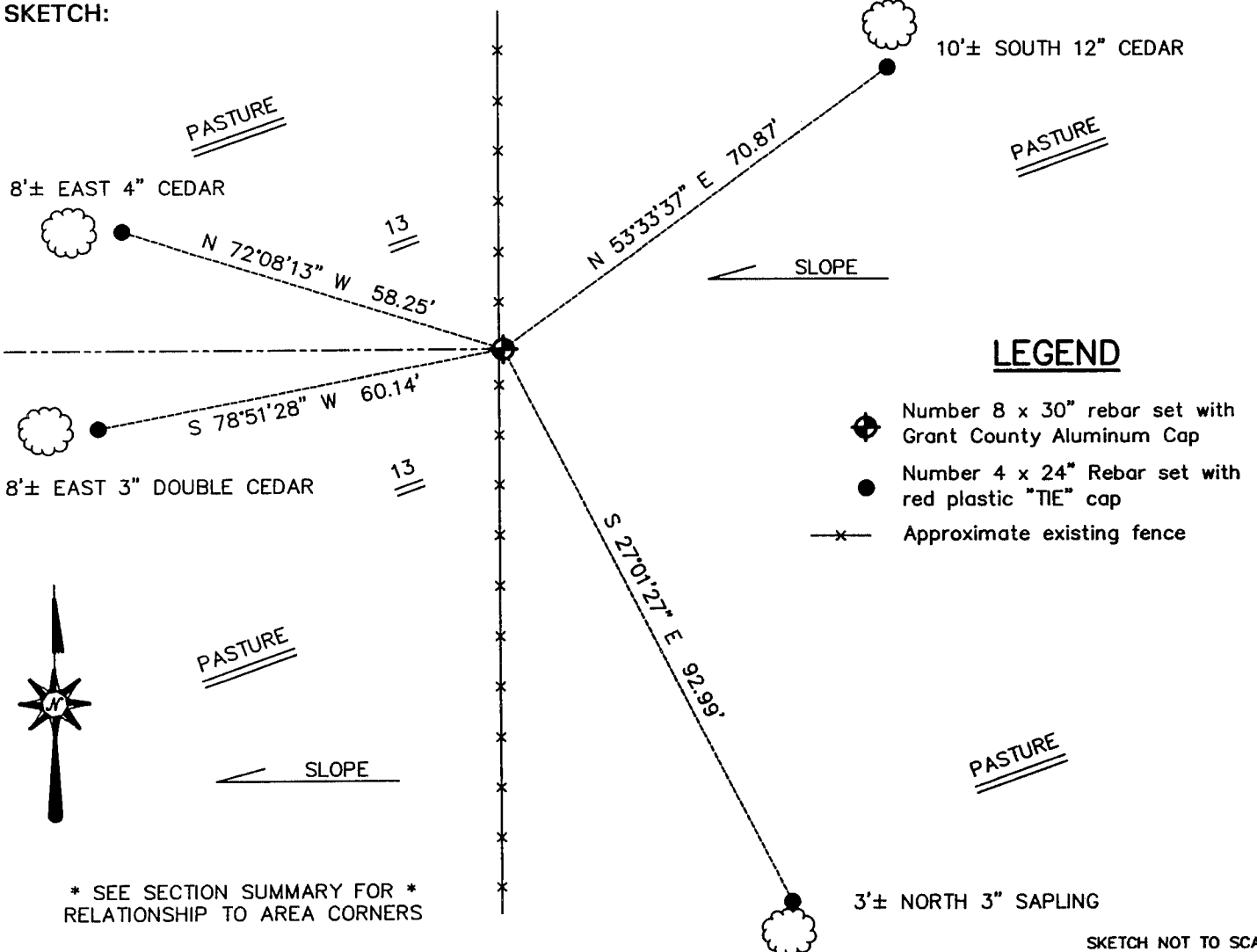
Corner was originally set in 1832 by Sibley.
 In 1850 Geo Stuntz tied to the corner. In 1875 Barber tied to the corner.

DESCRIPTION OF CORNER EVIDENCE FOUND

I reset the corner at an occupied location. This location fit other occupied and monumented corners in the area. Verified this location using EDM & GPS methods.

DESCRIPTION OF CORNER AND WITNESS MONUMENTS, references and accessories used to perpetuate the original or re-established location of this corner. Witnesses to the corner location Bobby Sedgwick & Shelby Blindert & Tim Fauver.

SKETCH:



LEGEND

- ◆ Number 8 x 30" rebar set with Grant County Aluminum Cap
- Number 4 x 24" Rebar set with red plastic "TIE" cap
- x- Approximate existing fence

* SEE SECTION SUMMARY FOR *
 RELATIONSHIP TO AREA CORNERS

SKETCH NOT TO SCALE

AUSTIN ENGINEERING, LLC
 4211 HWY 81 EAST, LANCASTER, WI 53813
 PHONE 608-723-6363 FAX 608-723-6702

FIELDBOOK: SDR33, 2101
 G: \T4NR4W\13
 C: \SWA\TIE\T4NR4W\60
 CREW: BS-SB-SA-TF

DRAWN BY: SW AUSTIN
 APPROVED: LL AUSTIN

CORNER NUMBER 60