

44058

U.S. PUBLIC LAND SURVEY MONUMENT RECORD - GRANT COUNTY, WI

Section 14, Town 4 North Range 4 West, Town of Beetown (a)

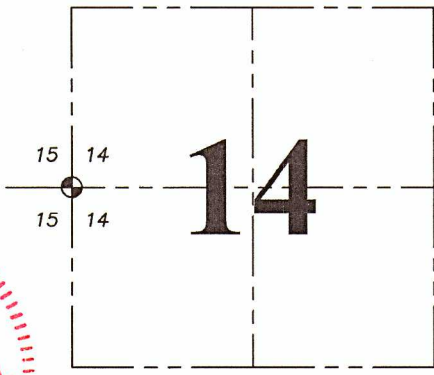
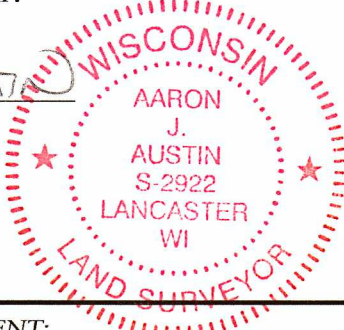
NOTE: This form is intended and designed to fulfill all requirements of the Wisconsin Administrative Code Chapter A-E 7.08, U.S. Public Land Survey Monument Record (3) (a) (b) (c) (d) (e) (f) (g) (h) (i).

CERTIFICATE: (i)

I, Aaron J. Austin, Wisconsin Professional Land Surveyor, do hereby certify that the corner location on this record was determined by me and/or under my direct supervision and that this U.S. Public Land Survey Monument Record is correct and complete to the best of my knowledge and belief.

Dated this 2nd day of June, 2021.

Aaron J. Austin
Aaron J. Austin, S-2922



⊕ = CORNER LOCATION

Grant County Coordinates:
NAD 83 (2011)
Northing: 514,076.76
Easting: 788,950.26

HISTORY OF CORNER ESTABLISHMENT:

Original corner was set in 1833 by Robert Clark.
In 1991 Woodman tied to the corner and stated he set a 3" Pipe.
Larry Austin found a 2" Iron Pipe and prepared a Survey Monument Record dated 5/16/2001.

DESCRIPTION OF CORNER EVIDENCE FOUND: (b) (f) (g) (h)

I set 3/4" x 18" Rebar from two witness corners based upon Larry's Survey Monument Record. I set two witness after I verified the Monument's location with G.P.S. and E.D.M. methods.

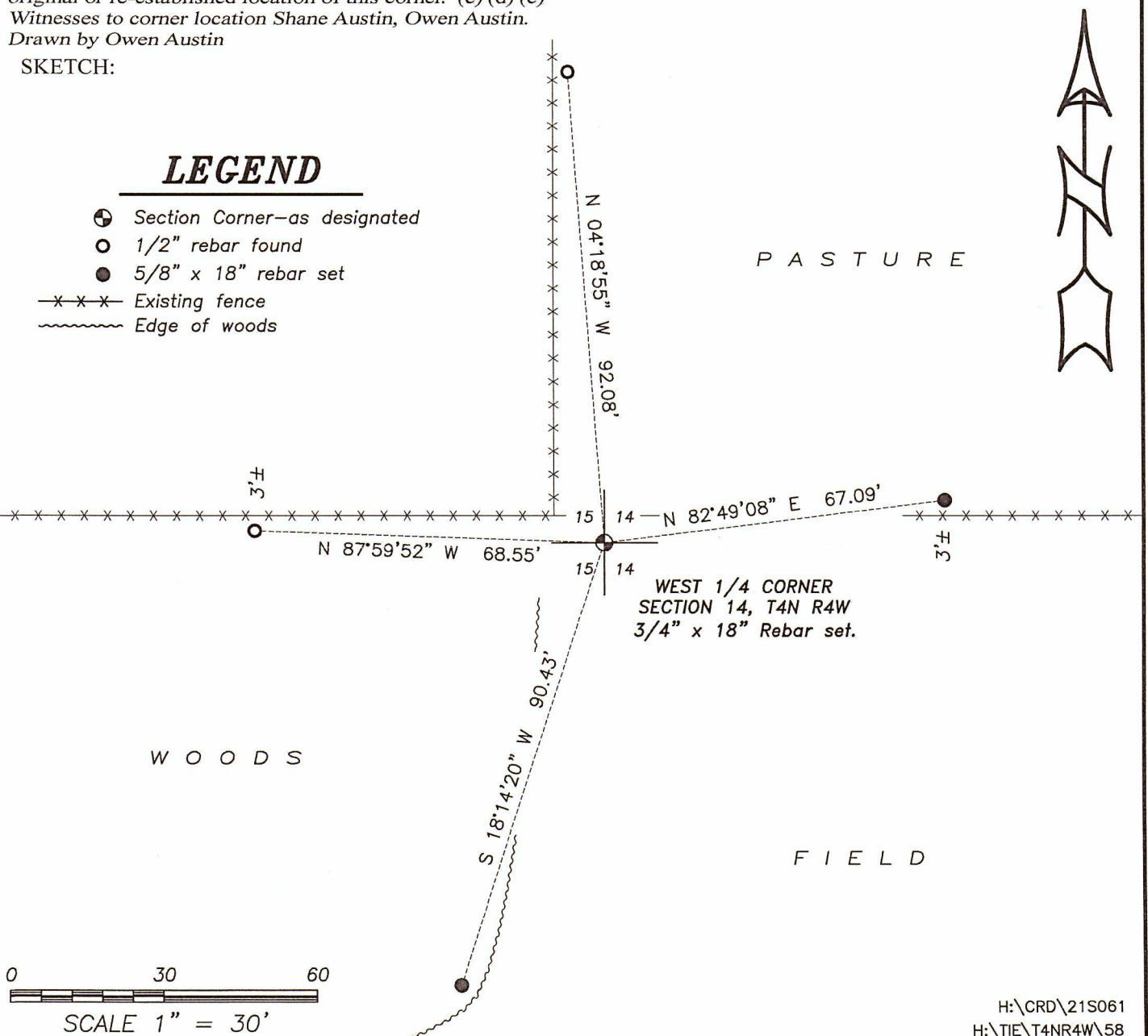
DESCRIPTION OF CORNER AND WITNESS MONUMENTS, references and accessories used to perpetuate the original or re-established location of this corner. (c) (d) (e)

Witnesses to corner location Shane Austin, Owen Austin.
Drawn by Owen Austin

SKETCH:

LEGEND

- ⊕ Section Corner—as designated
- 1/2" rebar found
- 5/8" x 18" rebar set
- x-x-x- Existing fence
- ~~~~~ Edge of woods



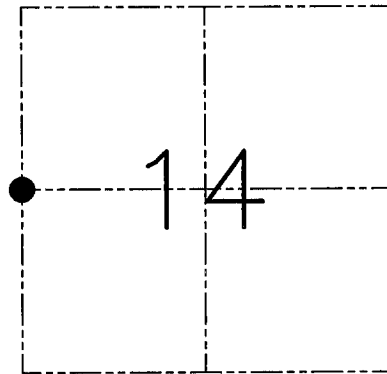
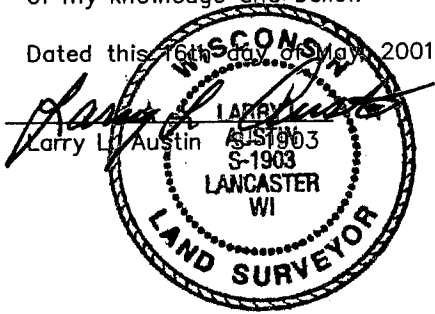
U.S. PUBLIC LAND SURVEY MONUMENT RECORD - GRANT COUNTY, WI

Section 14, Town 4 North Range 4 West, Town of Beetown

CERTIFICATE

I, Larry L. Austin, do hereby certify that the corner location on this record was determined by me and/or under my direct supervision and that this U.S. public land survey monument record is correct and complete to the best of my knowledge and belief.

Dated this 16th day of May, 2001



● = CORNER LOCATION

HISTORY OF CORNER ESTABLISHMENT

Corner was originally set in 1833 by Robert Clark. In 1844 Wiltse tied to the corner. In 1991 Woodman tied to the corner and stated he set a 3" iron pipe.

DESCRIPTION OF CORNER EVIDENCE FOUND

I found an existing 2" iron pipe and accepted it's location after an EDM & GPS traverse of the area.

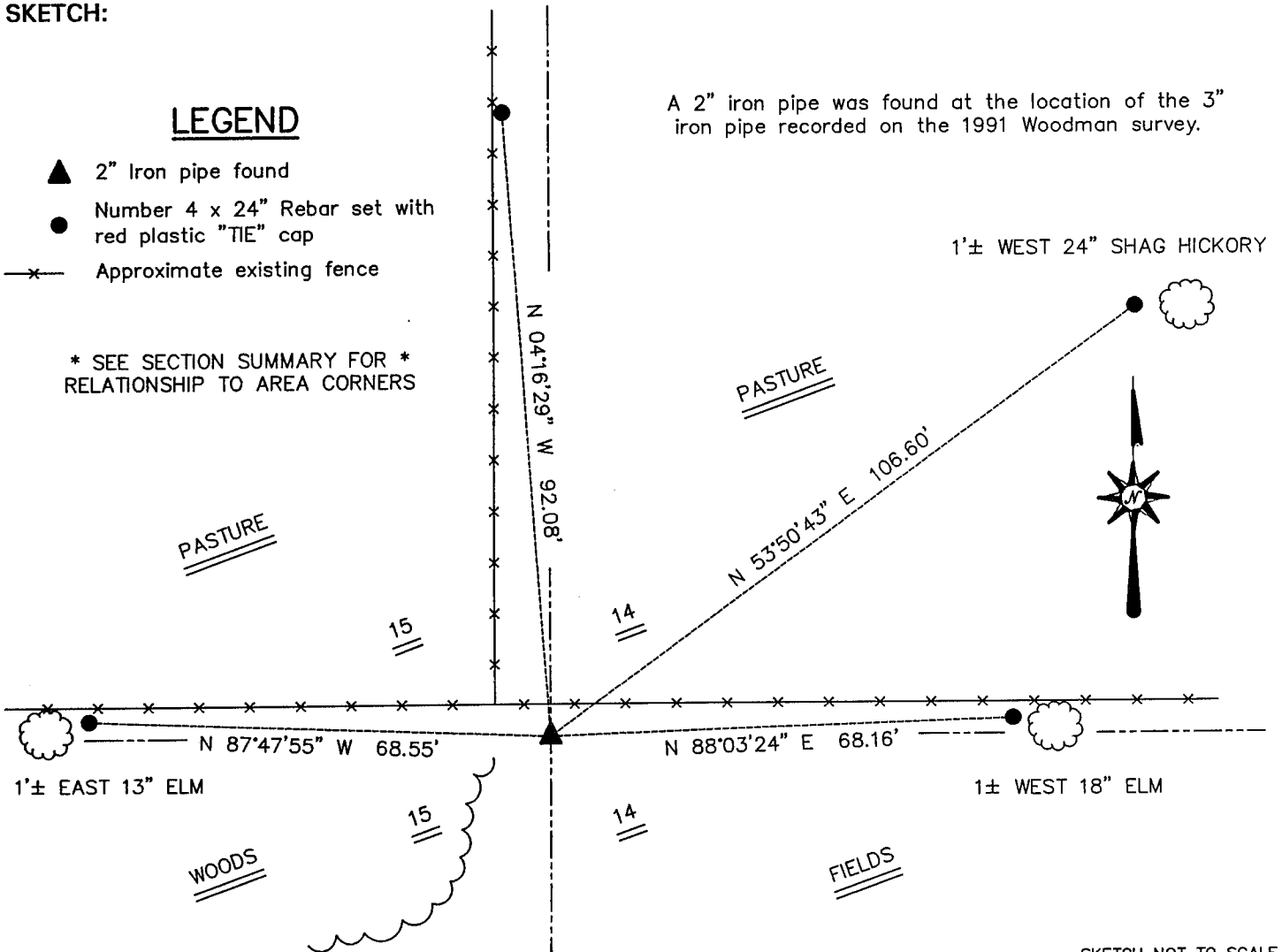
DESCRIPTION OF CORNER AND WITNESS MONUMENTS, references and accessories used to perpetuate the original or re-established location of this corner. Witnesses to the corner location Bobby Sedgwick & Shane Austin & Cody Austin

SKETCH:

LEGEND

- ▲ 2" Iron pipe found
- Number 4 x 24" Rebar set with red plastic "TIE" cap
- x— Approximate existing fence

* SEE SECTION SUMMARY FOR *
RELATIONSHIP TO AREA CORNERS



A 2" iron pipe was found at the location of the 3" iron pipe recorded on the 1991 Woodman survey.

SKETCH NOT TO SCALE

AUSTIN ENGINEERING, LLC

4211 HWY 81 EAST, LANCASTER, WI 53813
PHONE 608-723-6363 FAX 608-723-6702

FIELDBOOK: SDR33, 2101
G: \T4NR4W\22
C: \SWA\TIE\T4NR4W\58
CREW: BS-SB-SA-TF

DRAWN BY: SW AUSTIN
APPROVED: LL AUSTIN

CORNER NUMBER 58