

RECEIVED

By Land Information Office at 12:44 pm, Feb 26, 2020

44057

U.S. PUBLIC LAND SURVEY MONUMENT RECORD - GRANT COUNTY, WI

Section 16, Town 4 North Range 4 West, Town of Beetown (a)

NOTE: This form is intended and designed to fulfill all requirements of the Wisconsin Administrative Code Chapter A-E 7.08, U.S. Public Land Survey Monument Record (3) (a) (b) (c) (d) (e) (f) (g) (h) (i).

CERTIFICATE: (i)

I, Aaron J. Austin, Wisconsin Professional Land Surveyor, do hereby certify that the corner location on this record was determined by me and/or under my direct supervision and that this U.S. Public Land Survey Monument Record is correct and complete to the best of my knowledge and belief.

Dated this 16th day of November, 2019.

Aaron J. Austin
Aaron J. Austin, S-2922



⊕ = CORNER LOCATION

Grant County Coordinates:
NAD 83 (2011)
Northing: 514,053.22
Easting: 783,592.88

HISTORY OF CORNER ESTABLISHMENT:

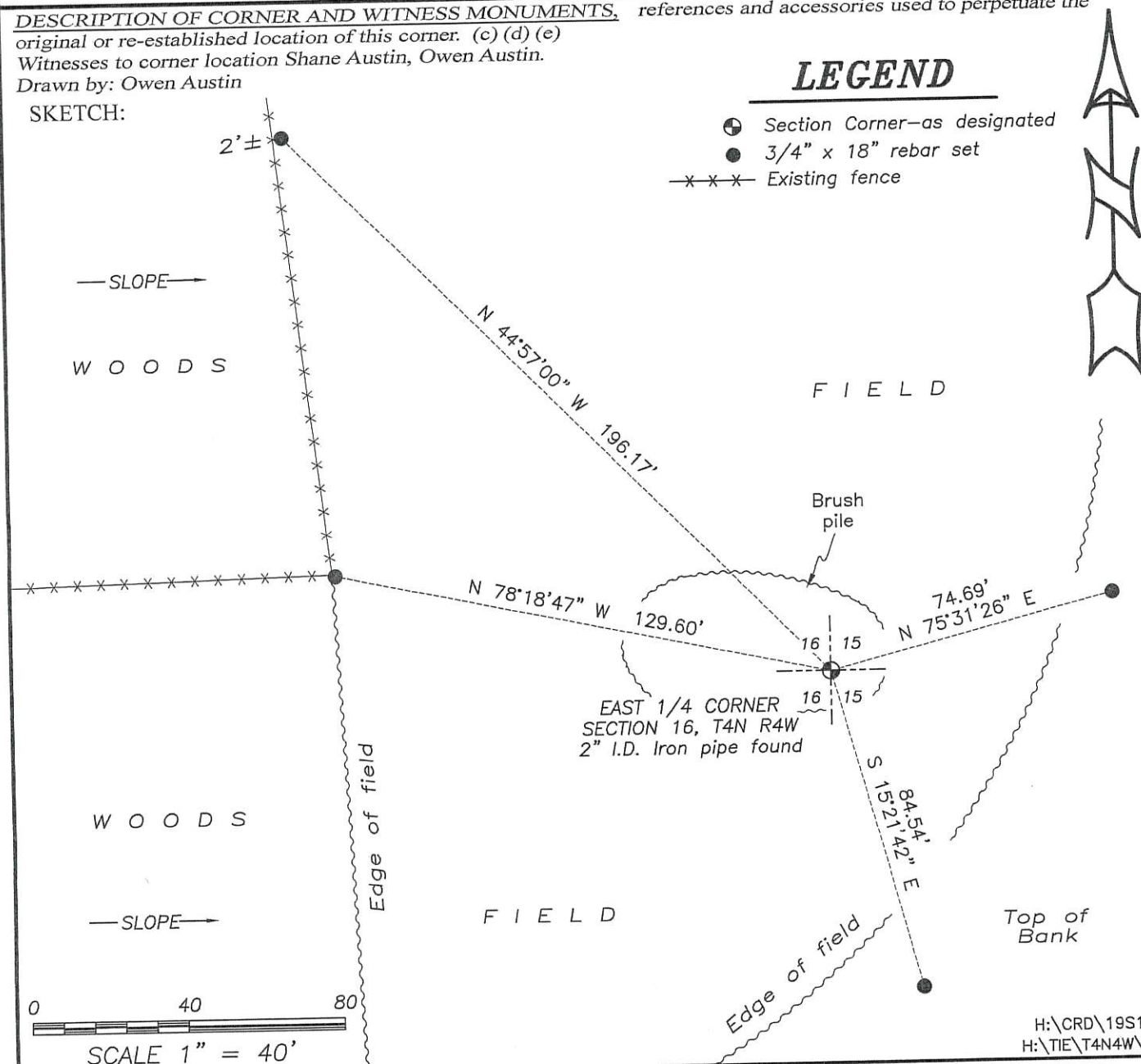
Original corner was set in 1833 by Robert Clark.
Timothy Moore set a Bernsten Monument at the corner and prepared a Survey Monument Record dated 2/23/1988.
William Woodman set a 3" Iron Pipe at the corner dated on a survey dated 7/21/1991.

DESCRIPTION OF CORNER EVIDENCE FOUND: (b) (f) (g) (h)

In 2011, I accepted Woodman's location after measuring to other Section corners and interior 40 corners on a survey filed in Book 29, Page 27. I accepted this location after subdividing Section 16. I set four new witness corners after I verified the Monument's location with G.P.S. and E.D.M. methods.

DESCRIPTION OF CORNER AND WITNESS MONUMENTS: references and accessories used to perpetuate the original or re-established location of this corner. (c) (d) (e)
Witnesses to corner location Shane Austin, Owen Austin.
Drawn by: Owen Austin

SKETCH:



U. S. PUBLIC LAND SURVEY MONUMENT RECORD

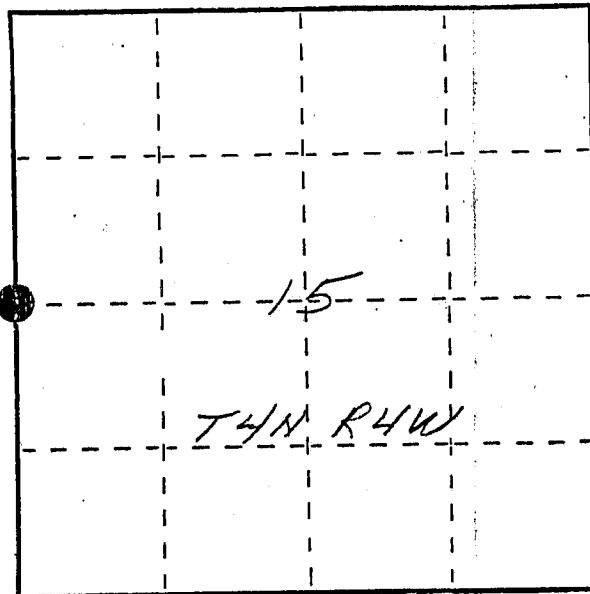
INSTRUCTIONS: This record shall show the location of the corner and shall include all of the following nine elements (a through i).

- (a) Identify the corner by reference to the U.S. public land survey system.
 ● = Corner monument restored.

W^{1/4} corner section 15
 T4N R4W of the
 4th P.M.
 Town of Beetown
 Grant County, Wisconsin

RECEIVED

MAR 2, 1988



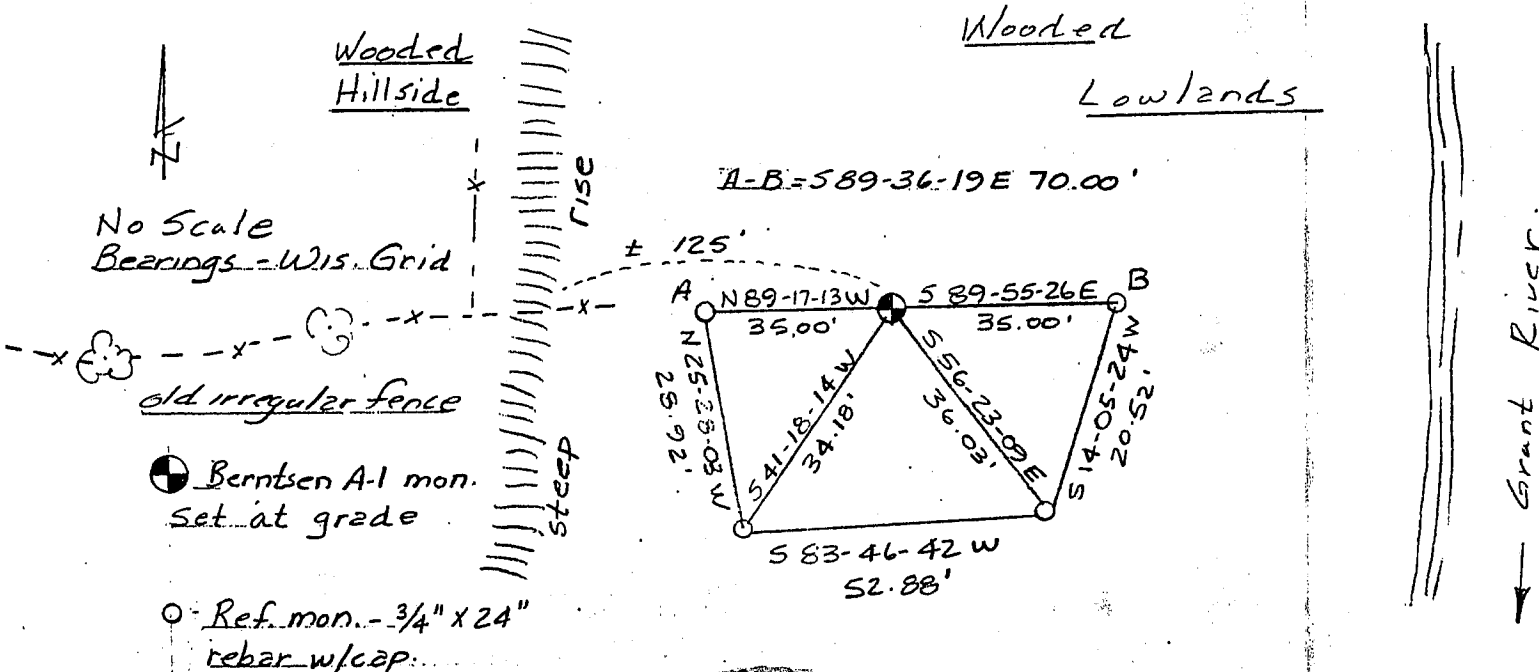
- (b) Describe any record evidence, monument evidence, occupational evidence, testimonial evidence or any other material evidence you considered, and whether the monument was found or placed.

Monument set halfway between and on line with reestablished SW and NW corners of said section 15. No monument or record evidence could be found. Fence from west is not straight and could not be used to set corner. Dick Weidenbeck (landowner) walked area with me and told me tornado destroyed any fence line that may have helped in reestablishing section corner. The area

- (c) In the plan view drawing below, provide reference ties to at least 4 witness monuments, or, if the location is within a municipality, to at least 2 witness monuments. (Witness monuments shall be made of concrete, natural stone, iron or other equally durable material, ~~except wood.~~) Describe witness monuments.

Goods regularly.

- (d) Show a plan view drawing depicting the relevant monuments and reference ties which is sufficient in detail to enable accurate relocation of the corner monument if the corner monument is disturbed. Indicate north.

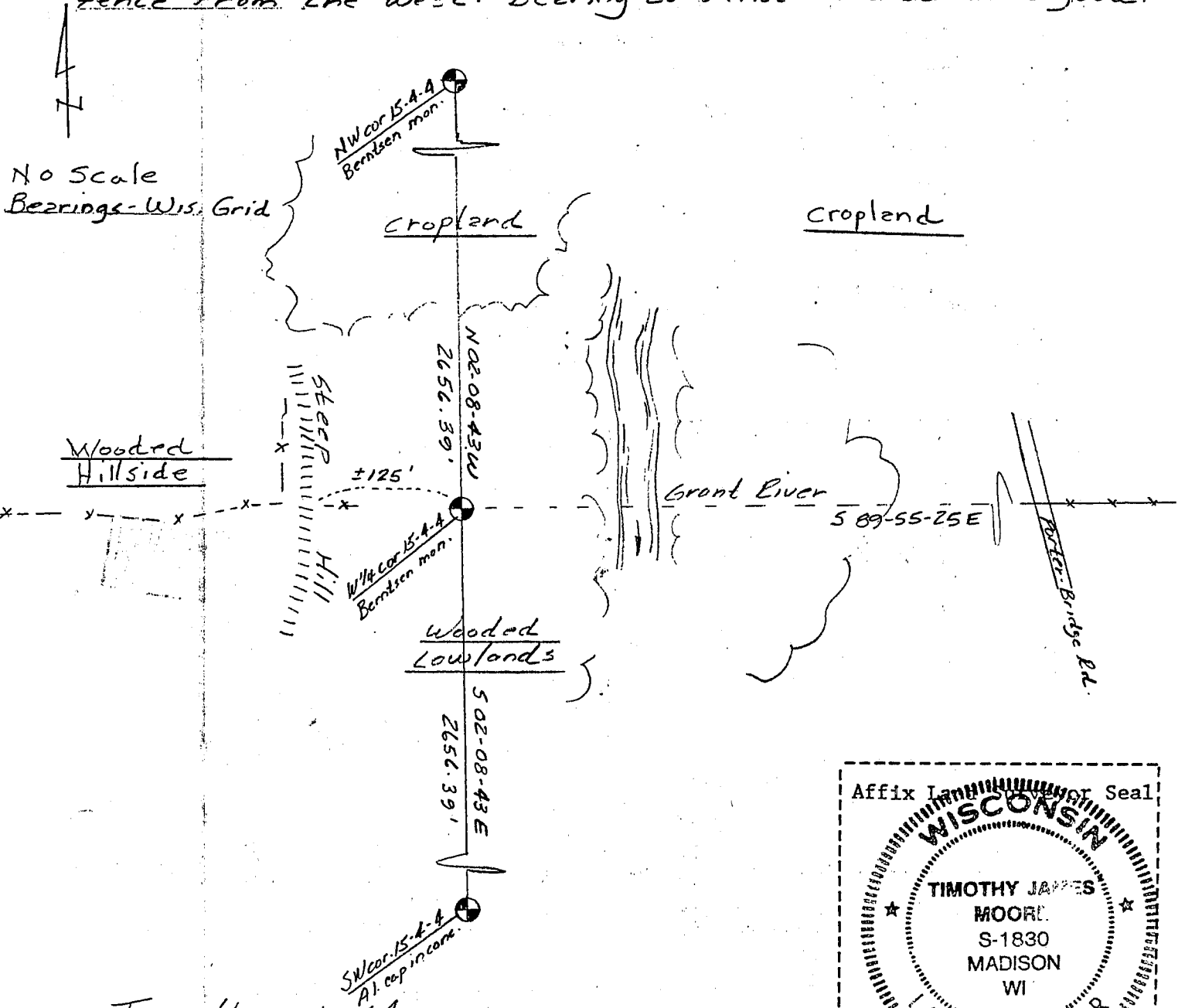


Describe any material discrepancy between the location of the corner as restored or reestablished and the location of that corner as previously restored or reestablished by distance and direction. Show the discrepancy on the plan view drawing under (d), above. Show the distances between the corner as previously restored or reestablished and (1) the corner as restored or reestablished, and (2) to at least 2 of the witness monuments shown on the drawing in (d), above.

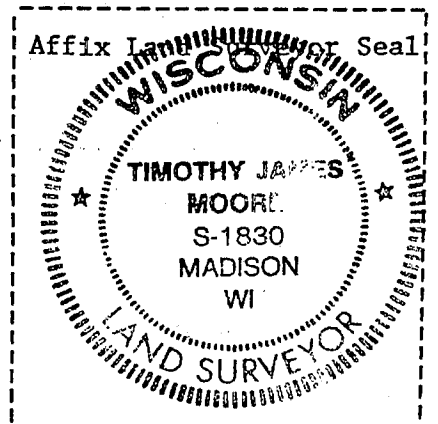
(f) Was the corner restored through acceptance of (1) an obliterated evidence location, or, (2) a found perpetuated location?

(g&h) Was the corner reestablished through lost corner proportionate methods? If so, show the method, including the directions and distances to other public land survey corners used as evidence or used for proportioning in determining the corner location?

Yes. Monument set halfway between § on line with reestablished SW and NW corners of said section 15. Location does not disagree terribly with crooked fence from the west. Bearing to fence to east looks good.



(i) I, Timothy J. Moore
 (type or print name) certify that the corner location shown on this record was determined by me or under my direction and control and that this U.S. Public Land Survey Monument Record is correct and complete to the best of my knowledge and belief.



Timothy J. Moore Date 2-23-88
 Signature Date