

RECEIVED

44056

By Land Information Office at 12:44 pm, Feb 26, 2020

U.S. PUBLIC LAND SURVEY MONUMENT RECORD - GRANT COUNTY, WI

Section 16, Town 4 North Range 4 West, Town of Beetown (a)

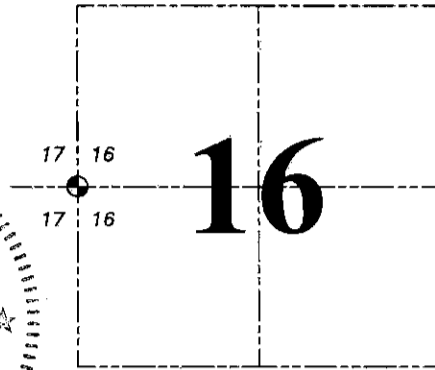
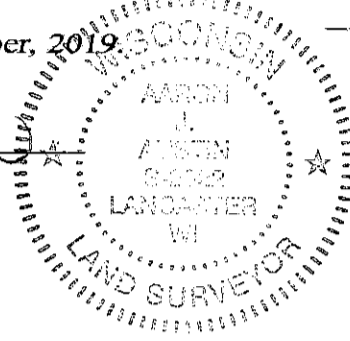
NOTE: This form is intended and designed to fulfill all requirements of the Wisconsin Administrative Code Chapter A-E 7.08, U.S. Public Land Survey Monument Record (3) (a) (b) (c) (d) (e) (f) (g) (h) (i).

CERTIFICATE: (i)

I, Aaron J. Austin, Wisconsin Professional Land Surveyor, do hereby certify that the corner location on this record was determined by me and/or under my direct supervision and that this U.S. Public Land Survey Monument Record is correct and complete to the best of my knowledge and belief.

Dated this 16th day of November, 2019.

Aaron J. Austin, S-2922



⊙ = CORNER LOCATION

Grant County Coordinates: NAD 83 (2011) Northing: 514,053.36 Easting: 778,290.07

HISTORY OF CORNER ESTABLISHMENT:

Original corner was set in 1833 by Robert Clark.

DESCRIPTION OF CORNER EVIDENCE FOUND: (b) (f) (g) (h)

After measuring several trees near this corners location, I could not recover any bearing trees that also matched a call to the creek in the original notes. I set a 7/8" rebar equadistant between the Northwest corner and the Southwest corner of the Section and used the existing fenceline as evidence for the Easting location. This location matches existing field evidence in both Sections 16 and 17 better than using the call to the creek which did not coincide with the overall dimension of the West line of Section 16 in the original notes. I set four new witness corners after I verifies the Monument's location with G.P.S. and E.D.M. methods

DESCRIPTION OF CORNER AND WITNESS MONUMENTS, references and accessories used to perpetuate the original or re-established location of this corner. (c) (d) (e)

Witnesses to corner location Shane Austin, Owen Austin. Drawn by: Owen Austin

SKETCH:

