

U.S. PUBLIC LAND SURVEY MONUMENT RECORD - GRANT COUNTY, WI

Section 18, Town 4 North Range 4 West, Town of Beetown (a)

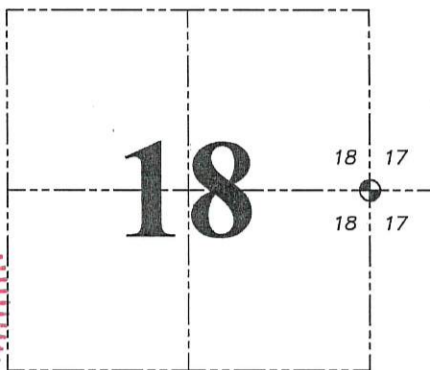
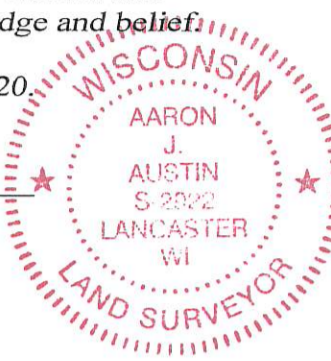
NOTE: This form is intended and designed to fulfill all requirements of the Wisconsin Administrative Code Chapter A-E 7.08, U.S. Public Land Survey Monument Record (3) (a) (b) (c) (d) (e) (f) (g) (h) (i).

CERTIFICATE: (i)

I, Aaron J. Austin, Wisconsin Professional Land Surveyor, do hereby certify that the corner location on this record was determined by me and/or under my direct supervision and that this U.S. Public Land Survey Monument Record is correct and complete to the best of my knowledge and belief.

Dated this 28th day of January, 2020.

Aaron J. Austin
Aaron J. Austin, S-2922



⊕ = CORNER LOCATION

Grant County Coordinates:

NAD 83 (2011)
Northing: 514,146.16
Easting: 772,996.13

HISTORY OF CORNER ESTABLISHMENT:

Original corner was set in 1833 by Robert Clark.
Larry Austin set a 3/4" rebar and prepared a Survey Monument Record dated 10/10/1996.

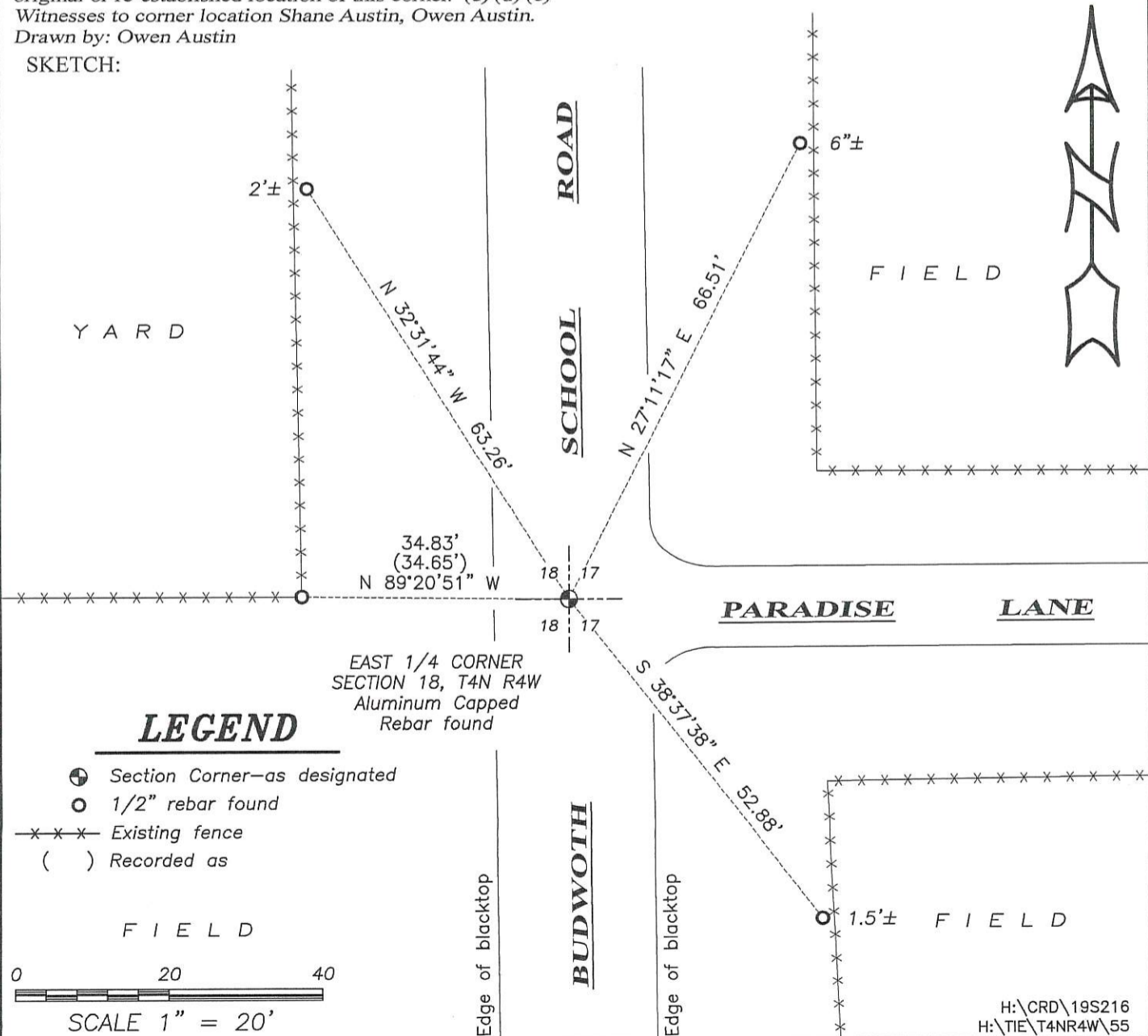
DESCRIPTION OF CORNER EVIDENCE FOUND: (b) (f) (g) (h)

I found an Aluminum Capped 3/4" Rebar that checked to the current witness corners. I found four witness corners after I verified the Monument's location with G.P.S. and E.D.M. methods.

DESCRIPTION OF CORNER AND WITNESS MONUMENTS: references and accessories used to perpetuate the original or re-established location of this corner. (c) (d) (e)

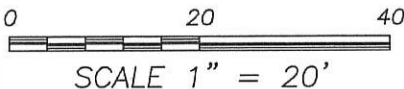
Witnesses to corner location Shane Austin, Owen Austin.
Drawn by: Owen Austin

SKETCH:



LEGEND

- ⊕ Section Corner—as designated
- 1/2" rebar found
- x-x-x- Existing fence
- () Recorded as

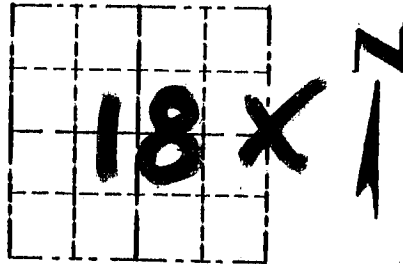


GRANT COUNTY

Survey Monument Record

CORNER NO. 55
 SECTION 18
 TOWN 4N
 RANGE 4W

TYPE OF MONUMENT 3/4" X 24" IRON BAR
 STATE PLANE COORDINATES: N SET
 E _____
 ELEVATION — M.S.L. DATUM: _____
 THETA ANGLE: _____
 FIELD BOOK: 96-16
 PAGE _____

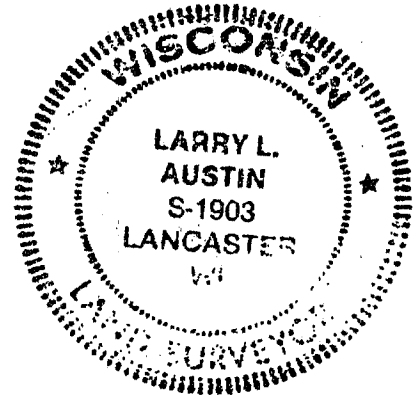


LOCATION
(Indicated by "X")

BASIS FOR MONUMENT LOCATION

(Use reverse side if necessary)

CORNER SET IN 1833 BY CLARK. ORIGINAL MOUND SEAL: IN PRAIRIE WAS UNRECOVERABLE. NO RECORD OF CORNER FOUND SINCE ORIGINAL SURVEYS. CORNER SET AT A OCCUPIED FENCE WEST FOR NORTHING, CENTERLINE OF BUDWORTH SCHOOL ROAD FOR EASTING, VERIFIED ITS LOCATION USING EDM METHODS.



CERTIFIED CORRECT
Larry L. Austin
 Registered Land Surveyor
 DATE: 10-10-96

TIE SKETCH

Show at least three (3) ties and monument

LEGEND

- 3/4" X 24" IRON BAR SET
- 1/2" X 18" IRON BAR SET
- * * * EXISTING FENCE

