

44053

# U.S. PUBLIC LAND SURVEY MONUMENT RECORD - GRANT COUNTY, WI

Section 7, Town 4 North Range 4 West, Town of Beetown (a)

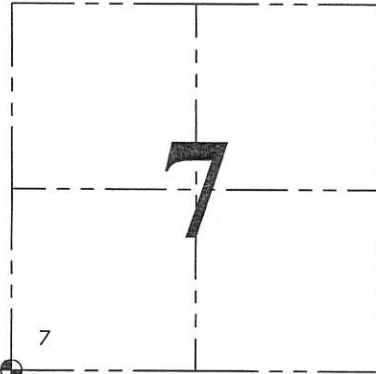
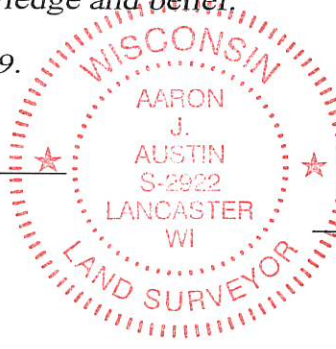
NOTE: This form is intended and designed to fulfill all requirements of the Wisconsin Administrative Code Chapter A-E 7.08, U.S. Public Land Survey Monument Record (3) (a) (b) (c) (d) (e) (f) (g) (h) (i).

CERTIFICATE: (i)

I, Aaron J. Austin, Wisconsin Professional Land Surveyor, do hereby certify that the corner location on this record was determined by me and/or under my direct supervision and that this U.S. Public Land Survey Monument Record is correct and complete to the best of my knowledge and belief.

Dated this 19th day of June, 2019.

*Aaron J. Austin*  
Aaron J. Austin, S-2922



⊕ = CORNER LOCATION

Grant County Coordinates:  
NAD 83 (2011)  
Northing: 516,912.14  
Easting: 767,945.29

HISTORY OF CORNER ESTABLISHMENT:

Original corner was set in 1832 by Sibley.  
Larry Austin set a 3/4" rebar with a Grant County Aluminum Cap and prepared a Survey Monument Record dated 4/6/2001.

DESCRIPTION OF CORNER EVIDENCE FOUND: (b) (f) (g) (h)

I found the 3/4" rebar as set by Larry Austin. I set four new witness corners after I verified the Monument's location with G.P.S. and E.D.M. methods.

DESCRIPTION OF CORNER AND WITNESS MONUMENTS: references and accessories used to perpetuate the original or re-established location of this corner. (c) (d) (e)

Witnesses to corner location Shane Austin, Owen Austin.  
Drawn by: Owen Austin

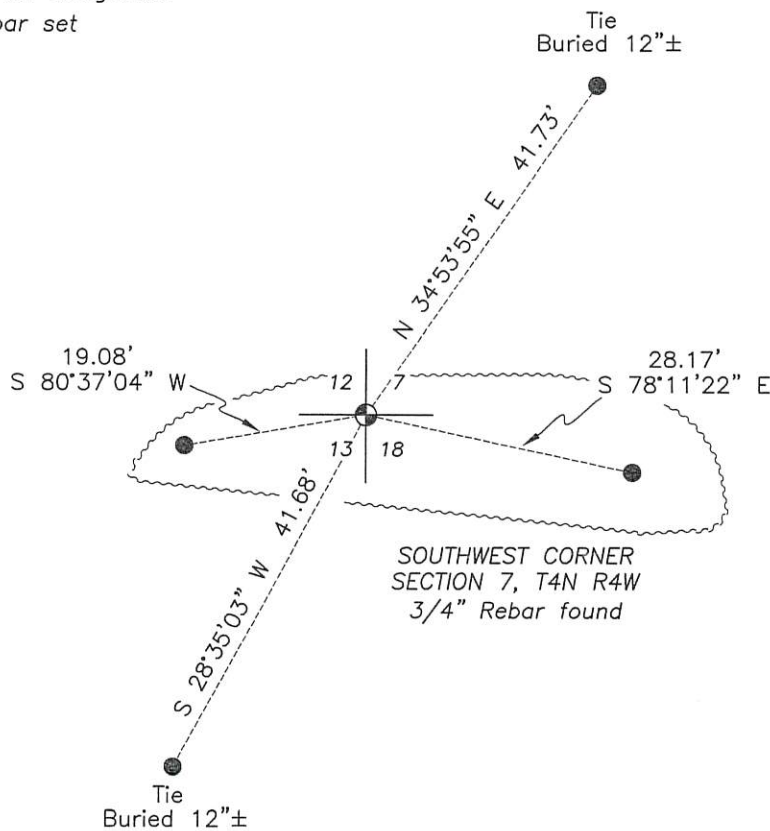
SKETCH:

## LEGEND

- ⊕ Section Corner—as designated
- 3/4" x 18" rebar set
- ~~~~~ Edge of field

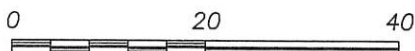
F I E L D

F I E L D



F I E L D

F I E L D



SCALE 1" = 20'

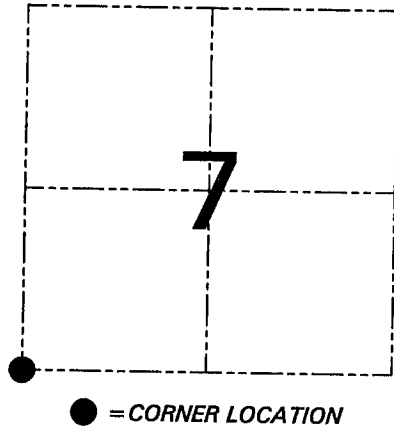
**U.S. PUBLIC LAND SURVEY MONUMENT RECORD - GRANT COUNTY, WI**  
 Section 7, Town 4 North Range 4 West, Town of Beetown

**CERTIFICATE**

I, Larry L. Austin, do hereby certify that the corner location on this record was determined by me and/or under my direct supervision and that this U.S. public land survey monument record is correct and complete to the best of my knowledge and belief.

Dated this 6th day of April, 2001

*Larry L. Austin*  
 Larry L. Austin S-1903



**HISTORY OF CORNER ESTABLISHMENT**

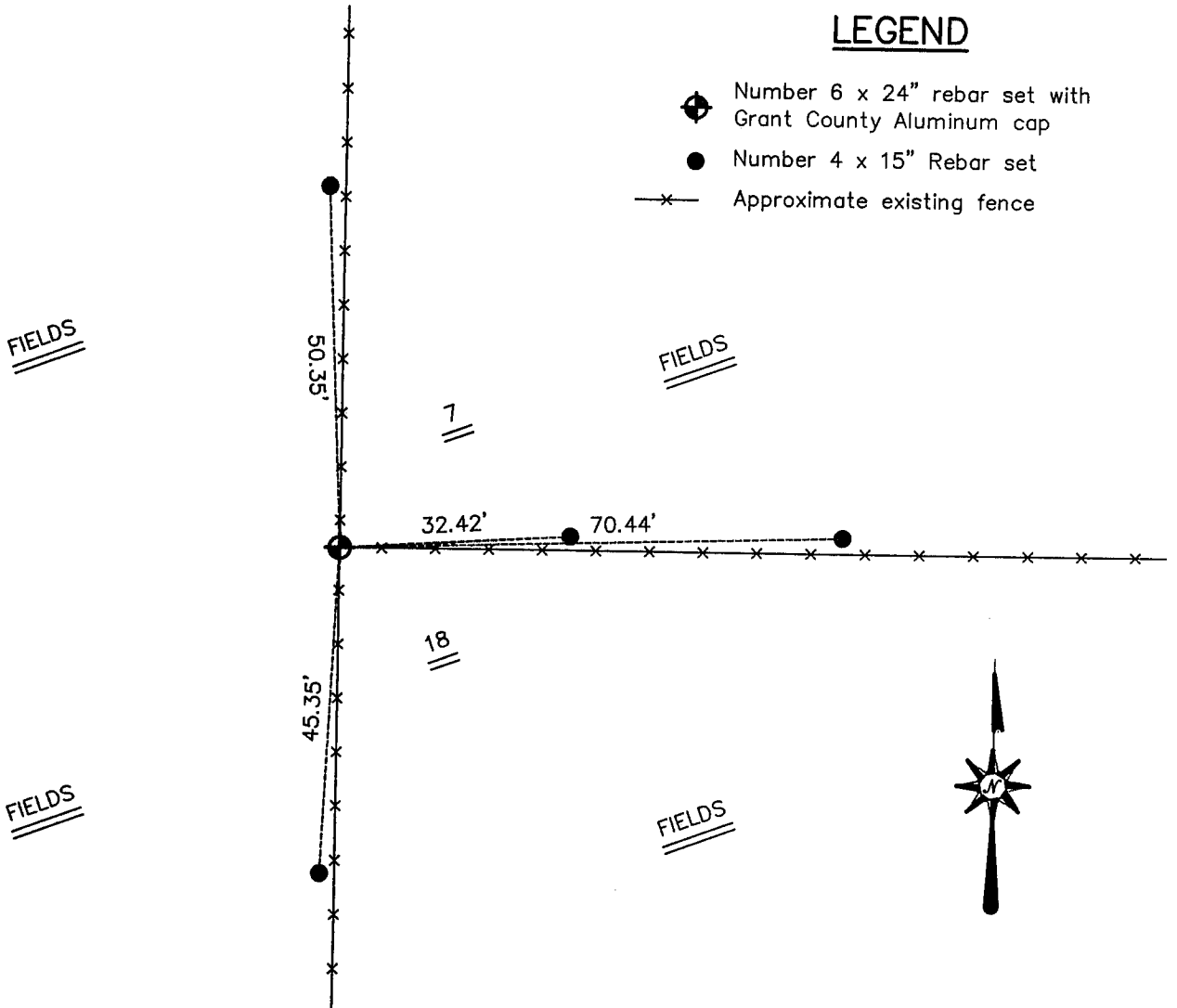
Corner was originally set in 1832 by Sibley. In 1880 Barber tied to the corner. In 1897 Sampson tied to the corner.

**DESCRIPTION OF CORNER EVIDENCE FOUND**

I found an existing fence corner and accepted it's location after an EDM & GPS traverse of the area.

**DESCRIPTION OF CORNER AND WITNESS MONUMENTS**, references and accessories used to perpetuate the original or re-established location of this corner. Witnesses to the corner location Bobby Sedgwick & Dan Ketchum

SKETCH:



SKETCH NOT TO SCALE

**AUSTIN ENGINEERING, LLC**

4211 HWY 81 EAST, LANCASTER, WI 53813  
 PHONE 608-723-6363 FAX 608-723-6702

FIELDBOOK: SDR33, 9602

G: \T4NR4W\07

C: \SWA\TIE\T4NR4W\53

CREW: BS-DK

DRAWN BY: SW AUSTIN

APPROVED: LL AUSTIN

**CORNER NUMBER 53**