

**U.S. PUBLIC LAND SURVEY MONUMENT RECORD - GRANT COUNTY, WI**

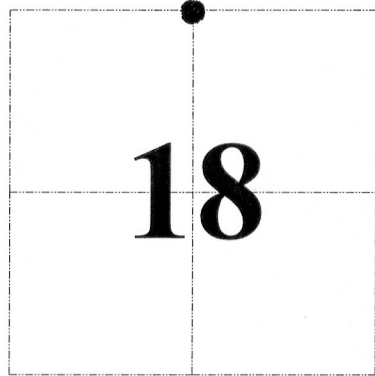
Section 18, Town 4 North Range 4 West, Town of Bloomington East

**CERTIFICATE:**

I, John R. Huseman, do hereby certify that the corner location on this record was determined by me and/or under my direct supervision and that this U.S. Public Land Survey Monument Record is correct and complete to the best of my knowledge and belief.

Dated this 31st day of October, 2012.

John R. Huseman  
John R. Huseman, RLS-1631-8



● = CORNER LOCATION

HISTORY OF CORNER ESTABLISHMENT:

No monumentation or recorded data was found for this corner.

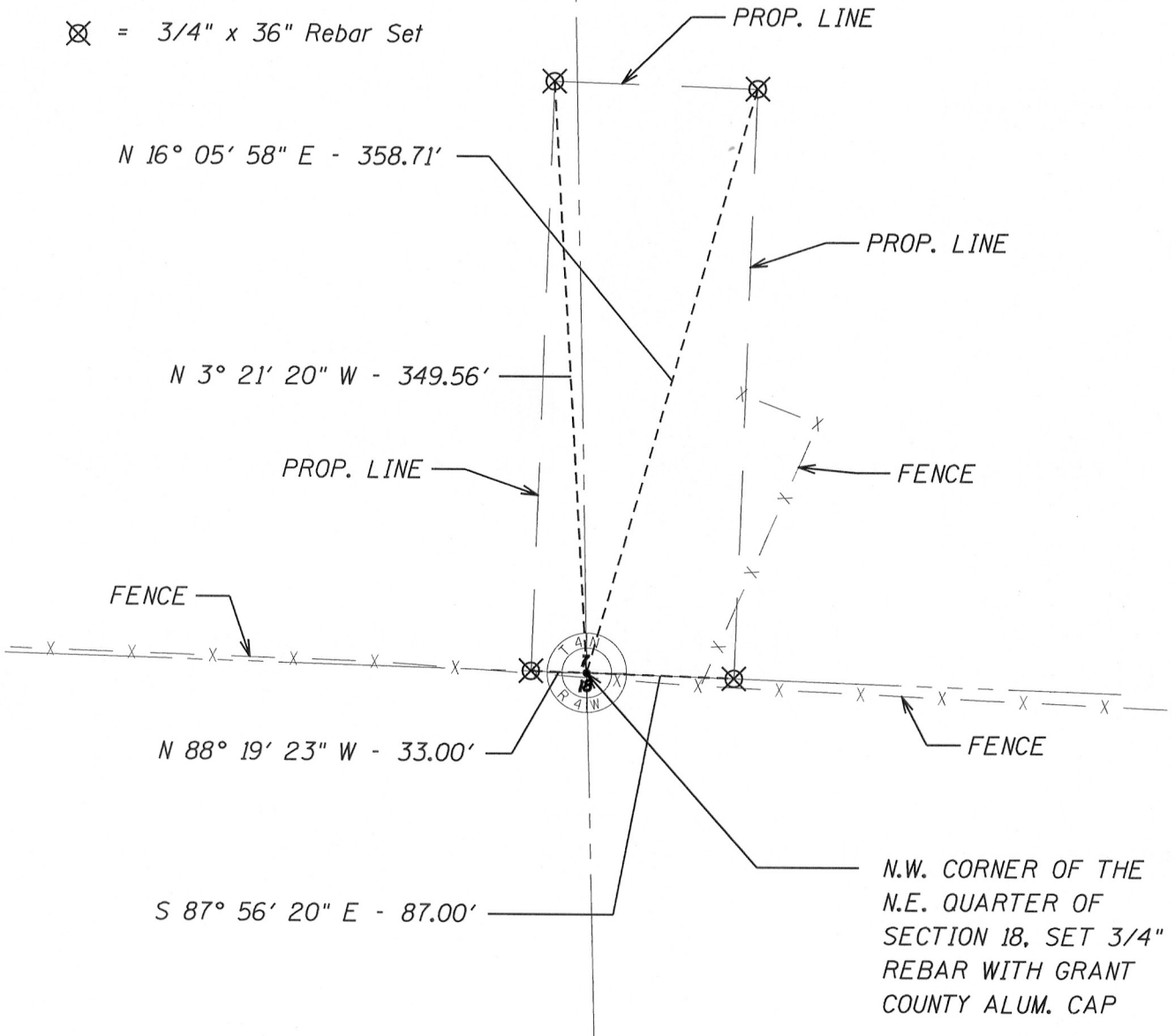
DESCRIPTION OF CORNER EVIDENCE FOUND:

Corner set by proration between the existing northwest and northeast section corners and using the average line of the division fences at the quarter corner location. The location was verified using GPS and Total Station measurements. The location fits occupation.

DESCRIPTION OF CORNER AND WITNESS MONUMENTS, references and accessories used to perpetuate the original or re-established location of this corner. Witnesses to corner location Ben Scheffner and Rey Munoz

**SKETCH:**

⊗ = 3/4" x 36" Rebar Set



NOV 27 2012  
52