

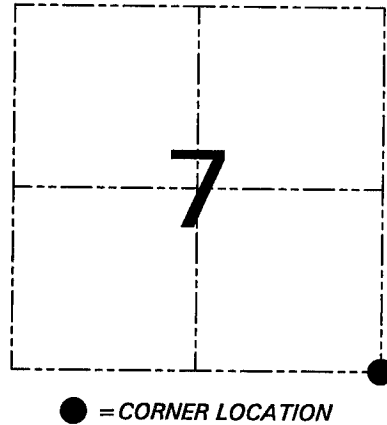
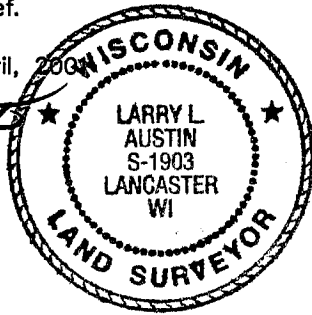
U.S. PUBLIC LAND SURVEY MONUMENT RECORD - GRANT COUNTY, WI
 Section 7, Town 4 North Range 4 West, Town of Beetown

CERTIFICATE

I, Larry L. Austin, do hereby certify that the corner location on this record was determined by me and/or under my direct supervision and that this U.S. public land survey monument record is correct and complete to the best of my knowledge and belief.

Dated this 6th day of April, 2007

Larry L. Austin
 Larry L. Austin S-1903



HISTORY OF CORNER ESTABLISHMENT

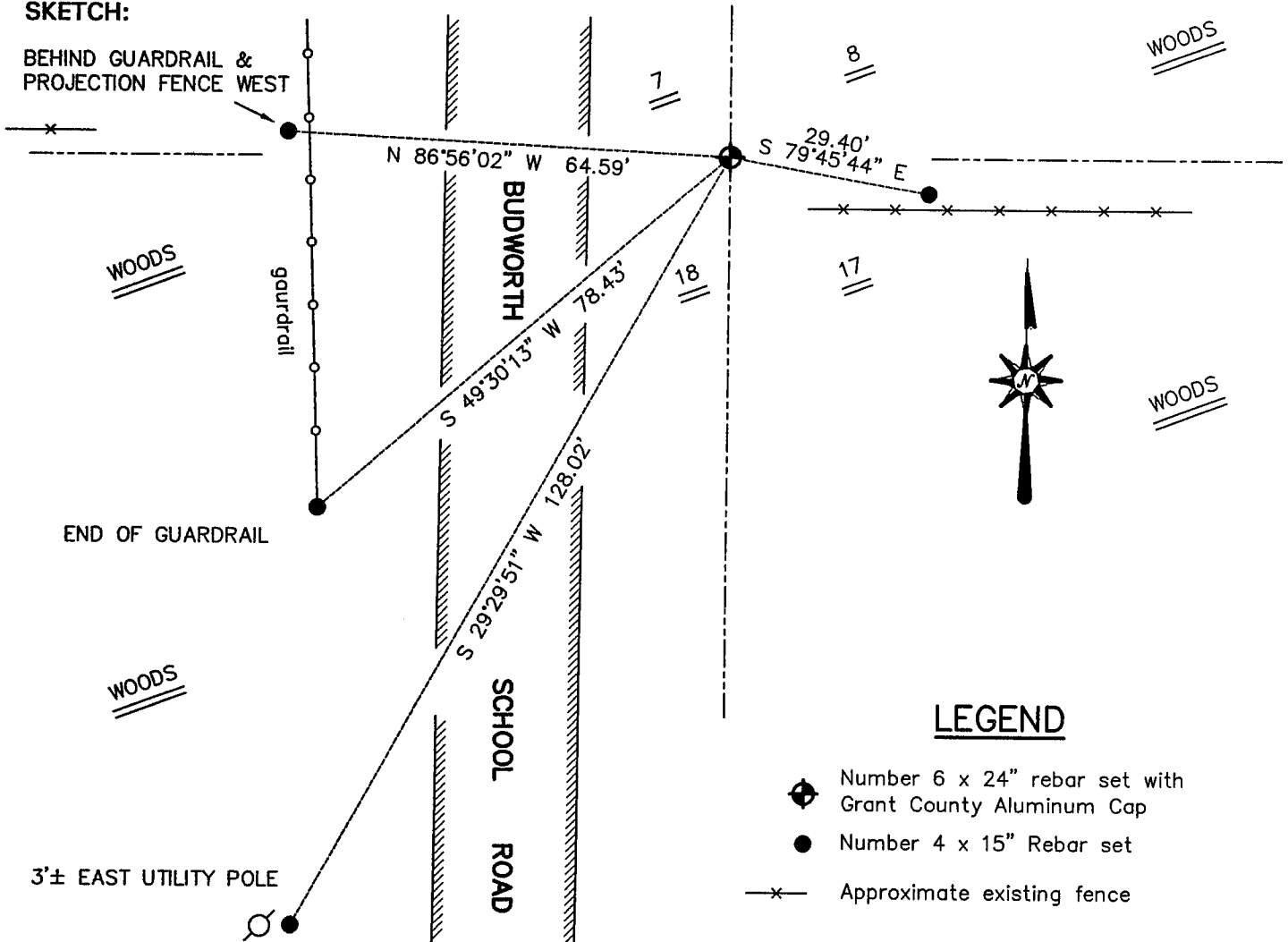
Corner was originally set in 1833 by Lucius Lyon. In 1880 Barber tied to the corner. In 1897 Sampson tied to the corner.

DESCRIPTION OF CORNER EVIDENCE FOUND

I found no evidence to the location of the corner. I reset the corner proportionately between the East 1/4 of Section 18 and the East line of Sections 6 & 7. Verified this location using EDM & GPS methods.

DESCRIPTION OF CORNER AND WITNESS MONUMENTS, references and accessories used to perpetuate the original or re-established location of this corner. Witnesses to the corner location Bobby Sedgwick & Dan Ketchum

SKETCH:



LEGEND

- Number 6 x 24" rebar set with Grant County Aluminum Cap
- Number 4 x 15" Rebar set
- Approximate existing fence

SKETCH NOT TO SCALE

AUSTIN ENGINEERING, LLC

4211 HWY 81 EAST, LANCASTER, WI 53813
 PHONE 608-723-6363 FAX 608-723-6702

FIELDBOOK: SDR33, 9602
 G: \T4NR4W\07
 C: \SWA\TIE\T4NR4W\52
 CREW: BS-DK

DRAWN BY: SW AUSTIN
 APPROVED: LL AUSTIN

CORNER NUMBER 51