

U.S. PUBLIC LAND SURVEY MONUMENT RECORD - GRANT COUNTY, WI

Section 16, Town 4 North Range 4 West, Town of Beetown (a)

NOTE: This form is intended and designed to fulfill all requirements of the Wisconsin Administrative Code Chapter A-E 7.08, U.S. Public Land Survey Monument Record (3) (a) (b) (c) (d) (e) (f) (g) (h) (i).

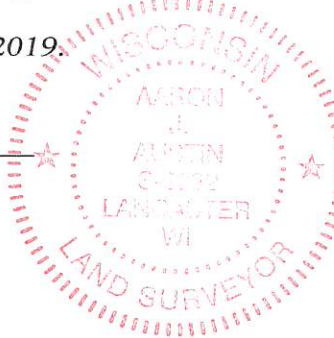
CERTIFICATE: (i)

I, Aaron J. Austin, Wisconsin Professional Land Surveyor, do hereby certify that the corner location on this record was determined by me and/or under my direct supervision and that this U.S. Public Land Survey Monument Record is correct and complete to the best of my knowledge and belief.

Dated this 16th day of November 2019.

Aaron J. Austin (Signature)

Aaron J. Austin, S-2922



⊕ = CORNER LOCATION

Grant County Coordinates:  
NAD 83 (2011)  
Northing: 516,707.22  
Easting: 783,502.25

HISTORY OF CORNER ESTABLISHMENT:

Original corner was set in 1833 by Robert Clark.  
Timothy Moore set a Bernsten Monument and prepared a Survey Monument Record dated 2/23/1988.  
William Woodman set a 3" iron pipe on a Survey dated 7/21/1991 and filed in Book Q, Page 2.  
Larry Austin prepared a Survey Monument Record for a 3/4" rebar dated 3/16/2001.

DESCRIPTION OF CORNER EVIDENCE FOUND: (b) (f) (g) (h)

It appears that Larry Austin did not find the iron pipe as set by Woodman and tied out a witness corner set by Timothy Moore. I found the iron pipe set by Woodman and accepted it's location after working in both Sections 15 and 16. I established four witness corners after I verified the Momument's location with G.P.S. and E.D.M. methods.

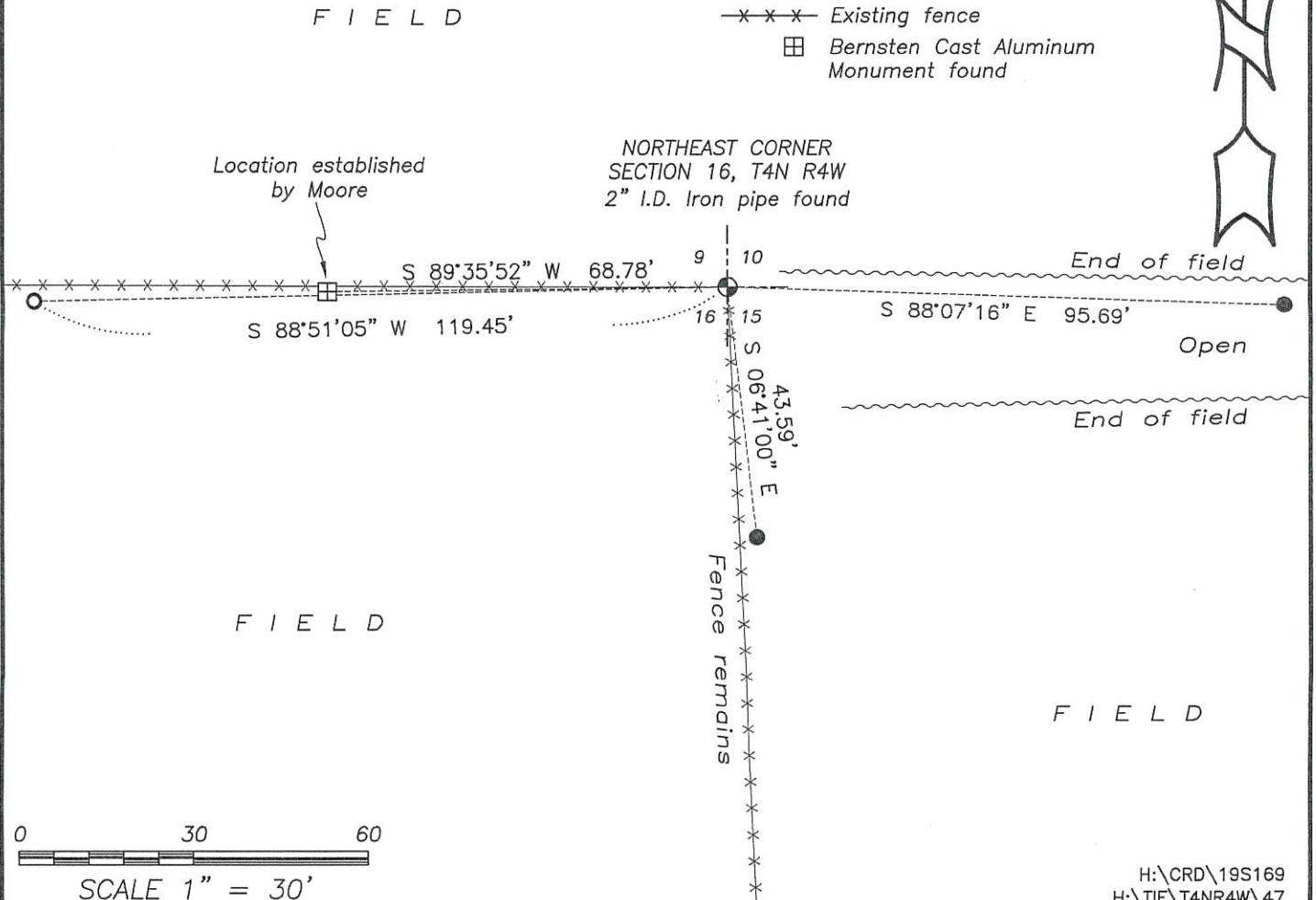
DESCRIPTION OF CORNER AND WITNESS MONUMENTS, references and accessories used to perpetuate the original or re-established location of this corner: (c) (d) (e)

Witnesses to corner location Shane Austin, Owen Austin.  
Drawn by: Owen Austin

SKETCH:

LEGEND

- ⊕ Section Corner—as designated
- 3/4" rebar found
- 3/4" x 18" rebar set
- x-x-x- Existing fence
- ⊞ Bernsten Cast Aluminum Monument found



# GRANT COUNTY CERTIFIED LAND CORNER

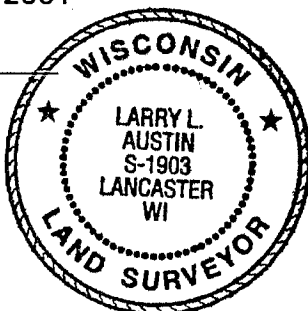
CORNER NUMBER 47

**CERTIFICATE:**

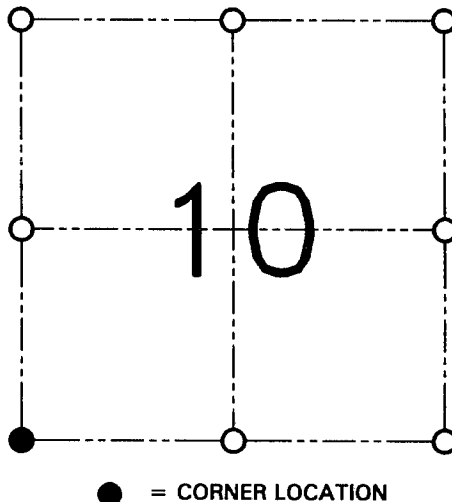
I, Larry L. Austin, do hereby certify that the corner location on this record was determined by me and/or under my direct supervision and that this U.S. public land survey monument record is correct and complete to the best of my knowledge and belief.

Dated this 16th day of March, 2001

*Larry L. Austin*  
Larry L. Austin, S-1903



SEAL



● = CORNER LOCATION

SECTION 10, T 4 N R 4 W  
TOWN OF BEETOWN

**HISTORY OF ORIGINAL CORNER ESTABLISHMENT:**

Corner was originally set in 1833 by Robert Clark. In 1844 Wiltse tied to the corner. In 1988 Tim Moore set a Bernsten Aluminum monument.

**DESCRIPTION OF CORNER EVIDENCE FOUND:**

I found the Bernsten Aluminum monument to be incorrect. I found the existing Number 6 iron bar at the occupied fence corner East of the Aluminum monument to be more proportionate to the East, West, North and South. Verified this location using EDM & GPS methods.

**DESCRIPTION OF CORNER AND WITNESS MONUMENTS**

references and accessories used to perpetuate the original or re-established location of this corner.

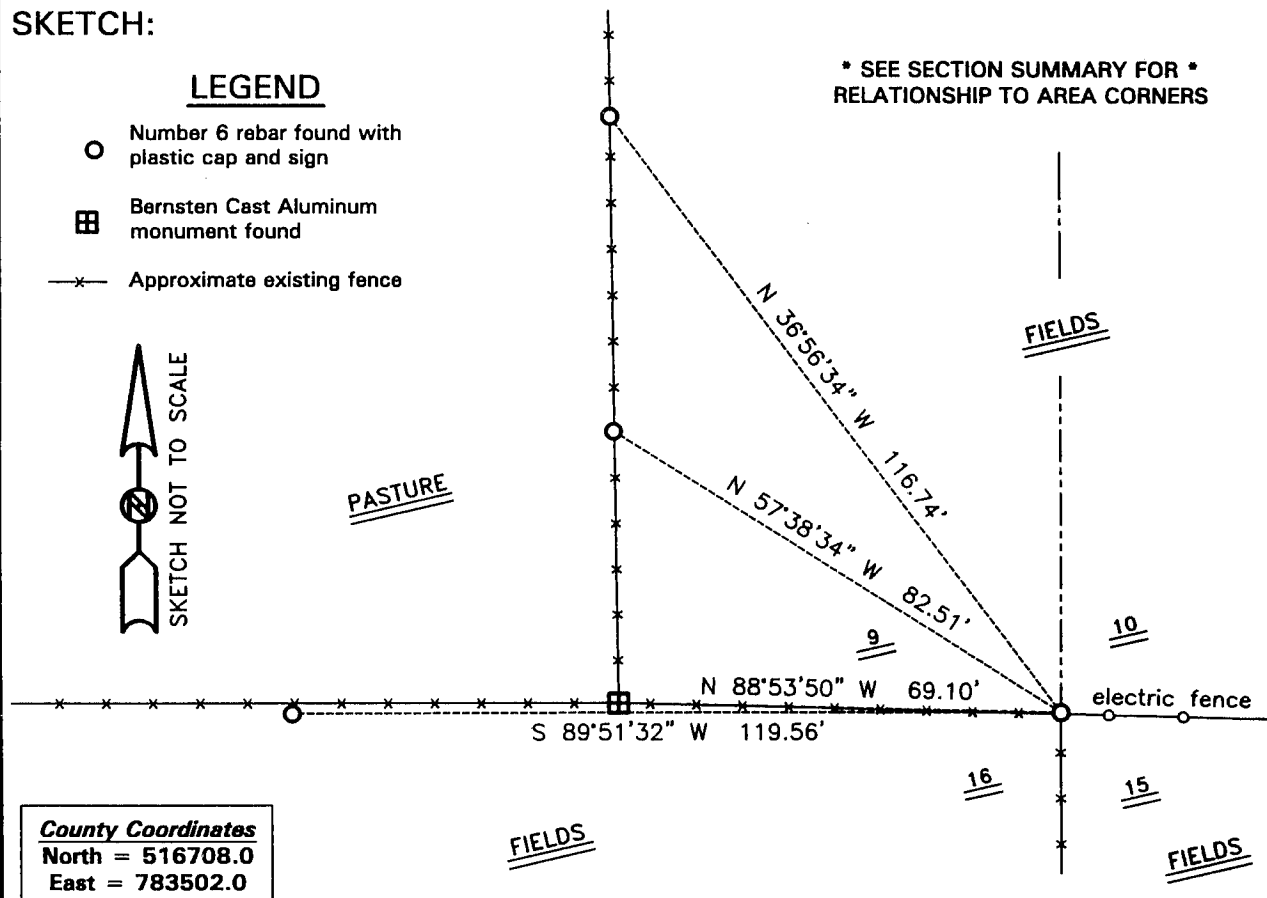
**SKETCH:**

LEGEND

- Number 6 rebar found with plastic cap and sign
- ⊞ Bernsten Cast Aluminum monument found
- x— Approximate existing fence



\* SEE SECTION SUMMARY FOR \*  
RELATIONSHIP TO AREA CORNERS



**County Coordinates**  
North = 516708.0  
East = 783502.0

**AUSTIN ENGINEERING, LLC**  
4211 HWY 81 E, LANCASTER, WI 53813  
PHONE 608-723-6363 FAX 608-723-6702

FIELDBOOK: SDR33, 2010  
G:\T4NR4W\22  
G:\SWA\TIE\T4NR4W\47

DRAWN BY: SW AUSTIN  
APPROVED: LL AUSTIN  
CREW: BS-SB-SA-TF  
SHEET 1 OF 1

JUN 14 2001

# U. S. PUBLIC LAND SURVEY MONUMENT RECORD

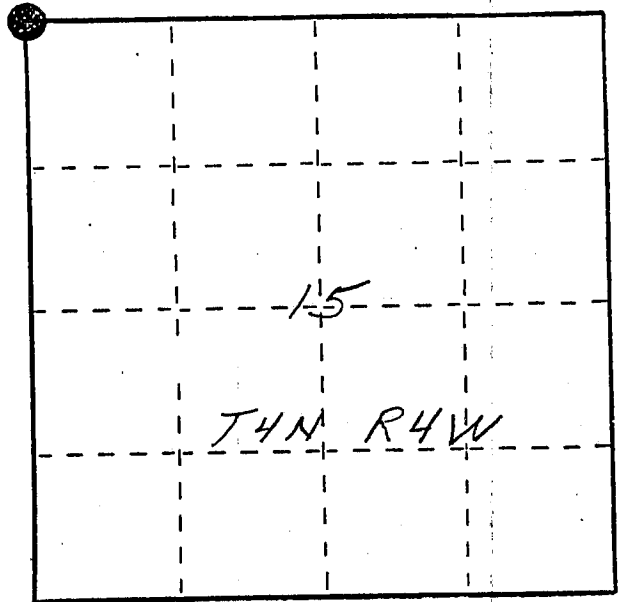
INSTRUCTIONS: This record shall show the location of the corner and shall include all of the following nine elements (a through i).

- (a) Identify the corner by reference to the U.S. public land survey system.  
 ● = Corner monument restored.

NW corner section 15  
 T4N R4W of the  
 4th P.M.  
 Town of Beetown  
 Grant County, Wisconsin

RECORDED

MAR 2 1988



- (b) Describe any record evidence, monument evidence, occupational evidence, testimonial evidence or any other material evidence you considered, and whether the monument was found or placed.

Monument set at existing fence corner. Nail and washer was found on top of corner post. Talked with Dick Weidenbeck, Calvin Keil and Burrell Bishop. They all said that some previous surveying had been done in the area. They all agreed that corner post was also marking the section corner. A one inch iron pipe was found a half mile east. This iron was set by Kenneth A Kerst Jr. S-1385 as being the NW corner of section 15. The distance between corners seems long. A topo call to the Grant River agrees

- (c) In the plan view drawing below, provide reference ties to at least 4 witness monuments, or, if the location is within a municipality, to at least 2 witness monuments. (Witness monuments shall be made of concrete, natural stone, iron or other equally durable material, ~~except wood~~.) Describe witness monuments.

fairly well with corner location. No surveys could be found relating to this corner.

- (d) Show a plan view drawing depicting the relevant monuments and reference ties which is sufficient in detail to enable accurate relocation of the corner monument if the corner monument is disturbed. Indicate north.

No Scale  
 Bearings - Wis. Grid

● Berntsen A-1 mon.  
 set 0.1' below ground

○ Ref. mon. - 3/4" x 24"  
 rebar w/cap.

