

# GRANT COUNTY CERTIFIED LAND CORNER

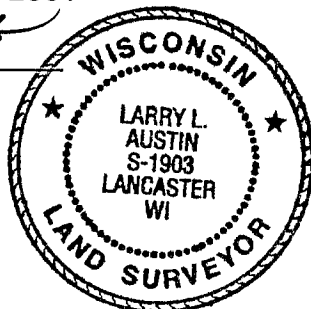
CORNER NUMBER 37

**CERTIFICATE:**

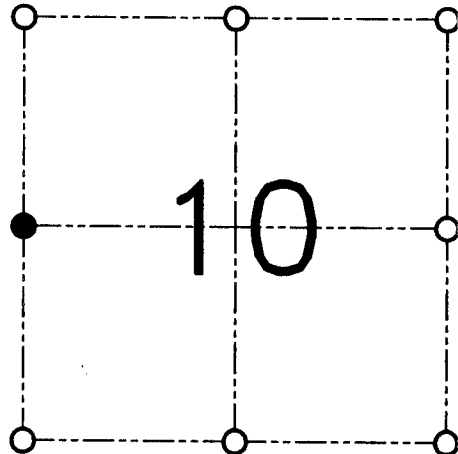
I, Larry L. Austin, do hereby certify that the corner location on this record was determined by me and/or under my direct supervision and that this U.S. public land survey monument record is correct and complete to the best of my knowledge and belief.

Dated this 16th day of March, 2001

*Larry L. Austin*  
\_\_\_\_\_  
Larry L. Austin, S-1903



SEAL



● = CORNER LOCATION

SECTION 10, T 4 N R 4 W  
TOWN OF BEETOWN

**HISTORY OF ORIGINAL CORNER ESTABLISHMENT:**

Corner was originally set in 1833 by Robert Clark.  
No other record of the corner was found.

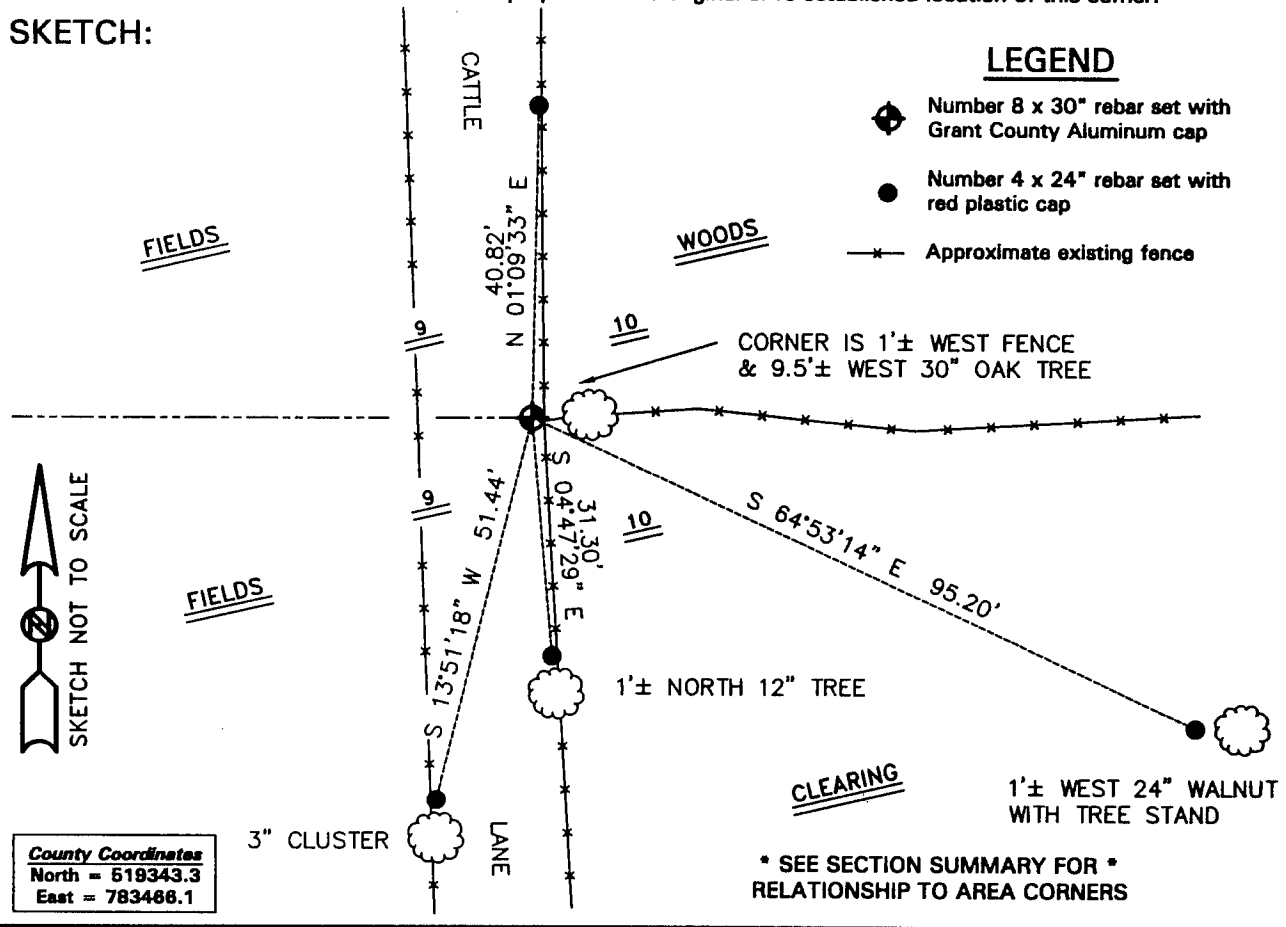
**DESCRIPTION OF CORNER EVIDENCE FOUND:**

I reset the corner at an occupied fence corner. This location fit well with area corners. Verified it's location using EDM & GPS methods.

**DESCRIPTION OF CORNER AND WITNESS MONUMENTS**

references and accessories used to perpetuate the original or re-established location of this corner.

**SKETCH:**



**County Coordinates**  
North = 519343.3  
East = 783486.1

\* SEE SECTION SUMMARY FOR \*  
RELATIONSHIP TO AREA CORNERS

**AUSTIN ENGINEERING, LLC**  
4211 HWY 81 E, LANCASTER, WI 53813  
PHONE 608-723-6363 FAX 608-723-6702

FIELDBOOK: SDR33, 2010  
G:\T4NR4W\22  
G:\SWA\TIE\T4NR4W\37

DRAWN BY: SW AUSTIN  
APPROVED: LL AUSTIN  
CREW: BS-SB-SA-TF  
SHEET 1 OF 1

JUN 14 2001