

44034

U.S. PUBLIC LAND SURVEY MONUMENT RECORD - GRANT COUNTY, WI

Section 7, Town 4 North Range 4 West, Town of Beetown (a)

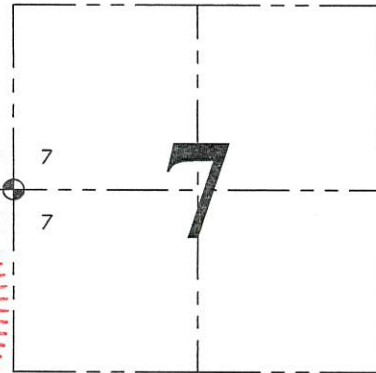
NOTE: This form is intended and designed to fulfill all requirements of the Wisconsin Administrative Code Chapter A-E 7.08, U.S. Public Land Survey Monument Record (3) (a) (b) (c) (d) (e) (f) (g) (h) (i).

CERTIFICATE: (i)

I, Aaron J. Austin, Wisconsin Professional Land Surveyor, do hereby certify that the corner location on this record was determined by me and/or under my direct supervision and that this U.S. Public Land Survey Monument Record is correct and complete to the best of my knowledge and belief.

Dated this 19th day of June, 2019.

Aaron J. Austin
Aaron J. Austin, S-2922



⊕ = CORNER LOCATION

Grant County Coordinates:
NAD 83 (2011)
Northing: 519,568.98
Easting: 767,867.16

HISTORY OF CORNER ESTABLISHMENT:

Original corner was set in 1832 by Sibley.
Larry Austin set a monument and prepared a Survey Monument Record dated 4/6/2001.

DESCRIPTION OF CORNER EVIDENCE FOUND: (b) (f) (g) (h)

I found the monument as set by Larry Austin and two of his witness corners. I set two additional witness corners after I verified the monument's location with G.P.S. and E.D.M. methods.

DESCRIPTION OF CORNER AND WITNESS MONUMENTS, references and accessories used to perpetuate the original or re-established location of this corner. (c) (d) (e)

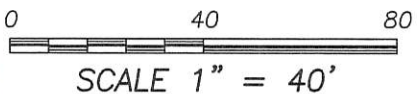
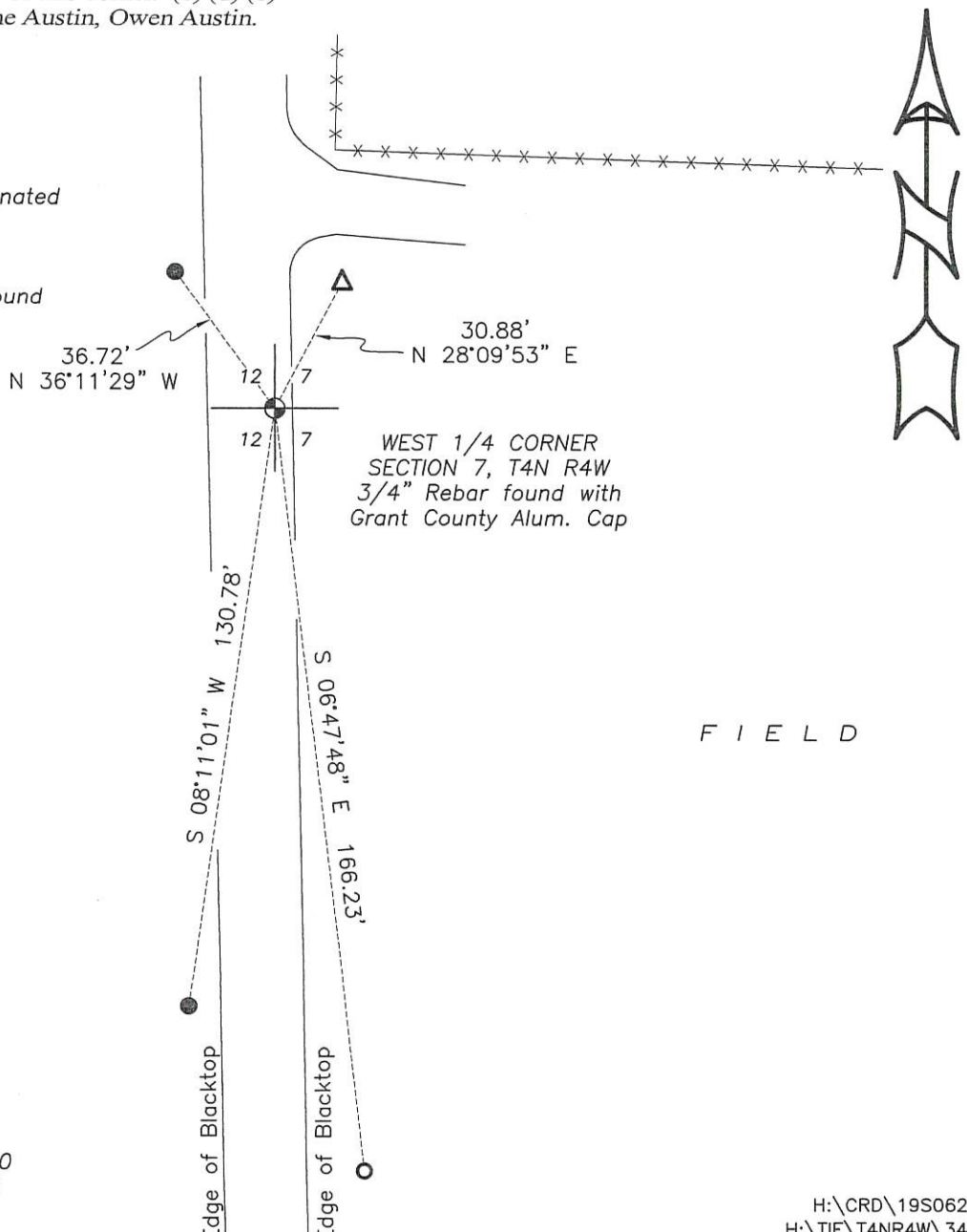
Witnesses to corner location Shane Austin, Owen Austin.

Drawn by: Owen Austin

SKETCH:

LEGEND

- ⊕ Section Corner—as designated
- 3/4" x 18" rebar set
- 1/2" rebar reset
- △ 1" diameter iron pipe found
- x-x-x- Existing fence



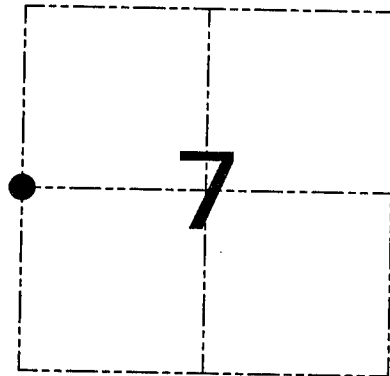
U.S. PUBLIC LAND SURVEY MONUMENT RECORD - GRANT COUNTY, WI
 Section 7, Town 4 North Range 4 West, Town of Beetown

CERTIFICATE

I, Larry L. Austin, do hereby certify that the corner location on this record was determined by me and/or under my direct supervision and that this U.S. public land survey monument record is correct and complete to the best of my knowledge and belief.

Dated this 6th day of April, 2007

Larry L. Austin
 Larry L. Austin S-1903



● = CORNER LOCATION

HISTORY OF CORNER ESTABLISHMENT

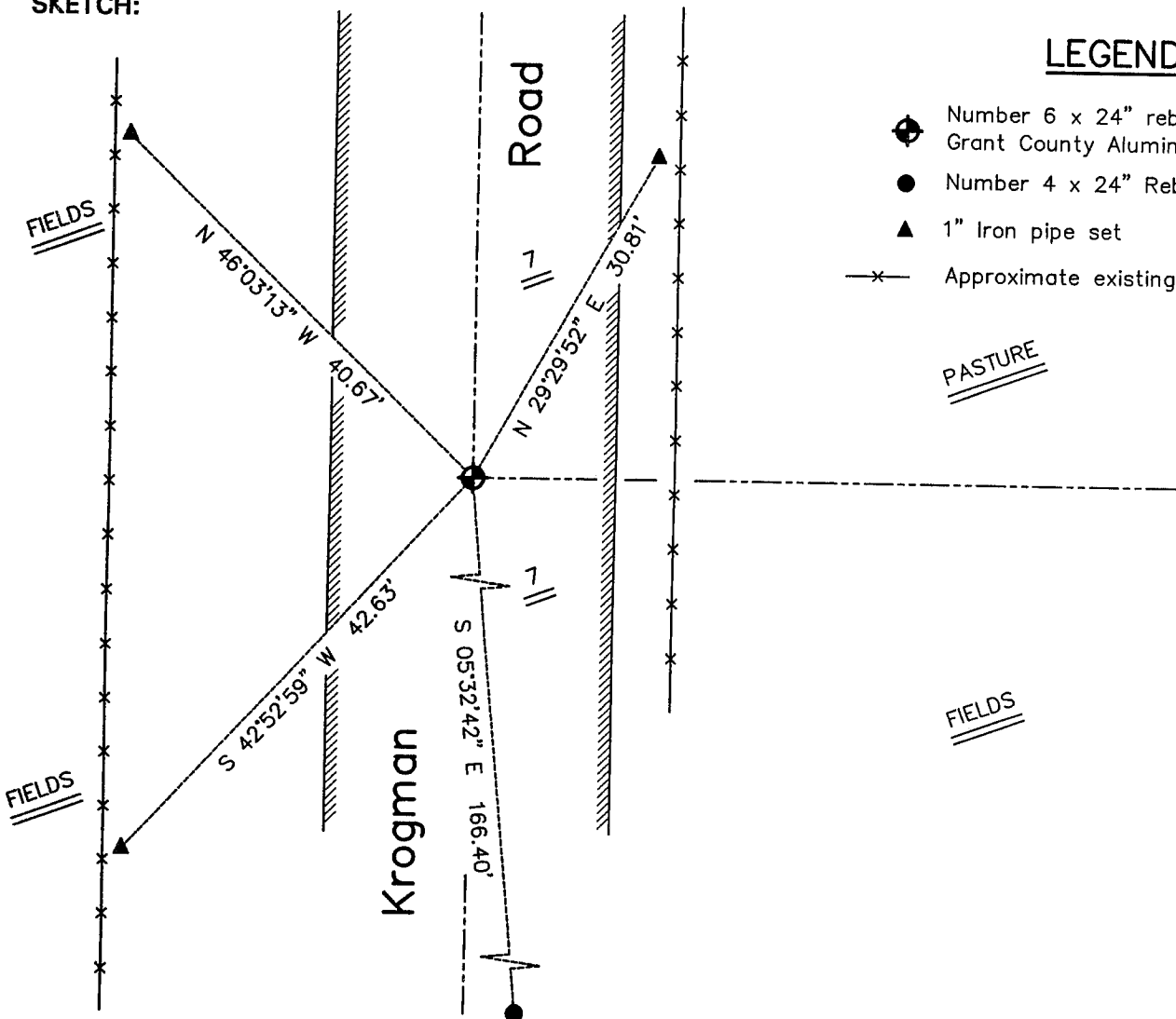
Corner was originally set in 1832 by Sibley. In 1844 Wiltse tied to the corner. In 1880 Joel Barber tied to the corner. In 1897 Sampson tied to the corner. No other record of the corner was found.

DESCRIPTION OF CORNER EVIDENCE FOUND

I found no evidence to the location of Sampson or Barber's corner. I reset the corner proportionately between the Northwest and Southwest corners of Section 7.

DESCRIPTION OF CORNER AND WITNESS MONUMENTS, references and accessories used to perpetuate the original or re-established location of this corner. Witnesses to the corner location Bobby Sedgwick & Dan Ketchum

SKETCH:



LEGEND

- Number 6 x 24" rebar set with Grant County Aluminum Cap
- Number 4 x 24" Rebar set
- ▲ 1" Iron pipe set
- x— Approximate existing fence



SKETCH NOT TO SCALE

AUSTIN ENGINEERING, LLC

4211 HWY 81 EAST, LANCASTER, WI 53813
 PHONE 608-723-6363 FAX 608-723-6702

FIELDBOOK: SDR33, 9602
 G: \T4NR4W\07
 C: \SWA\TIE\T4NR4W\34
 CREW: BS-DK

DRAWN BY: SW AUSTIN
 APPROVED: LL AUSTIN

CORNER NUMBER 34