

U.S. PUBLIC LAND SURVEY MONUMENT RECORD - GRANT COUNTY, WI

Section 2, Town 4 North Range 4 West, Town of Beetown (a)

NOTE: This form is intended and designed to fulfill all requirements of the Wisconsin Administrative Code Chapter A-E 7.08, U.S. Public Land Survey Monument Record (3) (a) (b) (c) (d) (e) (f) (g) (h) (i).

CERTIFICATE: (i)

I, Aaron J. Austin, Wisconsin Professional Land Surveyor, do hereby certify that the corner location on this record was determined by me and/or under my direct supervision and that this U.S. Public Land Survey Monument Record is correct and complete to the best of my knowledge and belief.

Dated this 3rd day of March, 2023.

*Aaron J. Austin*

Aaron J. Austin, S-2922



● = CORNER LOCATION

Grant County Coordinates:  
NAD 83 (2011)  
Northing: 522,082.31  
Easting: 788,743.41

HISTORY OF CORNER ESTABLISHMENT:

Original corner was set in 1833 by Robert Clark.  
Larry Austin set a 3/4" Rebar with a Grant County Aluminum Cap and prepared a Survey Monument Record dated 7/17/1996.

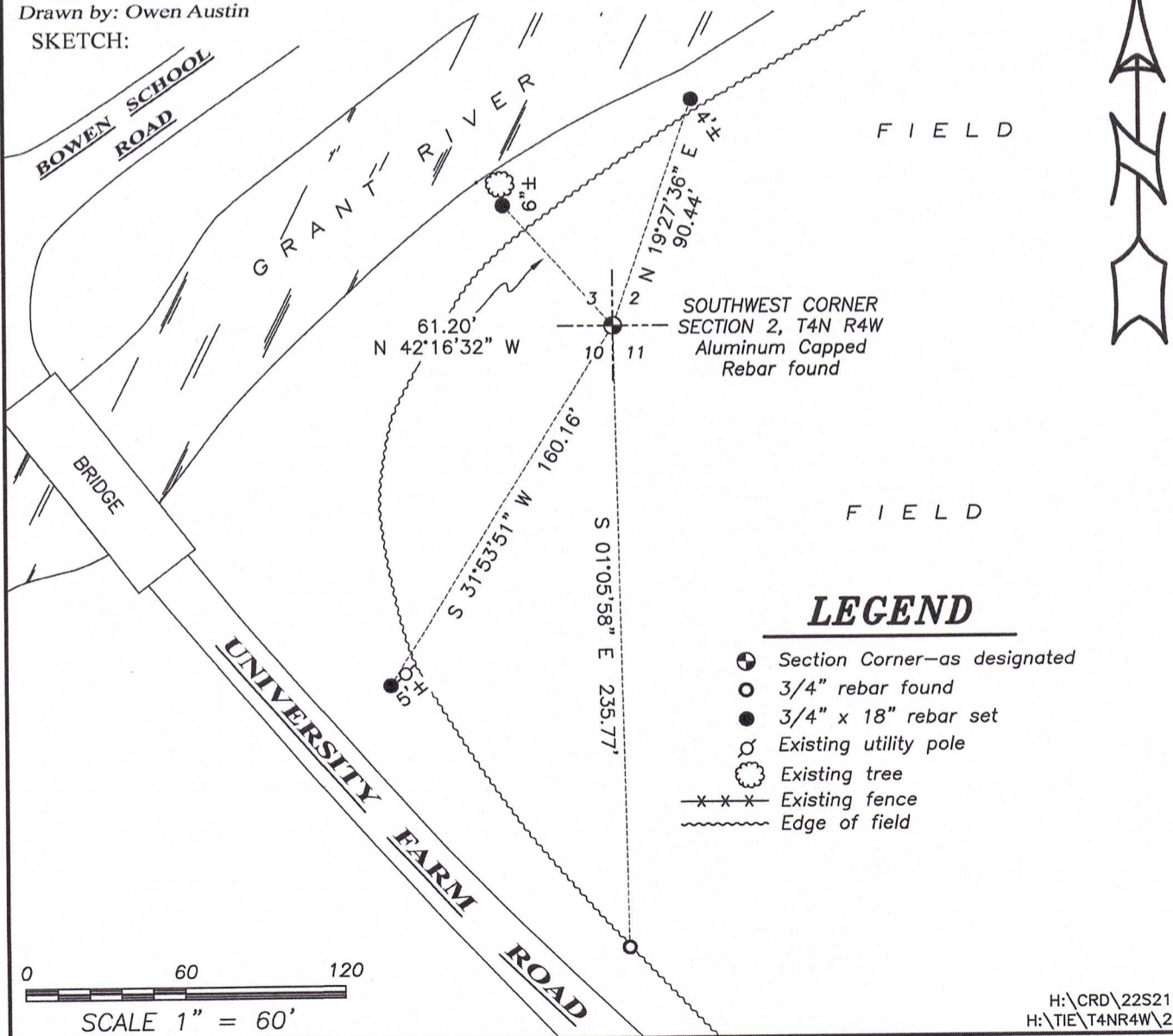
DESCRIPTION OF CORNER EVIDENCE FOUND: (b) (f) (g) (h)

I found the Aluminum Capped Rebar and one witness corner Larry set. I reset one existing witness and established three additional witness corners after I verified the Monument's location with G.P.S. and E.D.M. methods.

DESCRIPTION OF CORNER AND WITNESS MONUMENTS, references and accessories used to perpetuate the original or re-established location of this corner. (c) (d) (e)

Witnesses to corner location Owen Austin, Tanner Austin.  
Drawn by: Owen Austin

SKETCH:

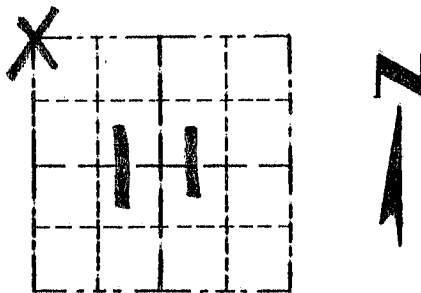


Survey Monument Record

TYPE OF MONUMENT 3/4" x 24" IRON BAR  
SET WITH GRANT COUNTY CAP

CORNER NO. 25  
 SECTION 11  
 TOWN 4N  
 RANGE 4W

FIELD BOOK: 96-04  
 PAGE 15



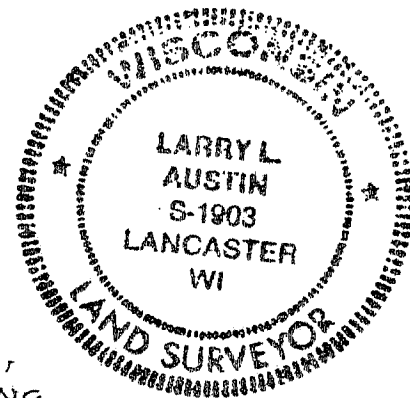
LOCATION  
 (Indicated by "X")

BASIS FOR MONUMENT LOCATION

(Use reverse side if necessary)

Show info such as: History of corner, with reference to Vol. and pg., dates, surveyor; exact description of monument replaced; if location computed, by taped or EDM traverse; landowner, remarks, etc.

SEAL:



NO RECORD FOUND SINCE ORIGINAL SURVEY IN 1833 BY CLARK. NORTH-SOUTH LOCATION OF THE CORNER BASED ON DOUBLING OF "40" CORNER FROM THE NORTH; N-E-W LOCATION BASED ON PROPORTIONING 1 MILE TO THE EAST & 1/2 MILE TO THE WEST. VERIFIED THIS LOCATION BY EDM TRAVERSE OF THE AREA

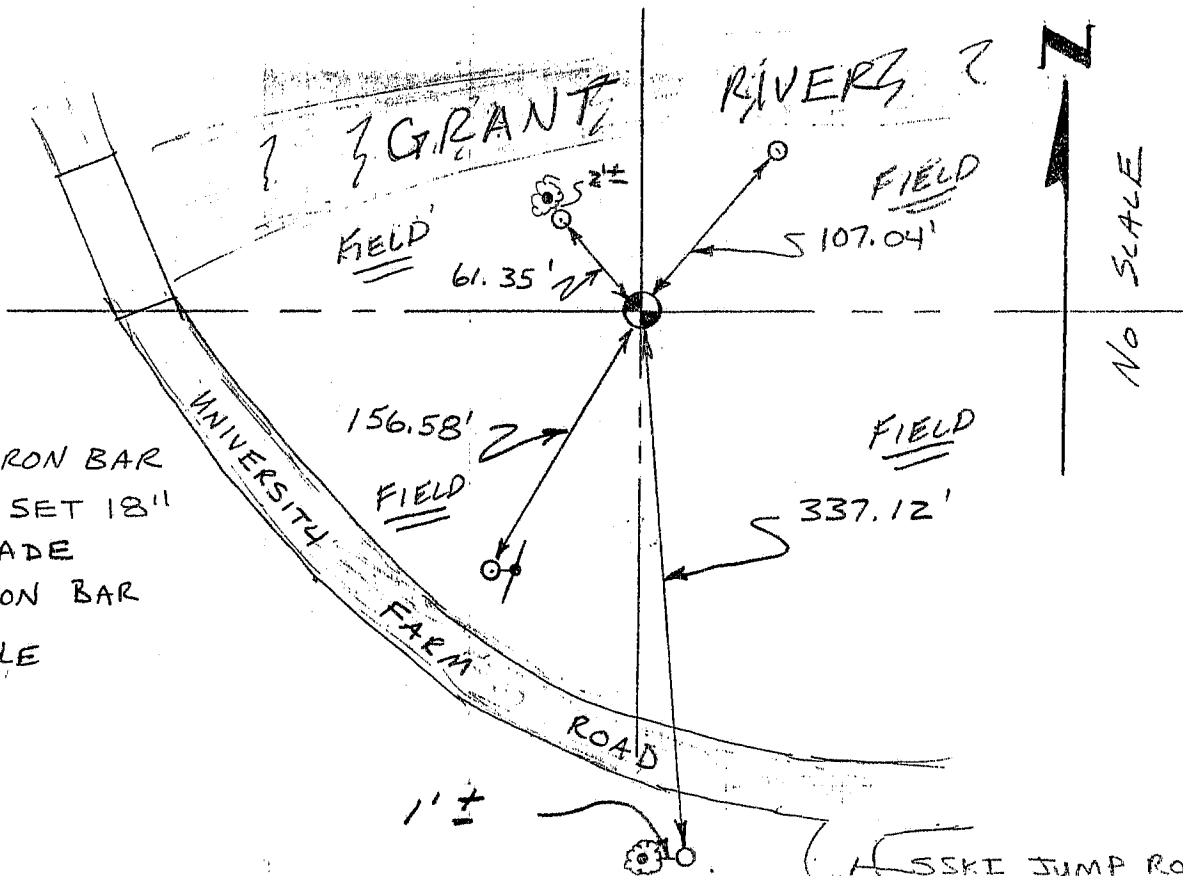
CERTIFIED CORRECT

*Larry L. Austin*  
 Registered Land Surveyor

DATE: 7-17-96

TIE SKETCH

Show at least three (3) ties and monument



LEGEND

- ⊕ 3/4" x 24" IRON BAR WITH CAP SET 18" BELOW GRADE
- 3/8" x 15" IRON BAR
- ⚡ POWER POLE