

U.S. PUBLIC LAND SURVEY MONUMENT RECORD - GRANT COUNTY, WI

Section 11, Town 4 North Range 4 West, Town of Beetown (a)

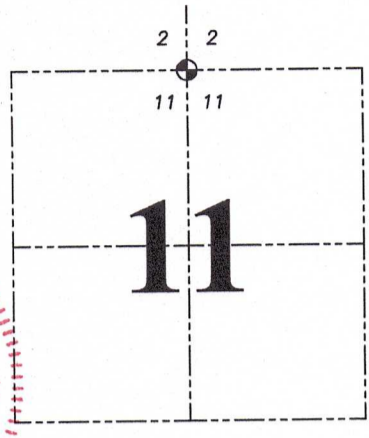
NOTE: This form is intended and designed to fulfill all requirements of the Wisconsin Administrative Code Chapter A-E 7.08, U.S. Public Land Survey Monument Record (3) (a) (b) (c) (d) (e) (f) (g) (h) (i).

CERTIFICATE: (i)

I, Aaron J. Austin, Wisconsin Professional Land Surveyor, do hereby certify that the corner location on this record was determined by me and/or under my direct supervision and that this U.S. Public Land Survey Monument Record is correct and complete to the best of my knowledge and belief.

Dated this 3rd day of March, 2023.

Aaron J. Austin
Aaron J. Austin, S-2922



● = CORNER LOCATION

Grant County Coordinates:
NAD 83 (2011)
Northing: 522,050.66
Easting: 791,414.26

HISTORY OF CORNER ESTABLISHMENT:

Original corner was set in 1833 by Robert Clark.
Larry Austin did not set a Monument and prepared a Survey Record dated 7/17/1996.

DESCRIPTION OF CORNER EVIDENCE FOUND: (b) (f) (g) (h)

Corner was reset online and equidistant between the Northeast and Northwest corners of Section 11, as previously retraced by Larry Austin on a tie sheet dated 7/17/1996. I was able to set a 1 1/4" x 30" Rebar after the River changed course. I found one witness corner and I set three additional witness corners after I verified the Monument's location with G.P.S. and E.D.M. methods.

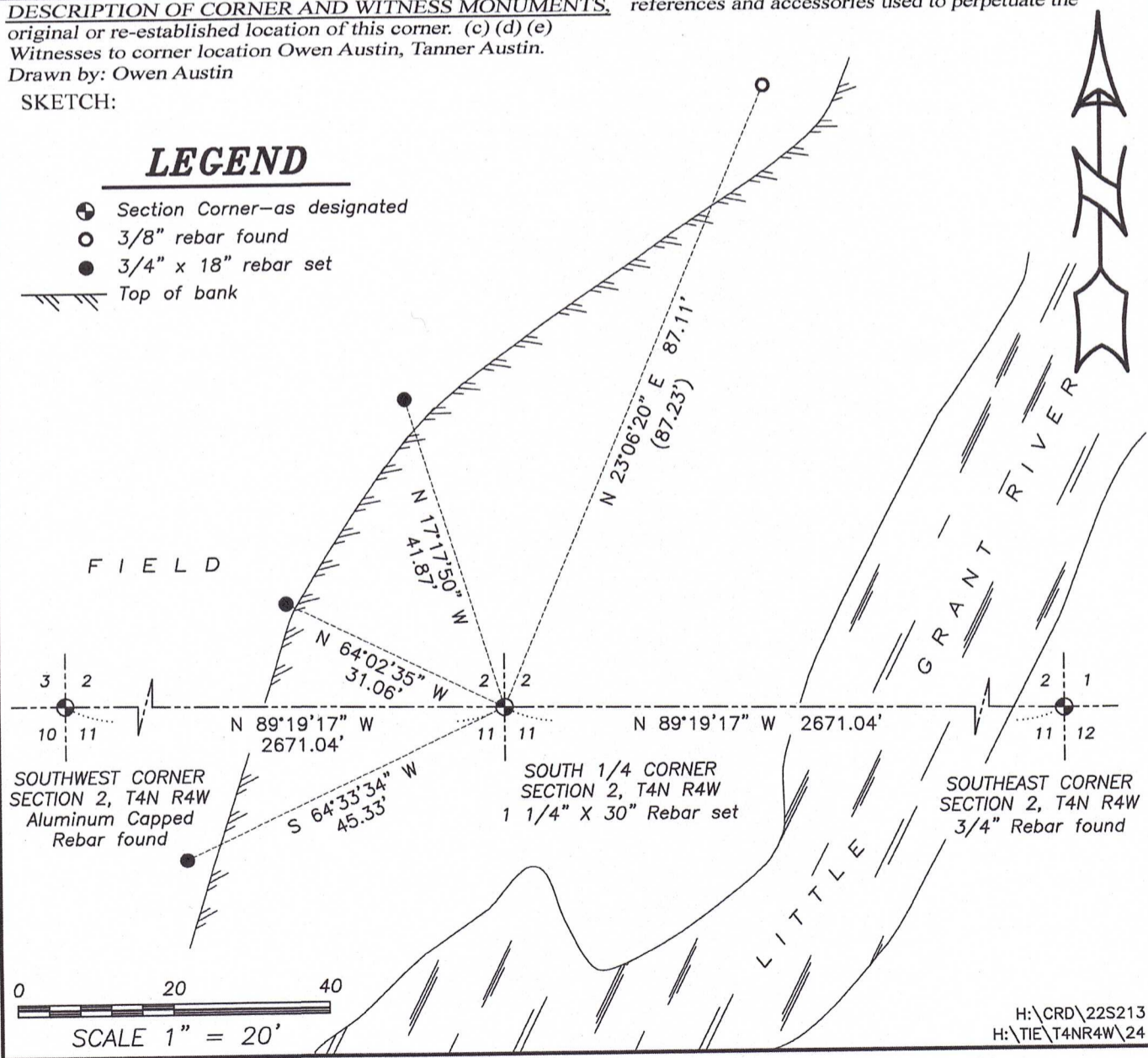
DESCRIPTION OF CORNER AND WITNESS MONUMENTS: references and accessories used to perpetuate the original or re-established location of this corner. (c) (d) (e)

Witnesses to corner location Owen Austin, Tanner Austin.
Drawn by: Owen Austin

SKETCH:

LEGEND

- Section Corner—as designated
- 3/8" rebar found
- 3/4" x 18" rebar set
- ▨ Top of bank



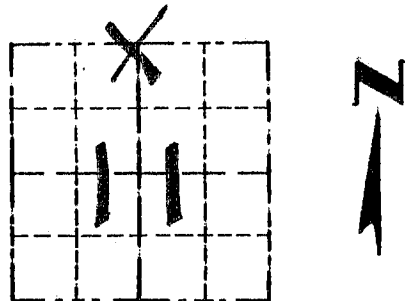
X

Survey Monument Record

TYPE OF MONUMENT No MONUMENT
PLACED

CORNER NO. 24
SECTION 11
TOWN 4N
RANGE 4W

FIELD BOOK: 96-04
PAGE 15



LOCATION
(Indicated by "X")

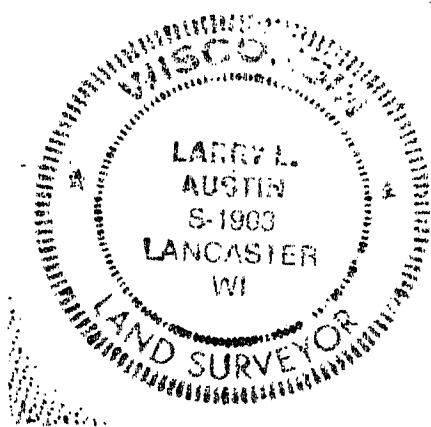
BASIS FOR MONUMENT LOCATION

(Use reverse side if necessary)

Show info such as: History of corner, with reference to Vol. and pg.; dates, surveyor; exact description of monument replaced; if location computed, by taped or EDM traverse; landowner, remarks, etc.

SEAL:

NO RECORD FOUND OF CORNER SINCE ORIGINAL SURVEYS; I SET THE CORNER BY PROPORTIONING FROM AN EXISTING FENCE CORNER 1/2 MILE EAST AND AN EXISTING MONUMENT 1/2 MILE WEST; VERIFIED BY EDM TRAVERSE OF THE AREA.



CERTIFIED CORRECT

Larry L. Austin
Registered Land Surveyor

DATE: 7/17/96

TIE SKETCH

Show at least three (3) ties and monument

LEGEND

- ⊕ NO MONUMENT PLACED
- 3/4" x 24" IRON BAR SET FIELD
- 3/8" x 15" IRON ROD SET

