

44023

U.S. PUBLIC LAND SURVEY MONUMENT RECORD - GRANT COUNTY, WI

Section 1, Town 4 North Range 4 West, Town of Beetown (a)

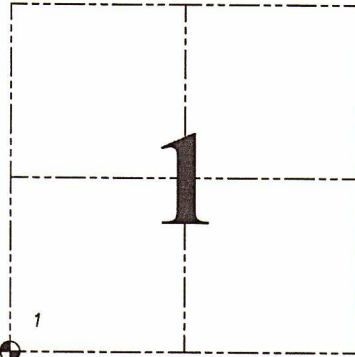
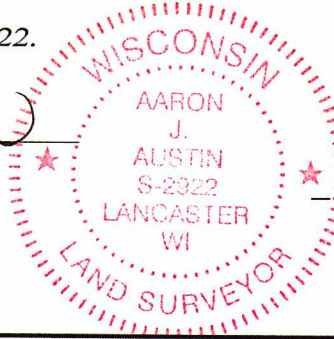
NOTE: This form is intended and designed to fulfill all requirements of the Wisconsin Administrative Code Chapter A-E 7.08, U.S. Public Land Survey Monument Record (3) (a) (b) (c) (d) (e) (f) (g) (h) (i).

CERTIFICATE: (i)

I, Aaron J. Austin, Wisconsin Professional Land Surveyor, do hereby certify that the corner location on this record was determined by me and/or under my direct supervision and that this U.S. Public Land Survey Monument Record is correct and complete to the best of my knowledge and belief.

Dated this 10th day of May, 2022.

Aaron J. Austin
Aaron J. Austin, S-2922



Grant County Coordinates:
NAD 83 (2011)
Northing: 522,019.02
Easting: 794,085.12

⊕ = CORNER LOCATION

HISTORY OF CORNER ESTABLISHMENT:

Original corner was set in 1833 by Robert Clark.
Larry Austin set a 3/4" Rebar with a Grant County Cap and prepared a Survey Monument Record dated 7/17/1996.

DESCRIPTION OF CORNER EVIDENCE FOUND: (b) (f) (g) (h)

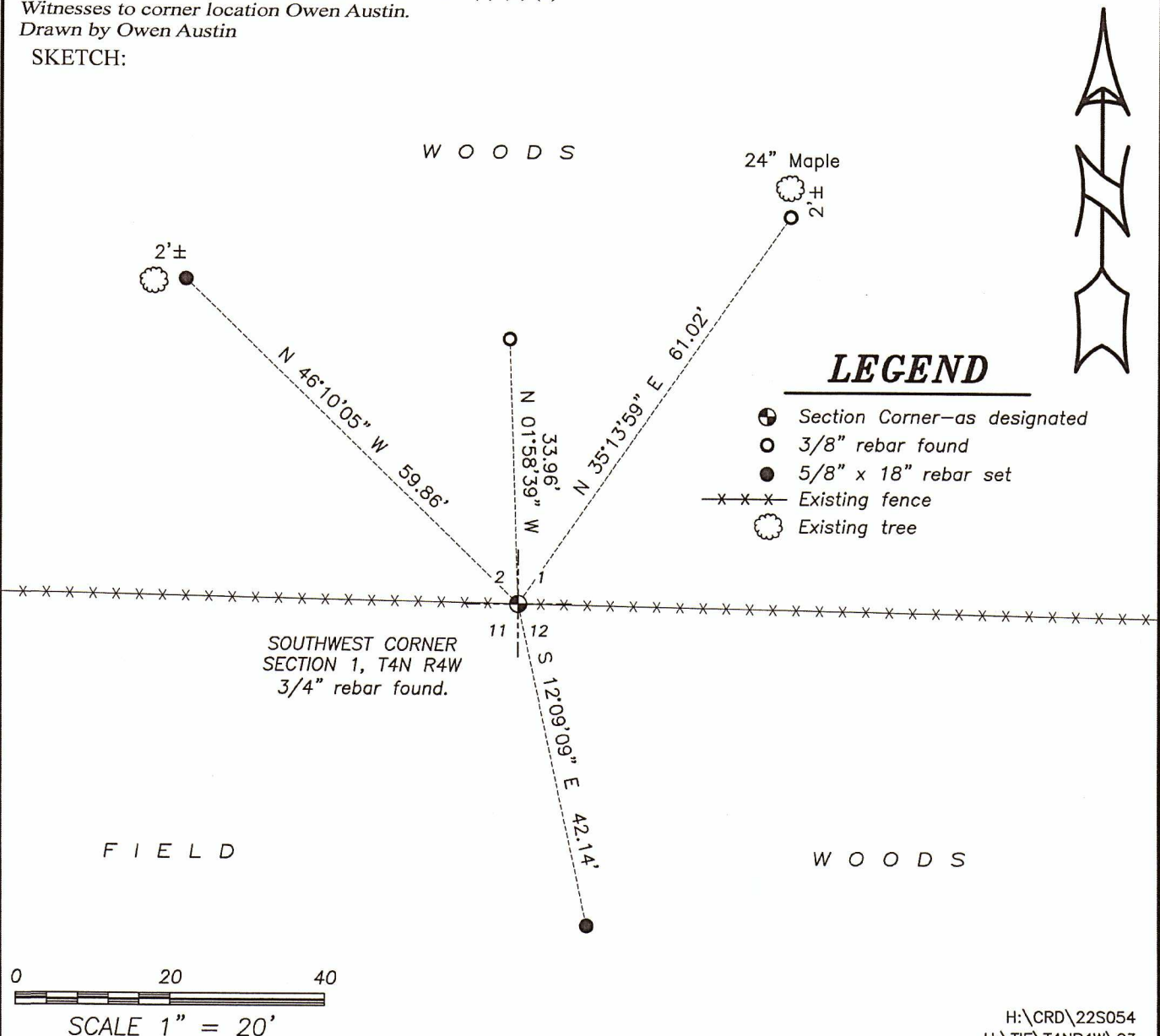
I found a 3/4" Rebar and two witness corners Larry set. I set three witness corners after I verified the Monument's location with G.P.S. and E.D.M. methods.

DESCRIPTION OF CORNER AND WITNESS MONUMENTS, references and accessories used to perpetuate the original or re-established location of this corner. (c) (d) (e)

Witnesses to corner location Owen Austin.

Drawn by Owen Austin

SKETCH:

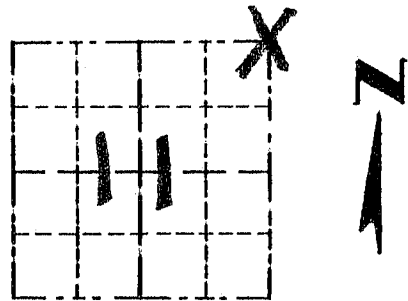


Survey Monument Record

TYPE OF MONUMENT 3/4" X 24" IRON BAR
SET WITH GRANT COUNTY CAP

CORNER NO. 23
 SECTION 11
 TOWN 4N
 RANGE 4W

FIELD BOOK: 96-04
 PAGE 15



LOCATION
 (Indicated by "X")

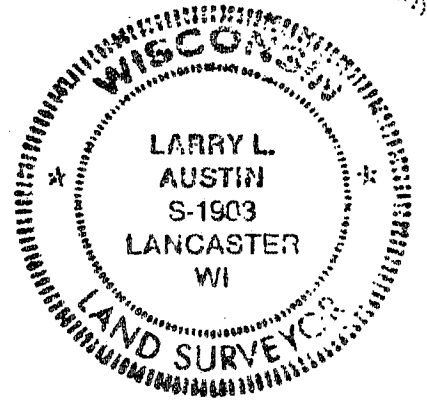
BASIS FOR MONUMENT LOCATION

(Use reverse side if necessary)

Show info such as: History of corner, with reference to Vol. and pg., dates, surveyor; exact description of monument replaced; if location computed, by taped or EDM traverse; landowner, remarks, etc.

SEAL:

NO RECORD FOUND SINCE ORIGINAL SURVEY, IN 1833. BY CLARK. I SET THE CORNER BASED ON A OCCUPATION LOCATION & VERIFIED BY E.D.M TRAVERSE OF THE AREA.



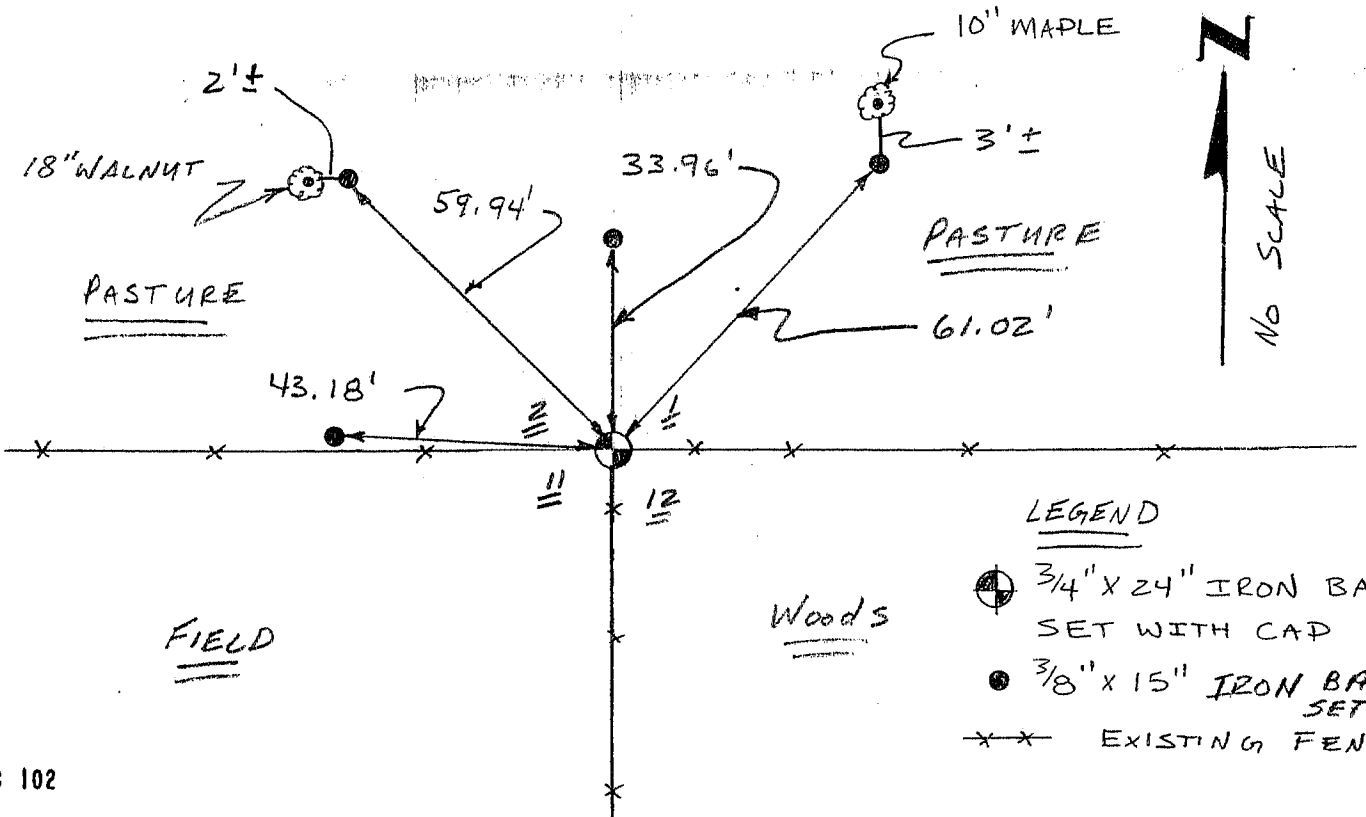
CERTIFIED CORRECT

Larry L. Austin
 Registered Land Surveyor

DATE: 7-17-96

TIE SKETCH

Show at least three (3) ties and monument



LEGEND

- 3/4" X 24" IRON BAR SET WITH CAP
- 3/8" X 15" IRON BAR SET.
- EXISTING FENCE