

GRANT COUNTY CERTIFIED LAND CORNER

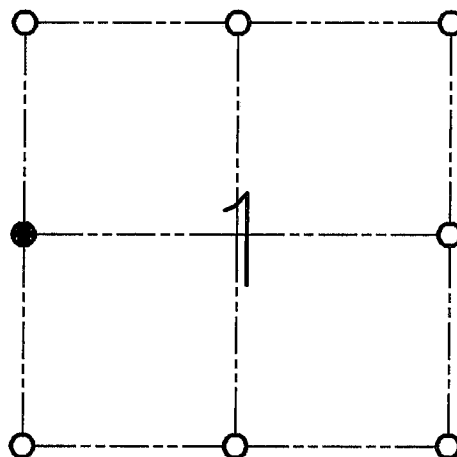
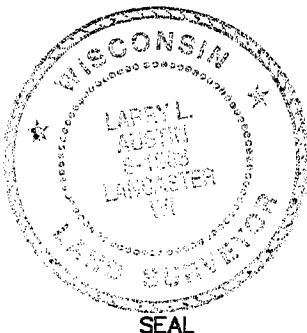
CORNER NO. 19

CERTIFICATE:

I, LARRY L. AUSTIN, DO HEREBY CERTIFY THAT ON ELEVENTH DAY OF MARCH, 1998, I FOUND OCCUPATIONAL EVIDENCE OF THE WEST 1/4 OF SECTION 1, TOWN 4 NORTH, RANGE 4 WEST, OF THE FOURTH PRINCIPAL MERIDIAN, AND I RE-ESTABLISHED SAID CORNER ACCORDING TO THE WISCONSIN STATUTES AS SHOWN AND DESCRIBED HEREON.

DATED THIS SIXTH DAY OF JANUARY, 1999

Larry L. Austin
LARRY L. AUSTIN S-1903



● = CORNER LOCATION

WEST 1/4 OF SECTION 1
T 4 N R 4 W
TOWN OF BEETOWN (E)

HISTORY OF ORIGINAL CORNER ESTABLISHMENT:

CORNER WAS SET IN 1833 BY ROBERT CLARK.

DESCRIPTION OF CORNER EVIDENCE FOUND:

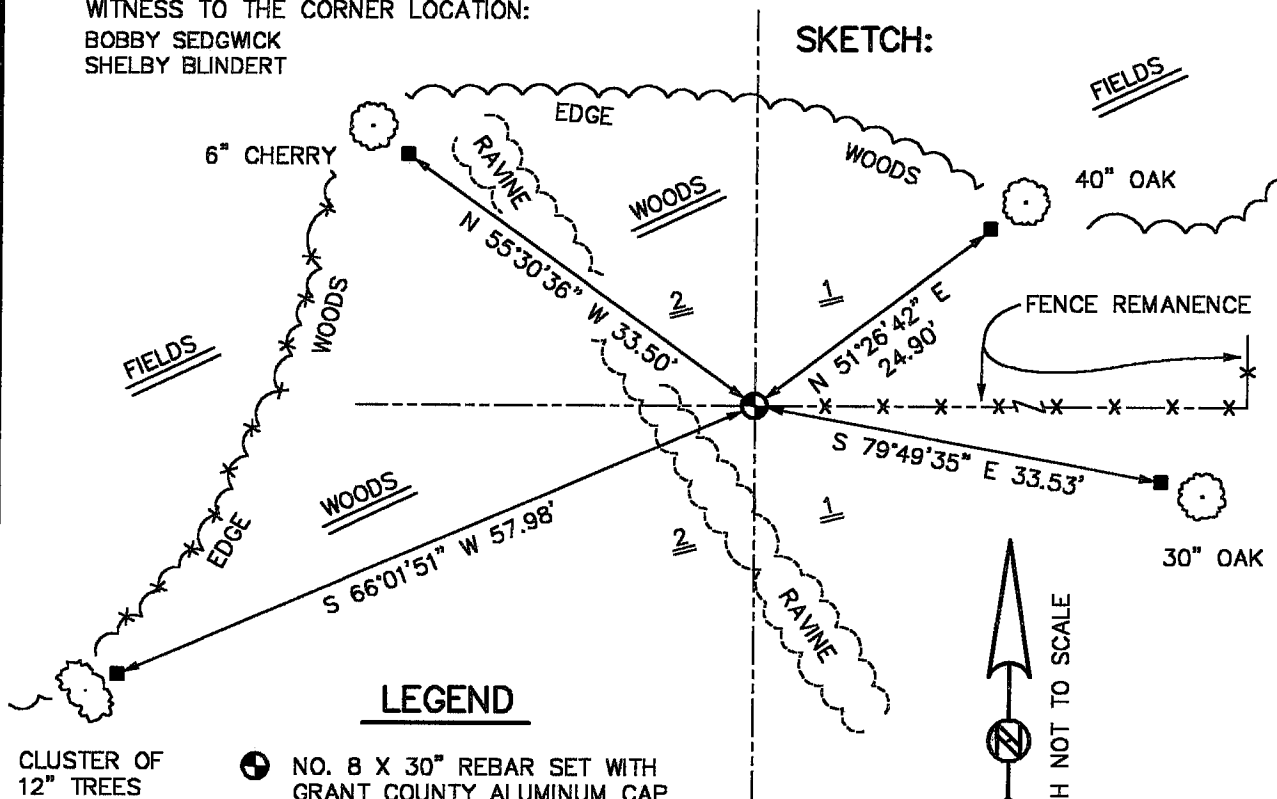
CORNER SET ONLINE WITH EXISTING FENCE TO THE EAST, AND ONLINE WITH THE SOUTHWEST CORNER AND THE NORTHWEST CORNER OF SECTION 1, T4N R4W. THIS LOCATION FIT WELL WITH AREA CORNERS. VERIFIED THIS LOCATION USING E.D.M. & G.P.S. METHODS.

DESCRIPTION OF CORNER AND WITNESS MONUMENTS, REFERENCES AND ACCESSORIES USED TO PERPETUATE THE ORIGINAL OR RE-ESTABLISHED LOCATION OF THIS CORNER:

WITNESS TO THE CORNER LOCATION:

BOBBY SEDGWICK
SHELBY BLINDERT

SKETCH:



LEGEND

CLUSTER OF 12" TREES

- NO. 8 X 30" REBAR SET WITH GRANT COUNTY ALUMINUM CAP
- NO. 4 X 16" REBAR SET