

# U.S. PUBLIC LAND SURVEY MONUMENT RECORD - GRANT COUNTY, WI

Section 3, Town 4 North Range 4 West, Town of Beetown (a)

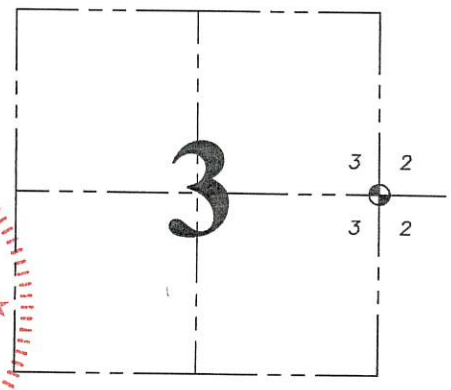
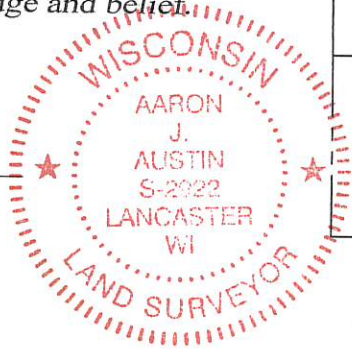
NOTE: This form is intended and designed to fulfill all requirements of the Wisconsin Administrative Code Chapter A-E 7.08, U.S. Public Land Survey Monument Record (3) (a) (b) (c) (d) (e) (f) (g) (h) (i).

**CERTIFICATE: (i)**

I, Aaron J. Austin, Wisconsin Professional Land Surveyor, do hereby certify that the corner location on this record was determined by me and/or under my direct supervision and that this U.S. Public Land Survey Monument Record is correct and complete to the best of my knowledge and belief.

Dated this 1st day of March, 2018.

*Aaron J. Austin*  
Aaron J. Austin, S-2922



⊕ = CORNER LOCATION

**HISTORY OF CORNER ESTABLISHMENT:**

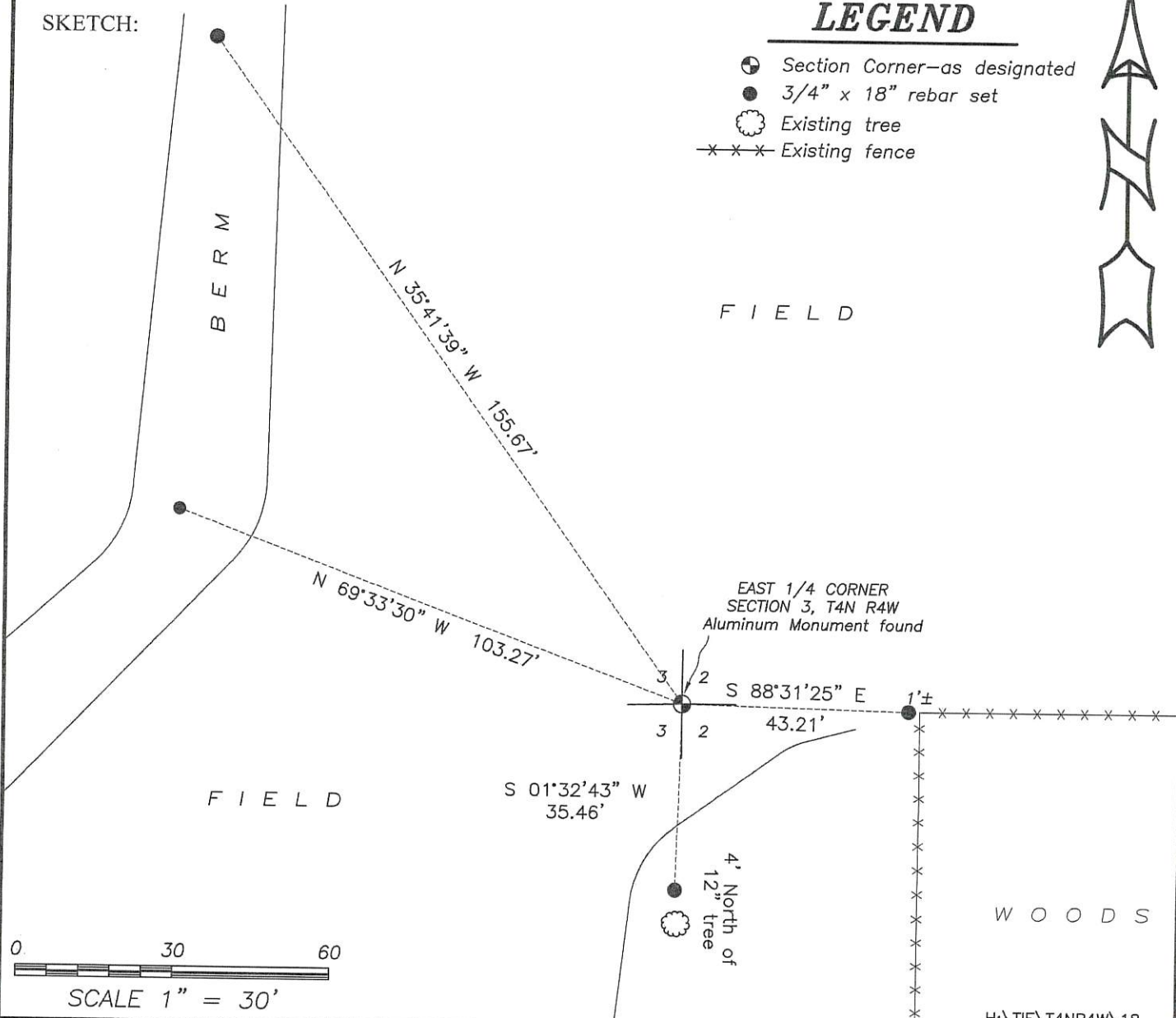
Robert Clark set the original corner in 1832.  
Larry Austin reset the corner and prepared a Survey Monument Record dated 12-30-1993.

**DESCRIPTION OF CORNER EVIDENCE FOUND: (b) (f) (g) (h)**

I found the Aluminum Monument set by Larry Austin. I set four new witness corners after I verified the monument's location with G.P.S. and E.D.M. methods.

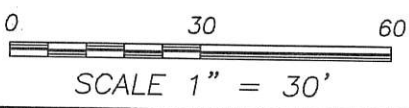
**DESCRIPTION OF CORNER AND WITNESS MONUMENTS**, references and accessories used to perpetuate the original or re-established location of this corner. (c) (d) (e)  
Witnesses to corner location Shane Austin. Drawn by Owen Austin.

**SKETCH:**



**LEGEND**

- ⊕ Section Corner—as designated
- 3/4" x 18" rebar set
- ⊙ Existing tree
- \*\*\* Existing fence



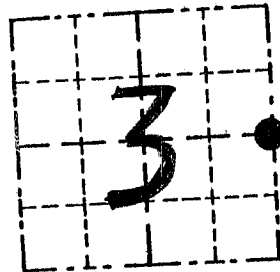
# GRANT COUNTY

## Survey Monument Record

TYPE OF MONUMENT ALUMINUM MONUMENT  
 STATE PLANE COORDINATES: N \_\_\_\_\_  
 E \_\_\_\_\_  
 ELEVATION — M.S.L. DATUM: \_\_\_\_\_  
 THETA ANGLE: \_\_\_\_\_  
 FIELD BOOK: 9321  
 PAGE \_\_\_\_\_

CORNER NO. \_\_\_\_\_  
 SECTION 3  
 TOWN 4 N  
 RANGE 4 W

E 1/4 COR - SEC 3



LOCATION  
 (Indicated by "●")

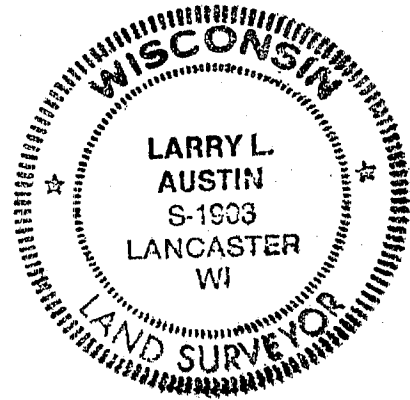
### BASIS FOR MONUMENT LOCATION

(Use reverse side if necessary)

Show info such as: History of corner, with reference to Vol. and pg., dates, surveyor; exact description of monument replaced; if location computed, by taped or EDM traverse; landowner, remarks, etc.

CORNER WAS SET AT OCCUPIED LOCATION; VERIFIED BY EDM TRAVERSE.

SEAL:



CERTIFIED CORRECT

Larry L. Austin  
 Registered Land Surveyor

DATE: 12/30/93

### TIE SKETCH

Show at least three (3) ties and monument

#### LEGEND

- ALUM. MON. SET = CORNER
- ▲ RAILROAD SPIKE SET = TIES
- 1" IRON PIPE
- ✕ EXISTING FENCE

