

# U.S. PUBLIC LAND SURVEY MONUMENT RECORD - GRANT COUNTY, WI

Section 6, Town 4 North Range 4 West, Town of Beetown (a)

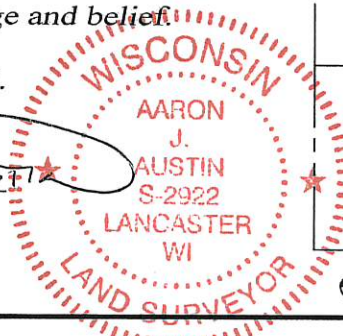
NOTE: This form is intended and designed to fulfill all requirements of the Wisconsin Administrative Code Chapter A-E 7.08, U.S. Public Land Survey Monument Record (3) (a) (b) (c) (d) (e) (f) (g) (h) (i).

**CERTIFICATE: (i)**

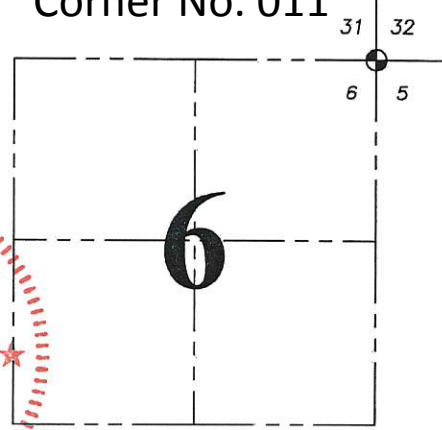
I, Aaron J. Austin, Wisconsin Professional Land Surveyor, do hereby certify that the corner location on this record was determined by me and/or under my direct supervision and that this U.S. Public Land Survey Monument Record is correct and complete to the best of my knowledge and belief.

Dated this 5th day of February, 2016.

*Aaron J. Austin*  
 Aaron J. Austin, S-2922



**Corner No. 011**



⊕ = CORNER LOCATION

**HISTORY OF CORNER ESTABLISHMENT:**

1832-Robert Clark set the original corner.  
 1844-Wiltse tied to the corner on a Survey filed in Book A, Page 185.  
 No other record was found for this corner.

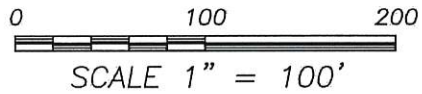
**DESCRIPTION OF CORNER EVIDENCE FOUND: (b) (f) (g) (h)**

I reset the corner based upon doubling the distance from the North 1/4 corner of Section 6 and the occupied fence corner at the Northeast corner of the NW 1/4, NE 1/4. The Northing also agrees with a fence corner located 694 feet West of this retraced location and a fence corner at the occupied location of the Northeast corner of the NW 1/4, NW 1/4 of Section 5. The Easting location also agrees well with 2 of 3 angle iron posts in concrete located South of this corner. The 3rd angle iron post in concrete appears to be in the historical right of way of a former township road which ran along the East line of Section 6 before heading Northwesterly.

**DESCRIPTION OF CORNER AND WITNESS MONUMENTS, references and accessories used to perpetuate the original or re-established location of this corner. (c) (d) (e)**

Witnesses to corner location Shane Austin, Aaron Austin.

**SKETCH:**



**LEGEND**

- ⊕ Section Corner—as designated
- 1/2" x 12" rebar set
- x x x Approximate location of fence

