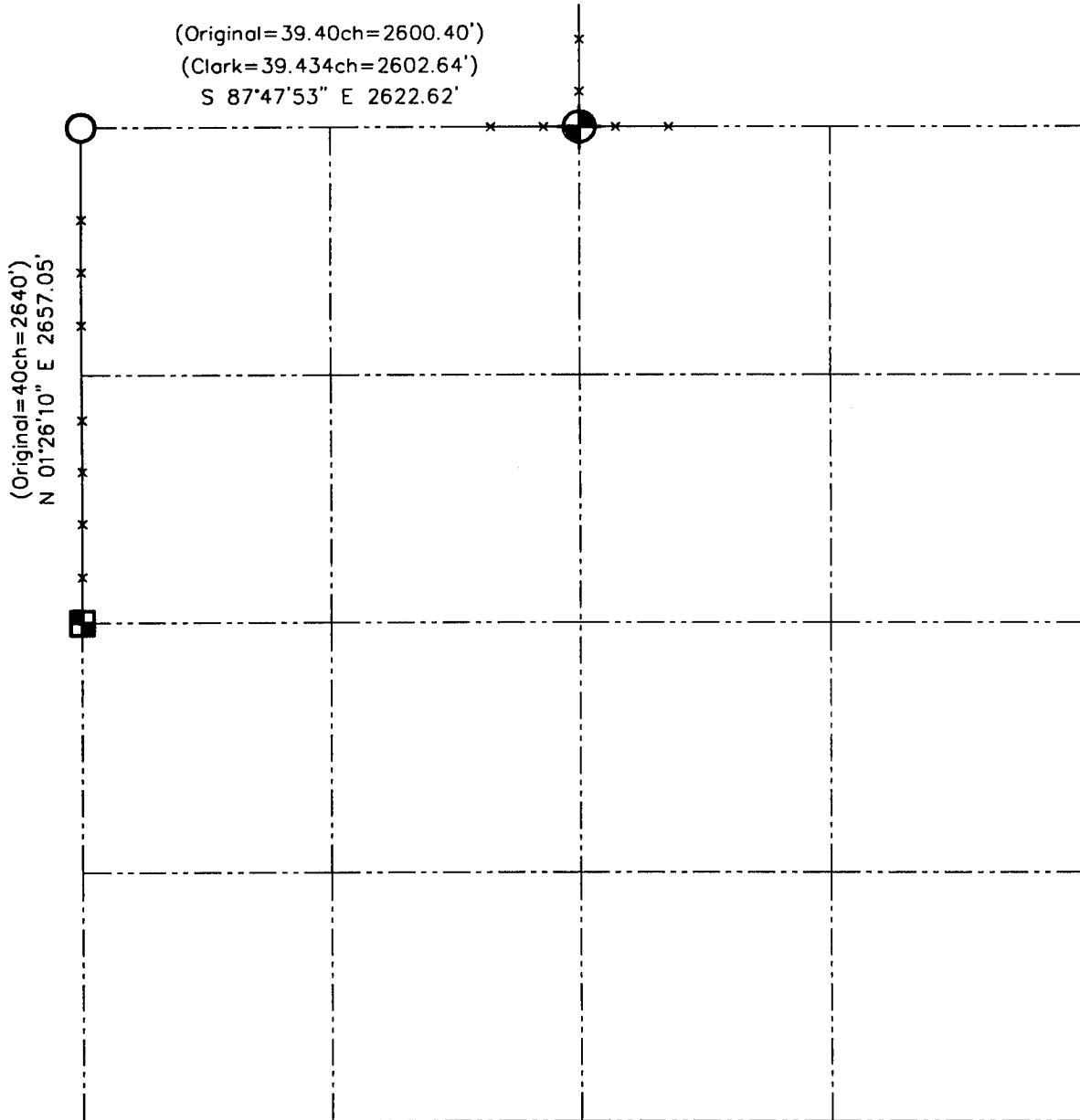





U.S. PUBLIC LAND SURVEY MONUMENT RECORD - GRANT COUNTY, WI

Summary of Section 32, Town 4 North Range 3 West, Town of South Lancaster



LEGEND

-  NUMBER 8 x 30" REBAR SET WITH GRANT COUNTY ALUMINUM CAP
-  ALUMINUM MONUMENT FOUND WITH GRANT COUNTY ALUMINUM CAP
-  NUMBER 6 IRON BAR FOUND



Relationship of all section corners to other section corners shall be shown hereon by bearing and distance or grid coordinates. Bearing reference shown below.



Bearings referenced to the North line of the Northwest 1/4 of Section 32, which is assumed to bear S 87°47'53" E.

SKETCH NOT TO SCALE

AUSTIN ENGINEERING, LLC

4211 HWY 81 EAST, LANCASTER, WI 53813
PHONE 608-723-6363 FAX 608-723-6702

FIELDBOOK: SDR33, 2103

G: \T4NR3W\32

C: \SWA\TIE\T4NR3W\32SUM

CREW: BS-SB-SA-TF

DRAWN BY: SW AUSTIN

APPROVED: LL AUSTIN

JUN 14 2001