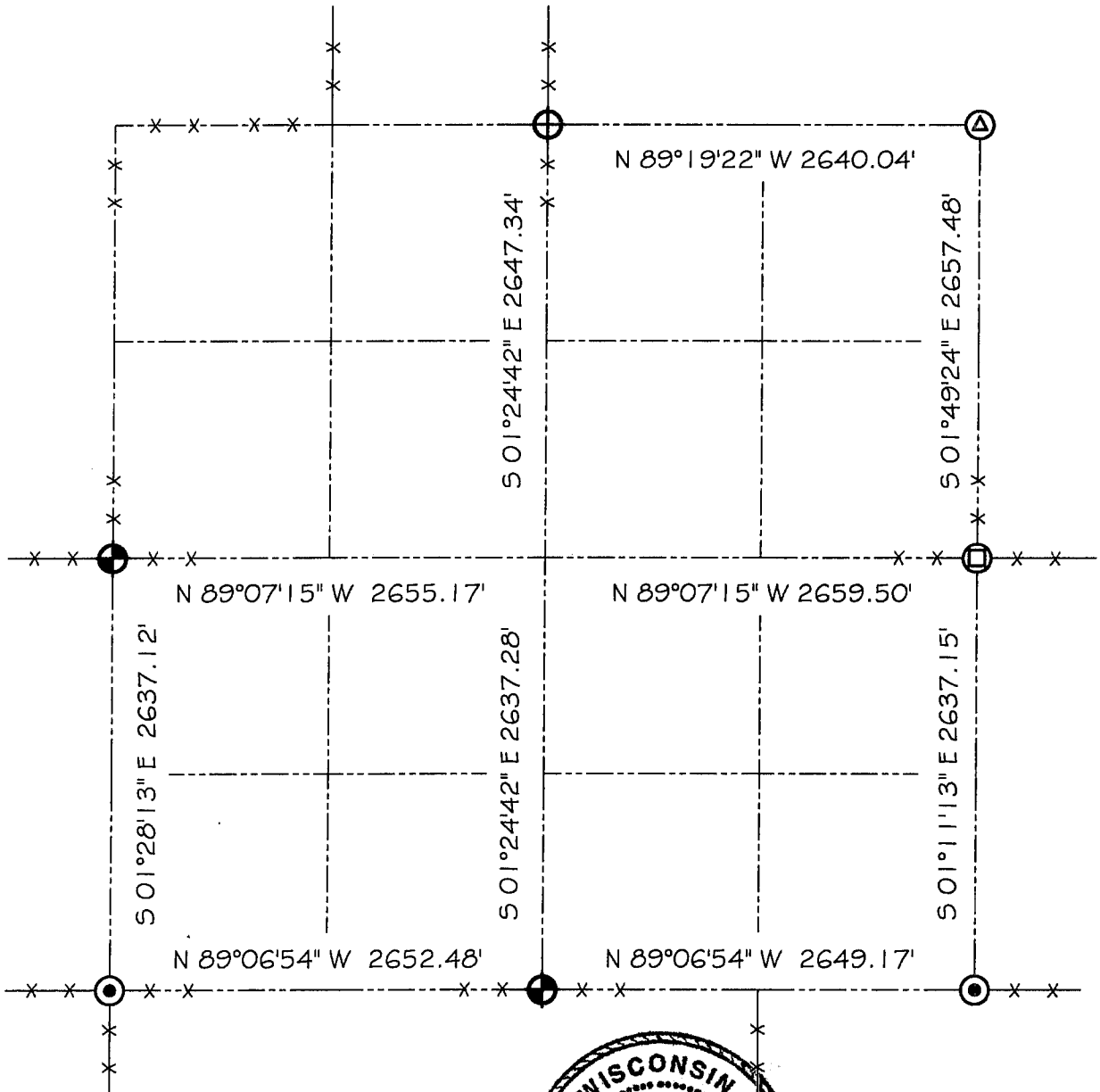







# GRANT COUNTY SECTION SUMMARY

20 - 4N - 3W  
SECTION TOWN RANGE



### LEGEND

-  NO. 8 X 30" REBAR SET WITH GRANT COUNTY ALUMINUM CAP
-  NO. 8 REBAR FOUND WITH GRANT COUNTY ALUMINUM CAP
-  1/4" HOLE PLACED IN THE BASE OF IRON POST IN CONCRETE
-  NO. 10 REBAR FOUND
-  NO. 7 REBAR FOUND

### NOTE:

Relationships of all section corners to other section corners shall be shown hereon by bearing and distance or grid coordinates  
Show or describe bearing reference



Bearings referenced to the East line of the Northeast Quarter of Section 20, which is assumed to bear S 01°49'24" E.