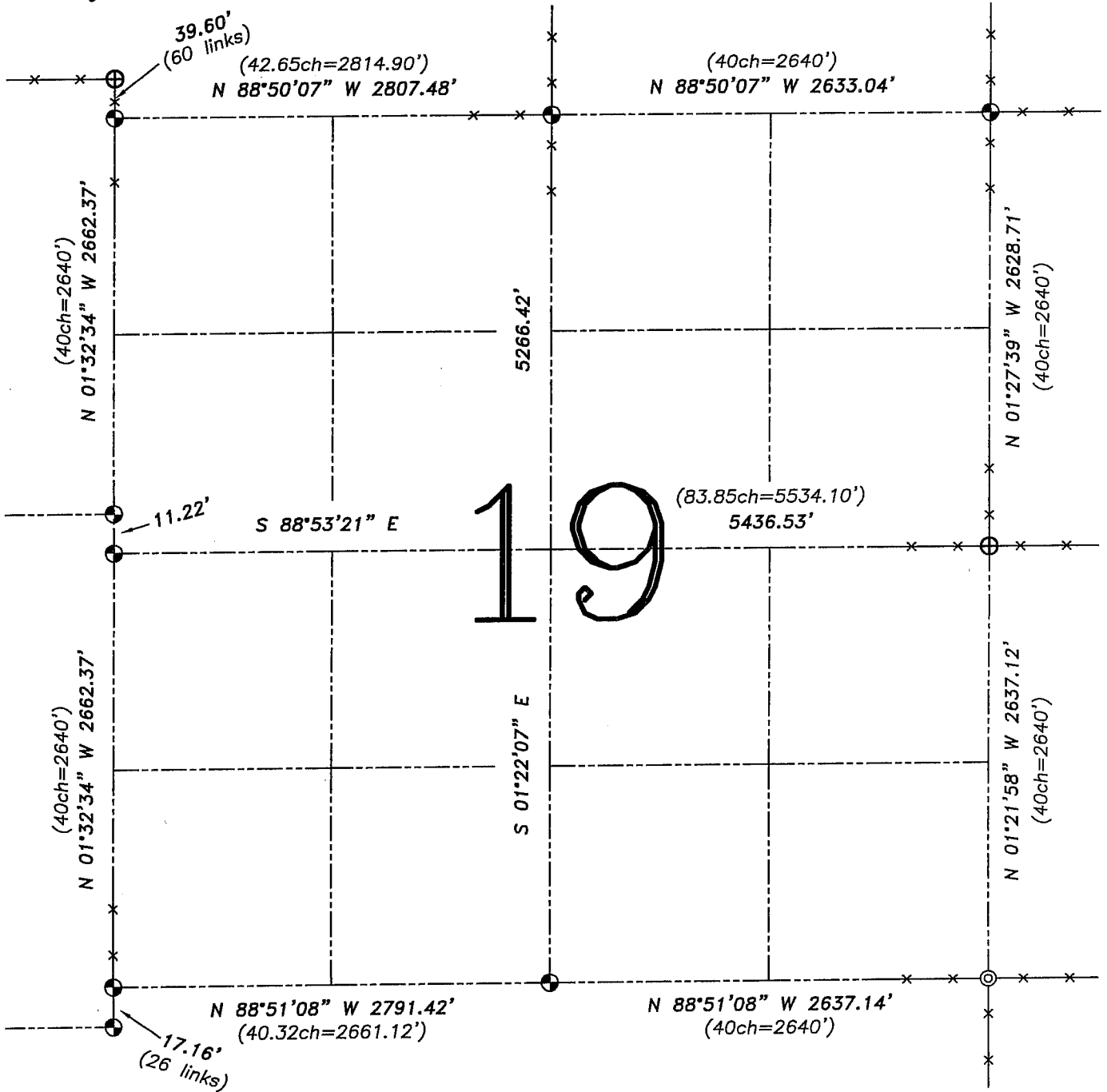


U.S. PUBLIC LAND SURVEY MONUMENT RECORD – GRANT COUNTY, WI

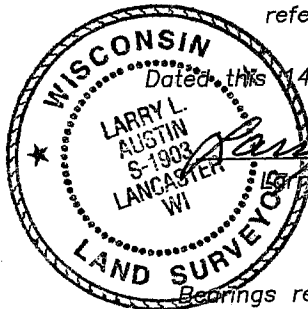
Summary of Section 19, Town 4 North, Range 3 West, Town of South Lancaster



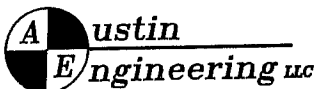
LEGEND

- ⊕ No. 8 rebar found with Grant County Aluminum Cap
- ⊙ No. 8 x 30" rebar set with Grant County Aluminum Cap – wt=2.67#/l.f.
- ⊙ Drill hole found
- () Recorded as
- x— Approximate location of existing fence

Relationship of all section corners to other section corners shall be shown hereon by bearing and distance or grid coordinates. Bearing reference shown below.



Bearings referenced to the East-West Quarter line of this Section, which is assumed to bear S 88°53'21" E.



4211 HWY 81 E, LANCASTER, WI 53813
PHONE 608-723-6363 FAX 608-723-6702

JOB NUMBER 04S249
FIELDBOOK: TSDR, 2417
G:\T4NR3W\17
H:\TIE\T4NR3W\19SUM

DRAWN BY: SW AUSTIN
APPROVED: LL AUSTIN

SKETCH NOT TO SCALE