

REMON

43133

GRANT COUNTY U.S. PUBLIC LAND SURVEY MONUMENT RECORD

INSTRUCTIONS: THIS RECORD SHALL SHOW THE LOCATION OF THE CORNER AND SHALL INCLUDE ALL OF THE FOLLOWING ELEMENTS (A THROUGH I).

(A) IDENTIFY THE CORNER AS REFERENCED TO THE U.S. PUBLIC LAND SURVEY SYSTEM

■ = CORNER MONUMENT RESTORED

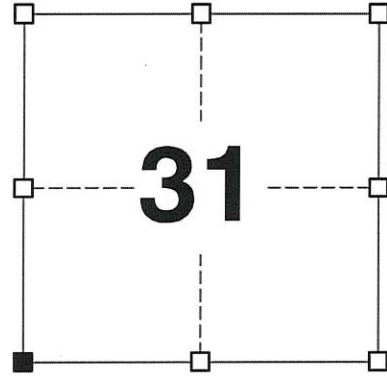
WITNESSES TO CORNER LOCATION:
JAY P. ADAMS

GEOGRAPHIC COORDINATES,
NAD 83 (2011) ADJUSTMENT:

LATITUDE: 42° 46' 13.26125"
LONGITUDE: 90° 46' 51.28253"

WISCONSIN COORDINATE REFERENCE SYSTEM (WISCRS),
GRANT COUNTY, NAD 83 (2011) ADJUSTMENT:

NORTHING: 495,350.16
EASTING: 800,125.67



SECTION 31
TOWNSHIP 4 NORTH, RANGE 3 WEST
TOWN OF SOUTH LANCASTER

(B) DESCRIBE ANY RECORD EVIDENCE, MONUMENT EVIDENCE, OCCUPATIONAL EVIDENCE, TESTIMONIAL EVIDENCE OR ANY OTHER MATERIAL EVIDENCE YOU CONSIDERED, AND WHETHER THE MONUMENT WAS FOUND OR PLACED.

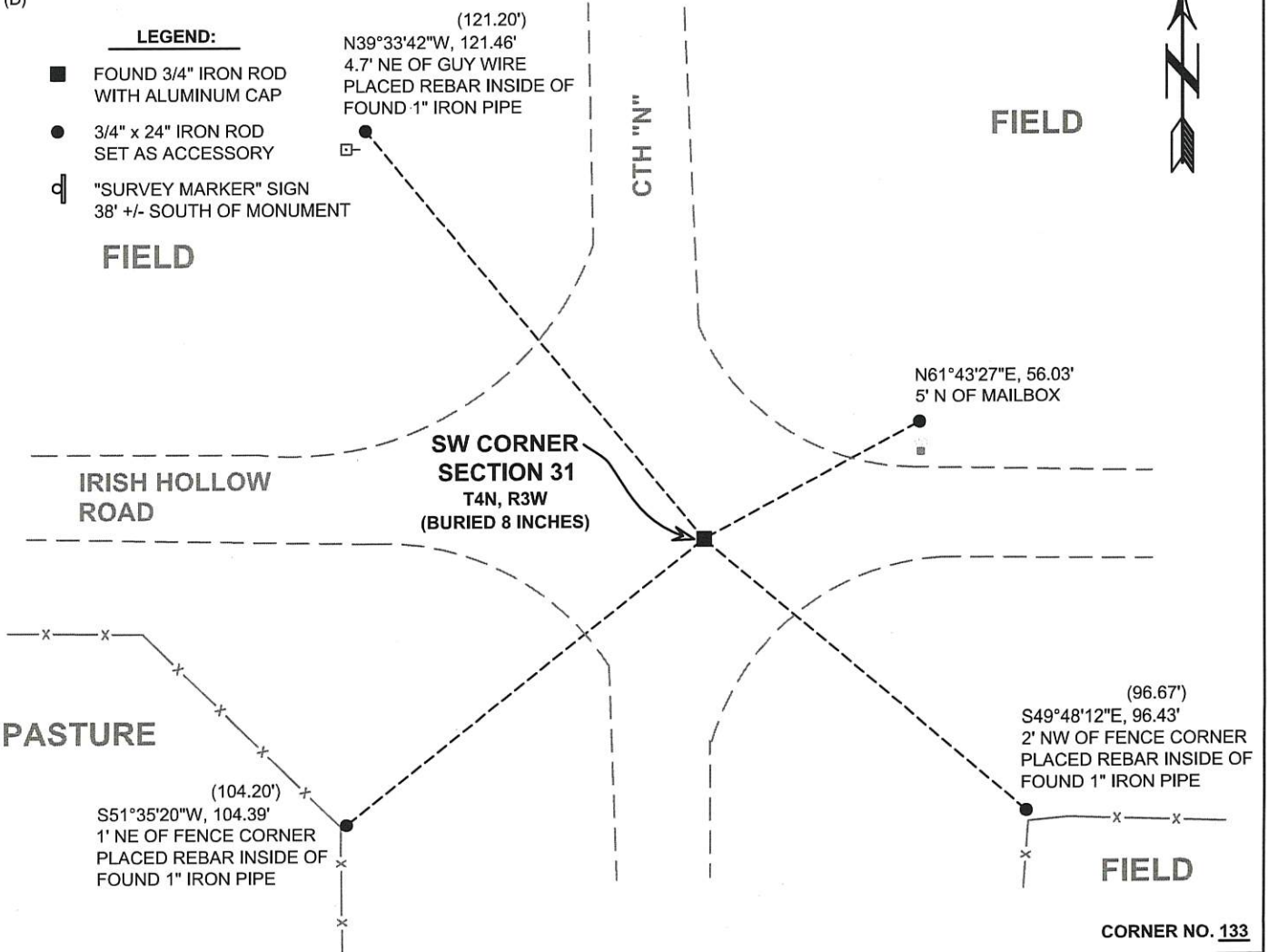
I COULD FIND NO MONUMENTS OR BEARING TREES FROM THE ORIGINAL GOVERNMENT SURVEY. I RECOVERED THE #8 REBAR WITH GRANT COUNTY ALUMINUM CAP REFERENCED BY LARRY AND AARON AUSTIN. THIS LOCATION WAS ACCEPTED AS THE BEST AVAILABLE EVIDENCE OF THE ORIGINAL GOVERNMENT CORNER AND THE MONUMENT WAS LEFT IN PLACE BECAUSE OF EXCEPTIONAL STABILITY.

(C) IN THE PLAN VIEW DRAWING BELOW, PROVIDE REFERENCE TIES TO AT LEAST 4 WITNESS MONUMENTS. WITNESS MONUMENTS SHALL BE MADE OF CONCRETE, NATURAL STONE, IRON, BEARING TREES OR ANY OTHER EQUALLY DURABLE MATERIAL. DEPICT THE RELEVANT MONUMENTS AND REFERENCE TIES WITH SUFFICIENT DETAIL TO ENABLE ACCURATE RELOCATION OF THE CORNER IF THE CORNER MONUMENT IS DISTURBED.

(D)

LEGEND:

- FOUND 3/4" IRON ROD WITH ALUMINUM CAP
- 3/4" x 24" IRON ROD SET AS ACCESSORY
- "SURVEY MARKER" SIGN 38' +/- SOUTH OF MONUMENT



(E) DESCRIBE ANY MATERIAL DISCREPANCY BETWEEN THE LOCATION OF THE CORNER AS RESTORED OR REESTABLISHED AND THE LOCATION OF THAT CORNER AS PREVIOUSLY RESTORED OR REESTABLISHED BY DISTANCE AND DIRECTION. SHOW THE DISCREPANCY ON THE PLAN VIEW DRAWING UNDER (D), ABOVE. SHOW THE DISTANCES BETWEEN THE CORNER AS PREVIOUSLY RESTORED OR REESTABLISHED AND (1) THE CORNER AS RESTORED OR REESTABLISHED, AND (2) TO AT LEAST 2 OF THE WITNESS MONUMENTS SHOWN ON THE DRAWING IN (D) ABOVE.

N/A

(F) WAS THE CORNER RESTORED THROUGH ACCEPTANCE OF (1) AN OBLITERATED EVIDENCE LOCATION, OR (2) A FOUND PERPETUATED LOCATION?

(2) A FOUND PERPETUATED LOCATION.

(G&H) WAS THE CORNER REESTABLISHED THROUGH LOST CORNER PROPORTIONATE METHODS? IF SO, SHOW THE METHOD, INCLUDING THE DIRECTIONS AND DISTANCES TO OTHER PUBLIC LAND SURVEY CORNERS USED AS EVIDENCE OR USED FOR PROPORTIONING IN DETERMINING THE CORNER LOCATION.

N/A

CORNER HISTORY

THE ORIGINAL GOVERNMENT CORNER WAS ESTABLISHED BY SYLVESTER SIBLEY IN THE SECOND QUARTER OF 1832.

IN A SURVEY DATED 12 JANUARY 1877, JOEL BARBER FOUND ONE BEARING TREE AND TOOK A NEW ONE.

IN A SURVEY DATED 26 JANUARY 1880, JOEL BARBER FOUND ONE BEARING TREE AND TOOK A NEW ONE.

IN A SURVEY DATED 15 DECEMBER 1899 CHARLES SAMPSON FOUND AN ORIGINAL BEARING TREE AS WELL AS BARBER'S BEARING TREE AND HE SET A STONE OVER A DRILLED HOLE FILLED WITH LIME.

IN PLATS OF SURVEY DATED 23 APRIL 1995 AND TIE SHEET DATED 22 APRIL 1995, LARRY AUSTIN SETS A 3/4"x24" IRON ROD AT THE CORNER.

IN NUMEROUS PLATS OF SURVEY LARRY AUSTIN REPORTED FINDING A 3/4" IRON ROD AT THE CORNER UNTIL HE REPLACED SAID MONUMENT WITH A #8 x 30" REBAR WITH GRANT COUNTY ALUMINUM CAP.

IN A PLAT OF SURVEY DATED 17 DECEMBER 2013, AARON AUSTIN FOUND A #8 REBAR WITH ALUMINUM CAP.

AFFIX LAND SURVEYOR SEAL

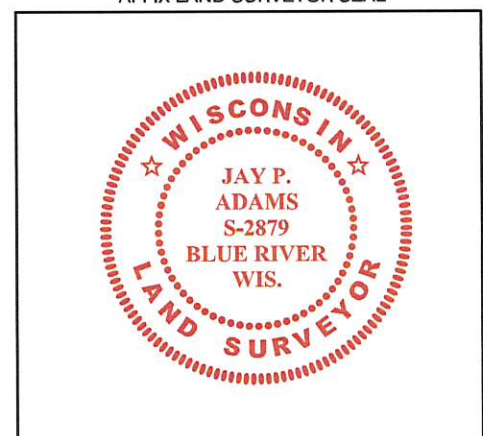
(I) I, JAY P. ADAMS, P.L.S. - 2879, CERTIFY THAT THE CORNER LOCATION SHOWN ON THIS RECORD WAS DETERMINED BY ME OR UNDER MY DIRECTION AND CONTROL AND THAT THIS U.S. PUBLIC LAND SURVEY MONUMENT RECORD IS CORRECT AND COMPLETE TO THE BEST OF MY KNOWLEDGE AND BELIEF.



SIGNATURE

21 FEBRUARY 2018

DATE



Survey Monument Record

TYPE OF MONUMENT 3/4" x 24" IRON BAR SET

STATE PLANE COORDINATES: N _____
E _____

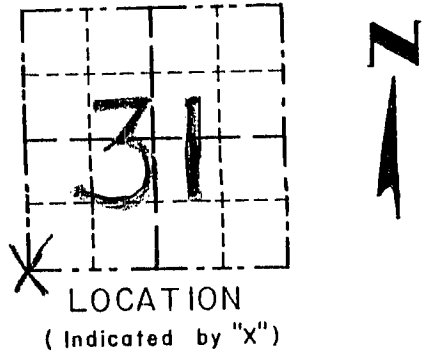
ELEVATION — M.S.L. DATUM: _____

THETA ANGLE: _____

FIELD BOOK: 95-01

PAGE 7

CORNER NO. 133
SECTION 31
TOWN 1 N
RANGE 3 W



BASIS FOR MONUMENT LOCATION

(Use reverse side if necessary)

Show info such as: History of corner, with reference to Vol. and pg., dates, surveyor; exact description of monument replaced; if location computed, by taped or EDM traverse; landowner, remarks, etc.

SEAL:

CORNER ORIGINALLY SET IN 1832 BY SIBLEY; THE EXTERIOR BOUNDARIES OF SECTION 31 WERE RESURVEYED IN 1899 BY CHARLES SAMPSON; CORNER WAS MEASURED TO IN 1876 BY JOEL BARBER SURVEY; I PROPORTIONED THE CORNER IN N-S & E-W & VERIFIED THIS LOCATION BY EDM TRAVERSE.

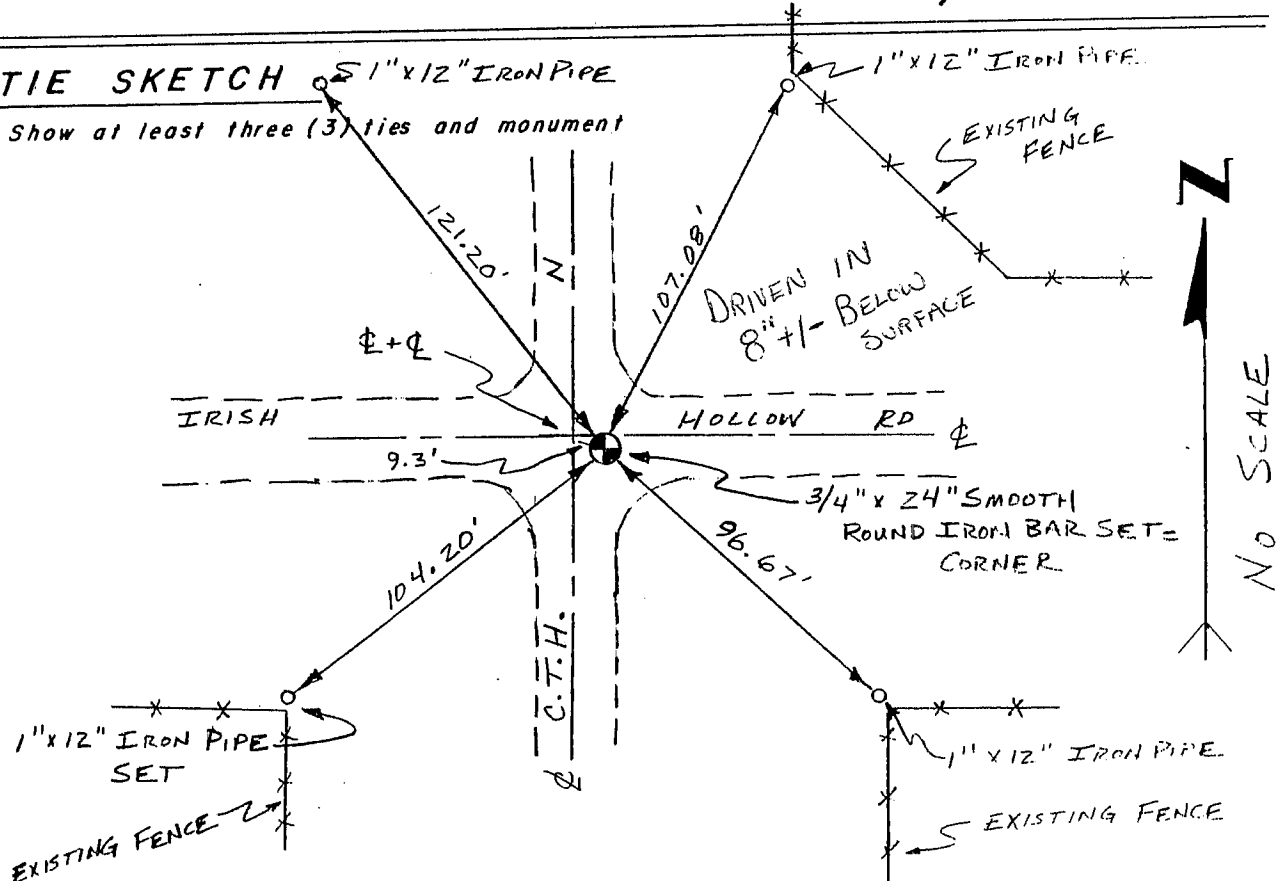
CERTIFIED CORRECT

Henry L. Quat
Registered Land Surveyor

DATE: 4/22/95

TIE SKETCH

Show at least three (3) ties and monument



NO SCALE