

REMON

43131

GRANT COUNTY U.S. PUBLIC LAND SURVEY MONUMENT RECORD

INSTRUCTIONS: THIS RECORD SHALL SHOW THE LOCATION OF THE CORNER AND SHALL INCLUDE ALL OF THE FOLLOWING ELEMENTS (A THROUGH I).

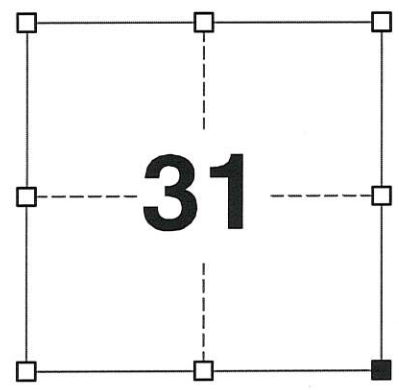
(A) IDENTIFY THE CORNER AS REFERENCED TO THE U.S. PUBLIC LAND SURVEY SYSTEM

■ = CORNER MONUMENT RESTORED

WITNESSES TO CORNER LOCATION:
JAY P. ADAMS

GEOGRAPHIC COORDINATES,
NAD 83 (2011) ADJUSTMENT:
LATITUDE: 42° 46' 12.69151"
LONGITUDE: 90° 45' 40.13966"

WISCONSIN COORDINATE REFERENCE SYSTEM (WISCRS),
GRANT COUNTY, NAD 83 (2011) ADJUSTMENT:
NORTHING: 495,294.30
EASTING: 805,432.28



SECTION 31
TOWNSHIP 4 NORTH, RANGE 3 WEST
TOWN OF SOUTH LANCASTER

(B) DESCRIBE ANY RECORD EVIDENCE, MONUMENT EVIDENCE, OCCUPATIONAL EVIDENCE, TESTIMONIAL EVIDENCE OR ANY OTHER MATERIAL EVIDENCE YOU CONSIDERED, AND WHETHER THE MONUMENT WAS FOUND OR PLACED.

I COULD FIND NO MONUMENTS OR BEARING TREES FROM THE ORIGINAL GOVERNMENT SURVEY OR SAMPSON'S SUBSEQUENT RESURVEY. I RECOVERED THE 3/4" REBAR SET BY LARRY AUSTIN 8 INCHES UNDER THE ROADWAY SURFACE. THIS LOCATION WAS ACCEPTED AS THE BEST AVAILABLE EVIDENCE OF THE ORIGINAL GOVERNMENT CORNER AND THE MONUMENT WAS LEFT IN PLACE BECAUSE OF EXCEPTIONAL STABILITY.

(C) IN THE PLAN VIEW DRAWING BELOW, PROVIDE REFERENCE TIES TO AT LEAST 4 WITNESS MONUMENTS. WITNESS MONUMENTS SHALL BE MADE OF CONCRETE, NATURAL STONE, IRON, BEARING TREES OR ANY OTHER EQUALLY DURABLE MATERIAL. DEPICT THE RELEVANT MONUMENTS AND REFERENCE TIES WITH SUFFICIENT DETAIL TO ENABLE ACCURATE RELOCATION OF THE CORNER IF THE CORNER MONUMENT IS DISTURBED.

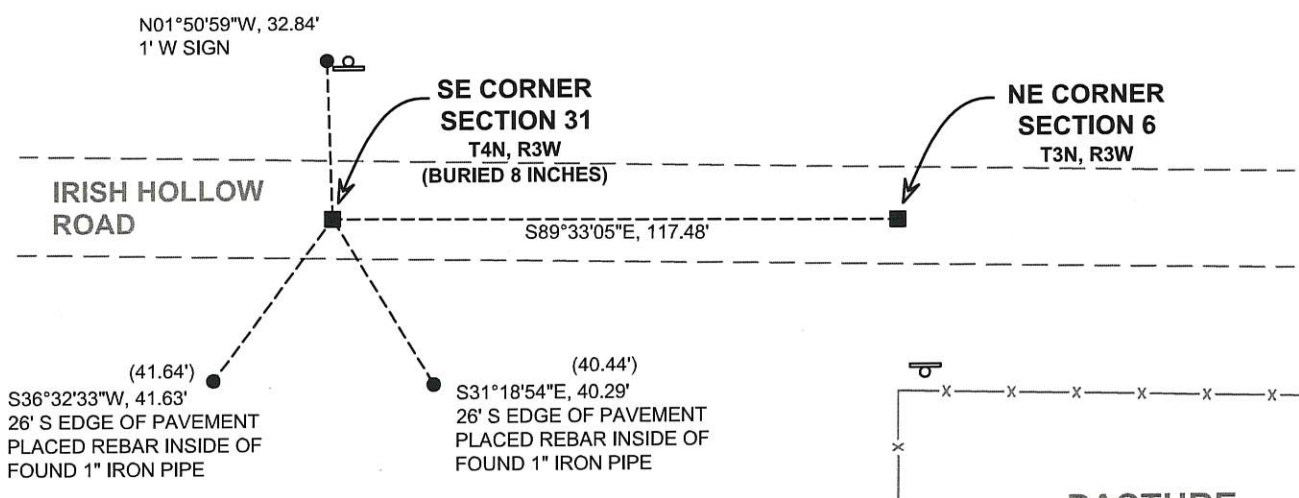
(D)

LEGEND:

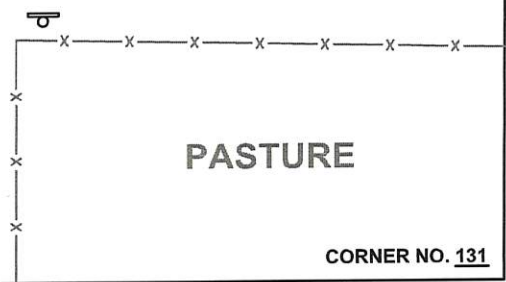
- FOUND 3/4" REBAR
- 3/4" x 24" IRON ROD SET AS ACCESSORY
- ⊥ "SURVEY MARKER" SIGN 33' +/- NORTH OF MONUMENT



FIELD



FIELD



CORNER NO. 131

(E) DESCRIBE ANY MATERIAL DISCREPANCY BETWEEN THE LOCATION OF THE CORNER AS RESTORED OR REESTABLISHED AND THE LOCATION OF THAT CORNER AS PREVIOUSLY RESTORED OR REESTABLISHED BY DISTANCE AND DIRECTION. SHOW THE DISCREPANCY ON THE PLAN VIEW DRAWING UNDER (D), ABOVE. SHOW THE DISTANCES BETWEEN THE CORNER AS PREVIOUSLY RESTORED OR REESTABLISHED AND (1) THE CORNER AS RESTORED OR REESTABLISHED, AND (2) TO AT LEAST 2 OF THE WITNESS MONUMENTS SHOWN ON THE DRAWING IN (D) ABOVE.

N/A

(F) WAS THE CORNER RESTORED THROUGH ACCEPTANCE OF (1) AN OBLITERATED EVIDENCE LOCATION, OR (2) A FOUND PERPETUATED LOCATION?

(2) A FOUND PERPETUATED LOCATION.

(G&H) WAS THE CORNER REESTABLISHED THROUGH LOST CORNER PROPORTIONATE METHODS? IF SO, SHOW THE METHOD, INCLUDING THE DIRECTIONS AND DISTANCES TO OTHER PUBLIC LAND SURVEY CORNERS USED AS EVIDENCE OR USED FOR PROPORTIONING IN DETERMINING THE CORNER LOCATION.

N/A

CORNER HISTORY

THE ORIGINAL GOVERNMENT CORNER WAS ESTABLISHED BY SYLVESTER SIBLEY IN THE SECOND QUARTER OF 1832.

IN A SURVEY DATED 18 OCTOBER 1899, CHARLES SAMPSON PLACED A STONE 4"x11"x22" OVER HOLE FILLED WITH LIME. IN A SURVEY DATED 15 DECEMBER 1899, SAMPSON WAS AGAIN AT THE CORNER.

IN A TIE SHEET DATED 22 APRIL 1995 AND A PLAT OF SURVEY DATED 23 APRIL 1995, LARRY AUSTIN REPORTED SETTING A 3/4"x24" IRON ROD AT THE CORNER.

IN A PLAT OF SURVEY LAST REVISED 5 MARCH 1999, LARRY AUSTIN REPORTED FINDING A 3/4" IRON ROD AT THE CORNER.

IN A PLAT OF SURVEY LAST REVISED 19 NOVEMBER 2013, AARON AUSTIN REPORTED FINDING A #6 REBAR AT THE CORNER.

AFFIX LAND SURVEYOR SEAL

(I) I, JAY P. ADAMS, P.L.S. - 2879, CERTIFY THAT THE CORNER LOCATION SHOWN ON THIS RECORD WAS DETERMINED BY ME OR UNDER MY DIRECTION AND CONTROL AND THAT THIS U.S. PUBLIC LAND SURVEY MONUMENT RECORD IS CORRECT AND COMPLETE TO THE BEST OF MY KNOWLEDGE AND BELIEF.



SIGNATURE

20 FEBRUARY 2018

DATE



REC'D JAN 29 19 5

GRANT COUNTY

Survey Monument Record

TYPE OF MONUMENT 3/4" x 24" IRON BAR

STATE PLANE COORDINATES: N _____
E _____

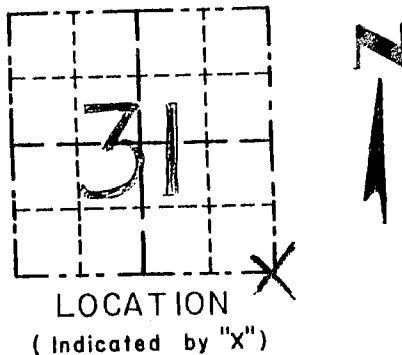
ELEVATION — M.S.L. DATUM: _____

THETA ANGLE: _____

FIELD BOOK: 9504

PAGE 6

CORNER NO. 131
SECTION 31
TOWN 411
RANGE 3 W



BASIS FOR MONUMENT LOCATION

(Use reverse side if necessary)

Show info such as: History of corner, with reference to Vol. and pg., dates, surveyor; exact description of monument replaced; if location computed, by taped or EDM traverse; landowner, remarks, etc.

SEAL:

CORNER ORIGINALLY SET IN 1832 BY SIBLEY ; EXTERIOR BOUNDARIES OF THE SECTION RESURVEYED IN 1899 BY CHARLES SAMPSON. I RE-ESTABLISHED THE CORNER BASED ON OCCUPATION TO THE SOUTH & AT THE OFFSET DISTANCE RECORDED FOR SECTION 6, T3N, R3W. THIS LOCATION FITS WELL WITH OTHER CORNERS; VERIFIED ITS LOCATION BY EDM TRAVERSE OF THE AREA.

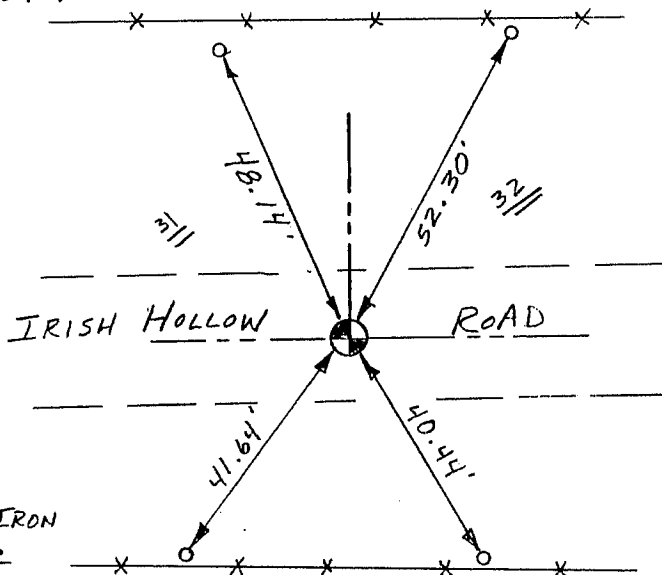
CERTIFIED CORRECT

Henry R. East
Registered Land Surveyor

DATE: 4/22/95

TIE SKETCH

Show at least three (3) ties and monument



NO SCALE

LEGEND

● 3/4" x 24" SMOOTH IRON BAR SET = CORNER

○ 1" x 12" IRON PIPE SET = TIES

* * * EXISTING FENCE