

REMON
43130

GRANT COUNTY U.S. PUBLIC LAND SURVEY MONUMENT RECORD

INSTRUCTIONS: THIS RECORD SHALL SHOW THE LOCATION OF THE CORNER AND SHALL INCLUDE ALL OF THE FOLLOWING ELEMENTS (A THROUGH I).

(A) IDENTIFY THE CORNER AS REFERENCED TO THE U.S. PUBLIC LAND SURVEY SYSTEM

■ = CORNER MONUMENT RESTORED

WITNESSES TO CORNER LOCATION:

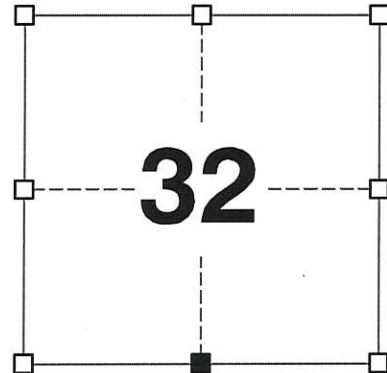
JAY P. ADAMS
STEVEN A. ALT

GEOGRAPHIC COORDINATES,
NAD 83 (2011) ADJUSTMENT:

LATITUDE: 42° 46' 12.47308"
LONGITUDE: 90° 45' 04.63272"

WISCONSIN COORDINATE REFERENCE SYSTEM (WISCRS),
GRANT COUNTY, NAD 83 (2011) ADJUSTMENT:

NORTHING: 495,273.56
EASTING: 808,080.78



SECTION 32
TOWNSHIP 4 NORTH, RANGE 3 WEST
TOWN OF SOUTH LANCASTER

(B) DESCRIBE ANY RECORD EVIDENCE, MONUMENT EVIDENCE, OCCUPATIONAL EVIDENCE, TESTIMONIAL EVIDENCE OR ANY OTHER MATERIAL EVIDENCE YOU CONSIDERED, AND WHETHER THE MONUMENT WAS FOUND OR PLACED.

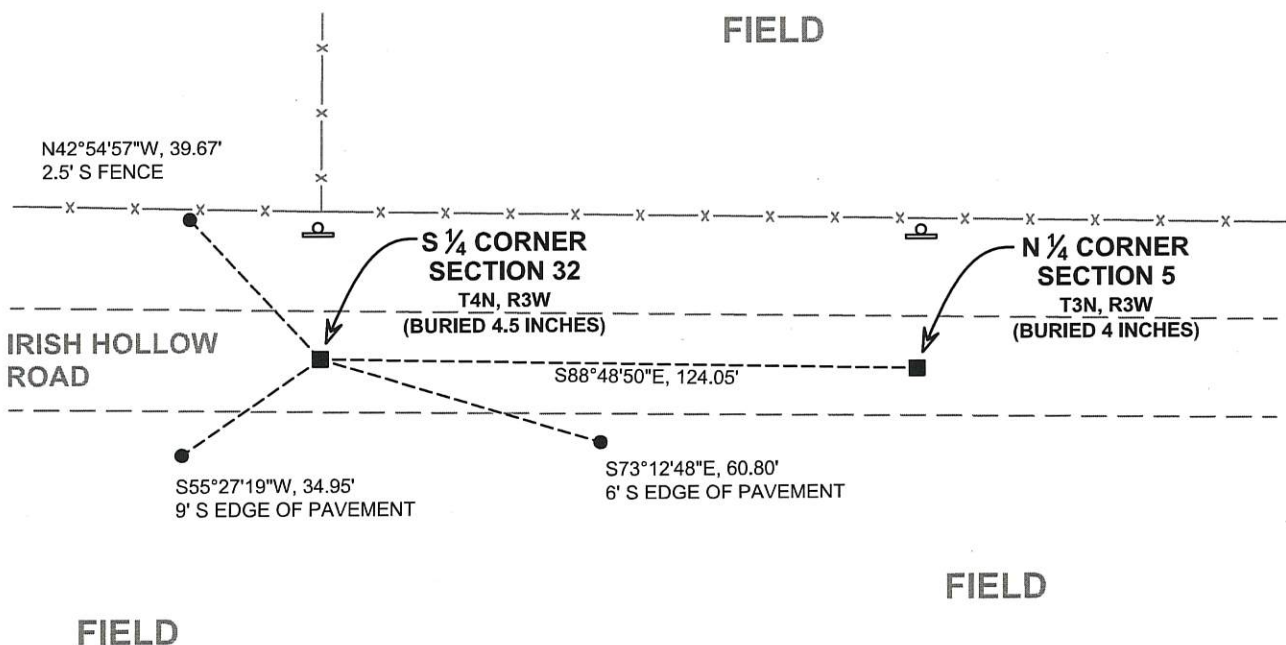
I COULD FIND NO MONUMENTS OR BEARING TREES FROM THE ORIGINAL GOVERNMENT SURVEY. I RECOVERED THE #6 REBAR WITH GRANT COUNTY ALUMINUM CAP REFERENCED BY LAROSA AND AUSTIN 4.5 INCHES UNDER THE ROADWAY SURFACE. THIS LOCATION WAS ACCEPTED AS THE BEST AVAILABLE EVIDENCE OF THE ORIGINAL GOVERNMENT CORNER AND THE MONUMENT WAS LEFT IN PLACE BECAUSE OF EXCEPTIONAL STABILITY.

(C) IN THE PLAN VIEW DRAWING BELOW, PROVIDE REFERENCE TIES TO AT LEAST 4 WITNESS MONUMENTS. WITNESS MONUMENTS SHALL BE MADE OF CONCRETE, NATURAL STONE, IRON, BEARING TREES OR ANY OTHER EQUALLY DURABLE MATERIAL. DEPICT THE RELEVANT MONUMENTS AND REFERENCE TIES WITH SUFFICIENT DETAIL TO ENABLE ACCURATE RELOCATION OF THE CORNER IF THE CORNER MONUMENT IS DISTURBED.

(D)

LEGEND:

- FOUND 3/4" REBAR WITH GRANT COUNTY ALUMINUM CAP
- 3/4" x 24" IRON ROD SET AS ACCESSORY
- d "SURVEY MARKER" SIGN 27' +/- NORTH OF MONUMENT



(E) DESCRIBE ANY MATERIAL DISCREPANCY BETWEEN THE LOCATION OF THE CORNER AS RESTORED OR REESTABLISHED AND THE LOCATION OF THAT CORNER AS PREVIOUSLY RESTORED OR REESTABLISHED BY DISTANCE AND DIRECTION. SHOW THE DISCREPANCY ON THE PLAN VIEW DRAWING UNDER (D), ABOVE. SHOW THE DISTANCES BETWEEN THE CORNER AS PREVIOUSLY RESTORED OR REESTABLISHED AND (1) THE CORNER AS RESTORED OR REESTABLISHED, AND (2) TO AT LEAST 2 OF THE WITNESS MONUMENTS SHOWN ON THE DRAWING IN (D) ABOVE.

N/A

(F) WAS THE CORNER RESTORED THROUGH ACCEPTANCE OF (1) AN OBLITERATED EVIDENCE LOCATION, OR (2) A FOUND PERPETUATED LOCATION?

(2) A FOUND PERPETUATED LOCATION.

(G&H) WAS THE CORNER REESTABLISHED THROUGH LOST CORNER PROPORTIONATE METHODS? IF SO, SHOW THE METHOD, INCLUDING THE DIRECTIONS AND DISTANCES TO OTHER PUBLIC LAND SURVEY CORNERS USED AS EVIDENCE OR USED FOR PROPORTIONING IN DETERMINING THE CORNER LOCATION.

N/A

CORNER HISTORY

THE ORIGINAL GOVERNMENT CORNER WAS ESTABLISHED BY SYLVESTER SIBLEY IN THE SECOND QUARTER OF 1832.

IN PLATS OF SURVEY DATED 18 APRIL 1996, 4 FEBRUARY 1997 AND A TIE SHEET DATED 4 FEBRUARY 1997, MICHAEL LAROSA REPORTED FINDING AN ALUMINUM CAP ON A 3/4" IRON ROD.

IN A CERTIFIED SURVEY MAP DATED 27 APRIL 1998, THOMAS BUCK REPORTED AN IRON ROD WITH ALUMINUM CAP AT THE CORNER.

IN A PLAT OF SURVEY LAST REVISED 27 MAY 2008, LARRY AUSTIN REPORTED FINDING A #6 REBAR WITH CAP.

IN A PLAT OF SURVEY LAST REVISED 19 NOVEMBER 2013, AARON AUSTIN REPORTED FINDING A #6 REBAR WITH CAP.

(I) I, JAY P. ADAMS, P.L.S. - 2879, CERTIFY THAT THE CORNER LOCATION SHOWN ON THIS RECORD WAS DETERMINED BY ME OR UNDER MY DIRECTION AND CONTROL AND THAT THIS U.S. PUBLIC LAND SURVEY MONUMENT RECORD IS CORRECT AND COMPLETE TO THE BEST OF MY KNOWLEDGE AND BELIEF.

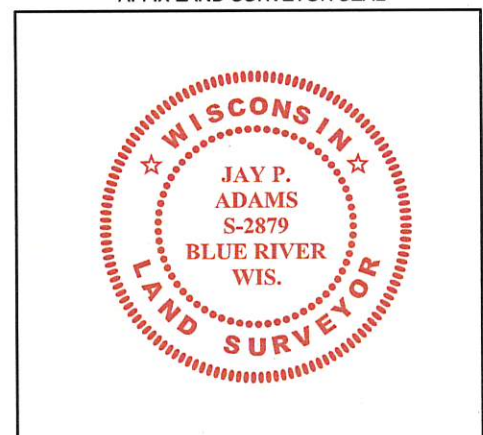


SIGNATURE

5 DECEMBER 2017

DATE

AFFIX LAND SURVEYOR SEAL



GRANT COUNTY

Survey Monument Record

TYPE OF MONUMENT 3/4" X 24" IRON BAR SET

STATE PLANE COORDINATES: N W / CAP
E _____

ELEVATION — M.S.L. DATUM: _____

THETA ANGLE: _____

FIELD BOOK: 96-01

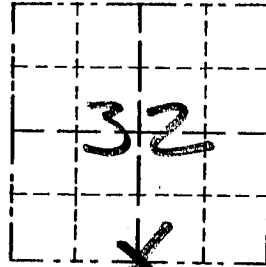
PAGE _____

CORNER NO. _____

SECTION 32

TOWN 4N

RANGE 3W



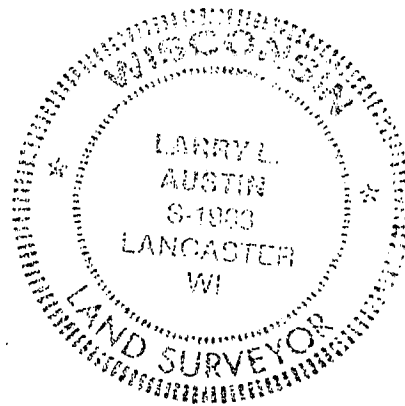
LOCATION
(Indicated by "X")

BASIS FOR MONUMENT LOCATION

(Use reverse side if necessary)

ORIGINAL CORNER SET IN
1832 B4 SIBLEY. I
ACCEPTED OCCUPATION
LOCATION & VERIFIED BY
EDM TRAVERSE OF THE
AREA.

SEAL:



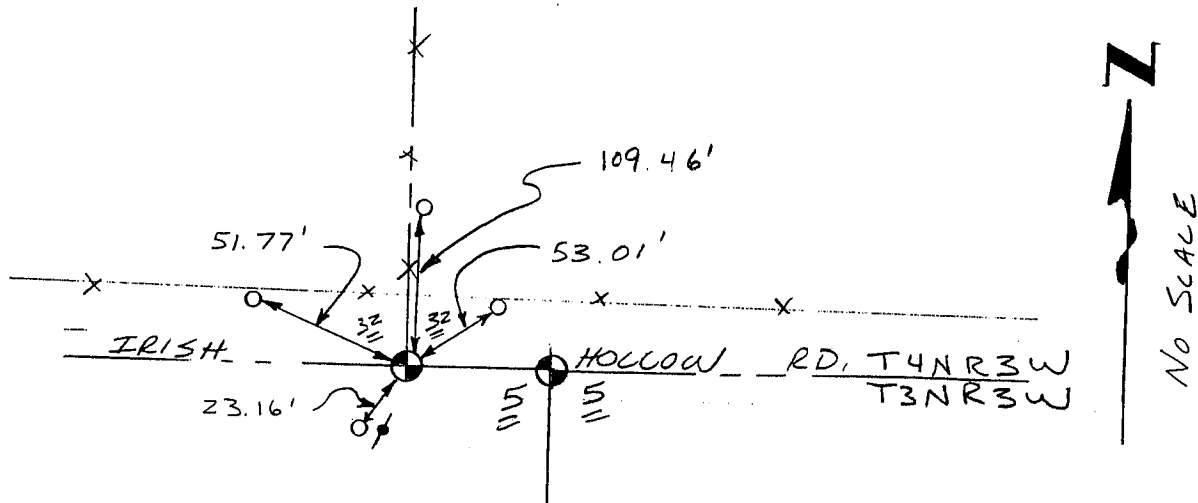
CERTIFIED CORRECT

Larry L. Austin
Registered Land Surveyor

DATE: 2/18/98

TIE SKETCH

Show at least three (3) ties and monument.



LEGEND

- ⊙ 3/4" X 24" IRON BAR SET
W / CAP
- 1" IRON PIPE SET
- ⚡ POWER POLE
- *—*—* EXISTING FENCE

REC'D FEB 10 1997

Survey Monument Record

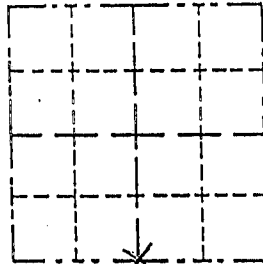
TYPE OF MONUMENT 3/4" REBAR w/ GRANT CO. ALUM. CAP
STATE PLANE COORDINATES: N _____
E _____
ELEVATION — M.S.L. DATUM: _____
THETA ANGLE: _____
FIELD BOOK: 96-2 97-1
PAGE 70 69

CORNER NO. _____
SECTION 32
TOWN 4N
RANGE 3W

BASIS FOR MONUMENT LOCATION

(Use reverse side if necessary)

Show info such as: History of corner, with reference to Vol. and pg., dates, surveyor; exact description of monument replaced; if location computed, by taped or EDM traverse; landowner, remarks, etc.



LOCATION
(Indicated by "X")

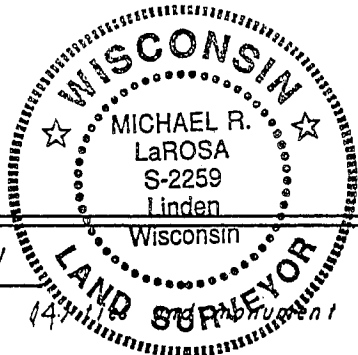
- FOUND PERPETUATED LOCATION
- OBLITERATED EVIDENCE LOCATION
- LOST CORNER (RESTORED BY PROPORTIONATE METHODS)

Found and accepted an aluminum capped 3/4" REBAR at the corner location as established by Larry Austin in early 1996. Corner was noted in a survey by myself dated 4/18/1996. Larry's tie sheet was not on file (as per our phone conversation on 4/17/96) as of this date, 2/4/1997 and this sheet is being filed as per A.E.T.O.B.

CERTIFIED CORRECT TO THE BEST OF MY KNOWLEDGE AND BELIEF

Michael R. LaRosa
Registered Land Surveyor

DATE: 2/4/1997



TIE SKETCH

Show at least one (1) monument

