

REMON
43125

GRANT COUNTY U.S. PUBLIC LAND SURVEY MONUMENT RECORD

INSTRUCTIONS: THIS RECORD SHALL SHOW THE LOCATION OF THE CORNER AND SHALL INCLUDE ALL OF THE FOLLOWING ELEMENTS (A THROUGH I).

- (A) IDENTIFY THE CORNER AS REFERENCED TO THE U.S. PUBLIC LAND SURVEY SYSTEM

■ = CORNER MONUMENT RESTORED

WITNESSES TO CORNER LOCATION:

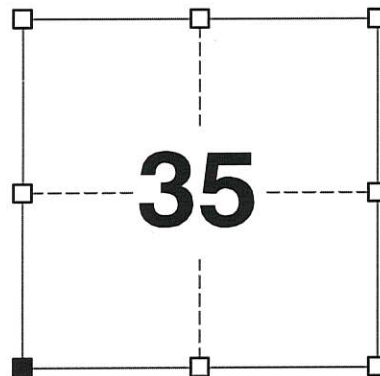
JAY P. ADAMS
STEVEN A. ALT

GEOGRAPHIC COORDINATES,
NAD 83 (2011) ADJUSTMENT:

LATITUDE: 42° 46' 11.36167"
LONGITUDE: 90° 42' 06.78208"

WISCONSIN COORDINATE REFERENCE SYSTEM (WISCRS),
GRANT COUNTY, NAD 83 (2011) ADJUSTMENT:

NORTHING: 495,172.58
EASTING: 821,346.93



SECTION 35
TOWNSHIP 4 NORTH, RANGE 3 WEST
TOWN OF SOUTH LANCASTER

- (B) DESCRIBE ANY RECORD EVIDENCE, MONUMENT EVIDENCE, OCCUPATIONAL EVIDENCE, TESTIMONIAL EVIDENCE OR ANY OTHER MATERIAL EVIDENCE YOU CONSIDERED, AND WHETHER THE MONUMENT WAS FOUND OR PLACED.

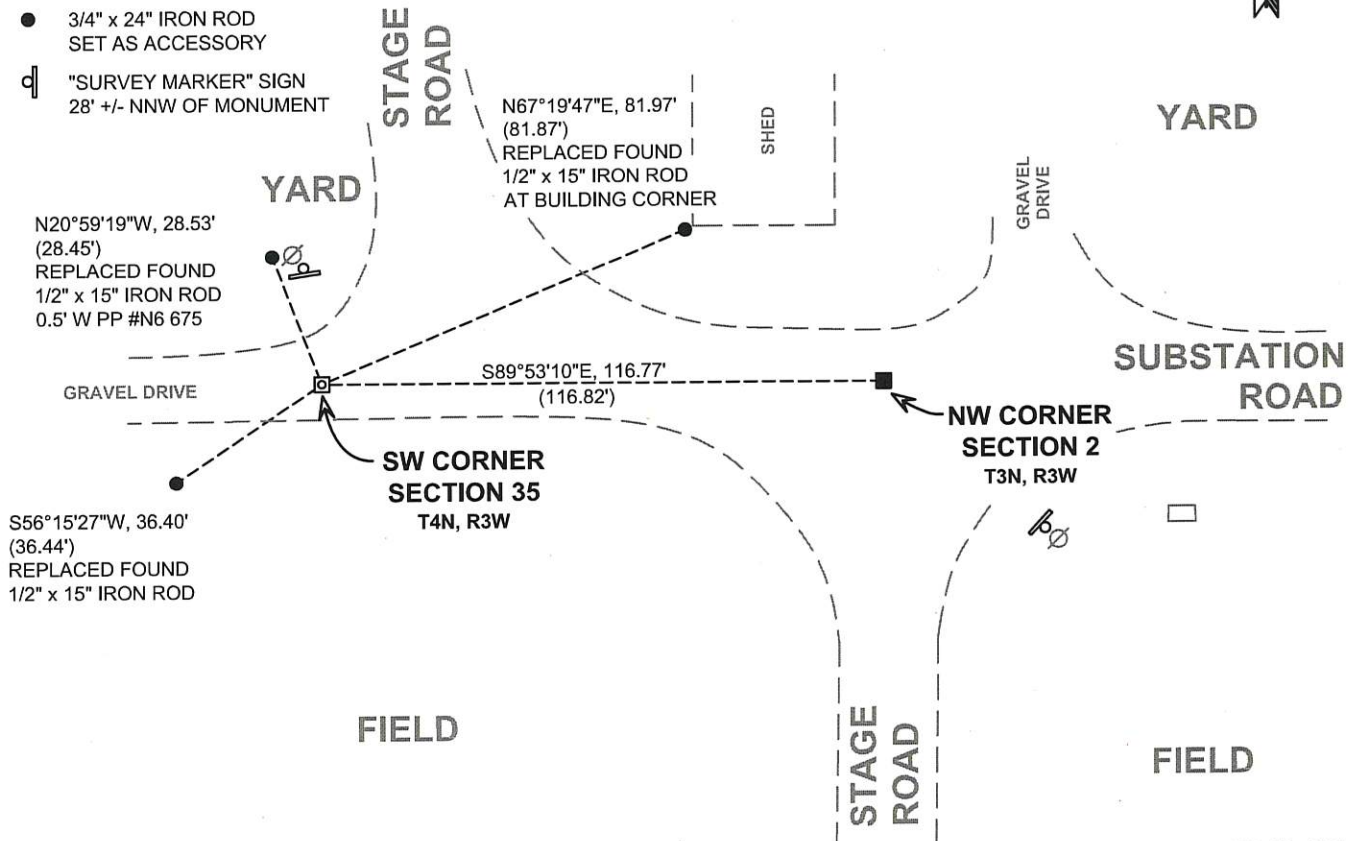
I COULD FIND NO MONUMENTS OR BEARING TREES FROM THE ORIGINAL GOVERNMENT SURVEY. I RECOVERED THE 3/4" REBAR REFERENCED BY AUSTIN WITH THE CAP MISSING. THIS CORNER WAS VERIFIED THROUGH MEASUREMENTS TO TIES ON AUSTIN'S TIE SHEET. THIS LOCATION WAS ACCEPTED AS THE BEST AVAILABLE EVIDENCE OF THE ORIGINAL GOVERNMENT CORNER AND THE MONUMENT WAS LEFT IN PLACE BECAUSE OF EXCEPTIONAL STABILITY.

- (C) IN THE PLAN VIEW DRAWING BELOW, PROVIDE REFERENCE TIES TO AT LEAST 4 WITNESS MONUMENTS. WITNESS MONUMENTS SHALL BE MADE OF CONCRETE, NATURAL STONE, IRON, BEARING TREES OR ANY OTHER EQUALLY DURABLE MATERIAL. DEPICT THE RELEVANT MONUMENTS AND REFERENCE TIES WITH SUFFICIENT DETAIL TO ENABLE ACCURATE RELOCATION OF THE CORNER IF THE CORNER MONUMENT IS DISTURBED.

- (D)

LEGEND:

- ☐ FOUND 3/4" IRON ROD
- FOUND 3/4" IRON ROD WITH ALUMINUM CAP
- 3/4" x 24" IRON ROD SET AS ACCESSORY
- ⓪ "SURVEY MARKER" SIGN 28' +/- NNW OF MONUMENT



(E) DESCRIBE ANY MATERIAL DISCREPANCY BETWEEN THE LOCATION OF THE CORNER AS RESTORED OR REESTABLISHED AND THE LOCATION OF THAT CORNER AS PREVIOUSLY RESTORED OR REESTABLISHED BY DISTANCE AND DIRECTION. SHOW THE DISCREPANCY ON THE PLAN VIEW DRAWING UNDER (D), ABOVE. SHOW THE DISTANCES BETWEEN THE CORNER AS PREVIOUSLY RESTORED OR REESTABLISHED AND (1) THE CORNER AS RESTORED OR REESTABLISHED, AND (2) TO AT LEAST 2 OF THE WITNESS MONUMENTS SHOWN ON THE DRAWING IN (D) ABOVE.

N/A

(F) WAS THE CORNER RESTORED THROUGH ACCEPTANCE OF (1) AN OBLITERATED EVIDENCE LOCATION, OR (2) A FOUND PERPETUATED LOCATION?

(2) A FOUND PERPETUATED LOCATION.

(G&H) WAS THE CORNER REESTABLISHED THROUGH LOST CORNER PROPORTIONATE METHODS? IF SO, SHOW THE METHOD, INCLUDING THE DIRECTIONS AND DISTANCES TO OTHER PUBLIC LAND SURVEY CORNERS USED AS EVIDENCE OR USED FOR PROPORTIONING IN DETERMINING THE CORNER LOCATION.

N/A

CORNER HISTORY

THE ORIGINAL GOVERNMENT CORNER WAS ESTABLISHED BY SYLVESTER SIBLEY IN THE SECOND QUARTER OF 1832.

IN A PLAT OF SURVEY DATED 3 MAY 1996, LARRY AUSTIN SET A 3/4" X 24" IRON ROD WITH ALUMINUM CAP AT THE CORNER.

IN A TIE SHEET DATED 20 DECEMBER 1997, LARRY AUSTIN REPORTS SETTING A 3/4" x 24" REBAR WITH ALUMINUM CAP AT THE RECORDED OFFSET FROM THE NORTHEAST CORNER OF SECTION 3, T3N, R3W.

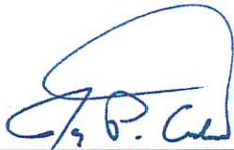
IN A PLAT OF SURVEY DATED 10 APRIL 2003, LARRY AUSTIN REPORTED FINDING A #8 REBAR WITH CAP AT THE CORNER.

IN A PLAT OF SURVEY DATED 30 APRIL 2003, LARRY AUSTIN REPORTED FINDING A #6 REBAR WITH CAP AT THE CORNER.

IN A PLAT OF SURVEY DATED 30 JUNE 2004, LARRY AUSTIN REPORTED FINDING A #6 REBAR WITH CAP AT THE CORNER.

AFFIX LAND SURVEYOR SEAL

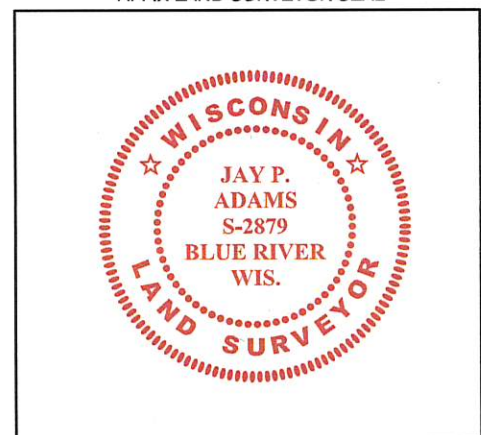
(I) I, JAY P. ADAMS, P.L.S. - 2879, CERTIFY THAT THE CORNER LOCATION SHOWN ON THIS RECORD WAS DETERMINED BY ME OR UNDER MY DIRECTION AND CONTROL AND THAT THIS U.S. PUBLIC LAND SURVEY MONUMENT RECORD IS CORRECT AND COMPLETE TO THE BEST OF MY KNOWLEDGE AND BELIEF.



SIGNATURE

5 DECEMBER 2017

DATE

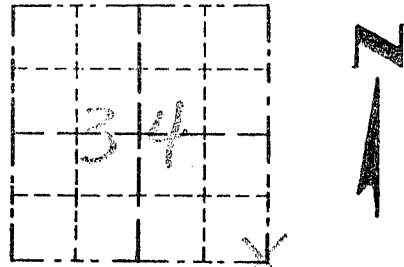


Survey Monument Record

TYPE OF MONUMENT 3/4" X 24" IRON
BAR SET W/ CAP

CORNER NO. 125
 SECTION 34
 TOWN 4N
 RANGE 3W

FIELD BOOK: 96-01
 PAGE 18-19



LOCATION
 (Indicated by "X")

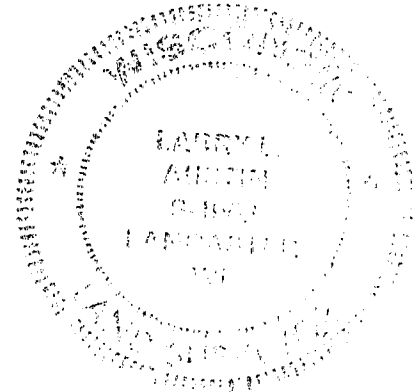
BASIS FOR MONUMENT LOCATION

(Use reverse side if necessary)

Show info such as: History of corner, with reference to Vol. and pg., dates, surveyor; exact description of monument replaced; if location computed, by taped or EDM traverse; landowner, remarks, etc.

SEAL:

CORNER SET IN 1832 BY SIBLEY. NO RECORD OF CORNER FOUND SINCE ORIGINAL SURVEYS. I SET THE CORNER AT THE RECORDED OFFSET FROM THE NORTHEAST CORNER OF SECTION 3 T3N R3W. VERIFIED THIS LOCATION USING EDM METHODS.



CERTIFIED CORRECT

Randy L. Aust
 Registered Land Surveyor

DATE: 12/20/97

TIE SKETCH

Show at least three (3) ties and monument

LEGEND

- 3/4" X 24" IRON BAR SET W/ ALUM. CAP.
- 1/2" X 15" IRON BAR SET
- XX EXISTING FENCE

