

REMON

43124

GRANT COUNTY U.S. PUBLIC LAND SURVEY MONUMENT RECORD

INSTRUCTIONS: THIS RECORD SHALL SHOW THE LOCATION OF THE CORNER AND SHALL INCLUDE ALL OF THE FOLLOWING ELEMENTS (A THROUGH I).

(A) IDENTIFY THE CORNER AS REFERENCED TO THE U.S. PUBLIC LAND SURVEY SYSTEM

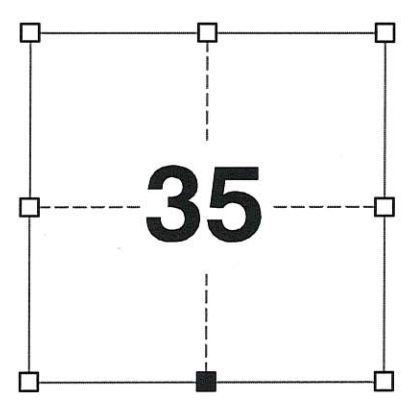
■ = CORNER MONUMENT RESTORED

WITNESSES TO CORNER LOCATION:
JAY P. ADAMS
STEVEN A. ALT
MATTHEW S. SCHNEIDER

GEOGRAPHIC COORDINATES,
NAD 83 (2011) ADJUSTMENT:
LATITUDE: 42° 46' 11.27749"
LONGITUDE: 90° 41' 31.19477"

WISCONSIN COORDINATE REFERENCE SYSTEM (WISCRS),
GRANT COUNTY, NAD 83 (2011) ADJUSTMENT:

NORTHING: 495,167.30
EASTING: 824,001.44



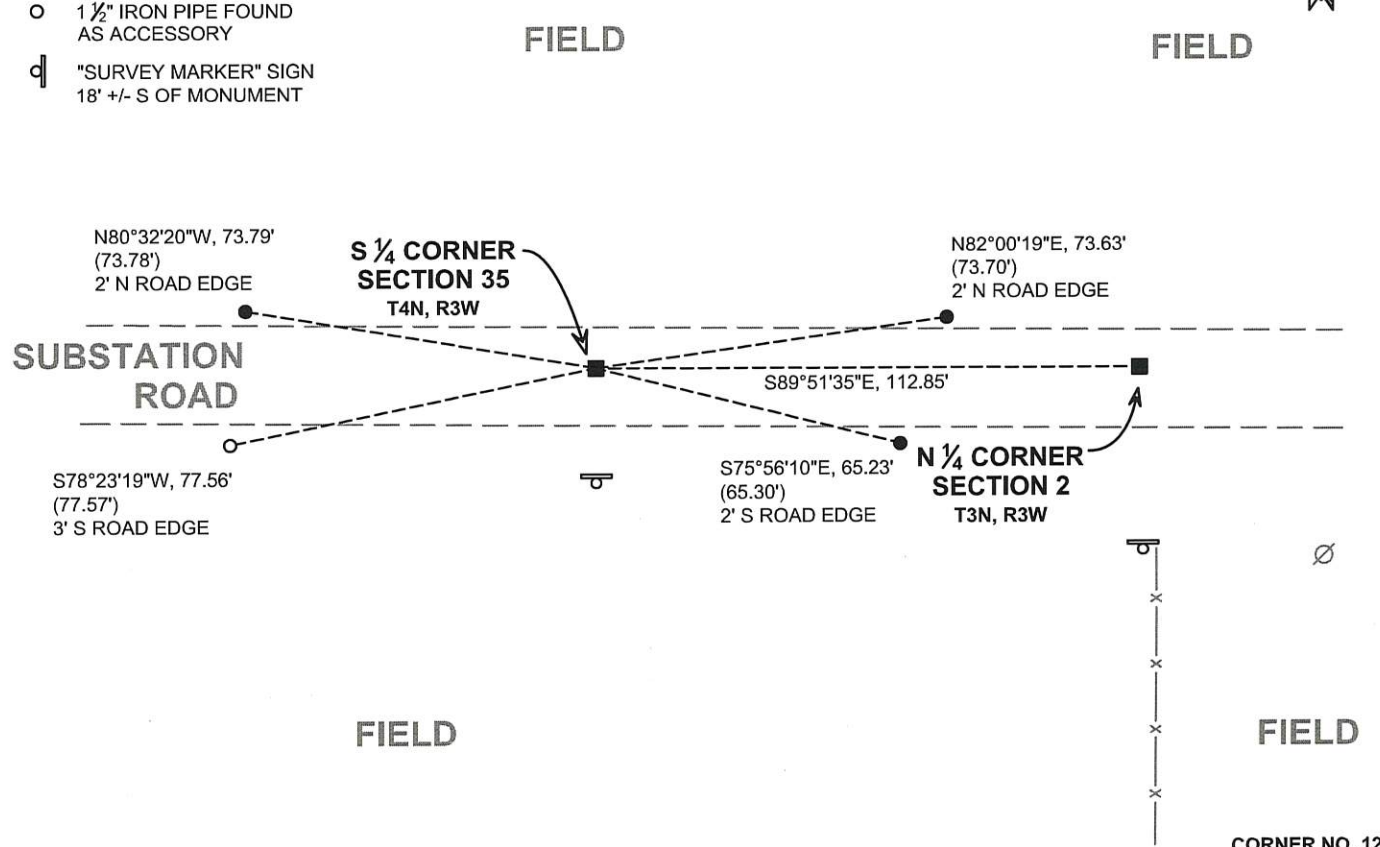
SECTION 35
TOWNSHIP 4 NORTH, RANGE 3 WEST
TOWN OF SOUTH LANCASTER

(B) DESCRIBE ANY RECORD EVIDENCE, MONUMENT EVIDENCE, OCCUPATIONAL EVIDENCE, TESTIMONIAL EVIDENCE OR ANY OTHER MATERIAL EVIDENCE YOU CONSIDERED, AND WHETHER THE MONUMENT WAS FOUND OR PLACED.

I COULD FIND NO MONUMENTS OR BEARING TREES FROM THE ORIGINAL GOVERNMENT SURVEY. I RECOVERED THE 3/4" REBAR REFERENCED BY WALSH AND AUSTIN. I ALSO LOCATED A SECOND 3/4" REBAR NEAR THE CORNER (SEE REVERSE FOR DETAIL). THIS CORNER WAS VERIFIED THROUGH MEASUREMENTS TO TIES ON WALSH'S TIE SHEET. THIS LOCATION WAS ACCEPTED AS THE BEST AVAILABLE EVIDENCE OF THE ORIGINAL GOVERNMENT CORNER AND THE MONUMENT WAS LEFT IN PLACE BECAUSE OF EXCEPTIONAL STABILITY.

(C) IN THE PLAN VIEW DRAWING BELOW, PROVIDE REFERENCE TIES TO AT LEAST 4 WITNESS MONUMENTS. WITNESS MONUMENTS SHALL BE MADE OF CONCRETE, NATURAL STONE, IRON, BEARING TREES OR ANY OTHER EQUALLY DURABLE MATERIAL. DEPICT THE RELEVANT MONUMENTS AND REFERENCE TIES WITH SUFFICIENT DETAIL TO ENABLE ACCURATE RELOCATION OF THE CORNER IF THE CORNER MONUMENT IS DISTURBED.

- (D)
- LEGEND:**
- FOUND 3/4" IRON ROD
 - 3/4" IRON ROD FOUND AS ACCESSORY
 - 1 1/2" IRON PIPE FOUND AS ACCESSORY
 - ⊓ "SURVEY MARKER" SIGN 18' +/- S OF MONUMENT



(E) DESCRIBE ANY MATERIAL DISCREPANCY BETWEEN THE LOCATION OF THE CORNER AS RESTORED OR REESTABLISHED AND THE LOCATION OF THAT CORNER AS PREVIOUSLY RESTORED OR REESTABLISHED BY DISTANCE AND DIRECTION. SHOW THE DISCREPANCY ON THE PLAN VIEW DRAWING UNDER (D), ABOVE. SHOW THE DISTANCES BETWEEN THE CORNER AS PREVIOUSLY RESTORED OR REESTABLISHED AND (1) THE CORNER AS RESTORED OR REESTABLISHED, AND (2) TO AT LEAST 2 OF THE WITNESS MONUMENTS SHOWN ON THE DRAWING IN (D) ABOVE.

N/A

(F) WAS THE CORNER RESTORED THROUGH ACCEPTANCE OF (1) AN OBLITERATED EVIDENCE LOCATION, OR (2) A FOUND PERPETUATED LOCATION?

(2) A FOUND PERPETUATED LOCATION.

(G&H) WAS THE CORNER REESTABLISHED THROUGH LOST CORNER PROPORTIONATE METHODS? IF SO, SHOW THE METHOD, INCLUDING THE DIRECTIONS AND DISTANCES TO OTHER PUBLIC LAND SURVEY CORNERS USED AS EVIDENCE OR USED FOR PROPORTIONING IN DETERMINING THE CORNER LOCATION.

N/A

CORNER HISTORY

THE ORIGINAL GOVERNMENT CORNER WAS ESTABLISHED BY SYLVESTER SIBLEY IN THE SECOND QUARTER OF 1832.

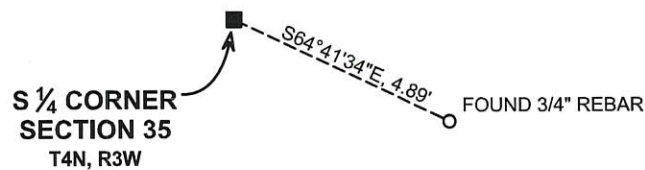
IN A TIE SHEET DATED 20 MAY 1994, SEAN WALSH REPORTED FINDING A 3/4" REBAR AT THE CORNER.

IN A PLAT OF SURVEY DATED 3 MAY 1996, LARRY AUSTIN SET A 3/4" X 24" IRON ROD WITH ALUMINUM CAP AT THE CORNER.

IN A PLAT OF SURVEY DATED 30 JUNE 2004, LARRY AUSTIN REPORTED FINDING A #6 REBAR AT THE CORNER.

IN AN ALTA SURVEY DATED 12 NOVEMBER 2012, JIMMY ROSE REPORTED FINDING A 3/4" IRON ROD AT THE CORNER.

CORNER DETAIL



AFFIX LAND SURVEYOR SEAL

(I) I, JAY P. ADAMS, P.L.S. - 2879, CERTIFY THAT THE CORNER LOCATION SHOWN ON THIS RECORD WAS DETERMINED BY ME OR UNDER MY DIRECTION AND CONTROL AND THAT THIS U.S. PUBLIC LAND SURVEY MONUMENT RECORD IS CORRECT AND COMPLETE TO THE BEST OF MY KNOWLEDGE AND BELIEF.

SIGNATURE

5 DECEMBER 2017

DATE



GOVERNMENT CORNER RECORD

S 1/4 CORNER, SECTION 35, TOWNSHIP 4 NORTH, RANGE 3 EAST-WEST,

TOWN, CITY OR VILLAGE OF South Lancaster

TYPE OF MONUMENT: 3/4" Iron Rod Found ELEVATION - M.S.L. DATUM _____

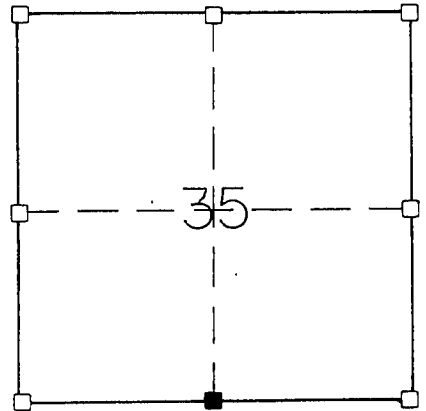
WITNESSES TO CORNER LOCATION

Sean M. Walsh

Scott H. Chyko

SECTION 35, T 4 N, R 3 EW

TOWN OF S. Lancaster



TIE SKETCH
(SHOW ALL HELPFUL FEATURES)

FIELD

FIELD

IRS

IRS

73.78'

73.70'

Section Line

Centerline

SUBSTATION ROAD

77.57'

65.30'

IRS

IRS

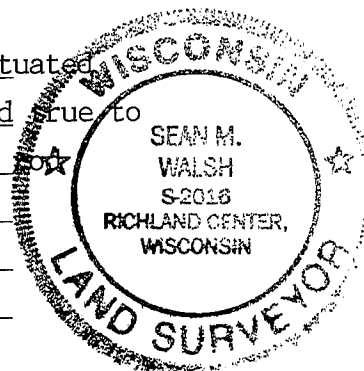
Field Entrance

PASTURE

SURVEYOR'S CERTIFICATE

SEAL S. 2016

I, Sean M. Walsh, DO HEREBY CERTIFY THAT I have accepted and perpetuated the above corner as shown hereon and that this information is correct and true to the best of my information, knowledge and belief. I located a 3/4" iron rod at this location and accepted as the best available evidence.



DATED THIS 20 DAY OF MAY, 19 94

Sean M. Walsh
REGISTERED LAND SURVEYOR