

REMON

43 123

GRANT COUNTY U.S. PUBLIC LAND SURVEY MONUMENT RECORD

INSTRUCTIONS: THIS RECORD SHALL SHOW THE LOCATION OF THE CORNER AND SHALL INCLUDE ALL OF THE FOLLOWING ELEMENTS (A THROUGH I).

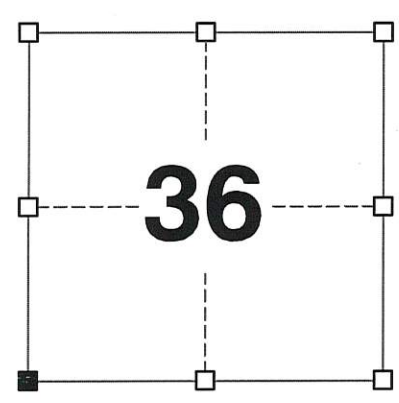
(A) IDENTIFY THE CORNER AS REFERENCED TO THE U.S. PUBLIC LAND SURVEY SYSTEM

■ = CORNER MONUMENT RESTORED

WITNESSES TO CORNER LOCATION:
JAY P. ADAMS
STEVEN A. ALT

GEOGRAPHIC COORDINATES,
NAD 83 (2011) ADJUSTMENT:
LATITUDE: 42° 46' 11.17839"
LONGITUDE: 90° 40' 55.66160"

WISCONSIN COORDINATE REFERENCE SYSTEM (WISCRS),
GRANT COUNTY, NAD 83 (2011) ADJUSTMENT:
NORTHING: 495,160.81
EASTING: 826,651.92



SECTION 36
TOWNSHIP 4 NORTH, RANGE 3 WEST
TOWN OF SOUTH LANCASTER

(B) DESCRIBE ANY RECORD EVIDENCE, MONUMENT EVIDENCE, OCCUPATIONAL EVIDENCE, TESTIMONIAL EVIDENCE OR ANY OTHER MATERIAL EVIDENCE YOU CONSIDERED, AND WHETHER THE MONUMENT WAS FOUND OR PLACED.

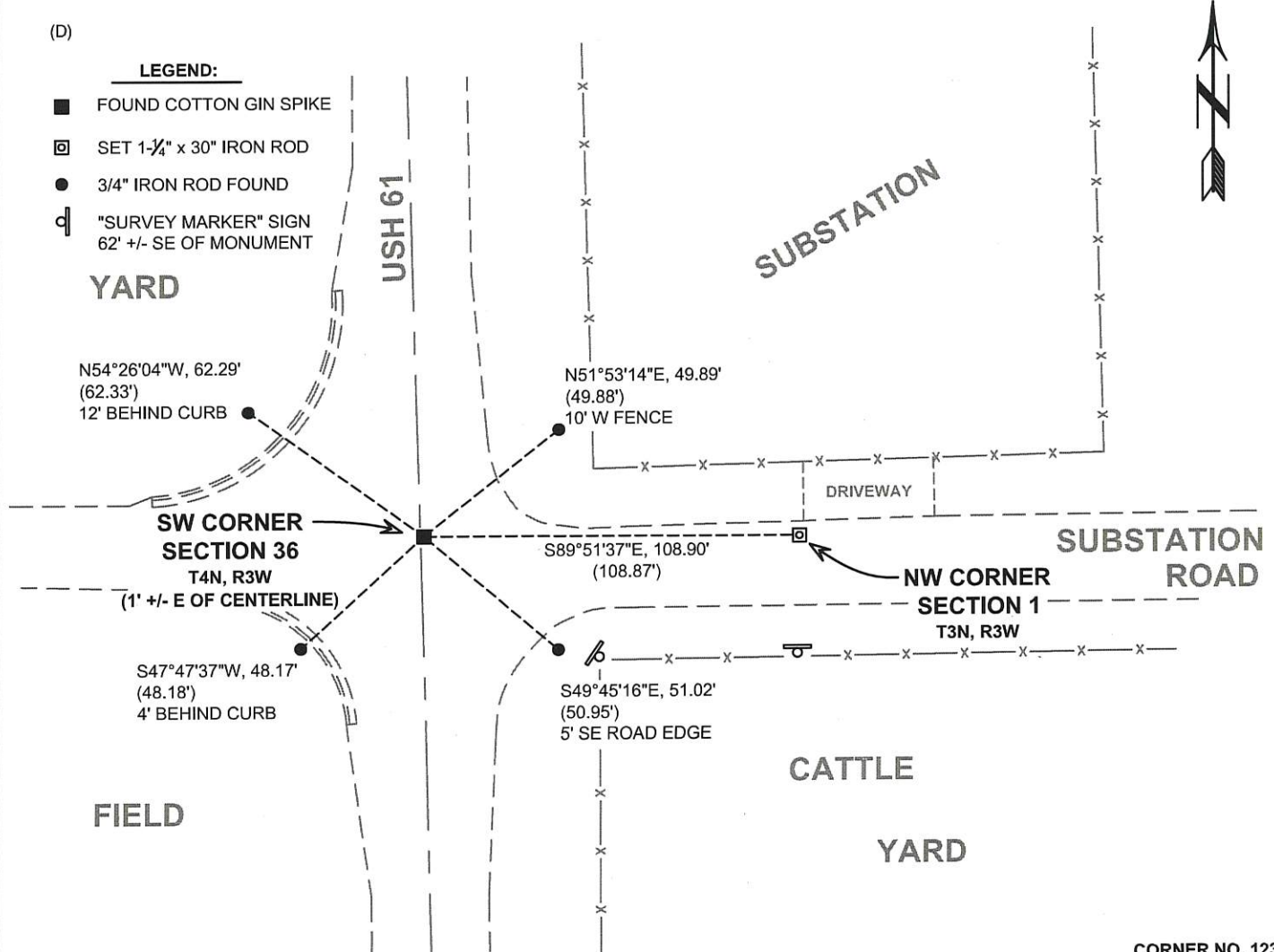
I COULD FIND NO MONUMENT OR BEARING TREES FROM THE ORIGINAL GOVERNMENT SURVEY OR THE HISTORIC COUNTY SURVEYOR'S SUBSEQUENT RESURVEYS. I RECOVERED THE COTTON GIN SPIKE SET BY KREBS AND ACCEPTED ITS LOCATION AS THE BEST AVAILABLE EVIDENCE OF THE ORIGINAL GOVERNMENT CORNER.

(C) IN THE PLAN VIEW DRAWING BELOW, PROVIDE REFERENCE TIES TO AT LEAST 4 WITNESS MONUMENTS. WITNESS MONUMENTS SHALL BE MADE OF CONCRETE, NATURAL STONE, IRON, BEARING TREES OR ANY OTHER EQUALLY DURABLE MATERIAL. DEPICT THE RELEVANT MONUMENTS AND REFERENCE TIES WITH SUFFICIENT DETAIL TO ENABLE ACCURATE RELOCATION OF THE CORNER IF THE CORNER MONUMENT IS DISTURBED.

(D)

LEGEND:

- FOUND COTTON GIN SPIKE
- SET 1-1/4" x 30" IRON ROD
- 3/4" IRON ROD FOUND
- ⊞ "SURVEY MARKER" SIGN 62' +/- SE OF MONUMENT



(E) DESCRIBE ANY MATERIAL DISCREPANCY BETWEEN THE LOCATION OF THE CORNER AS RESTORED OR REESTABLISHED AND THE LOCATION OF THAT CORNER AS PREVIOUSLY RESTORED OR REESTABLISHED BY DISTANCE AND DIRECTION. SHOW THE DISCREPANCY ON THE PLAN VIEW DRAWING UNDER (D), ABOVE. SHOW THE DISTANCES BETWEEN THE CORNER AS PREVIOUSLY RESTORED OR REESTABLISHED AND (1) THE CORNER AS RESTORED OR REESTABLISHED, AND (2) TO AT LEAST 2 OF THE WITNESS MONUMENTS SHOWN ON THE DRAWING IN (D) ABOVE.

N/A

(F) WAS THE CORNER RESTORED THROUGH ACCEPTANCE OF (1) AN OBLITERATED EVIDENCE LOCATION, OR (2) A FOUND PERPETUATED LOCATION?

(2) A FOUND PERPETUATED LOCATION.

(G&H) WAS THE CORNER REESTABLISHED THROUGH LOST CORNER PROPORTIONATE METHODS? IF SO, SHOW THE METHOD, INCLUDING THE DIRECTIONS AND DISTANCES TO OTHER PUBLIC LAND SURVEY CORNERS USED AS EVIDENCE OR USED FOR PROPORTIONING IN DETERMINING THE CORNER LOCATION.

N/A

CORNER HISTORY

THE ORIGINAL GOVERNMENT CORNER WAS ESTABLISHED BY SYLVESTER SIBLEY IN THE SECOND QUARTER OF 1832.

IN SURVEYS DATED 1844 RECORDED IN VOLUME A, PAGES 199 AND 200 OF SURVEY RECORDS, SAM WILTSE USED THIS CORNER.

IN A TIE SHEET DATED 20 MAY 1994, SEAN WALSH SET A RAIL ROAD SPIKE AT THIS CORNER.

IN A PLAT OF SURVEY DATED 3 JANUARY 2000 RECORDED IN VOLUME 7, PAGE 36 OF SURVEY RECORDS, LARRY AUSTIN REPORTED FINDING A RAILROAD SPIKE.

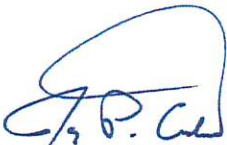
IN A PLAT OF SURVEY DATED 7 DECEMBER 2011 RECORDED IN VOLUME 30, PAGE 66 OF SURVEY RECORDS, AARON AUSTIN REPORTED THE CORNER DESTROYED NOTING A DISTANCE TO THE CORNER.

IN A PLAT OF SURVEY DATED 14 MARCH 2012 RECORDED IN VOLUME 34, PAGE 22 OF SURVEY RECORDS, AARON AUSTIN REPORTS A COTTON GIN SPIKE TO BE SET BY OTHERS.

IN A TIE SHEET DATED 23 APRIL 2012, JOHN KREBS SET A COTTON GIN SPIKE AT THIS CORNER.

A NUMBER OF SURVEYS SINCE 2012 NOTE FINDING THE COTTON GIN SPIKE SET BY KREBS AT THE CORNER.

(I) I, JAY P. ADAMS, P.L.S. - 2879, CERTIFY THAT THE CORNER LOCATION SHOWN ON THIS RECORD WAS DETERMINED BY ME OR UNDER MY DIRECTION AND CONTROL AND THAT THIS U.S. PUBLIC LAND SURVEY MONUMENT RECORD IS CORRECT AND COMPLETE TO THE BEST OF MY KNOWLEDGE AND BELIEF.

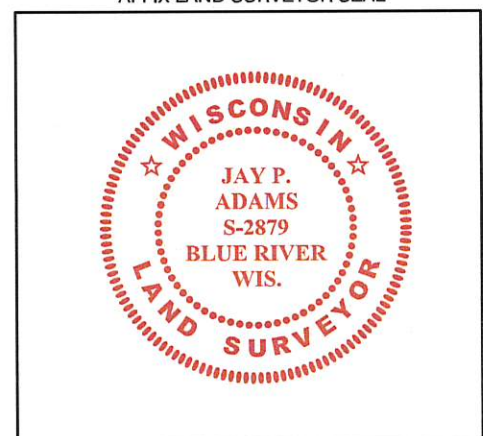


SIGNATURE

5 DECEMBER 2017

DATE

AFFIX LAND SURVEYOR SEAL



U.S. PUBLIC LAND SURVEY MONUMENT RECORD - GRANT COUNTY, WI

Section 36, Town 4 North, Range 3 West, Town of South Lancaster

(a)

NOTE: This form is intended and designed to fulfill all requirements of Wisconsin Administrative Code, Chapter A-E 7.08, U.S. Public Land Survey Monument Record (3) (a) (b) (c) (d) (e) (f) (g) (h) (i). "An additional sheet may be added if necessary to conform with said requirements."

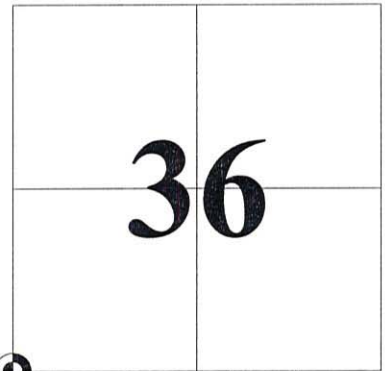
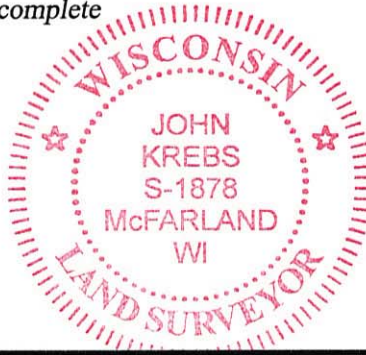
CERTIFICATE:

(i)

I, John Krebs, do hereby certify that the corner location on this record was determined by me and/or under my direct supervision and that this U.S. Public Land Survey Monument Record is correct and complete to the best of my knowledge and belief.

Dated this 4th day of April, 2012.

John Krebs 4-23-12
 John Krebs, S-1878



CORNER LOCATION

HISTORY OF CORNER ESTABLISHMENT:

Sean M. Walsh set monument on May 20, 1994.
 Michael S. O'Keefe, S-2743, located corner on July 6, 2011, before road construction began.

DESCRIPTION OF CORNER EVIDENCE FOUND:

(b) (f) (g) (h)

Corner was removed during road construction. Replaced corner per location by Michael O'Keefe. Found two ties per tie sheet by Sean M. Walsh, S-2016, dated May 20, 1994. I set cotton pin at the Section Corner and set two new ties as shown hereon.

Witnesses to corner location _____

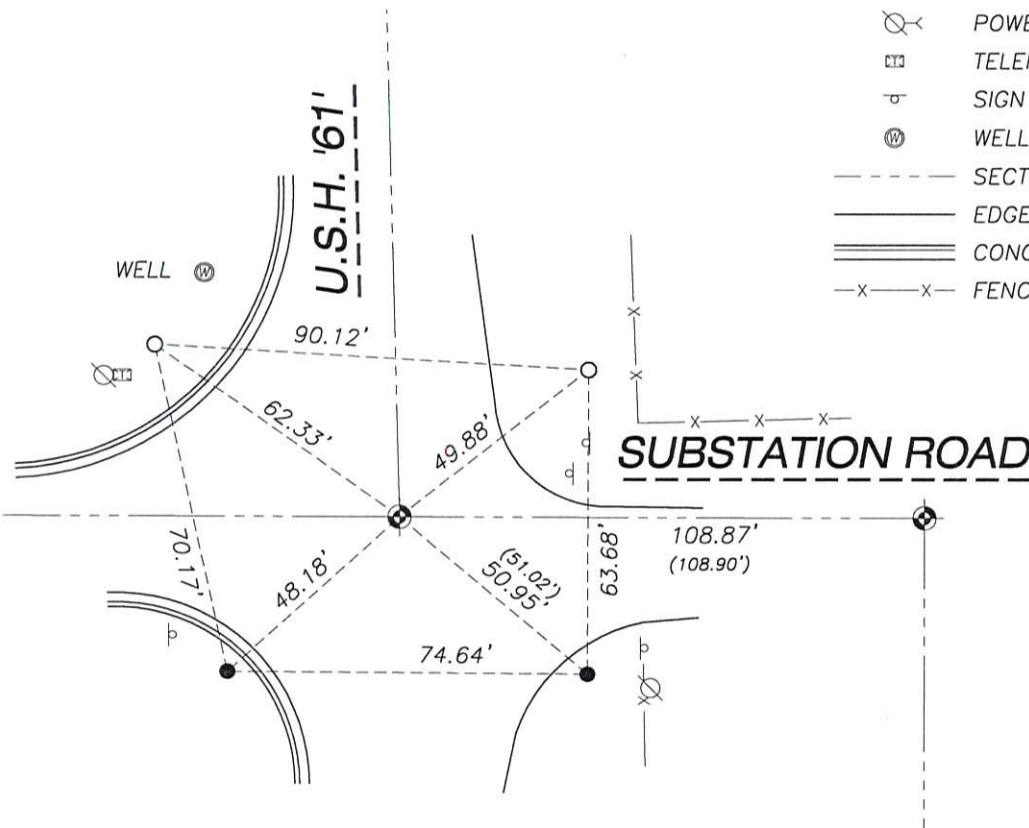
DESCRIPTION OF CORNER AND WITNESS MONUMENTS: references and accessories used to perpetuate the original or re-established location of this corner.

(c) (d) (e)

SKETCH:

LEGEND

- GOVERNMENT CORNER
- 3/4" REBAR FOUND
- 3/4" x 24" REBAR SET (1.50 LBS/LF)
- POWER POLE W/GUY
- TELEPHONE PEDESTAL
- SIGN
- WELL
- SECTION LINE
- EDGE OF PAVEMENT
- CONCRETE CURB & GUTTER
- FENCE LINE



SCALE: 1" = 40'

SHEET 1 OF 1

123

J:\2011\114660\dwg\11-4660 WisDOT Dickeyville.dwg

GOVERNMENT CORNER RECORD

Southeast CORNER, SECTION 35, TOWNSHIP 4 NORTH, RANGE 3 EAST - WEST,

TOWN, CITY OR VILLAGE OF South Lancaster

TYPE OF MONUMENT: Railroad Spike Set ELEVATION - M.S.L. DATUM _____

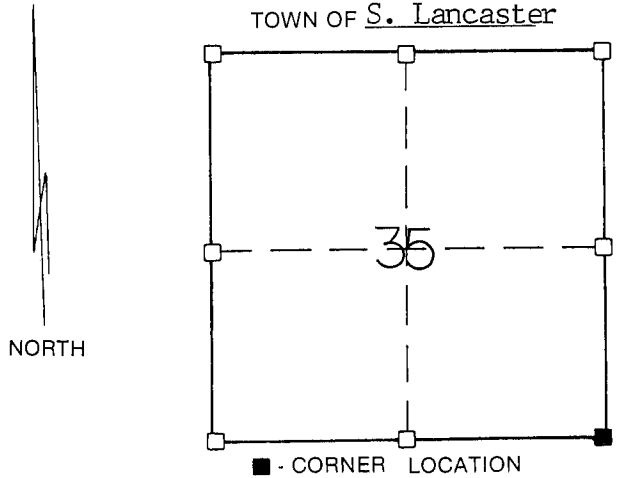
WITNESSES TO CORNER LOCATION

Sean M. Walsh

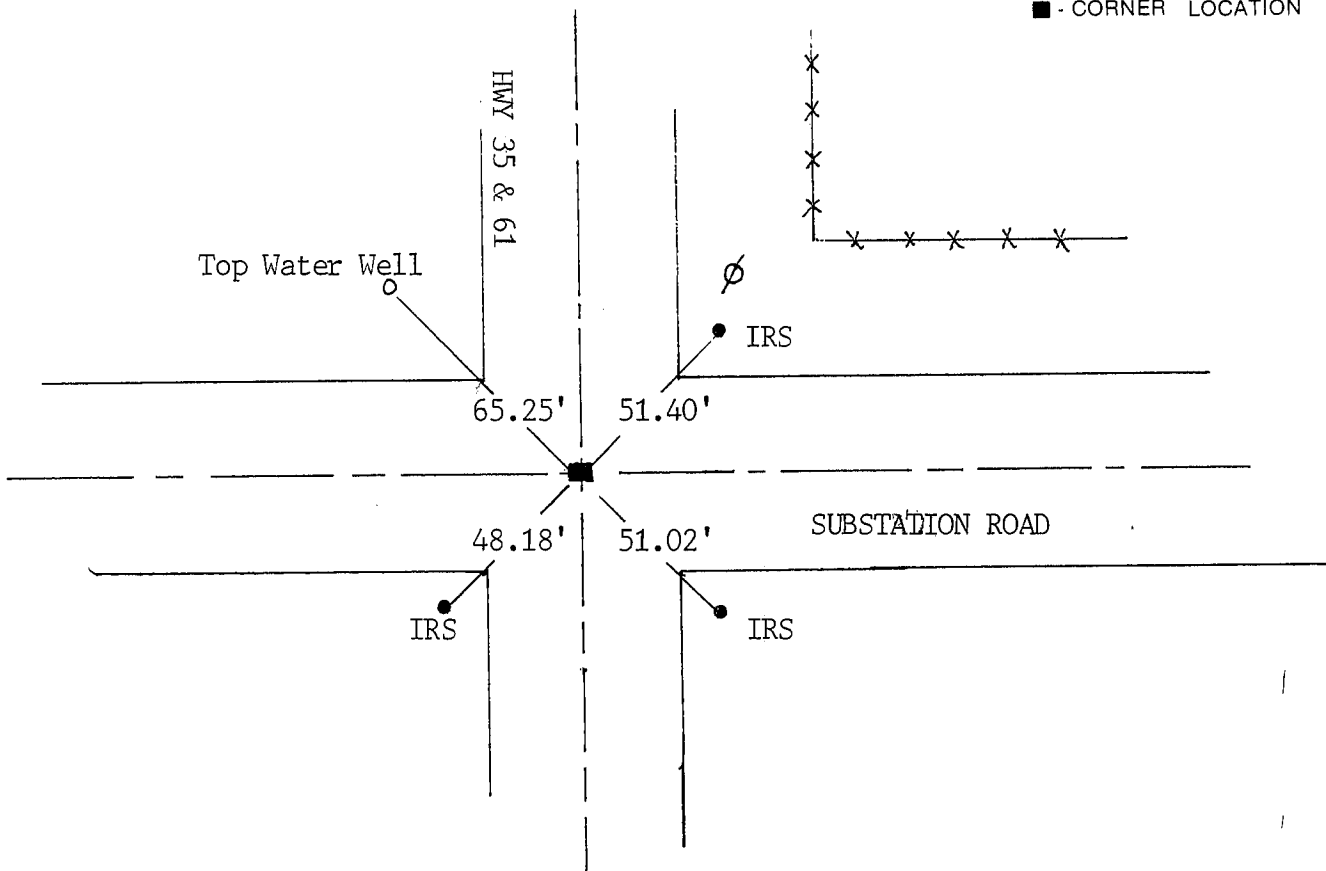
Scott H. Chyko

SECTION 35, T. 4 N, R. 3 EW

TOWN OF S. Lancaster



TIE SKETCH
(SHOW ALL HELPFUL FEATURES)



SURVEYOR'S CERTIFICATE

I, Sean M. Walsh, DO HEREBY CERTIFY THAT I have monumented the above corner according to the information contained hereon and that this information is correct and true to the best of my information, knowledge and belief. I established this corner at a location which is the point of intersection of the East line of Section 35 and the South line of the township. The East line of the Northeast 1/4 of the section was previously established by Bruce Bowden in 1986.

DATED THIS 20 DAY OF MAY, 19 94

Sean M. Walsh
REGISTERED LAND SURVEYOR

SEAL S- 2016

