

GRANT COUNTY U.S. PUBLIC LAND SURVEY MONUMENT RECORD

INSTRUCTIONS: THIS RECORD SHALL SHOW THE LOCATION OF THE CORNER AND SHALL INCLUDE ALL OF THE FOLLOWING ELEMENTS (A THROUGH I).

- (A) IDENTIFY THE CORNER AS REFERENCED TO THE U.S. PUBLIC LAND SURVEY SYSTEM

■ = CORNER MONUMENT RESTORED

WITNESSES TO CORNER LOCATION:

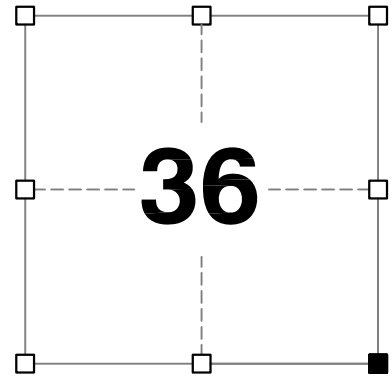
JAY P. ADAMS
STEVEN A. ALT
MATTHEW S. SCHNEIDER

GEOGRAPHIC COORDINATES,
NAD 83 (2011) ADJUSTMENT:

LATITUDE: 42° 46' 10.97075"
LONGITUDE: 90° 39' 44.39362"

WISCONSIN COORDINATE REFERENCE SYSTEM (WISCRS),
GRANT COUNTY, NAD 83 (2011) ADJUSTMENT:

NORTHING: 495,147.84
EASTING: 831,967.92



SECTION 36
TOWNSHIP 4 NORTH, RANGE 3 WEST
TOWN OF SOUTH LANCASTER

- (B) DESCRIBE ANY RECORD EVIDENCE, MONUMENT EVIDENCE, OCCUPATIONAL EVIDENCE, TESTIMONIAL EVIDENCE OR ANY OTHER MATERIAL EVIDENCE YOU CONSIDERED, AND WHETHER THE MONUMENT WAS FOUND OR PLACED.

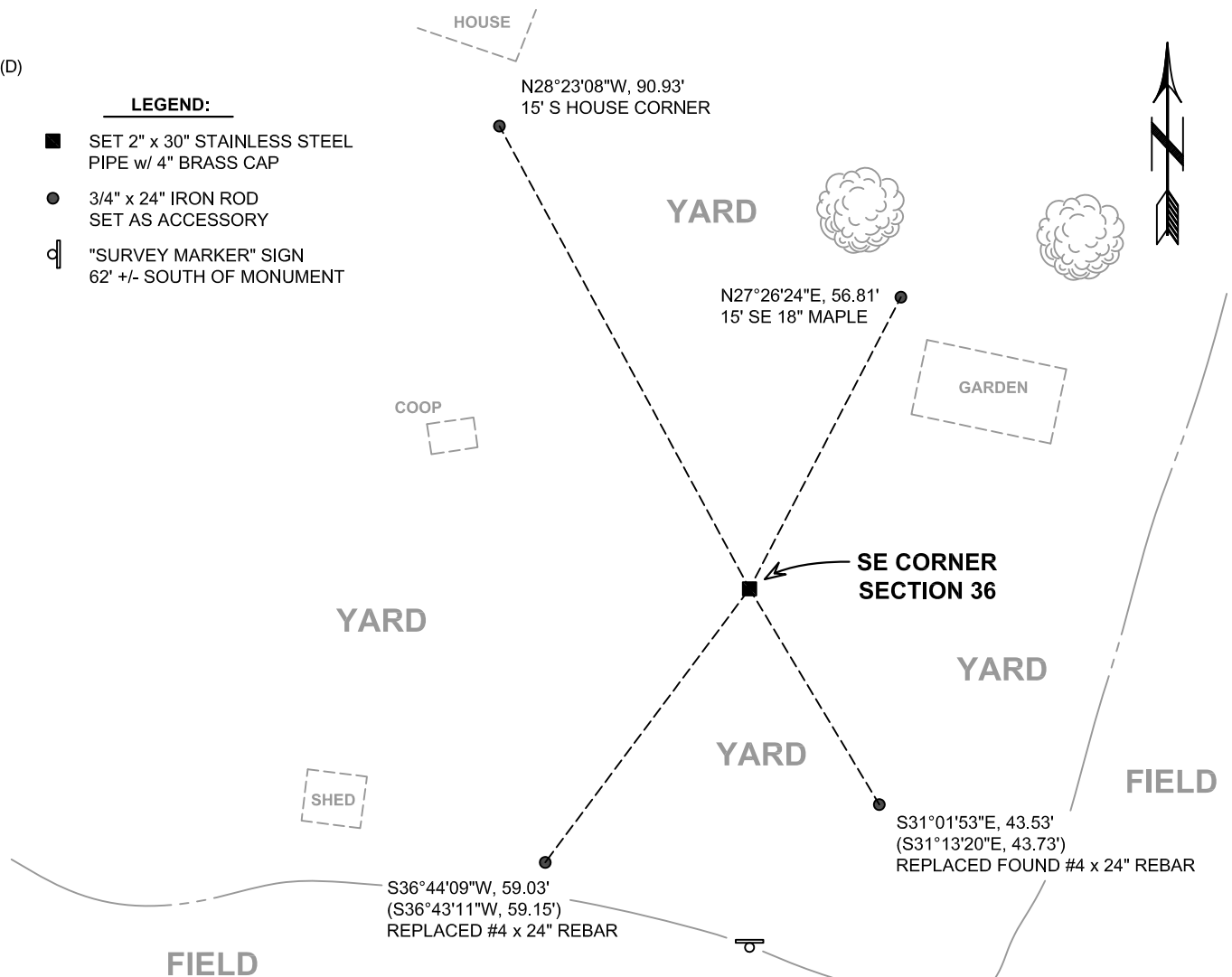
I COULD FIND NO MONUMENT OR BEARING TREES FROM THE ORIGINAL GOVERNMENT SURVEY OR THE HISTORIC COUNTY SURVEYOR'S SUBSEQUENT RESURVEYS. I RECOVERED THE #8 x 30" REBAR (CAP MISSING) SET BY LARRY AUSTIN AND ACCEPTED THIS LOCATION FOR THE CORNER. THE REBAR WAS REPLACED WITH A 2" x 30" STAINLESS STEEL PIPE WITH A 4" GRANT COUNTY BRASS CAP AS DEPICTED BELOW.

- (C) IN THE PLAN VIEW DRAWING BELOW, PROVIDE REFERENCE TIES TO AT LEAST 4 WITNESS MONUMENTS. WITNESS MONUMENTS SHALL BE MADE OF CONCRETE, NATURAL STONE, IRON, BEARING TREES OR ANY OTHER EQUALLY DURABLE MATERIAL. DEPICT THE RELEVANT MONUMENTS AND REFERENCE TIES WITH SUFFICIENT DETAIL TO ENABLE ACCURATE RELOCATION OF THE CORNER IF THE CORNER MONUMENT IS DISTURBED.

- (D)

LEGEND:

- SET 2" x 30" STAINLESS STEEL PIPE w/ 4" BRASS CAP
- 3/4" x 24" IRON ROD SET AS ACCESSORY
- ⊓ "SURVEY MARKER" SIGN 62' +/- SOUTH OF MONUMENT



(E) DESCRIBE ANY MATERIAL DISCREPANCY BETWEEN THE LOCATION OF THE CORNER AS RESTORED OR REESTABLISHED AND THE LOCATION OF THAT CORNER AS PREVIOUSLY RESTORED OR REESTABLISHED BY DISTANCE AND DIRECTION. SHOW THE DISCREPANCY ON THE PLAN VIEW DRAWING UNDER (D), ABOVE. SHOW THE DISTANCES BETWEEN THE CORNER AS PREVIOUSLY RESTORED OR REESTABLISHED AND (1) THE CORNER AS RESTORED OR REESTABLISHED, AND (2) TO AT LEAST 2 OF THE WITNESS MONUMENTS SHOWN ON THE DRAWING IN (D) ABOVE.

N/A

(F) WAS THE CORNER RESTORED THROUGH ACCEPTANCE OF (1) AN OBLITERATED EVIDENCE LOCATION, OR (2) A FOUND PERPETUATED LOCATION?

(2) A FOUND PERPETUATED LOCATION.

(G&H) WAS THE CORNER REESTABLISHED THROUGH LOST CORNER PROPORTIONATE METHODS? IF SO, SHOW THE METHOD, INCLUDING THE DIRECTIONS AND DISTANCES TO OTHER PUBLIC LAND SURVEY CORNERS USED AS EVIDENCE OR USED FOR PROPORTIONING IN DETERMINING THE CORNER LOCATION.

N/A

CORNER HISTORY

THE ORIGINAL GOVERNMENT CORNER WAS ESTABLISHED BY SYLVESTER SIBLEY IN THE SECOND QUARTER OF 1832.

IN A SURVEY DATED 29 DECEMBER 1852 RECORDED IN VOLUME B, PAGE 314 OF SURVEY RECORDS, JOHN F. EVERETT REPORTED FINDING THE ORIGINAL GOVERNMENT CORNER.

IN A SURVEY DATED 6 NOVEMBER 1868 RECORDED IN VOLUME B, PAGE 527 OF SURVEY RECORDS, JOEL BARBER REPORTS "TOWN CORNER."

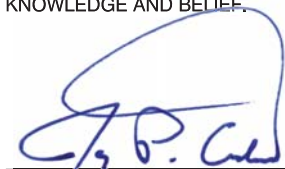
IN A SURVEY DATED 25 JUNE 1883 RECORDED IN VOLUME D, PAGE 139 OF SURVEY RECORDS, J.C. SCOTT TOOK TWO NEW BEARING TREE REFERENCES TO THE CORNER.

IN A PLAT OF SURVEY DATED 18 JANUARY 2005, LARRY AUSTIN SET A #8 x 30" REBAR WITH GRANT COUNTY ALUMINUM CAP AT THIS LOCATION.

IN A PLAT OF SURVEY DATED 22 JUNE 2005, LARRY AUSTIN REPORTS FINDING A #8 x 30" REBAR WITH GRANT COUNTY ALUMINUM CAP AT THIS LOCATION.

THIS MONUMENT IS FURTHER REFERENCED IN A TIE SHEET BY LARRY AUSTIN DATED 30 DECEMBER 2005 WHEREBY HE EXPLAINS THAT THE MONUMENT WAS SET AT A PROPORTIONATE LOCATION.

(I) I, JAY P. ADAMS, P.L.S. - 2879, CERTIFY THAT THE CORNER LOCATION SHOWN ON THIS RECORD WAS DETERMINED BY ME OR UNDER MY DIRECTION AND CONTROL AND THAT THIS U.S. PUBLIC LAND SURVEY MONUMENT RECORD IS CORRECT AND COMPLETE TO THE BEST OF MY KNOWLEDGE AND BELIEF.



SIGNATURE

5 DECEMBER 2017

DATE

AFFIX LAND SURVEYOR SEAL

