

REMON
43115

GRANT COUNTY U.S. PUBLIC LAND SURVEY MONUMENT RECORD

INSTRUCTIONS: THIS RECORD SHALL SHOW THE LOCATION OF THE CORNER AND SHALL INCLUDE ALL OF THE FOLLOWING ELEMENTS (A THROUGH I).

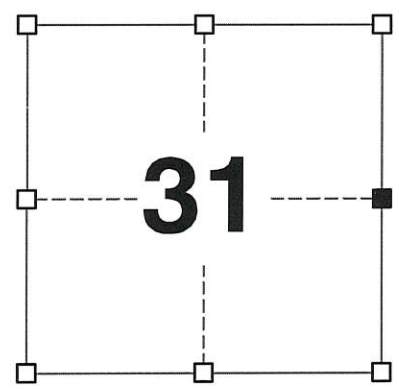
(A) IDENTIFY THE CORNER AS REFERENCED TO THE U.S. PUBLIC LAND SURVEY SYSTEM

■ = CORNER MONUMENT RESTORED

WITNESSES TO CORNER LOCATION:
JAY P. ADAMS
MATTHEW S. SCHNEIDER

GEOGRAPHIC COORDINATES,
 NAD 83 (2011) ADJUSTMENT:
LATITUDE: 42° 46' 38.93531"
LONGITUDE: 90° 45' 40.22609"

WISCONSIN COORDINATE REFERENCE SYSTEM (WISCRS),
 GRANT COUNTY, NAD 83 (2011) ADJUSTMENT:
NORTHING: 497,951.30
EASTING: 805,424.61



SECTION 31
TOWNSHIP 4 NORTH, RANGE 3 WEST
TOWN OF SOUTH LANCASTER

(B) DESCRIBE ANY RECORD EVIDENCE, MONUMENT EVIDENCE, OCCUPATIONAL EVIDENCE, TESTIMONIAL EVIDENCE OR ANY OTHER MATERIAL EVIDENCE YOU CONSIDERED, AND WHETHER THE MONUMENT WAS FOUND OR PLACED.

I COULD FIND NO MONUMENTS OR BEARING TREES FROM THE ORIGINAL GOVERNMENT SURVEY OR THE COUNTY SURVEYORS' SUBSEQUENT RESURVEYS. I RECOVERED THE GRANT COUNTY ALUMINUM MONUMENT REFERENCED BY LARRY AND AARON AUSTIN. THIS LOCATION WAS ACCEPTED AS THE BEST AVAILABLE EVIDENCE OF THE ORIGINAL GOVERNMENT CORNER AND THE MONUMENT WAS REPLACED WITH A 2" x 30" STAINLESS STEEL PIPE WITH A 4" GRANT COUNTY BRASS CAP AS DEPICTED BELOW.

(C) IN THE PLAN VIEW DRAWING BELOW, PROVIDE REFERENCE TIES TO AT LEAST 4 WITNESS MONUMENTS. WITNESS MONUMENTS SHALL BE MADE OF CONCRETE, NATURAL STONE, IRON, BEARING TREES OR ANY OTHER EQUALLY DURABLE MATERIAL. DEPICT THE RELEVANT MONUMENTS AND REFERENCE TIES WITH SUFFICIENT DETAIL TO ENABLE ACCURATE RELOCATION OF THE CORNER IF THE CORNER MONUMENT IS DISTURBED.

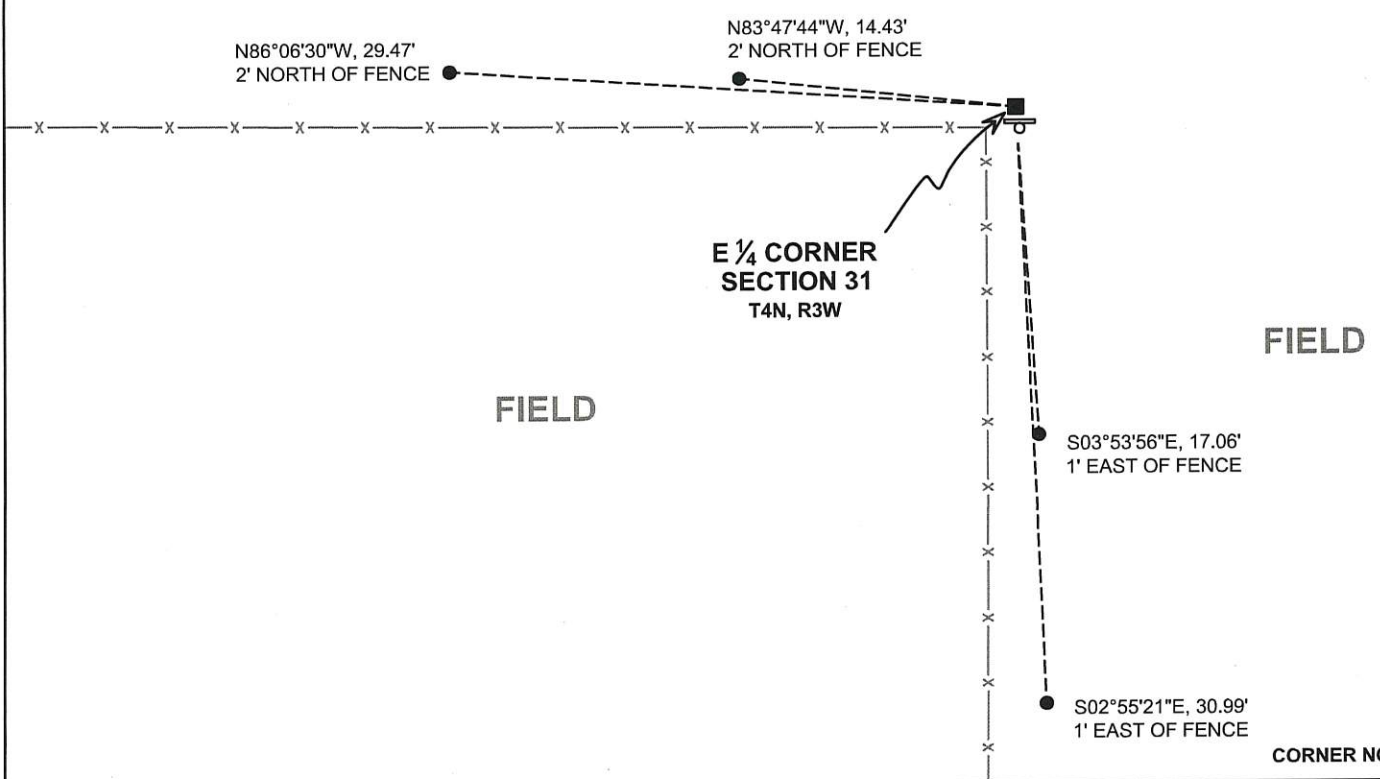
(D)

LEGEND:

- SET 2" x 30" STAINLESS STEEL PIPE w/ 4" BRASS CAP
- 3/4" x 24" IRON ROD SET AS ACCESSORY
- ⊞ "SURVEY MARKER" SIGN 1' +/- SOUTH OF MONUMENT

FIELD

FIELD



FIELD

CORNER NO. 115

(E) DESCRIBE ANY MATERIAL DISCREPANCY BETWEEN THE LOCATION OF THE CORNER AS RESTORED OR REESTABLISHED AND THE LOCATION OF THAT CORNER AS PREVIOUSLY RESTORED OR REESTABLISHED BY DISTANCE AND DIRECTION. SHOW THE DISCREPANCY ON THE PLAN VIEW DRAWING UNDER (D), ABOVE. SHOW THE DISTANCES BETWEEN THE CORNER AS PREVIOUSLY RESTORED OR REESTABLISHED AND (1) THE CORNER AS RESTORED OR REESTABLISHED, AND (2) TO AT LEAST 2 OF THE WITNESS MONUMENTS SHOWN ON THE DRAWING IN (D) ABOVE.

N/A

(F) WAS THE CORNER RESTORED THROUGH ACCEPTANCE OF (1) AN OBLITERATED EVIDENCE LOCATION, OR (2) A FOUND PERPETUATED LOCATION?

(2) A FOUND PERPETUATED LOCATION.

(G&H) WAS THE CORNER REESTABLISHED THROUGH LOST CORNER PROPORTIONATE METHODS? IF SO, SHOW THE METHOD, INCLUDING THE DIRECTIONS AND DISTANCES TO OTHER PUBLIC LAND SURVEY CORNERS USED AS EVIDENCE OR USED FOR PROPORTIONING IN DETERMINING THE CORNER LOCATION.

N/A

CORNER HISTORY

THE ORIGINAL GOVERNMENT CORNER WAS ESTABLISHED BY ROBERT CLARK JR. IN THE FIRST QUARTER OF 1833.

IN A SURVEY DATED 12 MARCH 1881, FREEMAN UTILIZED THIS CORNER.

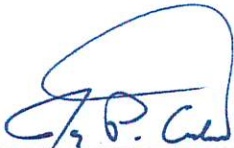
IN A SURVEY DATED 18 OCTOBER 1899, CHARLES SAMPSON PLACED A STONE OVER A DRILL HOLE FILLED WITH LIME.

IN A PLAT OF SURVEY DATED 23 APRIL 1995 AND TIE SHEET DATED AND A TIE SHEET DATED 23 MAY 1995, LARRY AUSTIN SET A GRANT COUNTY ALUMINUM MONUMENT.

SINCE 1995, LARRY AND AARON AUSTIN REPORT FINDING A GRANT COUNTY ALUMINUM MONUMENT AT THIS CORNER IN NUMEROUS PLATS OF SURVEYS AND CERTIFIED SURVEY MAPS.

AFFIX LAND SURVEYOR SEAL

(I) I, JAY P. ADAMS, P.L.S. - 2879, CERTIFY THAT THE CORNER LOCATION SHOWN ON THIS RECORD WAS DETERMINED BY ME OR UNDER MY DIRECTION AND CONTROL AND THAT THIS U.S. PUBLIC LAND SURVEY MONUMENT RECORD IS CORRECT AND COMPLETE TO THE BEST OF MY KNOWLEDGE AND BELIEF.



SIGNATURE

1 MARCH 2018

DATE



Survey Monument Record

TYPE OF MONUMENT GRANT County Alum. Mon.

STATE PLANE COORDINATES: N SET.
E _____

ELEVATION — M.S.L. DATUM: _____

THETA ANGLE: _____

FIELD BOOK: 95-04

PAGE (8)

CORNER NO. _____

SECTION 31

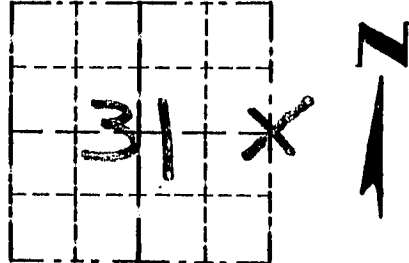
TOWN 4N

RANGE 3W

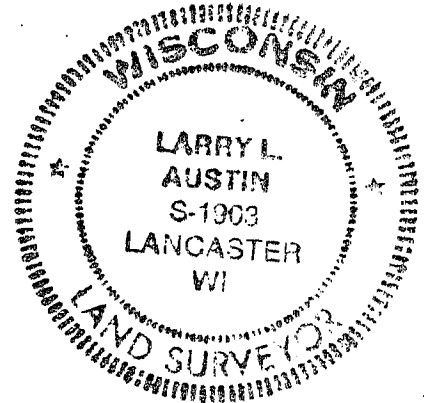
BASIS FOR MONUMENT LOCATION

(Use reverse side if necessary)

CORNER ORIGINALLY SET IN 1932 BY R. CLARK; EXTERIOR BOUNDARY OF THE SECTION WAS RESURVEYED IN 1899 BY CHARLES SAMPSON; I. I. RE-ESTABLISHED THE CORNER AT OCCUPIED LOCATION & VERIFIED BY EDM TRAVERSE.



LOCATION (Indicated by "X")



CERTIFIED CORRECT

Larry L. Austin
Registered Land Surveyor

DATE: 5-23-96

TIE SKETCH

Show at least three (3) ties and monument

LEGEND

● GRANT COUNTY Alum. Mon. SET

○ 1" X 12" IRON PIPE SET

--- EXISTING FENCE

