

REmon

43114

GRANT COUNTY U.S. PUBLIC LAND SURVEY MONUMENT RECORD

INSTRUCTIONS: THIS RECORD SHALL SHOW THE LOCATION OF THE CORNER AND SHALL INCLUDE ALL OF THE FOLLOWING ELEMENTS (A THROUGH I).

(A) IDENTIFY THE CORNER AS REFERENCED TO THE U.S. PUBLIC LAND SURVEY SYSTEM

■ = CORNER MONUMENT RESTORED

WITNESSES TO CORNER LOCATION:

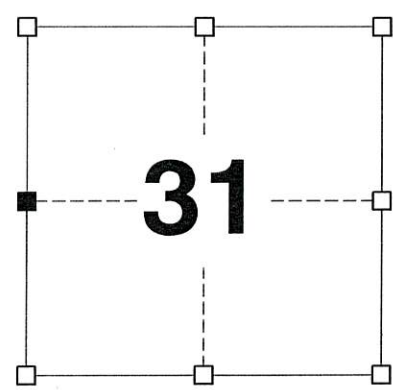
JAY P. ADAMS
MATTHEW S. SCHNEIDER

GEOGRAPHIC COORDINATES,
NAD 83 (2011) ADJUSTMENT:

LATITUDE: 42° 46' 39.54896"
LONGITUDE: 90° 46' 52.42836"

WISCONSIN COORDINATE REFERENCE SYSTEM (WISCRS),
GRANT COUNTY, NAD 83 (2011) ADJUSTMENT:

NORTHING: 498,011.59
EASTING: 800,039.61



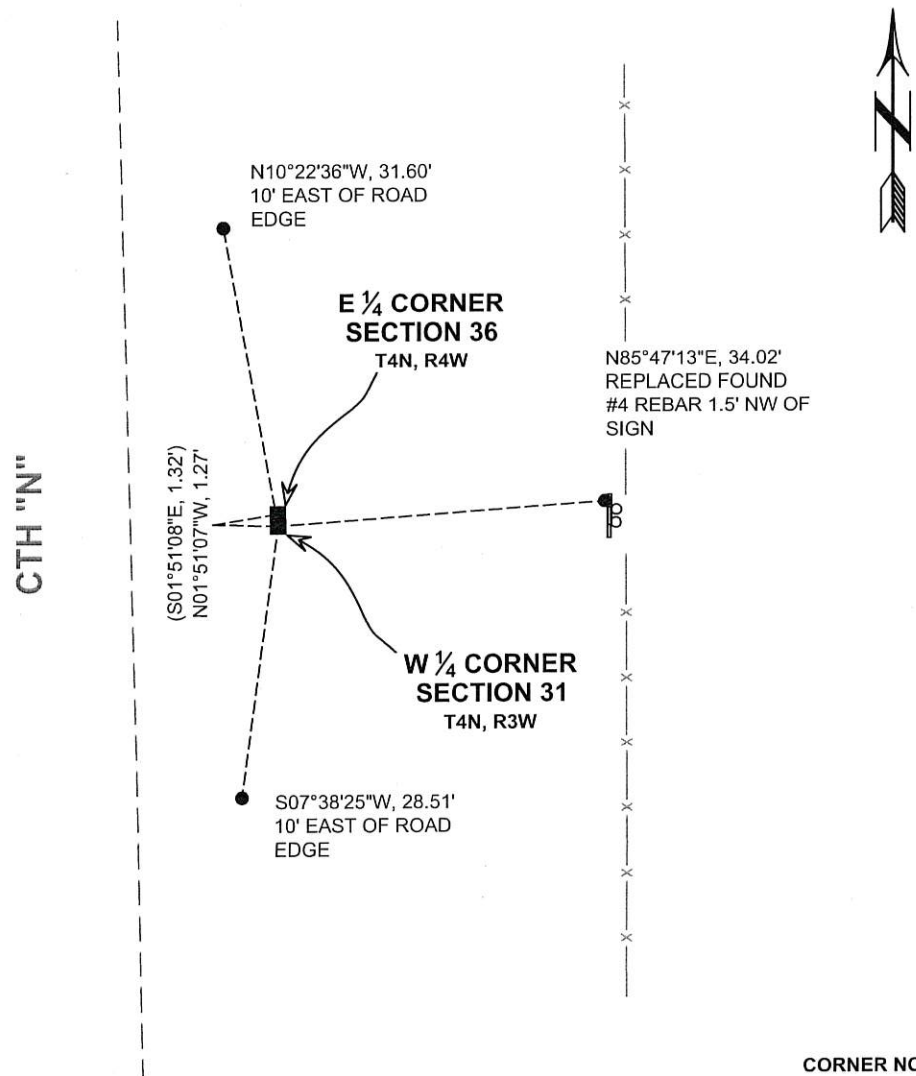
SECTION 31
TOWNSHIP 4 NORTH, RANGE 3 WEST
TOWN OF SOUTH LANCASTER

(B) DESCRIBE ANY RECORD EVIDENCE, MONUMENT EVIDENCE, OCCUPATIONAL EVIDENCE, TESTIMONIAL EVIDENCE OR ANY OTHER MATERIAL EVIDENCE YOU CONSIDERED, AND WHETHER THE MONUMENT WAS FOUND OR PLACED.

I COULD FIND NO MONUMENTS OR BEARING TREES FROM THE HISTORIC COUNTY SURVEYOR'S RESURVEYS. I RECOVERED THE ALUMINUM MONUMENT SET BY AUSTIN AND ACCEPTED IT'S LOCATION AS THE BEST AVAILABLE EVIDENCE OF THE CORNER. I REPLACED THE ALUMINUM MONUMENT WITH A 2" x 30" STAINLESS STEEL PIPE WITH A 4" GRANT COUNTY BRASS CAP AS DEPICTED BELOW.

(C) IN THE PLAN VIEW DRAWING BELOW, PROVIDE REFERENCE TIES TO AT LEAST 4 WITNESS MONUMENTS. WITNESS MONUMENTS SHALL BE MADE OF CONCRETE, NATURAL STONE, IRON, BEARING TREES OR ANY OTHER EQUALLY DURABLE MATERIAL. DEPICT THE RELEVANT MONUMENTS AND REFERENCE TIES WITH SUFFICIENT DETAIL TO ENABLE ACCURATE RELOCATION OF THE CORNER IF THE CORNER MONUMENT IS DISTURBED.

- (D)
- LEGEND:**
- SET 2" x 30" STAINLESS STEEL PIPE w/ 4" BRASS CAP
 - 3/4" x 24" IRON ROD SET AS ACCESSORY
 - "SURVEY MARKER" SIGN 35' +/- EAST OF MONUMENT



(E) DESCRIBE ANY MATERIAL DISCREPANCY BETWEEN THE LOCATION OF THE CORNER AS RESTORED OR REESTABLISHED AND THE LOCATION OF THAT CORNER AS PREVIOUSLY RESTORED OR REESTABLISHED BY DISTANCE AND DIRECTION. SHOW THE DISCREPANCY ON THE PLAN VIEW DRAWING UNDER (D), ABOVE. SHOW THE DISTANCES BETWEEN THE CORNER AS PREVIOUSLY RESTORED OR REESTABLISHED AND (1) THE CORNER AS RESTORED OR REESTABLISHED, AND (2) TO AT LEAST 2 OF THE WITNESS MONUMENTS SHOWN ON THE DRAWING IN (D) ABOVE.

N/A

(F) WAS THE CORNER RESTORED THROUGH ACCEPTANCE OF (1) AN OBLITERATED EVIDENCE LOCATION, OR (2) A FOUND PERPETUATED LOCATION?

(2) A FOUND PERPETUATED LOCATION.

(G&H) WAS THE CORNER REESTABLISHED THROUGH LOST CORNER PROPORTIONATE METHODS? IF SO, SHOW THE METHOD, INCLUDING THE DIRECTIONS AND DISTANCES TO OTHER PUBLIC LAND SURVEY CORNERS USED AS EVIDENCE OR USED FOR PROPORTIONING IN DETERMINING THE CORNER LOCATION.

N/A

CORNER HISTORY

THIS CORNER WAS NOT ESTABLISHED BY THE ORIGINAL GOVERNMENT SURVEY.

IN SURVEYS DATED JANUARY 1877 AND JANUARY 1880, JOEL BARBER FOUND AND TOOK BEARING TREES.

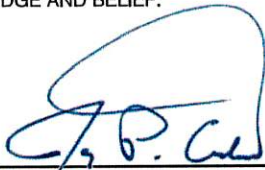
IN A SURVEY DATED 18 OCTOBER 1899, SAMPSON FOUND BARBER'S BEARING TREES AND DRILLED A HOLE WITH A CROWBAR AND FILLED IT WITH LIME.

IN A TIE SHEET DATED 20 MAY 1996 LARRY AUSTIN SET A GRANT COUNTY ALUMINUM MONUMENT AT THIS CORNER BASED ON TIES TO THE HURRICANE CEMETERY.

SINCE THAT TIME, NUMEROUS SURVEYS HAVE REFERENCED AUSTIN'S ALUMINUM MONUMENT AT THE CORNER.

AFFIX LAND SURVEYOR SEAL

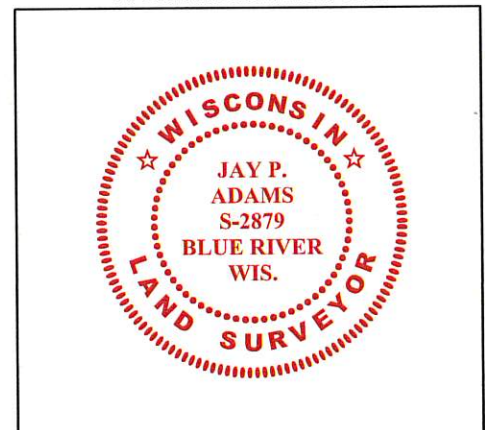
(I) I, JAY P. ADAMS, P.L.S. - 2879, CERTIFY THAT THE CORNER LOCATION SHOWN ON THIS RECORD WAS DETERMINED BY ME OR UNDER MY DIRECTION AND CONTROL AND THAT THIS U.S. PUBLIC LAND SURVEY MONUMENT RECORD IS CORRECT AND COMPLETE TO THE BEST OF MY KNOWLEDGE AND BELIEF.



26 MAY 2018

SIGNATURE

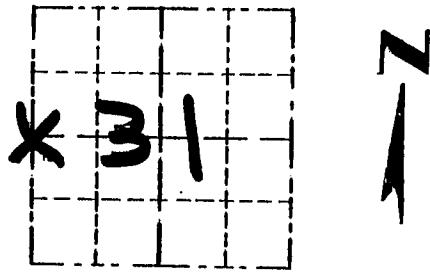
DATE



Survey Monument Record

CORNER NO. _____
 SECTION 31
 TOWN 4 N
 RANGE 3 W

TYPE OF MONUMENT GRANT County Mon. SET
 STATE PLANE COORDINATES: N (ALUM.)
 E _____
 ELEVATION — M.S.L. DATUM: _____
 THETA ANGLE: _____
 FIELD BOOK: 95-04
 PAGE _____

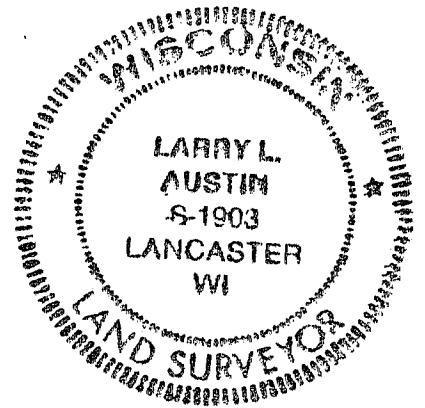


LOCATION
(Indicated by "X")

BASIS FOR MONUMENT LOCATION

(Use reverse side if necessary)

CORNER ORIGINALLY SET IN 1832 BY SIBLEY; EXTERIOR BOUNDARIES OF THE SECTION RESURVEYED IN 1899 BY CHARLES SAMPTON. JOHN BUSER LOCATED THE CORNER IN 1931 AND REFERENCED IT TO CORNERS OF HURRICANE CEMETERY. I RE-ESTABLISHED IT BASED ON CORNERS OF CEMETERY. VERIFIED ITS LOCATION BY EDM TRAVERSE OF THE AREA.



CERTIFIED CORRECT

Larry L. Austin
 Registered Land Surveyor

DATE: 5/20/96

TIE SKETCH

Show at least three (3) ties and monument

