

REMON

43112

GRANT COUNTY U.S. PUBLIC LAND SURVEY MONUMENT RECORD

INSTRUCTIONS: THIS RECORD SHALL SHOW THE LOCATION OF THE CORNER AND SHALL INCLUDE ALL OF THE FOLLOWING ELEMENTS (A THROUGH I).

(A) IDENTIFY THE CORNER AS REFERENCED TO THE U.S. PUBLIC LAND SURVEY SYSTEM

■ = CORNER MONUMENT RESTORED

WITNESSES TO CORNER LOCATION:

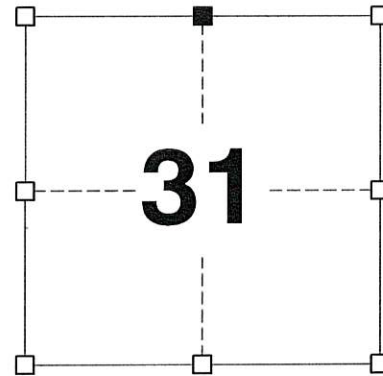
JAY P. ADAMS
MATTHEW S. SCHNEIDER
PAIGE O. JELINEK

GEOGRAPHIC COORDINATES,
NAD 83 (2011) ADJUSTMENT:

LATITUDE: 42° 47' 05.44388"
LONGITUDE: 90° 46' 15.74240"

WISCONSIN COORDINATE REFERENCE SYSTEM (WISCRS),
GRANT COUNTY, NAD 83 (2011) ADJUSTMENT:

NORTHING: 500,634.05
EASTING: 802,774.81



SECTION 31
TOWNSHIP 4 NORTH, RANGE 3 WEST
TOWN OF SOUTH LANCASTER

(B) DESCRIBE ANY RECORD EVIDENCE, MONUMENT EVIDENCE, OCCUPATIONAL EVIDENCE, TESTIMONIAL EVIDENCE OR ANY OTHER MATERIAL EVIDENCE YOU CONSIDERED, AND WHETHER THE MONUMENT WAS FOUND OR PLACED.

I COULD FIND NO MONUMENTS OR BEARING TREES FROM THE ORIGINAL GOVERNMENT SURVEY OR THE COUNTY SURVEYORS' SUBSEQUENT RESURVEYS. I RECOVERED AN UNRECOGNIZABLE PIECE OF METAL BURIED 8 INCHES DOWN IN THE INTERSECTION BUT FOUND THAT THE LOCATION OF THIS PIECE OF METAL DID NOT MATCH THE BEARING AND DISTANCES TO TIES RECORDED IN THE MOST RECENT TIE SHEET BY LARRY AUSTIN. I RECOVERED THE RAILROAD SPIKE REFERENCED BY AUSTIN AND ACCEPTED THIS LOCATION AS THE BEST AVAILABLE EVIDENCE OF THE ORIGINAL GOVERNMENT CORNER. I REMONUMENTED THIS CORNER WITH A 1.25" x 18" IRON ROD AS DEPICTED BELOW.

(C) IN THE PLAN VIEW DRAWING BELOW, PROVIDE REFERENCE TIES TO AT LEAST 4 WITNESS MONUMENTS. WITNESS MONUMENTS SHALL BE MADE OF CONCRETE, NATURAL STONE, IRON, BEARING TREES OR ANY OTHER EQUALLY DURABLE MATERIAL. DEPICT THE RELEVANT MONUMENTS AND REFERENCE TIES WITH SUFFICIENT DETAIL TO ENABLE ACCURATE RELOCATION OF THE CORNER IF THE CORNER MONUMENT IS DISTURBED.

(D)

- LEGEND:**
- SET 1.25" x 18" IRON ROD
 - 3/4" x 24" IRON ROD SET AS ACCESSORY
 - "SURVEY MARKER" SIGN 55' +/- NE OF MONUMENT

FIELD

(N32°49'44"W)(51.01')
N34°18'12"W, 51.05'
REPLACED FOUND
#4 REBAR 1' NORTH OF
STOP SIGN

(N23°55'17"E) (54.21')
N22°21'10"E, 54.43'
REPLACED FOUND
#3 REBAR 0.5' SW OF
FENCE POST

FIELD



N 1/4 CORNER
SECTION 31
T4N, R3W

CTH "N"

(S47°40'04"W)(38.43')
S46°05'44"W, 38.46'
REPLACED FOUND
#4 REBAR 1' NORTH OF
HOUSE

HOUSE

HURRICANE ROAD

(S38°51'18"E) (45.46')
S40°20'00"E, 45.46'
REPLACED FOUND
#4 REBAR 2' NW OF
STOP SIGN

FIELD

CORNER NO. 112

(E) DESCRIBE ANY MATERIAL DISCREPANCY BETWEEN THE LOCATION OF THE CORNER AS RESTORED OR REESTABLISHED AND THE LOCATION OF THAT CORNER AS PREVIOUSLY RESTORED OR REESTABLISHED BY DISTANCE AND DIRECTION. SHOW THE DISCREPANCY ON THE PLAN VIEW DRAWING UNDER (D), ABOVE. SHOW THE DISTANCES BETWEEN THE CORNER AS PREVIOUSLY RESTORED OR REESTABLISHED AND (1) THE CORNER AS RESTORED OR REESTABLISHED, AND (2) TO AT LEAST 2 OF THE WITNESS MONUMENTS SHOWN ON THE DRAWING IN (D) ABOVE.

N/A

(F) WAS THE CORNER RESTORED THROUGH ACCEPTANCE OF (1) AN OBLITERATED EVIDENCE LOCATION, OR (2) A FOUND PERPETUATED LOCATION?

(2) A FOUND PERPETUATED LOCATION.

(G&H) WAS THE CORNER REESTABLISHED THROUGH LOST CORNER PROPORTIONATE METHODS? IF SO, SHOW THE METHOD, INCLUDING THE DIRECTIONS AND DISTANCES TO OTHER PUBLIC LAND SURVEY CORNERS USED AS EVIDENCE OR USED FOR PROPORTIONING IN DETERMINING THE CORNER LOCATION.

N/A

CORNER HISTORY

THE ORIGINAL GOVERNMENT CORNER WAS ESTABLISHED BY ROBERT CLARK JR. IN THE FIRST QUARTER OF 1833.

IN A SURVEY DATED 14 MAY 1840 FREEMAN WAS AT THIS CORNER.

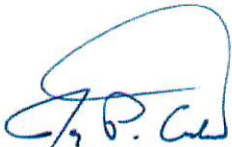
IN A SURVEY DATED 18 OCTOBER 1899, CHARLES SAMPSON PLACED A STONE AT THIS CORNER.

IN A PLAT OF SURVEY AND TIE SHEET DATED 9 JANUARY 1990, LARRY AUSTIN NOTES A RAILROAD SPIKE.

SINCE 1990, LARRY AND AARON AUSTIN NOTE FINDING A RAILROAD SPIKE AT THIS LOCATION IN NUMEROUS PLATS OF SURVEY AND AN UPDATED TIE SHEET BY LARRY AUSTIN ON 16 SEPTEMBER 2003.

AFFIX LAND SURVEYOR SEAL

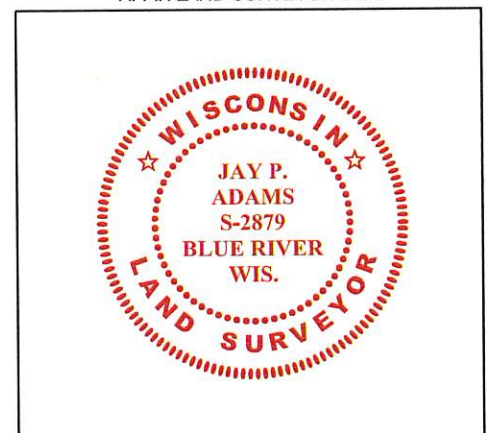
(I) I, JAY P. ADAMS, P.L.S. - 2879, CERTIFY THAT THE CORNER LOCATION SHOWN ON THIS RECORD WAS DETERMINED BY ME OR UNDER MY DIRECTION AND CONTROL AND THAT THIS U.S. PUBLIC LAND SURVEY MONUMENT RECORD IS CORRECT AND COMPLETE TO THE BEST OF MY KNOWLEDGE AND BELIEF.



26 MAY 2018

SIGNATURE

DATE



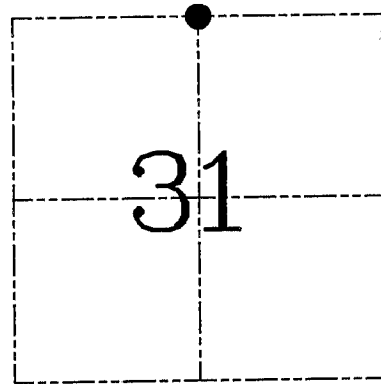
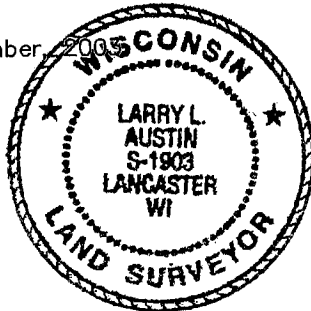
U.S. PUBLIC LAND SURVEY MONUMENT RECORD - GRANT COUNTY, WI
Section 31, Town 4 North Range 3 West, Town of South Lancaster

CERTIFICATE

I, Larry L. Austin, do hereby certify that the corner location on this record was determined by me and/or under my direct supervision and that this U.S. public land survey monument record is correct and complete to the best of my knowledge and belief.

Dated this 16th day of September, 2009

Larry L. Austin
 Larry L. Austin S-1903



● = CORNER LOCATION

HISTORY OF CORNER ESTABLISHMENT

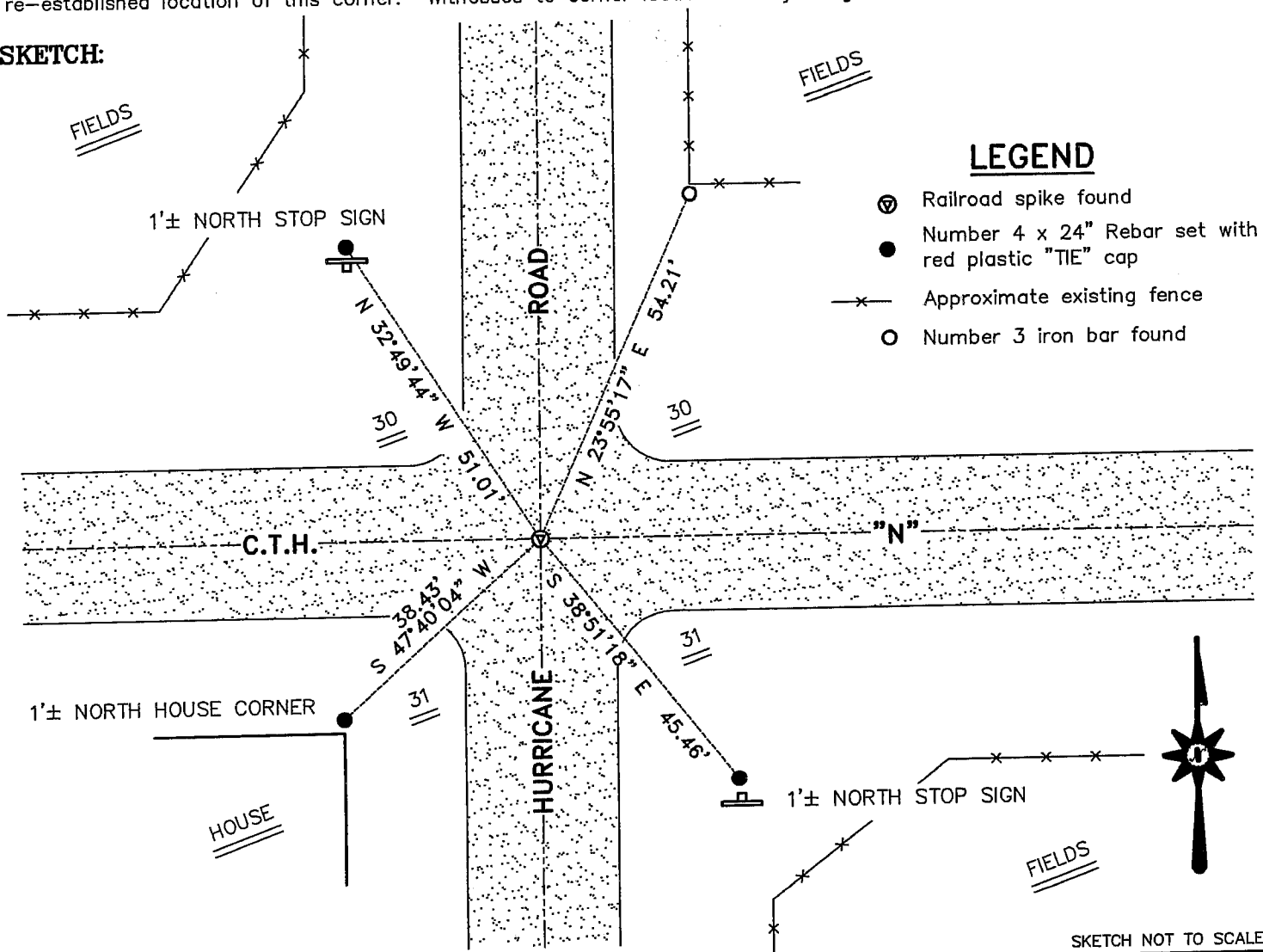
Corner was originally set in 1833 by Clark.
 In 1990 I set and tied the corner.
 No other record of the corner was found.

DESCRIPTION OF CORNER EVIDENCE FOUND

I found and accepted the corner location. I set new ties for the corner. Verified this location using EDM & GPS methods.

DESCRIPTION OF CORNER AND WITNESS MONUMENTS, references and accessories used to perpetuate the original or re-established location of this corner. Witnesses to corner location Bobby Sedgwick & Shelby Blindert & Brad Digman

SKETCH:



SKETCH NOT TO SCALE

AUSTIN ENGINEERING, LLC

4211 HWY 81 EAST, LANCASTER, WI 53813
 PHONE 608-723-6363 FAX 608-723-6702

FIELDBOOK: TDS RNGR, 2311
 G:\T4NR3W\31
 H:\TIE\T4NR3W\112
 JOB NUMBER 03S190

DRAWN BY: SW AUSTIN
 APPROVED: LL AUSTIN

CORNER NUMBER 112

S. Lancaster

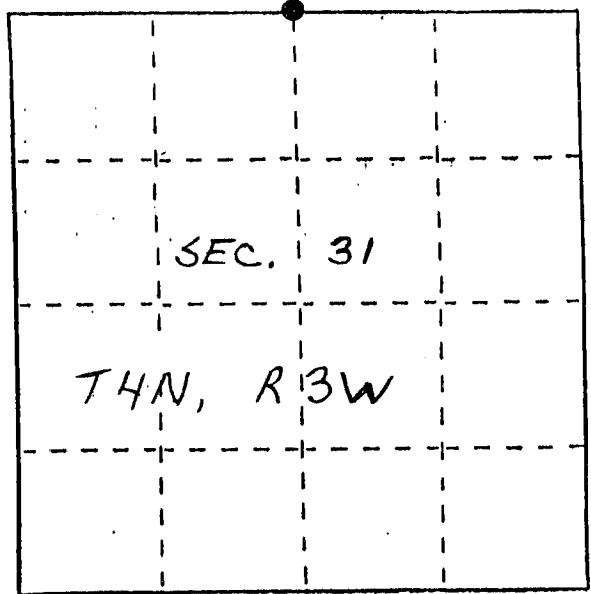
U. S. PUBLIC LAND SURVEY MONUMENT RECORD

INSTRUCTIONS: This record shall show the location of the corner and shall include all of the following nine elements (a through i).

(a) Identify the corner by reference to the U.S. public land survey system.

O = Corner monument restored.

NORTH 1/4 CORNER SEC. 31
T4N, R3W; SOUTH LANCASTER
TWP. GRANT, CO. WI.

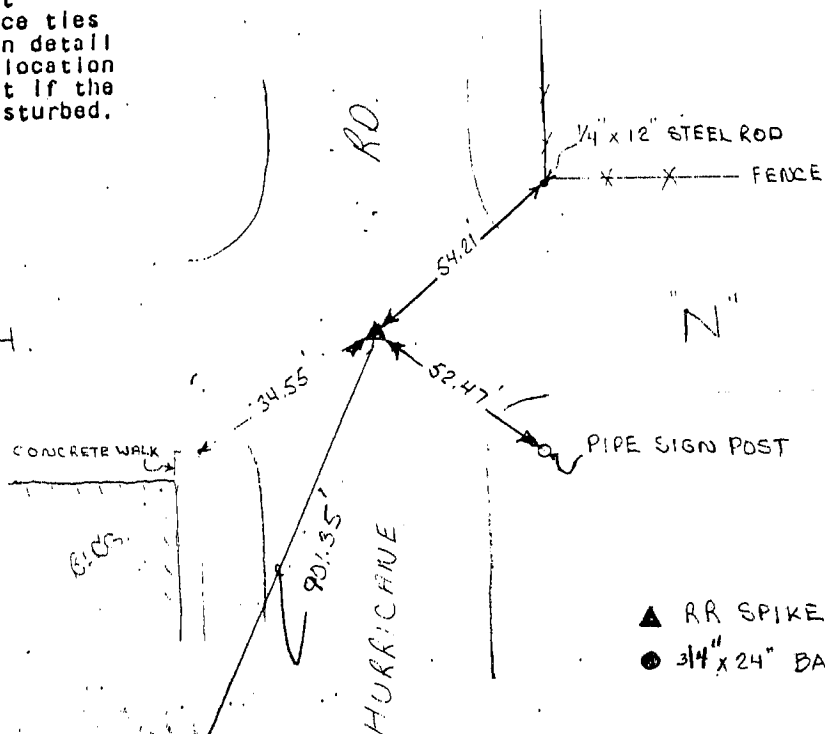


(b) Describe any record evidence, monument evidence; occupational evidence, testimonial evidence or any other material evidence you considered, and whether the monument was found or placed.

CORNER WAS PLACED BASED ON THE LAST RECORD OF THE CORNER - DEPT. OF TRANSP. PLANS OF C.T.H. "N" (PROT. DESIGNA. # S0572(4)/5934-1-71 & VERIFIED BY EDM TRAVERSE

(c) In the plan view drawing below, provide reference ties to at least 4 witness monuments, or, if the location is within a municipality, to at least 2 witness monuments. (Witness monuments shall be made of concrete, natural stone, iron or other equally durable material.) Describe witness monuments.

(d) Show a plan view drawing depicting the relevant monuments and reference ties which is sufficient in detail to enable accurate relocation of the corner monument if the corner monument is disturbed. Indicate north.



N
NOT TO SCALE

GRANT COUNTY CLERK RECEIVED

SEP 20 1990

▲ RR SPIKE
● 3/4" x 24" BAR

PLG

(e) Describe any material discrepancy between the location of the corner as restored or reestablished and the location of that corner as previously restored or reestablished by distance and direction. Show the discrepancy on the plan view drawing under (d), above. Show the distances between the corner as previously restored or reestablished and (1) the corner as restored or reestablished, and (2) to at least 2 of the witness monuments shown on the drawing in (d), above.

NONE

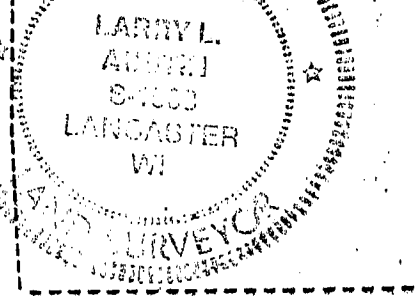
(f) Was the corner restored through acceptance of (1) an obliterated evidence location, or, (2) a found perpetuated location?

(1) OBLITERATED EVIDENCE LOCATION

(g&h) Was the corner reestablished through lost corner proportionate methods? If so, show the method, including the directions and distances to other public land survey corners used as evidence or used for proportioning in determining the corner location?

NO

Affix Land Surveyor Seal



LARRY AUSTIN

(i) I, LARRY AUSTIN (type or print name) certify that the corner location shown on this record was determined by me or under my direction and control and that this U.S. Public Land Survey Monument Record is correct and complete to the best of my knowledge and belief.

Larry R. Austin

1/9/90
Date