

GRANT COUNTY
U.S. PUBLIC LAND SURVEY MONUMENT RECORD

(E) DESCRIBE ANY MATERIAL DISCREPANCY BETWEEN THE LOCATION OF THE CORNER AS RESTORED OR REESTABLISHED AND THE LOCATION OF THAT CORNER AS PREVIOUSLY RESTORED OR REESTABLISHED BY DISTANCE AND DIRECTION. SHOW THE DISCREPANCY ON THE PLAN VIEW DRAWING UNDER (D), ABOVE. SHOW THE DISTANCES BETWEEN THE CORNER AS PREVIOUSLY RESTORED OR REESTABLISHED AND (1) THE CORNER AS RESTORED OR REESTABLISHED, AND (2) TO AT LEAST 2 OF THE WITNESS MONUMENTS SHOWN ON THE DRAWING IN (D) ABOVE.

N/A

(F) WAS THE CORNER RESTORED THROUGH ACCEPTANCE OF (1) AN OBLITERATED EVIDENCE LOCATION, OR (2) A FOUND PERPETUATED LOCATION?

FOUND AT PERPETUATED LOCATION

(G&H) WAS THE CORNER REESTABLISHED THROUGH LOST CORNER PROPORTIONATE METHODS? IF SO, SHOW THE METHOD, INCLUDING THE DIRECTIONS AND DISTANCES TO OTHER PUBLIC LAND SURVEY CORNERS USED AS EVIDENCE OR USED FOR PROPORTIONING IN DETERMINING THE CORNER LOCATION.

N/A

1. CORNER HISTORY: ORIGINAL CORNER SET IN 1833 BY ROBERT CLARK JR.
2. IN 1899, BOOK D, PAGE 284, CHARLES SAMPSON FOUND OLD STONE AND NO ACCESSORIES. HE THEN PLACE A 8 1/2" X 4 1/2" X 25" OVER DRILLED HOLE AND FILLED WITH LIME.
3. IN 1996, BOOK W, PAGE 77, LARRY L. AUSTIN SET A 3/4" REBAR AND RECORDED A SURVEY MONUMENT RECORD.
4. IN 2013, BOOK 34, PAGE 67, AARON J. AUSTIN FOUND 3/4" REBAR.
5. IN 2018, JAY P. ADAMS FOUND A 3/4" REBAR AND ACCEPTED IT AS THE PERPETUATED POSITION. HE SET ACCESSORY TIES AND RECORDED A U.S. PUBLIC LAND SURVEY MONUMENT RECORD.
6. IN 2020 GREGG STROEING ACCEPTED THIS POSITION OF THE PERPETUATED GRANT COUNTY MONUMENT SET BY LARRY L. AUSTIN IN 1996 AND RE-CERTIFIED BY JAY P. ADAMS IN 2018. UPDATED AND SET NEW TIES AS SHOWN IN PART C

(I) I, GREGG STROEING P.L.S. - 2753, CERTIFY THAT THE CORNER LOCATION SHOWN ON THIS RECORD WAS DETERMINED BY ME OR UNDER MY DIRECTION AND CONTROL AND THAT THIS U.S. PUBLIC LAND SURVEY MONUMENT RECORD IS CORRECT AND COMPLETE TO THE BEST OF MY KNOWLEDGE AND BELIEF.

SIGNATURE

12/09/2020

DATE



CORNER NO. 111

REMON
43111

GRANT COUNTY U.S. PUBLIC LAND SURVEY MONUMENT RECORD

INSTRUCTIONS: THIS RECORD SHALL SHOW THE LOCATION OF THE CORNER AND SHALL INCLUDE ALL OF THE FOLLOWING ELEMENTS (A THROUGH I).

(A) IDENTIFY THE CORNER AS REFERENCED TO THE U.S. PUBLIC LAND SURVEY SYSTEM

■ = CORNER MONUMENT RESTORED

WITNESSES TO CORNER LOCATION:

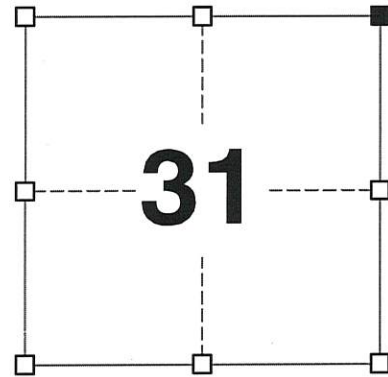
JAY P. ADAMS
STEVEN A. ALT

GEOGRAPHIC COORDINATES,
NAD 83 (2011) ADJUSTMENT:

LATITUDE: 42° 47' 05.17857"
LONGITUDE: 90° 45' 40.26588"

WISCONSIN COORDINATE REFERENCE SYSTEM (WISCRS),
GRANT COUNTY, NAD 83 (2011) ADJUSTMENT:

NORTHING: 500,608.25
EASTING: 805,420.42



SECTION 31
TOWNSHIP 4 NORTH, RANGE 3 WEST
TOWN OF SOUTH LANCASTER

(B) DESCRIBE ANY RECORD EVIDENCE, MONUMENT EVIDENCE, OCCUPATIONAL EVIDENCE, TESTIMONIAL EVIDENCE OR ANY OTHER MATERIAL EVIDENCE YOU CONSIDERED, AND WHETHER THE MONUMENT WAS FOUND OR PLACED.

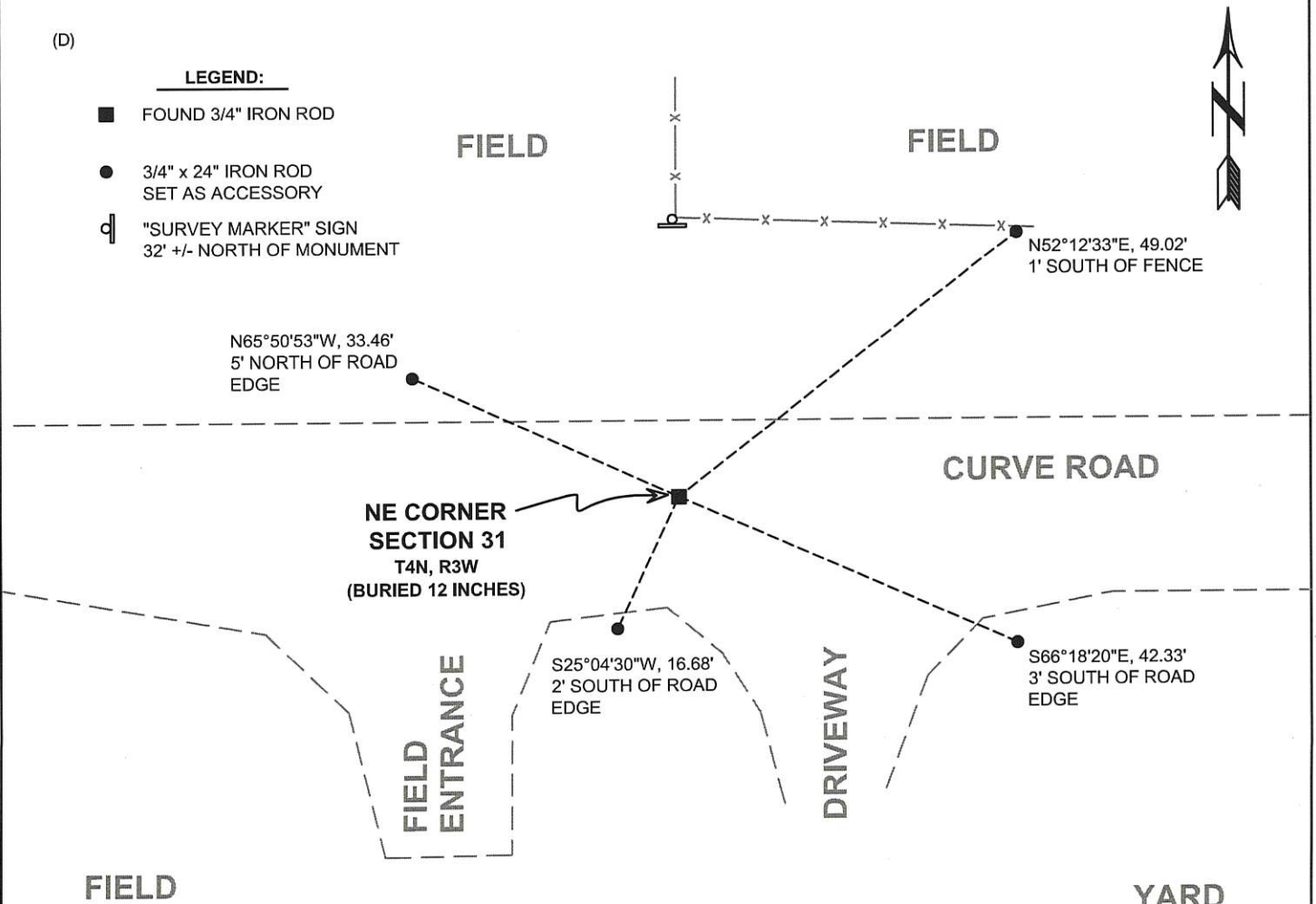
I COULD FIND NO MONUMENTS OR BEARING TREES FROM THE ORIGINAL GOVERNMENT SURVEY OR THE COUNTY SURVEYORS' SUBSEQUENT RESURVEYS. I RECOVERED THE 3/4" REBAR REFERENCED BY LARRY AND AARON AUSTIN 12 INCHES BELOW THE ROADWAY SURFACE. THIS LOCATION WAS ACCEPTED AS THE BEST AVAILABLE EVIDENCE OF THE ORIGINAL GOVERNMENT CORNER AND THE MONUMENT WAS LEFT IN PLACE BECAUSE OF EXCEPTIONAL STABILITY.

(C) IN THE PLAN VIEW DRAWING BELOW, PROVIDE REFERENCE TIES TO AT LEAST 4 WITNESS MONUMENTS. WITNESS MONUMENTS SHALL BE MADE OF CONCRETE, NATURAL STONE, IRON, BEARING TREES OR ANY OTHER EQUALLY DURABLE MATERIAL. DEPICT THE RELEVANT MONUMENTS AND REFERENCE TIES WITH SUFFICIENT DETAIL TO ENABLE ACCURATE RELOCATION OF THE CORNER IF THE CORNER MONUMENT IS DISTURBED.

(D)

LEGEND:

- FOUND 3/4" IRON ROD
- 3/4" x 24" IRON ROD SET AS ACCESSORY
- ⊕ "SURVEY MARKER" SIGN 32' +/- NORTH OF MONUMENT



(E) DESCRIBE ANY MATERIAL DISCREPANCY BETWEEN THE LOCATION OF THE CORNER AS RESTORED OR REESTABLISHED AND THE LOCATION OF THAT CORNER AS PREVIOUSLY RESTORED OR REESTABLISHED BY DISTANCE AND DIRECTION. SHOW THE DISCREPANCY ON THE PLAN VIEW DRAWING UNDER (D), ABOVE. SHOW THE DISTANCES BETWEEN THE CORNER AS PREVIOUSLY RESTORED OR REESTABLISHED AND (1) THE CORNER AS RESTORED OR REESTABLISHED, AND (2) TO AT LEAST 2 OF THE WITNESS MONUMENTS SHOWN ON THE DRAWING IN (D) ABOVE.

N/A

(F) WAS THE CORNER RESTORED THROUGH ACCEPTANCE OF (1) AN OBLITERATED EVIDENCE LOCATION, OR (2) A FOUND PERPETUATED LOCATION?

(2) A FOUND PERPETUATED LOCATION.

(G&H) WAS THE CORNER REESTABLISHED THROUGH LOST CORNER PROPORTIONATE METHODS? IF SO, SHOW THE METHOD, INCLUDING THE DIRECTIONS AND DISTANCES TO OTHER PUBLIC LAND SURVEY CORNERS USED AS EVIDENCE OR USED FOR PROPORTIONING IN DETERMINING THE CORNER LOCATION.

N/A

CORNER HISTORY

THE ORIGINAL GOVERNMENT CORNER WAS ESTABLISHED BY ROBERT CLARK JR. IN THE FIRST QUARTER OF 1833.

IN A SURVEY DATED 14 MAY 1840 FREEMAN WAS AT THIS CORNER.

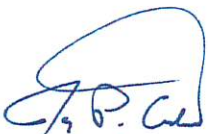
IN A SURVEY DATED 18 OCTOBER 1899, CHARLES SAMPSON PLACED NEW STONE IN PLACE OF AN OLD STONE AT THIS CORNER.

IN A PLAT OF SURVEY DATED 23 APRIL 1995 AND A TIE SHEET DATED 22 APRIL 1995 LARRY AUSTIN SET A 3/4" x 24" IRON ROD.

SINCE 1995, THE 3/4" IRON ROD HAS BEEN RECOVERED BY LARRY AND AARON AUSTIN NUMEROUS TIMES DOCUMENTED IN PLATS OF SURVEY AND CERTIFIED SURVEY MAPS.

AFFIX LAND SURVEYOR SEAL

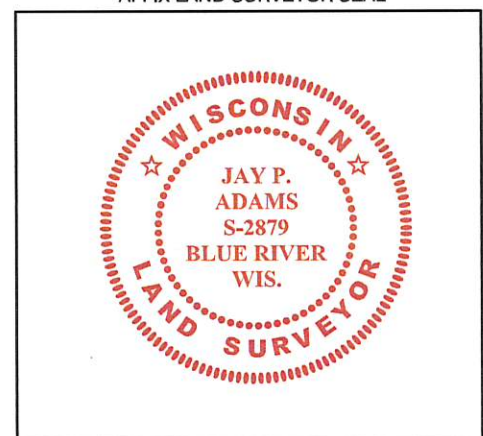
(I) I, JAY P. ADAMS, P.L.S. - 2879, CERTIFY THAT THE CORNER LOCATION SHOWN ON THIS RECORD WAS DETERMINED BY ME OR UNDER MY DIRECTION AND CONTROL AND THAT THIS U.S. PUBLIC LAND SURVEY MONUMENT RECORD IS CORRECT AND COMPLETE TO THE BEST OF MY KNOWLEDGE AND BELIEF.



SIGNATURE

1 MARCH 2018

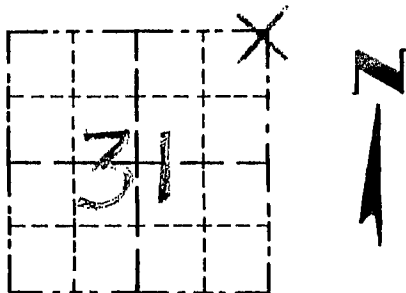
DATE



Survey Monument Record

CORNER NO. 111
 SECTION 31
 TOWN 4 N
 RANGE 3 W

TYPE OF MONUMENT 3/4" x 24" IRON BAR SET
 STATE PLANE COORDINATES: N _____
 E _____
 ELEVATION — M.S.L. DATUM: _____
 THETA ANGLE: _____
 FIELD BOOK: 9504
 PAGE 6



LOCATION
 (Indicated by "X")

BASIS FOR MONUMENT LOCATION

(Use reverse side if necessary)

Show info such as: History of corner, with reference to Vol. and pg., dates, surveyor; exact description of monument replaced; if location computed, by taped or EDM traverse; landowner, remarks, etc.

SEAL:

CORNER ORIGINALLY SET IN 1833 BY CLARK & EXTERIOR BOUNDARY OF THE SECTION WAS RESURVEYED IN 1899 BY CHARLES SAMPSON; I RE-ESTABLISHED THE CORNER AT OCCUPIED LOCATION & VERIFIED BY EDM TRAVERSE.

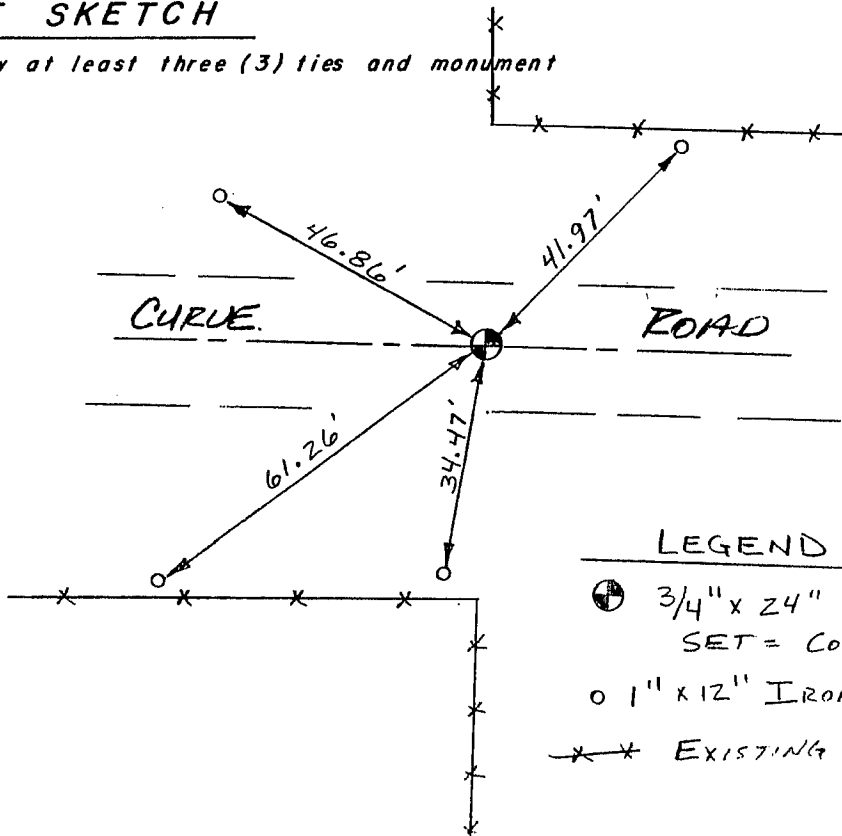
CERTIFIED CORRECT

Rodney R. Rust
 Registered Land Surveyor

DATE: 4/22/95

TIE SKETCH

Show at least three (3) ties and monument



LEGEND

- ⊕ 3/4" x 24" SMOOTH BAR SET = CORNER
- 1" x 12" IRON PIPE SET
- *** EXISTING FENCE

N
 NO SCALE