

## GRANT COUNTY U.S. PUBLIC LAND SURVEY MONUMENT RECORD

INSTRUCTIONS: THIS RECORD SHALL SHOW THE LOCATION OF THE CORNER AND SHALL INCLUDE ALL OF THE FOLLOWING ELEMENTS (A THROUGH I).

(A) IDENTIFY THE CORNER AS REFERENCED TO THE U.S. PUBLIC LAND SURVEY SYSTEM

■ = CORNER MONUMENT RESTORED

WITNESSES TO CORNER LOCATION:

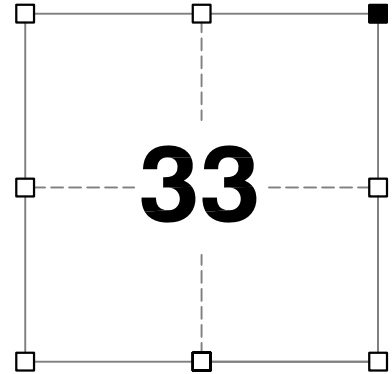
JAY P. ADAMS  
STEVEN A. ALT

GEOGRAPHIC COORDINATES,  
NAD 83 (2011) ADJUSTMENT:

LATITUDE: 42° 47' 03.97074"  
LONGITUDE: 90° 43' 19.63539"

WISCONSIN COORDINATE REFERENCE SYSTEM (WISCRS),  
GRANT COUNTY, NAD 83 (2011) ADJUSTMENT:

NORTHING: 500,493.22  
EASTING: 815,907.80



SECTION 33  
TOWNSHIP 4 NORTH, RANGE 3 WEST  
TOWN OF SOUTH LANCASTER

(B) DESCRIBE ANY RECORD EVIDENCE, MONUMENT EVIDENCE, OCCUPATIONAL EVIDENCE, TESTIMONIAL EVIDENCE OR ANY OTHER MATERIAL EVIDENCE YOU CONSIDERED, AND WHETHER THE MONUMENT WAS FOUND OR PLACED.

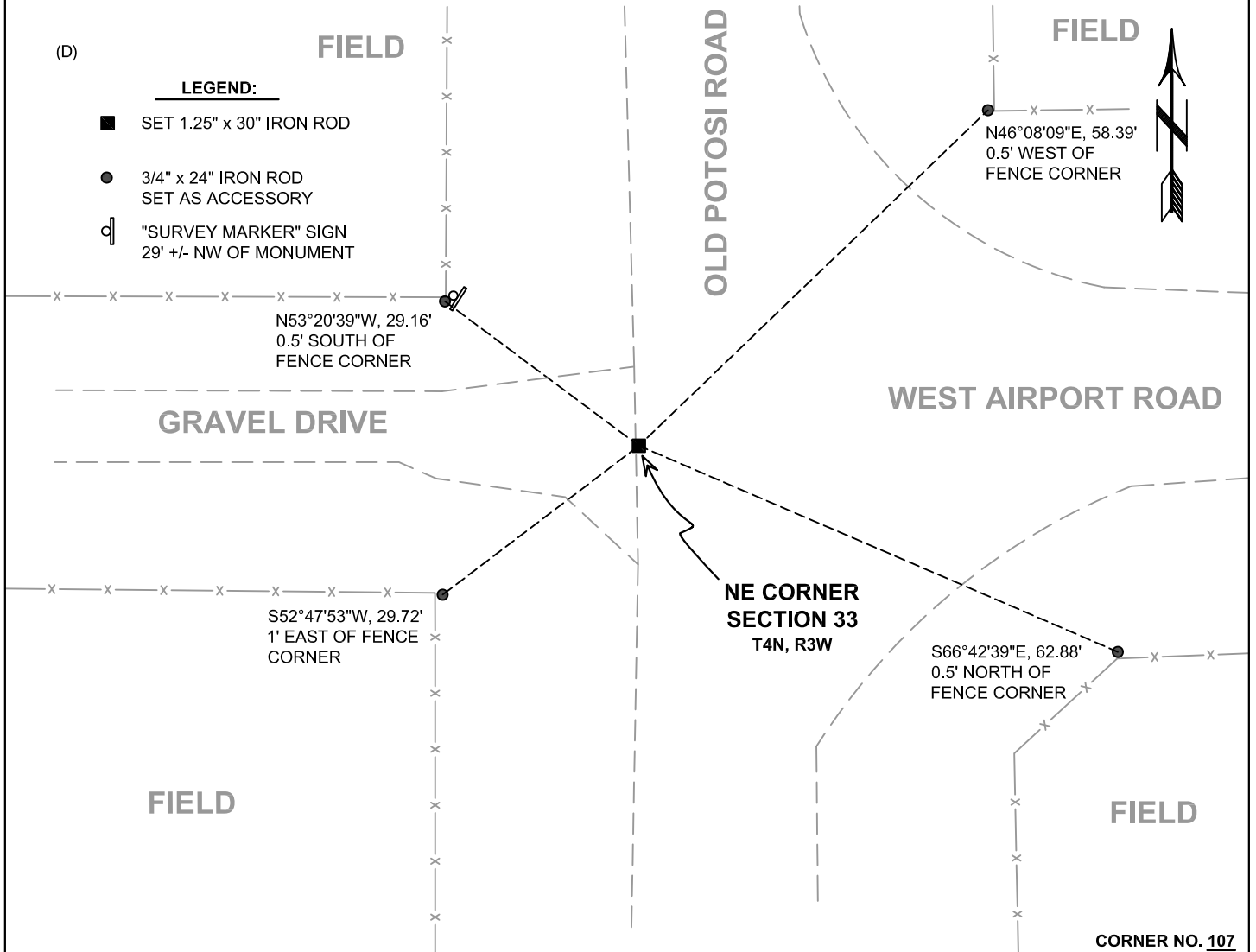
**I COULD FIND NO MONUMENTS OR BEARING TREES FROM THE ORIGINAL GOVERNMENT SURVEY OR THE COUNTY SURVEYORS' SUBSEQUENT RESURVEYS. I REESTABLISHED THIS CORNER USING OCCUPATIONAL EVIDENCE EAST AND WEST OF THE CORNER AS WELL AS EXAMINATION OF HISTORICAL AERIAL IMAGERY AND HISTORIC PLAT BOOKS. SAID LOCATION FELL IN THE WEST EDGE OF OLD POTOSI ROAD AND IN THE CENTERLINE OF A GRAVEL DRIVE (FORMER ROADWAY) TO THE WEST. THIS LOCATION WAS REMONUMENTED WITH A 1.25" x 30" IRON ROD AS DEPICTED BELOW.**

(C) IN THE PLAN VIEW DRAWING BELOW, PROVIDE REFERENCE TIES TO AT LEAST 4 WITNESS MONUMENTS. WITNESS MONUMENTS SHALL BE MADE OF CONCRETE, NATURAL STONE, IRON, BEARING TREES OR ANY OTHER EQUALLY DURABLE MATERIAL. DEPICT THE RELEVANT MONUMENTS AND REFERENCE TIES WITH SUFFICIENT DETAIL TO ENABLE ACCURATE RELOCATION OF THE CORNER IF THE CORNER MONUMENT IS DISTURBED.

(D)

**LEGEND:**

- SET 1.25" x 30" IRON ROD
- 3/4" x 24" IRON ROD SET AS ACCESSORY
- ⊞ "SURVEY MARKER" SIGN 29' +/- NW OF MONUMENT



(E) DESCRIBE ANY MATERIAL DISCREPANCY BETWEEN THE LOCATION OF THE CORNER AS RESTORED OR REESTABLISHED AND THE LOCATION OF THAT CORNER AS PREVIOUSLY RESTORED OR REESTABLISHED BY DISTANCE AND DIRECTION. SHOW THE DISCREPANCY ON THE PLAN VIEW DRAWING UNDER (D), ABOVE. SHOW THE DISTANCES BETWEEN THE CORNER AS PREVIOUSLY RESTORED OR REESTABLISHED AND (1) THE CORNER AS RESTORED OR REESTABLISHED, AND (2) TO AT LEAST 2 OF THE WITNESS MONUMENTS SHOWN ON THE DRAWING IN (D) ABOVE.

N/A

(F) WAS THE CORNER RESTORED THROUGH ACCEPTANCE OF (1) AN OBLITERATED EVIDENCE LOCATION, OR (2) A FOUND PERPETUATED LOCATION?

(2) A FOUND PERPETUATED LOCATION.

(G&H) WAS THE CORNER REESTABLISHED THROUGH LOST CORNER PROPORTIONATE METHODS? IF SO, SHOW THE METHOD, INCLUDING THE DIRECTIONS AND DISTANCES TO OTHER PUBLIC LAND SURVEY CORNERS USED AS EVIDENCE OR USED FOR PROPORTIONING IN DETERMINING THE CORNER LOCATION.

N/A


CORNER HISTORY

THE ORIGINAL GOVERNMENT CORNER WAS ESTABLISHED BY ROBERT CLARK JR. IN THE FIRST QUARTER OF 1833.

IN A SURVEY DATED 15 JUNE 1843 FREEMAN WAS AT THIS CORNER.

IN A SURVEY DATED 4 APRIL 1906 A.W. APPLEBY SET A STONE IN CENTER OF HIGHWAY.

(I) I, JAY P. ADAMS, P.L.S. - 2879, CERTIFY THAT THE CORNER LOCATION SHOWN ON THIS RECORD WAS DETERMINED BY ME OR UNDER MY DIRECTION AND CONTROL AND THAT THIS U.S. PUBLIC LAND SURVEY MONUMENT RECORD IS CORRECT AND COMPLETE TO THE BEST OF MY KNOWLEDGE AND BELIEF.

  
SIGNATURE

1 MARCH 2018

DATE

AFFIX LAND SURVEYOR SEAL

