

## GRANT COUNTY U.S. PUBLIC LAND SURVEY MONUMENT RECORD

INSTRUCTIONS: THIS RECORD SHALL SHOW THE LOCATION OF THE CORNER AND SHALL INCLUDE ALL OF THE FOLLOWING ELEMENTS (A THROUGH I).

- (A) IDENTIFY THE CORNER AS REFERENCED TO THE U.S. PUBLIC LAND SURVEY SYSTEM

■ = CORNER MONUMENT RESTORED

WITNESSES TO CORNER LOCATION:

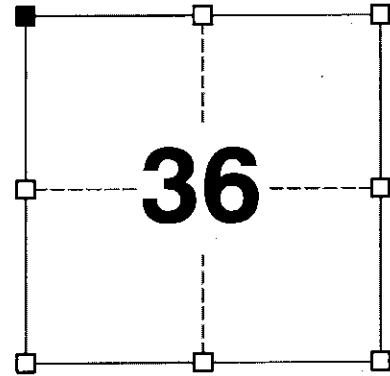
JAY P. ADAMS  
STEVEN A. ALT

GEOGRAPHIC COORDINATES,  
NAD 83 (2011) ADJUSTMENT:

LATITUDE: 42° 47' 03.44157"  
LONGITUDE: 90° 40' 57.41197"

WISCONSIN COORDINATE REFERENCE SYSTEM (WISCRS),  
GRANT COUNTY, NAD 83 (2011) ADJUSTMENT:

NORTHING: 500,451.92  
EASTING: 826,513.99



SECTION 36  
TOWNSHIP 4 NORTH, RANGE 3 WEST  
TOWN OF SOUTH LANCASTER

- (B) DESCRIBE ANY RECORD EVIDENCE, MONUMENT EVIDENCE, OCCUPATIONAL EVIDENCE, TESTIMONIAL EVIDENCE OR ANY OTHER MATERIAL EVIDENCE YOU CONSIDERED, AND WHETHER THE MONUMENT WAS FOUND OR PLACED.

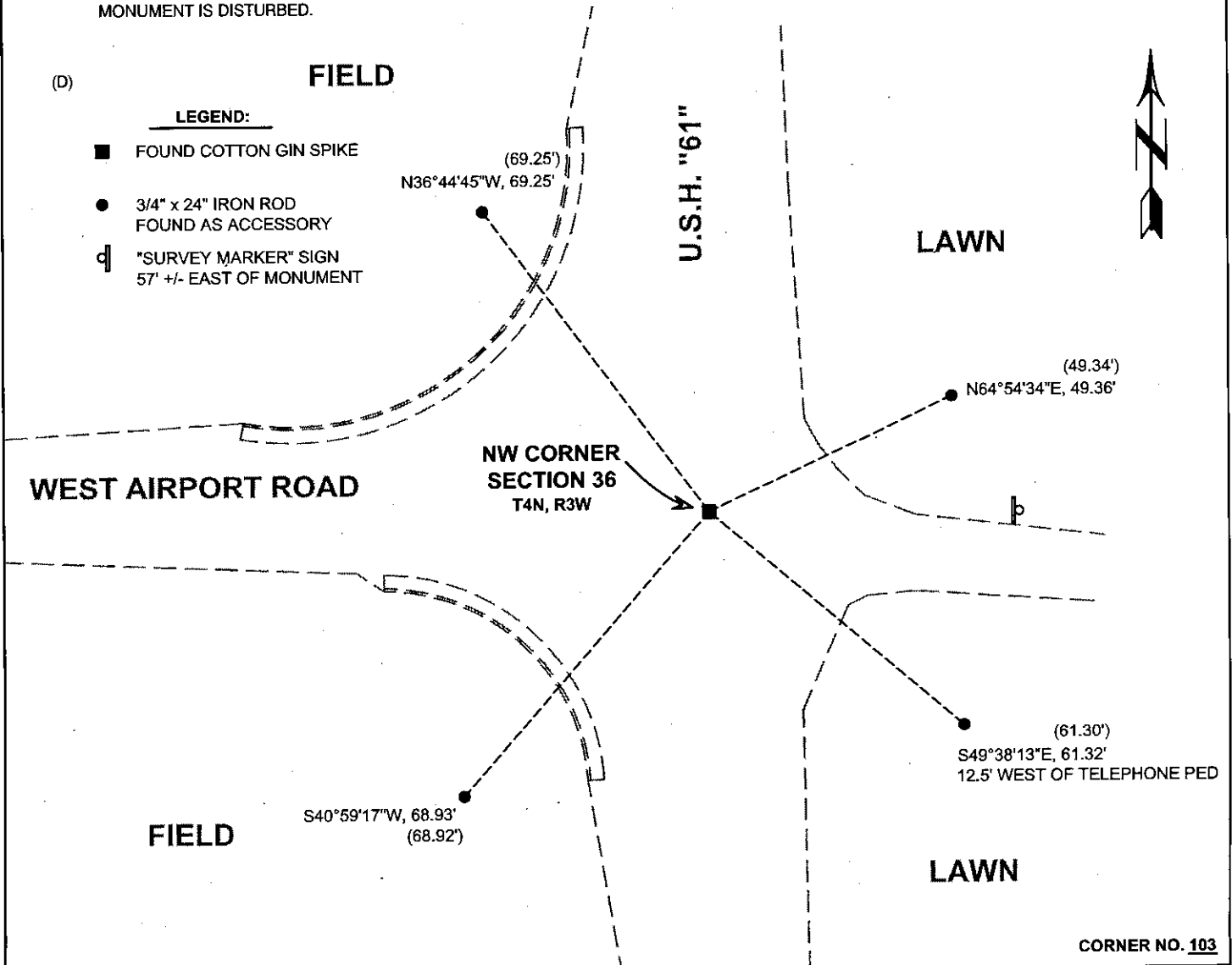
I COULD FIND NO MONUMENT OR BEARING TREES FROM THE ORIGINAL GOVERNMENT SURVEY OR THE HISTORIC COUNTY SURVEYOR'S SUBSEQUENT RESURVEYS. I RECOVERED COTTON GIN SPIKE SET BY JOHN KREBS, ACCEPTED THIS LOCATION FOR THE CORNER AND LEFT THE SPIKE IN PLACE.

- (C) IN THE PLAN VIEW DRAWING BELOW, PROVIDE REFERENCE TIES TO AT LEAST 4 WITNESS MONUMENTS. WITNESS MONUMENTS SHALL BE MADE OF CONCRETE, NATURAL STONE, IRON, BEARING TREES OR ANY OTHER EQUALLY DURABLE MATERIAL. DEPICT THE RELEVANT MONUMENTS AND REFERENCE TIES WITH SUFFICIENT DETAIL TO ENABLE ACCURATE RELOCATION OF THE CORNER IF THE CORNER MONUMENT IS DISTURBED.

- (D)

**LEGEND:**

- FOUND COTTON GIN SPIKE
- 3/4" x 24" IRON ROD FOUND AS ACCESSORY
- ⊓ "SURVEY MARKER" SIGN 57' +/- EAST OF MONUMENT



# Remonumentation

(E) DESCRIBE ANY MATERIAL DISCREPANCY BETWEEN THE LOCATION OF THE CORNER AS RESTORED OR REESTABLISHED AND THE LOCATION OF THAT CORNER AS PREVIOUSLY RESTORED OR REESTABLISHED BY DISTANCE AND DIRECTION. SHOW THE DISCREPANCY ON THE PLAN VIEW DRAWING UNDER (D), ABOVE. SHOW THE DISTANCES BETWEEN THE CORNER AS PREVIOUSLY RESTORED OR REESTABLISHED AND (1) THE CORNER AS RESTORED OR REESTABLISHED, AND (2) TO AT LEAST 2 OF THE WITNESS MONUMENTS SHOWN ON THE DRAWING IN (D) ABOVE.

N/A

(F) WAS THE CORNER RESTORED THROUGH ACCEPTANCE OF (1) AN OBLITERATED EVIDENCE LOCATION, OR (2) A FOUND PERPETUATED LOCATION?

(2) A FOUND PERPETUATED LOCATION.

(G&H) WAS THE CORNER REESTABLISHED THROUGH LOST CORNER PROPORTIONATE METHODS? IF SO, SHOW THE METHOD, INCLUDING THE DIRECTIONS AND DISTANCES TO OTHER PUBLIC LAND SURVEY CORNERS USED AS EVIDENCE OR USED FOR PROPORTIONING IN DETERMINING THE CORNER LOCATION.

N/A

## CORNER HISTORY

THE ORIGINAL GOVERNMENT CORNER WAS ESTABLISHED BY ROBERT CLARK JR IN THE FIRST QUARTER OF 1833.

IN A SURVEY DATED FEBRUARY 1844, WILTSE WAS AT THE CORNER.

IN A SURVEY DATED OCTOBER 1849, GEO STUNTZ NOTED POST IN ROAD.

IN A SURVEY DATED 24 AUGUST 1963, HOMER RALPH NOTES A DISTANCE TO CORNER.

IN A SURVEY DATED JUNE 1966 HOMER RALPH NOTES A DISTANCE TO CORNER.

IN A PLAT OF SURVEY DATED 12 MAY 1986 AND TIE SHEET DATED 3 SEPTEMBER 1986, BRUCE BOWDEN SET A 1/2" SPIKE.

IN A PLAT OF SURVEY DATED 12 MARCH 1996, DAVID BURBACH FOUND A COTTON GIN SPIKE.

IN A PLAT OF SURVEY DATED 17 MARCH 1997, LARRY AUSTIN FOUND A RAILROAD SPIKE.

IN A PLAT OF SURVEY DATED 13 OCTOBER 2008, LARRY AUSTIN FOUND 1/2" SQUARE SPIKE.

IN AN ALTA SURVEY DATED 14 MARCH 2012, JIMMY ROSE REPORTS COTTON GIN SPIKE TO BE SET BY OTHERS.

IN A TIE SHEET DATED 23 APRIL 2012, JOHN KREBS SET A COTTON GIN SPIKE BASED ON THE LOCATION REPORTED BY OTHERS INCLUDING THE RECOVERY OF THREE TIES FROM THE 1986 TIE SHEET BY BOWDEN.

IN AN ALTA SURVEY DATED 12 NOVEMBER 2012, JIMMY ROSE FOUND A COTTON GIN SPIKE.

IN A PLAT OF SURVEY DATED 12 FEBRUARY 2014, NATHAN WINCENTSEN FOUND A COTTON GIN SPIKE.

IN A PLAT OF SURVEY DATED 26 MARCH 2015, STANLEY KING FOUND A STAR NAIL.

AFFIX LAND SURVEYOR SEAL

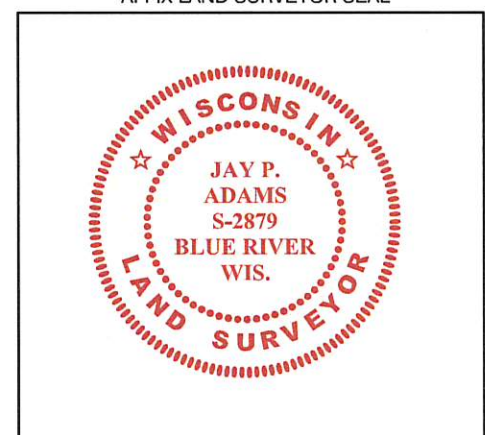
(I) I, JAY P. ADAMS, P.L.S. - 2879, CERTIFY THAT THE CORNER LOCATION SHOWN ON THIS RECORD WAS DETERMINED BY ME OR UNDER MY DIRECTION AND CONTROL AND THAT THIS U.S. PUBLIC LAND SURVEY MONUMENT RECORD IS CORRECT AND COMPLETE TO THE BEST OF MY KNOWLEDGE AND BELIEF.



SIGNATURE

7 NOVEMBER 2018

DATE



# U.S. PUBLIC LAND SURVEY MONUMENT RECORD - GRANT COUNTY, WI

Section 36, Town 4 North, Range 3 West, Town of South Lancaster

(a)

NOTE: This form is intended and designed to fulfill all requirements of Wisconsin Administrative Code, Chapter A-E 7.08, U.S. Public Land Survey Monument Record (3) (a) (b) (c) (d) (e) (f) (g) (h) (i). "An additional sheet may be added if necessary to conform with said requirements."

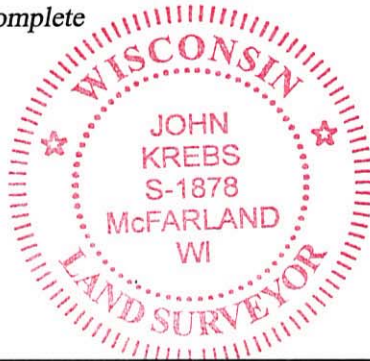
**CERTIFICATE:**

(i)

I, John Krebs, do hereby certify that the corner location on this record was determined by me and/or under my direct supervision and that this U.S. Public Land Survey Monument Record is correct and complete to the best of my knowledge and belief.

Dated this 4th day of April, 2012.

*John Krebs* 4-2312  
 John Krebs, S-1878



CORNER LOCATION

**HISTORY OF CORNER ESTABLISHMENT:**

Corner was set by Bruce D. Bowden, S-1250, on September 3, 1986.  
 Michael S. O'Keefe, S-2743, located corner on July 6, 2011, before road construction began.

**DESCRIPTION OF CORNER EVIDENCE FOUND:**

(b) (f) (g) (h)

Corner was removed during road construction. Replaced corner per location by Michael O'Keefe. I set a cotton pin at the Section corner and set four new ties as shown hereon. Found three ties from a tie sheet by Bruce D. Bowden, S-1250, dated September 3, 1986.

Witnesses to corner location \_\_\_\_\_

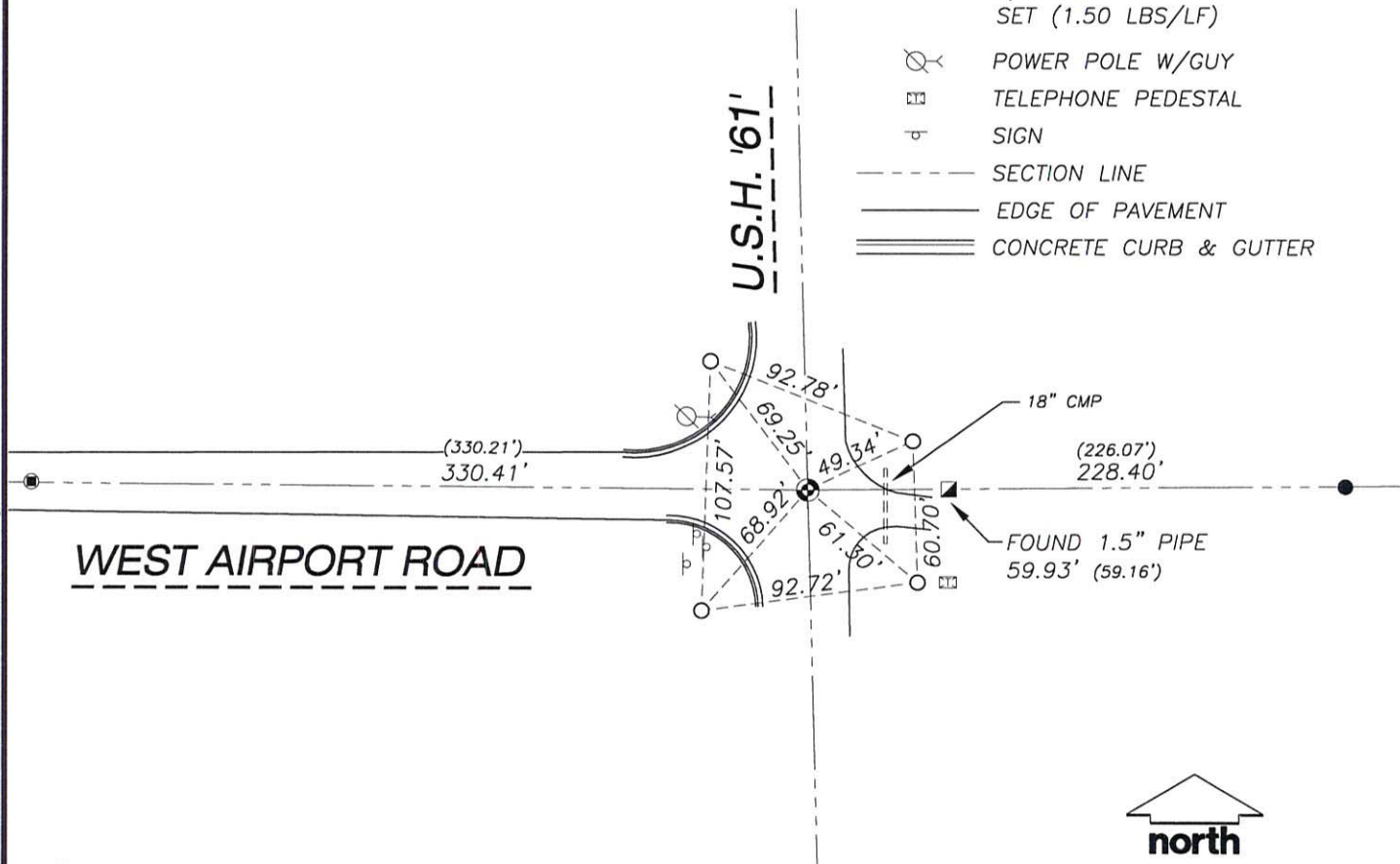
**DESCRIPTION OF CORNER AND WITNESS MONUMENTS: references and accessories used to perpetuate the original or re-established location of this corner.**

(c) (d) (e)

**SKETCH:**

**LEGEND**

- GOVERNMENT CORNER
- 3/4" REBAR FOUND
- RAILROAD SPIKE FOUND
- 2" IRON PIPE FOUND
- 3/4" x 24" REBAR SET (1.50 LBS/LF)
- POWER POLE W/GUY
- TELEPHONE PEDESTAL
- SIGN
- SECTION LINE
- EDGE OF PAVEMENT
- CONCRETE CURB & GUTTER



J:\2011\114660\dwg\11-4660 WisDOT Dickeyville.dwg

**JSD Professional Services, Inc.**  
 • Engineers • Surveyors • Planners  
 161 HORIZON DRIVE, SUITE 101  
 VERONA, WISCONSIN 53593  
 PHONE: (608)-848-5060

RELATIVE

SEP 8 1985

# U. S. PUBLIC LAND SURVEY MONUMENT RECORD

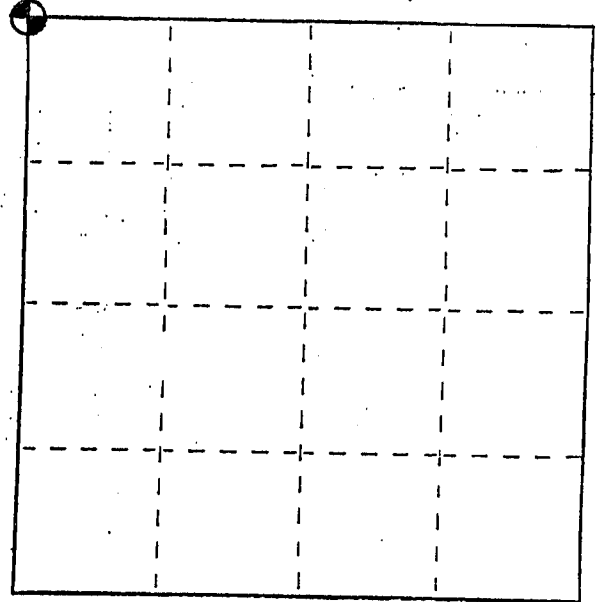
### INSTRUCTIONS :

This record shall show the location of the corner and shall include all of the following nine elements (a through i).

(a) Identify the corner by reference to the U.S. public land survey system.

⊙ = Corner monument restored.

Northwest corner of Section 36,  
Town 5 North, Range 3 West,  
South Lancaster Township,  
Grant County, Wisconsin.

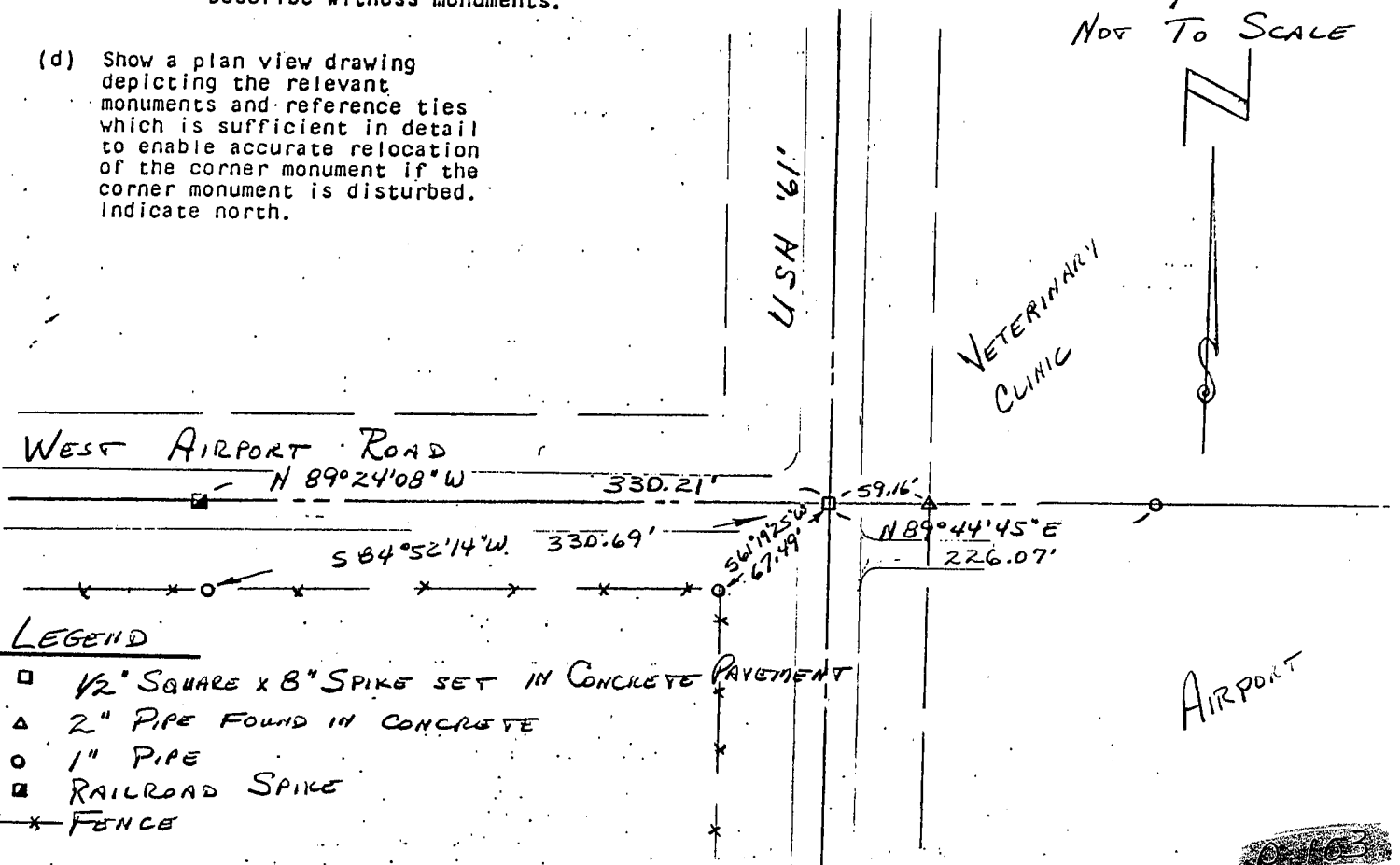


(b) Describe any record evidence, monument evidence, occupational evidence, testimonial evidence or any other material evidence you considered, and whether the monument was found or placed.

Monument set from ties as established on the 1939 Highway plans and verified with ties to property descriptions in the NW $\frac{1}{4}$  of Section 36 and also from proportionate measurements from an EDM traverse of the area.

(c) In the plan view drawing below, provide reference ties to at least 4 witness monuments, or, if the location is within a municipality, to at least 2 witness monuments. (Witness monuments shall be made of concrete, natural stone, iron or other equally durable material.) Describe witness monuments.

(d) Show a plan view drawing depicting the relevant monuments and reference ties which is sufficient in detail to enable accurate relocation of the corner monument if the corner monument is disturbed. Indicate north.



103

(e) Describe any material discrepancy between the location of the corner as restored or reestablished and the location of that corner as previously restored or reestablished by distance and direction. Show the discrepancy on the plan view drawing under (d) above. Show the distances between the corner as previously restored or reestablished and (1) the corner as restored or reestablished, and (2) to at least 2 of the witness monuments shown on the drawing in (d), above.

None

(f) Was the corner restored through acceptance of (1) an obliterated evidence location, or, (2) a found perpetuated location?

(1) an obliterated evidence location

(g&h) Was the corner reestablished through lost corner proportionate methods? If so, show the method, including the directions and distances to other public land survey corners used as evidence or used for proportioning in determining the corner location?

No

Bruce D. Bowden

(i) I, Bruce D. Bowden (type or print name) certify that the corner location shown on this record was determined by me or under my direction and control and that this U.S. Public Land Survey Monument Record is correct and complete to the best of my knowledge and belief.

Bruce D. Bowden  
Signature

Sept 3, 1986  
Date

