

## GRANT COUNTY U.S. PUBLIC LAND SURVEY MONUMENT RECORD

INSTRUCTIONS: THIS RECORD SHALL SHOW THE LOCATION OF THE CORNER AND SHALL INCLUDE ALL OF THE FOLLOWING ELEMENTS (A THROUGH I).

(A) IDENTIFY THE CORNER AS REFERENCED TO THE U.S. PUBLIC LAND SURVEY SYSTEM

■ = CORNER MONUMENT RESTORED

WITNESSES TO CORNER LOCATION:

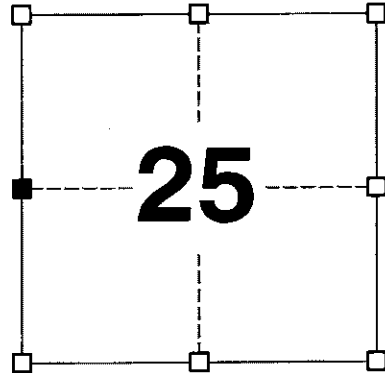
JAY P. ADAMS  
BRAD R. BOMKAMP

GEOGRAPHIC COORDINATES,  
NAD 83 (2011) ADJUSTMENT:

LATITUDE: 42° 47' 29.65506"  
LONGITUDE: 90° 40' 58.29170"

WISCONSIN COORDINATE REFERENCE SYSTEM (WISCRS),  
GRANT COUNTY, NAD 83 (2011) ADJUSTMENT:

NORTHING: 503,105.77  
EASTING: 826,444.70



SECTION 25  
TOWNSHIP 4 NORTH, RANGE 3 WEST  
TOWN OF SOUTH LANCASTER

(B) DESCRIBE ANY RECORD EVIDENCE, MONUMENT EVIDENCE, OCCUPATIONAL EVIDENCE, TESTIMONIAL EVIDENCE OR ANY OTHER MATERIAL EVIDENCE YOU CONSIDERED, AND WHETHER THE MONUMENT WAS FOUND OR PLACED.

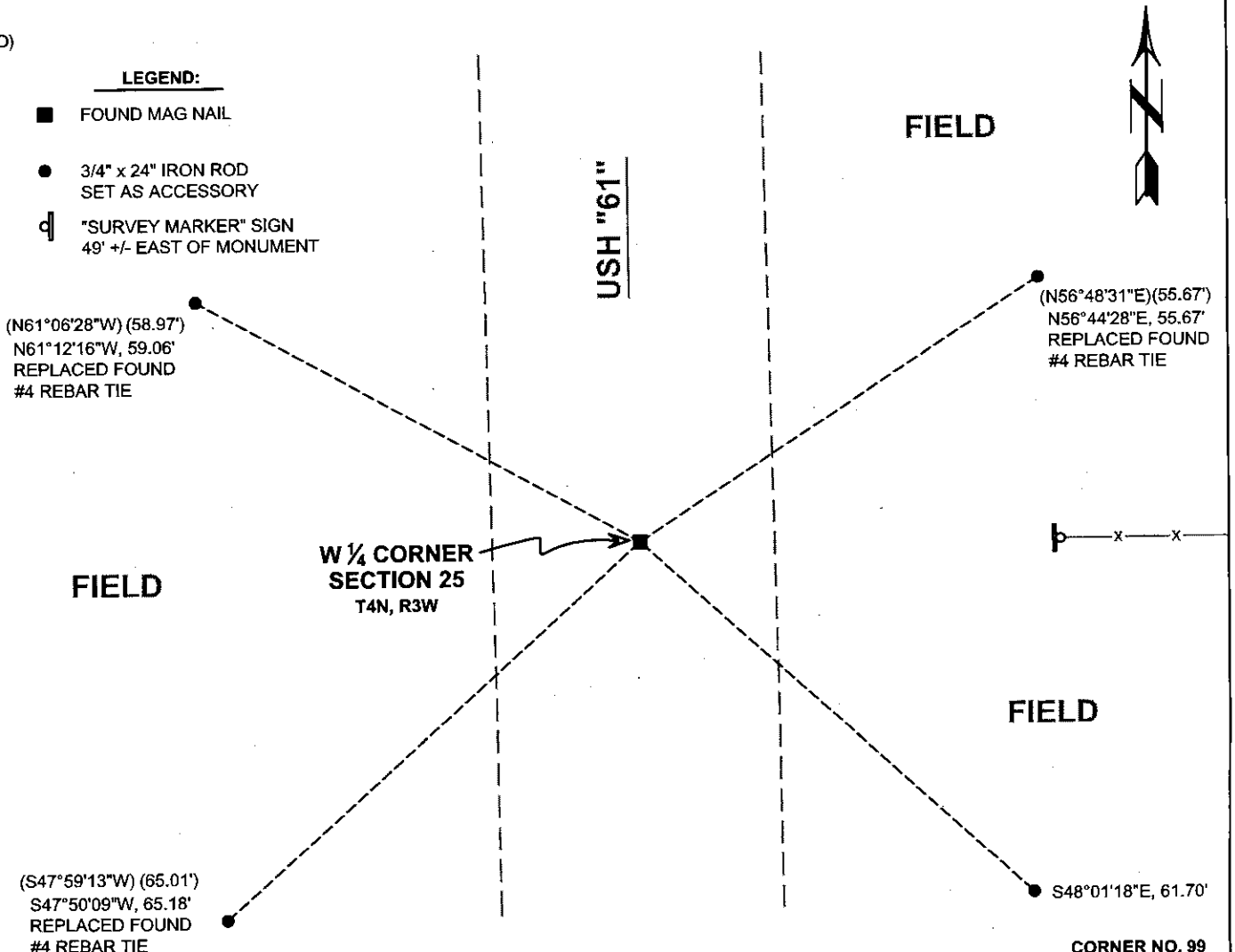
I COULD FIND NO MONUMENTS OR BEARING TREES FROM THE ORIGINAL GOVERNMENT SURVEY OR THE COUNTY SURVEYOR'S SUBSEQUENT RESURVEYS. I RECOVERED THE MAG NAIL REFERENCED BY AUSTIN AND ACCEPTED THIS LOCATION AS THE BEST AVAILABLE EVIDENCE OF THE CORNER AND ALLOWED IT TO REMAIN IN PLACE BECAUSE OF ITS STABILITY AND THE HIGH VOLUME OF TRAFFIC ON USH 61.

(C) IN THE PLAN VIEW DRAWING BELOW, PROVIDE REFERENCE TIES TO AT LEAST 4 WITNESS MONUMENTS. WITNESS MONUMENTS SHALL BE MADE OF CONCRETE, NATURAL STONE, IRON, BEARING TREES OR ANY OTHER EQUALLY DURABLE MATERIAL. DEPICT THE RELEVANT MONUMENTS AND REFERENCE TIES WITH SUFFICIENT DETAIL TO ENABLE ACCURATE RELOCATION OF THE CORNER IF THE CORNER MONUMENT IS DISTURBED.

(D)

**LEGEND:**

- FOUND MAG NAIL
- 3/4" x 24" IRON ROD SET AS ACCESSORY
- ⊓ "SURVEY MARKER" SIGN 49' +/- EAST OF MONUMENT



CORNER NO. 99

# Remonumentation

- (E) DESCRIBE ANY MATERIAL DISCREPANCY BETWEEN THE LOCATION OF THE CORNER AS RESTORED OR REESTABLISHED AND THE LOCATION OF THAT CORNER AS PREVIOUSLY RESTORED OR REESTABLISHED BY DISTANCE AND DIRECTION. SHOW THE DISCREPANCY ON THE PLAN VIEW DRAWING UNDER (D), ABOVE. SHOW THE DISTANCES BETWEEN THE CORNER AS PREVIOUSLY RESTORED OR REESTABLISHED AND (1) THE CORNER AS RESTORED OR REESTABLISHED, AND (2) TO AT LEAST 2 OF THE WITNESS MONUMENTS SHOWN ON THE DRAWING IN (D) ABOVE.

N/A

- (F) WAS THE CORNER RESTORED THROUGH ACCEPTANCE OF (1) AN OBLITERATED EVIDENCE LOCATION, OR (2) A FOUND PERPETUATED LOCATION?

(2) A FOUND PERPETUATED LOCATION.

- (G&H) WAS THE CORNER REESTABLISHED THROUGH LOST CORNER PROPORTIONATE METHODS? IF SO, SHOW THE METHOD, INCLUDING THE DIRECTIONS AND DISTANCES TO OTHER PUBLIC LAND SURVEY CORNERS USED AS EVIDENCE OR USED FOR PROPORTIONING IN DETERMINING THE CORNER LOCATION.

N/A

#### CORNER HISTORY

THE ORIGINAL GOVERNMENT CORNER WAS ESTABLISHED BY ROBERT CLARK JR. IN THE FIRST QUARTER OF 1833.

IN A SURVEY DATED FEBRUARY 1844 WILTSE WAS AT THE CORNER.

IN A SURVEY DATED OCT 1849 GEO STUNTZ SET A STONE IN THE ROAD.

IN A SURVEY DATED 22 JUNE 1857 HAYDEN WAS AT THE CORNER.

IN A PLAT OF SURVEY DATED 12 MARCH 1996, DAVID BURBACH SET A PK NAIL IN THE ROAD.

IN A PLAT OF SURVEY DATED 14 MARCH 2012, JIMMY ROSE NOTES COTTON GIN SPIKE TO BE SET.

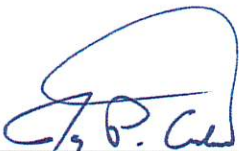
IN AN ALTA SURVEY DATED 12 NOVEMBER 2012, JIMMY ROSE FOUND A PK NAIL IN ROAD.

IN A TIE SHEET DATED 15 AUGUST 2013, AARON AUSTIN SETS A MAG NAIL.

IN AN EASEMENT SURVEY DATED 12 FEBRUARY 2014, NATHAN WINCENTSEN FINDS A MAG NAIL.

IN A PLAT OF SURVEY DATED 26 MARCH 2015, STANLEY KING FOUND A PK NAIL.

- (I) I, JAY P. ADAMS, P.L.S. - 2879, CERTIFY THAT THE CORNER LOCATION SHOWN ON THIS RECORD WAS DETERMINED BY ME OR UNDER MY DIRECTION AND CONTROL AND THAT THIS U.S. PUBLIC LAND SURVEY MONUMENT RECORD IS CORRECT AND COMPLETE TO THE BEST OF MY KNOWLEDGE AND BELIEF.

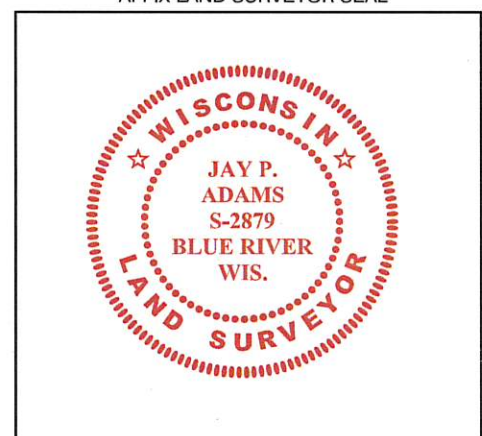


SIGNATURE

8 NOVEMBER 2018

DATE

AFFIX LAND SURVEYOR SEAL



# U.S. PUBLIC LAND SURVEY MONUMENT RECORD - GRANT COUNTY, WI

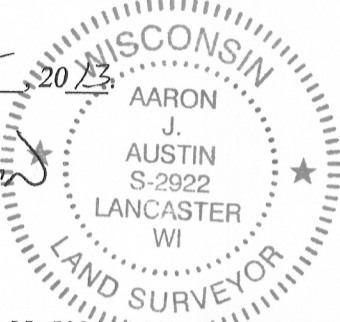
Section 25, Town 4 North Range 3 West, Town of South Lancaster

**CERTIFICATE:**

I, Aaron J. Austin, do hereby certify that the corner location on this record was determined by me and/or under my direct supervision and that this U.S. Public Land Survey Monument Record is correct and complete to the best of my knowledge and belief.

Dated this 15 th day of AUGUST 2013.

*Aaron J. Austin*  
Aaron J. Austin, S-2922



● = CORNER LOCATION

GRANT COUNTY COORDINATES: N=5031051.79' E=826444.56'

**HISTORY OF CORNER ESTABLISHMENT:**

- 1833-Robert Clark set original corner.
- 1844-Wiltse tied to the corner on a Survey filed in Book A, Page 175.
- 1858-Hayden tied to the corner on a Survey filed in Book C, Page 183.
- 1849-Stuntz set a Stone on a Survey filed in Book G, Page 183.
- 1996-Burbach set a P.K. Nail on a Survey filed in Book Y, Page 19.

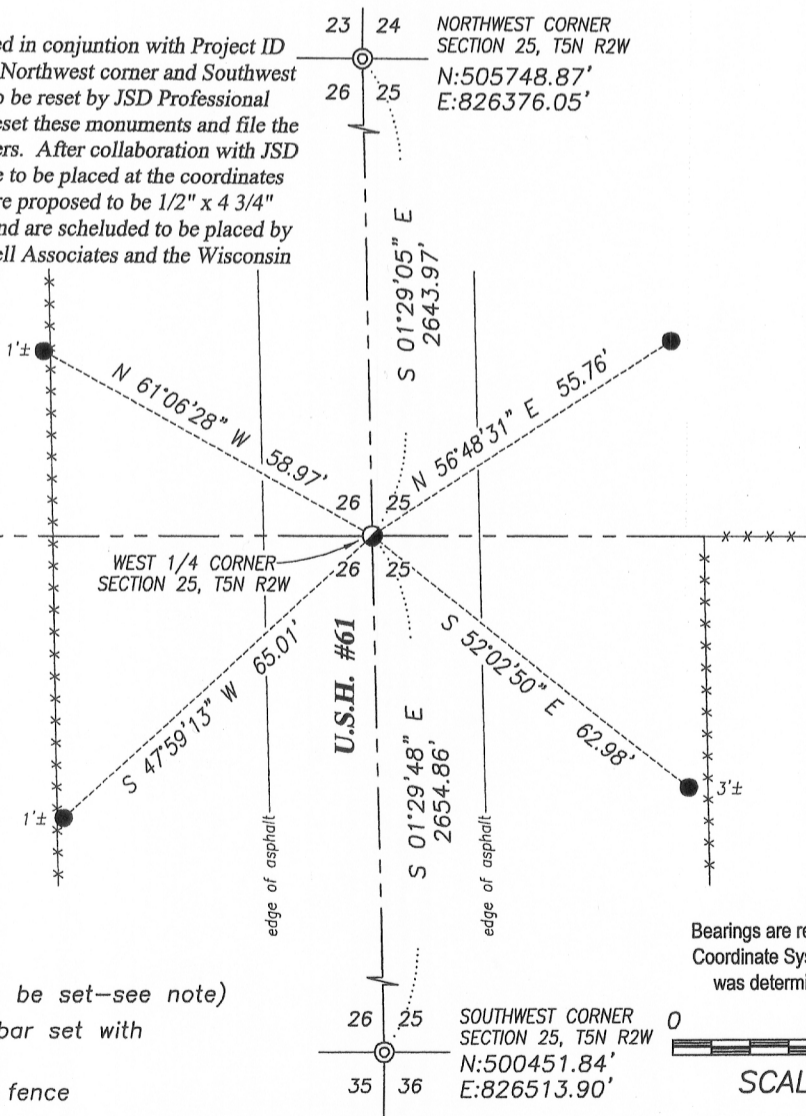
**DESCRIPTION OF CORNER EVIDENCE FOUND:**

P.K. Nail set by Burbach was unable to be recovered due to resurfacing of Highway #61. On Burbach's survey, this corner was dimensioned online and equidistant between the Northwest corner and Southwest corner of Section 25. I did not accept the location established by Burbach. I reset a Mag Nail at the occupied fence East and centerline of Highway #61. I verified this location with G.P.S. methods.

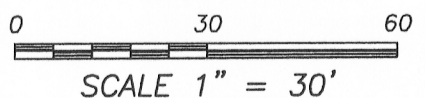
**DESCRIPTION OF CORNER AND WITNESS MONUMENTS, references and accessories used to perpetuate the original or re-established location of this corner. Witnesses to corner location Bobby Sedgwick and Shelby Blindert.**

**SKETCH:**

**NOTE:**  
Highway #61 was recently resurfaced in conjunction with Project ID 1650-06-71. Under this project, the Northwest corner and Southwest corner of Section 25 were lost and to be reset by JSD Professional Services, Inc are under contract to reset these monuments and file the appropriate tie sheets for these corners. After collaboration with JSD on this project, those monuments are to be placed at the coordinates shown hereon. These monuments are proposed to be 1/2" x 4 3/4" Steel Cotton Gin Spikes (per JSD) and are scheduled to be placed by April 1st, 2012 as requested by Jewell Associates and the Wisconsin Department of Transportation.

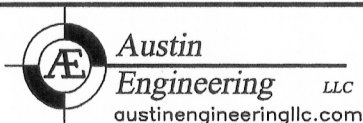


Bearings are referenced to the Grant County Coordinate System (2007 adjustment) which was determined by G.P.S. observation.



**LEGEND**

- Mag Nail Set
- ⊙ Cotton Gin Spike (to be set—see note)
- Number 4 x 24" Rebar set with red plastic "TIE" cap
- \*-\*- Approximate existing fence



4211 HWY 81 E, LANCASTER, WI 53813  
PHONE: 608-723-6363 FAX: 608-723-6702

JOB NO: 11s192  
G:\GRANTDOT\HWY61B  
H:\TIE\T4NR3W\99

FIELDBOOK: TDSR  
DRAWN BY: AJ AUSTIN  
CREW: BS-SB