

(E) DESCRIBE ANY MATERIAL DISCREPANCY BETWEEN THE LOCATION OF THE CORNER AS RESTORED OR REESTABLISHED AND THE LOCATION OF THAT CORNER AS PREVIOUSLY RESTORED OR REESTABLISHED BY DISTANCE AND DIRECTION. SHOW THE DISCREPANCY ON THE PLAN VIEW DRAWING UNDER (D), ABOVE. SHOW THE DISTANCES BETWEEN THE CORNER AS PREVIOUSLY RESTORED OR REESTABLISHED AND (1) THE CORNER AS RESTORED OR REESTABLISHED, AND (2) TO AT LEAST 2 OF THE WITNESS MONUMENTS SHOWN ON THE DRAWING IN (D) ABOVE.

N/A

(F) WAS THE CORNER RESTORED THROUGH ACCEPTANCE OF (1) AN OBLITERATED EVIDENCE LOCATION, OR (2) A FOUND PERPETUATED LOCATION?

(2) A FOUND PERPETUATED LOCATION.

(G&H) WAS THE CORNER REESTABLISHED THROUGH LOST CORNER PROPORTIONATE METHODS? IF SO, SHOW THE METHOD, INCLUDING THE DIRECTIONS AND DISTANCES TO OTHER PUBLIC LAND SURVEY CORNERS USED AS EVIDENCE OR USED FOR PROPORTIONING IN DETERMINING THE CORNER LOCATION.

N/A

CORNER HISTORY

THIS CORNER WAS NOT ESTABLISHED BY THE ORIGINAL GOVERNMENT SURVEY.

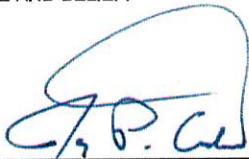
IN A SURVEY DATED MARCH 1841, FREEMAN WAS AT THE CORNER.

IN A TIE SHEET DATED 5 JUNE 2012, AARON AUSTIN SET A #8 x 30" IRON ROD WITH A GRANT COUNTY ALUMINUM CAP AT THE CORNER AT A LOCATION OF OCCUPATION.

AUSTIN HAS USED THIS CORNER IN TWO PLATS OF SURVEY.

AFFIX LAND SURVEYOR SEAL

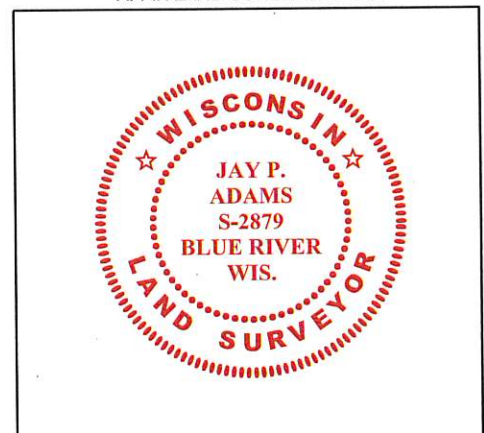
(I) I, JAY P. ADAMS, P.L.S. - 2879, CERTIFY THAT THE CORNER LOCATION SHOWN ON THIS RECORD WAS DETERMINED BY ME OR UNDER MY DIRECTION AND CONTROL AND THAT THIS U.S. PUBLIC LAND SURVEY MONUMENT RECORD IS CORRECT AND COMPLETE TO THE BEST OF MY KNOWLEDGE AND BELIEF.



26 MAY 2018

SIGNATURE

DATE



U.S. PUBLIC LAND SURVEY MONUMENT RECORD - GRANT COUNTY, WI

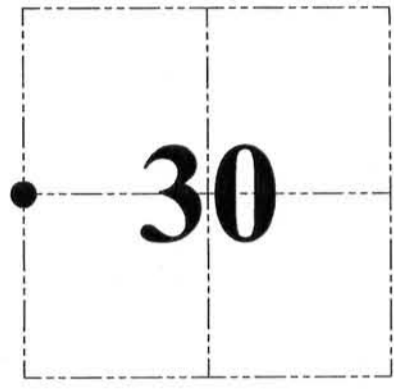
Section 30, Town 4 North Range 3 West, Town of South Lancaster

CERTIFICATE:

I, Aaron J. Austin, do hereby certify that the corner location on this record was determined by me and/or under my direct supervision and that this U.S. Public Land Survey Monument Record is correct and complete to the best of my knowledge and belief.

Dated this 5th day of June, 2012.

Aaron J. Austin
 Aaron J. Austin, S-2922



● = CORNER LOCATION

HISTORY OF CORNER ESTABLISHMENT:

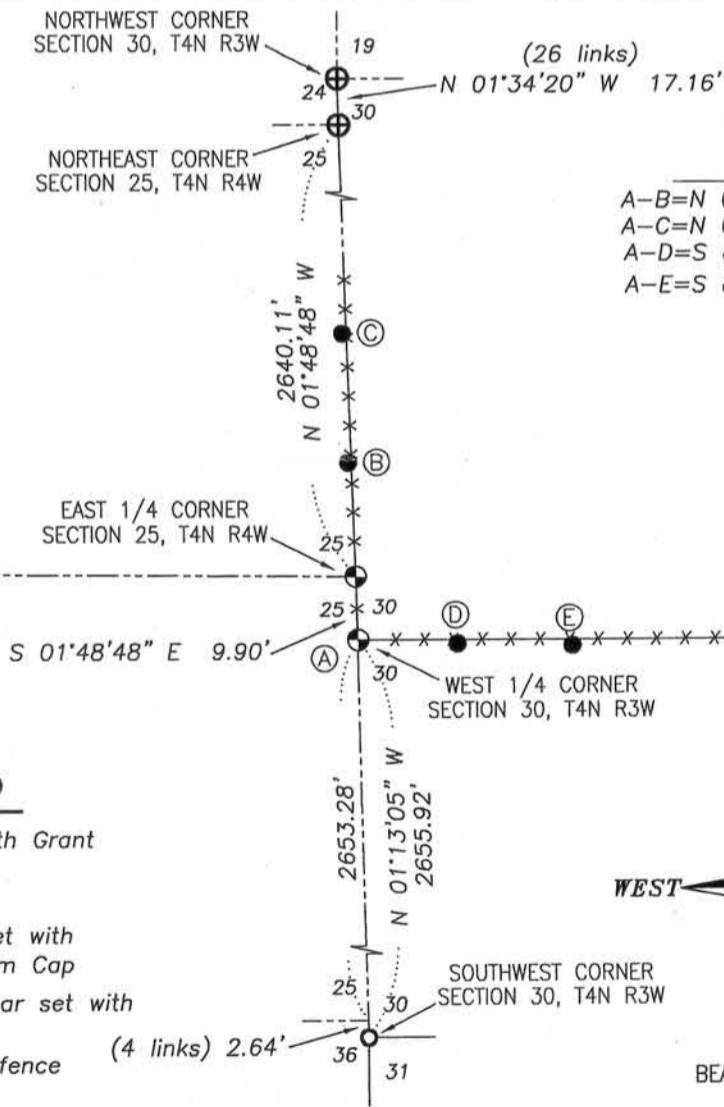
Corner was not set with original survey. A survey by Freeman in 1847, filed in Book A, Page 65, Grant County Surveys filed in the Grant County Tax Lister's Office established this corner. No other record was found for this corner.

DESCRIPTION OF CORNER EVIDENCE FOUND:

I found and accepted an existing fence corner at this location.
 I verified this location by E.D.M. and G.P.S. methods.

DESCRIPTION OF CORNER AND WITNESS MONUMENTS, references and accessories used to perpetuate the original or re-established location of this corner. Witnesses to corner location Bobby Sedgwick & Shelby Blindert

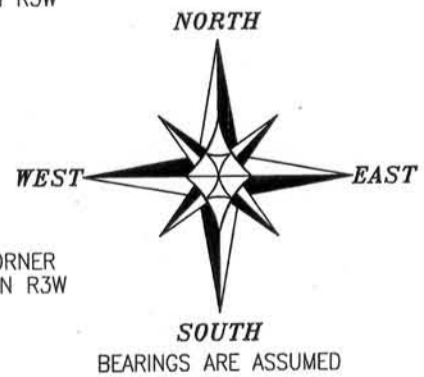
SKETCH:



TABULATION	
A-B=N	02°47'37" W 27.62'
A-C=N	02°34'38" W 47.70'
A-D=S	87°45'54" E 15.65'
A-E=S	88°25'42" E 33.55'

LEGEND

- ⊕ No. 8 rebar found with Grant County Aluminum Cap
- No. 6 rebar found
- ⊗ No. 8 x 30" rebar set with Grant County Aluminum Cap
- Number 4 x 24" Rebar set with red plastic "TIE" cap
- x-x- Approximate existing fence



SKETCH NOT TO SCALE



4211 HWY 81 E, LANCASTER, WI 53813
 PHONE: 608-723-6363 FAX: 608-723-6702

JOB NO: 12s069
 G:\T4NR4W\22
 H:\TIE\T4NR4W\100

FIELDBOOK: TDSR
 DRAWN BY: AJ AUSTIN
 CREW: BS-SB